

Knowledge Foundations

Inside This Issue

- 01 [UCEM News](#)
- 02 [Other News](#)
- 03 [Property & Construction Statistics](#)
- 04 [Built Environment Research](#)
- 05 [e-Journal Review](#)
- 06 [e-Book Review](#)
- 07 [UCEM e-Library](#)
- 08 [Student Career Service](#)
- 09 [UCEM's Sustainability Hub](#)
- 10 [Information Governance](#)

[A to Z of useful references and web-links](#)

What's in this month's issue

- **Latest UCEM News**, incl. - Students celebrate alongside UCEM at jovial 2025 Winter graduation ceremony. Also, UCEM awarded research funding by the British Council for EcoBrazil workshop.
- **Things you need to know this week** – Plans to unlock Oxford-Cambridge growth corridor and drive delivery of homes and other infrastructure are outlined by chancellor Rachel Reeves.
- **Latest Research** from Savills, RICS, CIOB, CBRE, JRF, The Smith Institute, and more.

Happy reading!

Issue 3 – March 2025

Welcome to UCEM's monthly *Knowledge Foundations* newsletter (formally the library e-bulletin), a compendium of news and views, research and resources relating to the educational sector and Built Environment.

The UCEM Library aims to disseminate information, promote current awareness, and share good practices, to assist in the continual professional development of all those working and aspiring to work within the Built Environment/Property and Construction industries.

"The mission of librarians is to improve society through facilitating knowledge creation in their communities."

(R. David Lankes)

The initial aim of this UCEM Library's current awareness service was to help keep students and staff informed of the education sector and industry-specific news, share current and best practices, highlight the latest research, and identify case studies that will support studying and supplement teaching and learning resources. However, over the years and upon request, the readership has now expanded.

We welcome news and information from readers to include in future editions - please [email us](#).

Supported Online Learning

The readership of *Knowledge Foundations* has expanded (to include Alumni) and is now promoted further afield, with the latest version appearing on the UCEM Website.

[UCEM Website > Online Learning > e-Library](#)

[Visit Supported Online Learning](#)

[Back to top](#)

UCEM News

LATEST UCEM News

Students celebrate alongside UCEM at jovial 2025 Winter graduation ceremony

On Thursday 30 and Friday 31 January, UCEM graduates from both the UK and around the world celebrated their academic achievements at Reading Town Hall.

Graduation is the most important day on the UCEM calendar, and this Winter ceremony was no exception. Three ceremonies were held across two days, as graduates and their friends and families were joined by UCEM staff, academics and trustees to celebrate their collective accomplishments.

Access further information and the article, ['Students celebrate alongside UCEM at jovial 2025 Winter graduation ceremony'](#) in full.

Also:

Other UCEM News



© UCEM 2021

LATEST UCEM Research News

UCEM awarded research funding by the British Council for EcoBrazil workshop

In November of 2024, UCEM was awarded £53,200 by the British Council under the International Science Partnerships Fund for an EcoBrazil workshop.

This hybrid workshop, titled: **'Adapting Ecosystems: Bridging Biodiversity and Climate Resilience in Brazilian Landscapes through capacity building, knowledge exchange and simulation modelling; EcoBrazil'**, aim to gather 20 UK and 20 Brazilian participants from a diverse range of areas.

Access further information and the article, ['UCEM awarded research funding by the British Council for EcoBrazil workshop'](#) in full.

[Back to top](#)

UCEM research recognised at prestigious academic conferences

Several of UCEM's academics have been involved in and recognised at two academic conferences recently. In August 2024, Dr James Ritson and Dr Graeme Larsen both presented research at the 10th annual Sustainable Ecological Engineering Design for Society (SEEDS) conference. Dr Ritson presented exciting research building upon his Harold Samuel Research Prize (HSRP) around Sustainability Implications of Hybrid Working, whilst Dr Larsen presented research conducted by himself and Dr Pippa Boyd on Sustainability Being Enacted by SMEs Across Rural Localised Settings. Dr Boyd and Dr Larsen's paper won a category award at the event, being 'highly commended.'

Access further information and the article, ['UCEM research recognised at prestigious academic conferences'](#) in full.

Also:

- ['UCEM hosts Research & Scholarship Engagement Day'](#)
- ['UCEM awarded research funding from the Royal Academy of Engineering'](#)
- ['UCEM awarded two research grants to explore gender equality challenges in 2024'](#)

Other UCEM News

UCEM enters partnership with the Association of Higher Education Professionals

An Institutional Partnership with the Association of Higher Education Professionals (AHEP) is designed to enhance professional development and support for higher education institutions.

Following recent announcements about a partnership with the University of Manchester, AHEP are pleased to announce its newest Institutional Partnership with the UCEM.

Access further information and the article, ['UCEM enters partnership with the Association of Higher Education Professionals'](#) in full.

UCEM Vice Chancellor joins experts to address HE sector's financial challenges

- UCEM Vice Chancellor Ashley Wheaton took part in a panel discussion at the Westminster Higher Education Forum's recent virtual conference, addressing UK University Financial Sustainability.

Access further information and the article, ['UCEM Vice Chancellor joins experts to address HE sector's financial challenges'](#) in full.

[Back to top](#)

LATEST UCEM Sustainability News

UCEM achieves fourth consecutive SOS-UK Responsible Futures accreditation

- UCEM has again been re-accredited with the [Students Organising for Sustainability UK \(SOS-UK\) Responsible Futures](#) certification, marking its fourth success.

Access further information and the article, '[UCEM achieves fourth consecutive SOS-UK Responsible Futures accreditation](#)' in full.

UCEM Student and Vice Chancellor contribute to major UK sustainability summit

- UCEM is committed to driving sustainability and inclusivity in the built environment forward. [UCEM's Sustainability Strategy](#) underpins this commitment, providing a clear roadmap to embed sustainability into everything we do.

Access further information and the article, '[UCEM takes part in fourth sustainability accreditation audit](#)' in full.

UCEM takes part in fourth sustainability accreditation audit

The Responsible Futures accreditation aims to support institutions with embedding social responsibility and sustainability into their formal and informal curriculums. UCEM has held this accreditation [since 2018](#), and completed successive audits in [2020](#) and [2022](#).

Access further information and the article, '[UCEM takes part in fourth sustainability accreditation audit](#)' in full.

UCEM celebrates receiving ISO 14001 certification

The awarding of an ISO 14001 certification (an internationally recognised global standard) is just one part of our wider sustainability strategy and fits into the **How we operate** stated of the UCEM's ongoing [Globe initiative](#). It also addresses 13 of the [Sustainable Development Goals](#) set out by the United Nations. Rather than existing within a silo, this certification forms part of our vision to create a culture of sustainability within the organisation.

VISIT THE **GLOBE** WEBPAGE 

Access further information and the article, '[UCEM celebrates receiving ISO 14001 certification](#)' in full.

Also: Please visit the '[Sustainability Hub](#)' within *Knowledge Foundations* for further supporting information.

[Back to top](#)

Further UCEM articles:

[UCEM launches website to raise awareness of engineering in schools,](#)

[Activate Learning launches new online Access to HE diploma in Built Environments with guaranteed undergraduate progression,](#)

[UCEM INSPIRE event brings together sustainability leaders, and related articles –](#)

UCEM's 'INSPIRE' series,

“INSPIRE - so that we can together INfluence for Skills, Productivity, Industry, Research and Education”

- [Collaboration highlighted as key competency at fourth UCEM INSPIRE conference](#)
- [Foundations for success: UCEM convenes experts to improve built environment apprenticeships](#)

[UCEM launches 'Be part of the change' to challenge lack of representation in the built environment,](#)

[Tackling the Climate Crisis – deeper engagement from smaller and specialist universities highlighted in new report,](#)

[UCEM places 13th in list of best 50 training providers,](#)

[UCEM hosts hybrid workshop on gender equality in Jordan and Egypt,](#)

[UCEM joins campaign to drive better gender balance at board level,](#) and

- [Access more information on UCEM's diversity and inclusion objectives.](#)

Note: [Keep abreast of the latest UCEM News and events](#)

– Read our blog to keep updated on Building Environment industry insights, student case studies, and thoughts from UCEM Principal: Ashley Wheaton.

- [For more on UCEM's ambitions, take a look at the Institution's *Vision and Strategy* brochure](#)
- [Build a better future with UCEM videos](#)

Further information and the latest developments can also be found via the [UCEM Website](#), & don't forget that the UCEM [e-Library](#) can be accessed 24/7 (via the VLE-Virtual Learning Environment) with a wealth of valuable resources to help 😊. If you have any further questions, please contact:

- Student enquiries – Student Central on our VLE
- Employer enquiries – businessdevelopment@ucem.ac.uk
- Other enquiries – Email: reception@ucem.ac.uk, Tel: +44(0)118 467 2100

[Back to top](#)

Other News

Things you need to know this week: Reeves sets out plans to boost infrastructure

- Plans to unlock Oxford-Cambridge growth corridor and drive delivery of homes and other infrastructure outlined by chancellor Rachel Reeves in a bid to go “further and faster” to spur economic growth.

The government has given its backing to the development and expansion of neighbourhoods in the Oxford-Cambridge growth corridor and a new East Coast Mainline rail station, in its determination to boost economic growth. **In a speech** this week (see publication date), chancellor Rachel Reeves said the government would unlock investment for new and improved infrastructure in the region as part of a string of proposals intended to drive economic growth, including backing for a third runway at Heathrow Airport. The speech followed news that the government planned to promote housebuilding on land close to commuter transport hubs by introducing a set of “national policies for decisionmaking to guide planning decisions taken by local authorities”. The government said it is working with Greater Manchester to release land around transport hubs through local development orders, such as around Castleton Station, with its statement highlighting, “the potential for this innovative use of existing powers to kickstart building these sites to be a blueprint for the rest of the country”.

Also, this month –

- Government agency Homes England has sealed a deal with housebuilder Vistry that will see a former hospital site in Birmingham redeveloped with 750 homes.
- Malaysian-owned conglomerate YTL is to invest £4 billion over the next five years to deliver 6500 homes and a 19,500 capacity arena in Bristol.
- Greater Manchester Pension Fund (GMPF) has invested £100 million in an investment fund developed and managed by Legal and General (P&G) to deliver affordable homes across the north west of England.
- Homes England and finance lending platform Invest & Fund are expanding their Lending Alliance, which supports SME developers.
- Hospitals, prisons and other government buildings need at least £49 billion of maintenance work to bring their condition to a satisfactory level, **a report by spending watchdog the National Audit Office** (NAO) has found.
- The Crown Estate has appointed three development partners to

[Back to top](#)

deliver housing demonstration projects in Bedfordshire, Hertfordshire and Cheshire. GS8 will deliver 50 net zero carbon homes in Woot3en, Bedfordshire, deploying regenerative development principles, including de-constructable homes for future reuse. Town will oversee delivery of 80 homes in Hemel Hempstead, exploring innovative community engagement methods and alternative housing models, including collaborative housing and inter-generational living. Igloo Regeneration will lead the development of 60 homes in Knutsford, exploring low-carbon infrastructure delivery and adopting a community-first approach to design and construction.

[Read the article, Smit, J. \(2025\) 'Need to know: Reeves sets out plans to boost infrastructure delivery', 28 January, in full.](#)

(Please note that you will need to register to access these stories in full, although you can 'Register free for limited access.' Visit the [PlacemakingResource](#), scroll to the base of the homepage, and access route within 'Subscription and Registration').

Case Study: Creating and nurturing a new city quarter

- The development of Wellington Place in Leeds won't end with the completion of its buildings because for its developer and asset manager "placemaking is never truly finished", finds the author of this article.

Successful, sustainable regeneration of large-scale city sites takes time: that has been a lesson from many long-running projects in UK cities. The achievements at a Leeds city-centre site show that patience and the right approach pay off.

Over more than two decades, a low-grade retail part has been transformed into Wellington Place, a modern office location with more than a million square feet of high-spec office space in a series of buildings set around a new public square. In the square, a mid-nineteenth century wagon lifting tower that is all that remains from the site's railway station heritage has been restored and repurposed by the developer to create a museum that celebrates the site's history and local people's links to it.

The regeneration continues. MEPC, the developer and asset manager behind this new urban quarter, is not upgrading one of Wellington Place's earliest building future proof its space while bringing forward the scheme's final buildings.

And throughout the redevelopment process, the developer was worked to activate this new place and integrate it into the city. This is a key element of the developer's 'people-first' approach, which looks beyond the duration of construction programmes and the boundaries of the redevelopment site.

Challenges – The 21-acre site was part of Leeds Central Station

[Back to top](#)

until the 1960s, when it became a retail part housing traders in carpets, furniture and electrical goods. By the early 2000s the retail buildings were dated, footfall had fallen significantly and there were several vacant units.

1 and 2 Wellington Place, completed in 2000 and 2006, were forerunners of the broader redevelopment. The retail part's stores were eventually demolished in 2008 and the Wellington Place masterplan took shape and 10 Wellington Place because the first speculative office development in Leeds for over five years on its completion in 2013.

Inevitably given its scale, the development has had to weather economic ups and downs. "The journey from vision to delivery has faced a number of obstacles, including the economic downturn in 008/9 which delayed development of new offices," says Paul Pavia, head of development at MEPC. Rather than mothball the site, however, the developer initiated meanwhile projects and green space until the financial climate improved, providing the local community with football pitches, allotments, beehives and green seating areas, some of which have been retained.

The developer also had to tackle the restoration of the grade 2 listed lifting tower. The former wagon lifting hoist had been relatively untouched since it was taken out of service in the 1960s, when MEPC took over the management of Wellington Place.

Solution – The development now features more than 10 buildings and three more have yet to be constructed to bring it to completion. The development was worked to deliver high standards of sustainability across the estate, with its most recent building at 11 and 12 Wellington Place being the first outside London and the further in the UK to achieve a design reviewed target rating of five stars or above in the NABERS environmental rating scheme.

An early building, 2 Wellington Place is being upgraded to serve as "a first-class example of successful, sustainable refurbishment", says Pavia. Two further buildings – 9 and its surrounding public realm and 14 – are in the planning pipeline. That will leave just one more building to be brought forward, number 15.

Ongoing stewardship – Year-round events programmes and partnerships with local schools, charities and social enterprises all help to create that sense of community. "We know that to create a real sense of place, it's essential that an events programme is as varied and inclusive as possible," says Pavia. The events programme includes singing groups, fitness classes, pub quizzes, wellbeing workshops, book clubs and more. "We regularly listen to feedback from our community, to ensure we adapt and refine the programme, ensuring it remains relevant, engaging and welcoming for all," he adds.

Wellington Place is an ambassador of the Child Friendly Leeds scheme and hosts and supports free family friendly activities like

[Back to top](#)

a recent Monopoly Trail, which brought over half a million visitors to the city.

MEPC has gathered feedback on the value of its stewardship.

Read further information and the Case Study in full. Source: Smith, J (2025) 'Creating and nurturing a new city quarter'.

(Please note that you will need to register to access these stories in full, although you can 'Register free for limited access.' Visit the [PlacemakingResource](#), scroll to the base of the homepage, and access route within 'Subscription and Registration').

Advice: Planning for housing for older people

- Councils should develop effective policies in their local plans and identify sites for housing to meet the needs of the UK's ageing population, finds the author of this article.

The government's Older People's Housing Taskforce **published its report** in November 2024, calling for a major effort to get more housing built for the ageing population. The report said that "the government needs to construct older people's housing and later living homes at the rate of 50,000 new units a year compared with the 'meagre' 5-7000 currently being built". Demand is going to increase, according to the taskforce. The taskforce's report estimates that, "the number of households aged 65+ will grow by 37.3 per cent by 2040, so the supply of later living housing will need to be boosted by over a third just to maintain its current coverage." The government is committed to delivering 1.5 million additional homes over five years. "Local authorities and others need to ensure that a sizeable proportion of those homes is suitable for people as they age by developing strategies and allocating sites, says Paavan Popat, a member of the taskforce and chief executive of provider TLC Care.

Here are six key actions local authorities and other providers can take to promote the provision of housing for older people.

1. Understand the need for older people's housing - "Councils need to make a realistic estimate of the levels of need for housing for older people in their districts and allocate appropriate sites to meet the," says James Lloyd, director of policy at the body, Associated Retirement Community Operators (ARCO), which represents the integrated retirement community sector in the UK.

2. Develop an effective strategy to allocate sites as part of the local plan – A survey by law firm Irwin Mitchell and property consultancy Knight Frank suggested that around two thirds of local authorities have strategies in their local plans for the provision of housing for older people.

3. Allocate a realistic number of sites for older people's housing – Work for the taskforce demonstrates that the approval rate by local authorities for planning applications for older people's housing is lower than for other housing schemes.

[Back to top](#)

4. Locate sites in town centres – Older people can bring new life to town centres as they tend to use local facilities more. The communities can also bring new facilities to a town centre.

5. Make older people's housing part of a neighbourhood masterplan – “Older people should not be segregated with neighbourhoods,” says Nigel Saunders, director of Architect Pozzoni. The company is drawing up a strategy for the North Manchester General Hospital site where around 500 homes are planned.

6. Involve a wide range of council departments and agencies in drawing up the strategies – Greater Manchester is seeking to become an age-friendly city region. The Greater Manchester Combined Authority set up a housing, planning and ageing group to ensure that in later life, the population has a choice of housing options.

[For further information and access to the article, Kochan, B. \(2025\), 'Advice: Planning for housing for older people', 28 January, in full.](#)

Analysis: New industry plan for industry puts focus on place

- Industry bodies recognise the challenges in realising the ambitions set out in the government's draft industrial strategy, but they also see promise, not least in its place-based approach, finds the author of this article.

At the end of November 2024 consultation closed on a government green paper that looks set to chart the future course of the UK, shaping its economic growth, its places and infrastructure over the next decade.

[Invest 2035: the UK's modern industrial strategy](#), which was published in October, seeks to create a pro-business environment and play to the UK's strengths by focusing on eight key sectors. Those sectors are: advanced manufacturing, clean energy, creative industries, defence, digital technologies, financial services, life sciences and professional and business services.

Place is central to this planned growth trajectory, with one of the draft strategy's core objectives, being: “unleashing the full potential of our cities and regions,” It highlights the untapped potential outside the capital and its surrounding areas, pointing to city regions like Greater Manchester, the West Midlands, and Glasgow, which it says, “are not generating the growth and local prosperity that urban agglomerations of their size should”.

One factor that can help change that, says the green paper, are local growth plans, the decade-long strategies setting out how mayoral combined authorities will use their devolved powers and funding to drive growth in their region. Alongside this, the

[Back to top](#)

consultation paper says the government will consider how to build on existing place-based initiatives to support high-potential industrial clusters and align them behind the industrial strategy. “This includes considering how the industrial strategy can be a ‘lens’ for informing the recommendations for new towns locations, creating new large-scale settlements in places where housing demand constrains the growth of high-potential clusters,” it notes.

Industry response

The green paper also sought input on potential barriers to investment. One of those barriers is “the current state of transport infrastructure in the UK”, the Institution of Civil Engineers noted in its response to the consultation. “The current fragmented system of responsibilities for transport planning and delivery means the UK’s transport network is not perceived as a whole or planned as an integrated, multi-modal system,” it said.

The need for a broader integrated approach was highlighted by property industry body, the British Property Federation (BPF) in its consultation response. It said that “Invest 2035 can only be delivered by an integrated approach encompassing industrial strategy, housing delivery, devolution, taxation policy and the delivery of new infrastructure including energy generation and connectivity.”

Housing body, the Chartered Institute of Housing (CIH) called for the government to pay due attention to housing and construction. “Specifically, the industrial strategy must consider how it can support the aims and objectives of the housing strategy, currently under development by [the Ministry of Housing, Communities and Local Government] MHCLG,” it noted, “and it should similarly consider the role that housing plays as a foundation for health, growth, and prosperity across the UK”.

CIH also highlighted the potential for the government’s ambitions for the advanced manufacturing sector to extend to modern methods of construction (MMC). It pointed to MMC’s potential to help address housing supply and quality challenges, enhance global competitiveness and generate economic growth across the UK, “especially in post-industrial towns and cities, by de-anchoring housebuilding from the physical location of homes”. It pointed to its research, which is said had found evidence that, when developed into a mature industry, MMC could deliver £700 million of investment to deprived parts of England.

[Further information and read the article, Smit, J., ‘Analysis: New plan for industry puts focus on place’ 3 December, in full.](#)

(Please note that you will need to register to access these stories in full, although you can ‘Register free for limited access.’ Visit the [PlacemakingResource](#), scroll to the base of the homepage, and access route within ‘Subscription and Registration’).

[Back to top](#)

Education Latest [February 2024]

[Access the latest Education news](#)

Standley, N. and Burns, J., (2025), '[Phillipson says new Ofsted report cards will help struggling schools](#)' – The government will step in more quickly to help struggling schools based on the findings of new Ofsted report cards, the education secretary has said.

The changes follow a major public debate around Ofsted after a coroner ruled that an inspection [contributed to the death of primary school head teacher Mrs Perry in 2023](#).

For Education sector-related articles, see also: UCEM student, Turner C (2022) '[Apprentice shares experience as she learns](#)', *Built Environment Journal*, London: RICS. #Apprentice

[School forced into daily Raac inspection](#), and UCEM article (2023) '[The concrete crisis: what's being done to address RAAC risks](#)', 13th September. Reading: UCEM.

BBC Latest – Climate [February 2025]

[Access the BBC News, Latest Climate reality check](#)

[Could the UK actually get colder with global warming?](#)

- Off all the possible climate futures, there's a scenario where the United Kingdom and north-west Europe buck the trend of global warming and instead face plunging temperatures and freezing winters.

It's not the most likely outcomes, but a number of scientists fear that the chance of it happening is growing, and that the consequences would be so great that it deserves proper consideration. They are concerned that the ocean currents that bring warm water from the tropics to the North Atlantic could weaken – or even collapse – in response to climate change.

Access [BBC News – Climate](#) [online].

Also: - [A really simple guide to climate change](#). In addition, please visit the '[Sustainability Hub](#)' within *Knowledge Foundations* for further information and related articles.

BBC Latest - Coronavirus – latest developments [February 2025]

Share Covid data, World Health Organisation tells China

- The World Health Organisation has urged China to share data on the origins of the Covid pandemic, five years on from its start in the city of Wuhan. **Also:** [UKHSA data dashboard showing public health data launched](#).

- [Access the BBC Health News, incl. Latest Coronavirus pandemic news](#)

[Back to top](#)

Related Link(s):

[Access the BBC News article entitled, 'AstraZeneca to withdraw Covid vaccine,' in full.](#)

Also:

[Living with Covid plan to restore our freedom - PM](#)

[What are the UK's 'Living with Covid' plans?](#)

The evolution of building surveying education during COVID-19

Case Study: UCEM - In January and February 2020, as the pandemic was starting to gain momentum and spreading around the globe, universities in the UK were beginning to consider how to react. As a sector, UK higher education is relatively familiar with web-based methods of communication, teaching, and learning.

In fact, the University College of Estate Management (formerly the College of Estate Management) and the traditional home of RICS correspondence courses, operates their business totally online.

A lot of universities operate a Virtual Learning Environment (VLE) which allows them to communicate with their students and provides the opportunity to interact with them in terms of online courses and assessments, and as a depository for learning materials.

This allowed the students to revisit the materials to embed or reinforce their learning or to catch up if a session was missed. Common VLE's include Blackboard, WebCT, and Moodle. Their functionality and features are all relatively similar.

Although the physical libraries were closed, universities operate electronic libraries which offer access to a large number of electronic databases, and a growing number of books and journals, ensuring that the students and staff, can continue to access the majority of relevant information for their studies and research.

Note: Further information and the **UCEM e-Library Portrait** is provided later within *Knowledge Foundations*.

[Further information and access to the article 'The evolution of building surveying education during COVID-19', in full.](#)

[Access further information about UCEM's Supported Online Learning > e-Library.](#)

Lessons Learned - Did COVID-19 accelerate construction's digital transformation?

- With many industry professionals forced to work remotely, is now the perfect time for construction to get up to speed with all

[Back to top](#)

things BIM and digital? *Construction Manager* magazine discusses if the coronavirus changed the way we work forever.

David Philp – Global BIM/MIC consultancy director, AECOM says, **“It’s an opportunity to rethink how we can use technology and innovate.” (Philp 2020)**

Mark Boyle – Global design direct, Robert Bird says, **‘Our digital processes lend themselves to remote working.’ (Boyle 2020)**, and Gary Fannon – Technology director, Turner and Townsend says, **‘Early digital adopters will be reaping the rewards.’ (Fannon 2020)**

Andrew Gamblen – Digital manager, Willmott Dixon says, **‘People will become more comfortable collaborating remotely.’ (Gamblen 2020)**

Richard Saxon – CBE Chairman of JCT, client adviser at Deploi BIM Strategies says, **“Wartime scenarios” will push the digital agenda.’ (Saxon 2020)**

[Read the *Construction Management* \(formerly *Construction Manager*\) article ‘Will Covid-19 accelerate construction’s digital transformation’, in full.](#)

Related links:

What will the post-pandemic office look like? - With remote working seemingly here to stay, anecdotal evidence suggests that firms are looking to cut office space by up to 40%. How is the workplace having to evolve to remain relevant?

[Read the *Construction Management* article, ‘What will the post-pandemic office look like?’ in full.](#)

‘Generation Work from Home’ – the impact of default flexible working - The UK government has announced proposals to make flexible working a ‘day one’ right for employees, as part of reforms to the Flexible Working Regulation 2014.

[Read the Shoosmiths article, ‘Generation Work from Home’ – the impact of default flexible working’ in full.](#)

Free content related to Coronavirus, the management of epidemics and the wider impact on society



© Emerald Publishing 2021

Emerald Publishing, one of the UCEM e-Library subscription services, have brought together a number of research

[Back to top](#)

resources related to the Coronavirus group of viruses, and epidemics more broadly.

Emerald collated research and the management of epidemics and made it freely available to assist practitioners and researchers who are working to tackle the current situation and likely consequences. Whilst these materials do not only relate to the current clinical challenges of Novel Coronavirus, but they may also provide relevant context to how the world reacted to other previous Coronavirus outbreaks (notably SARS) and epidemics.

[Access Emerald Publishing's 'Coronavirus, the management of epidemics and the wider impact on society'](#)

Covid-19 and the impact on business

HSTalks

© Henry Stewart Talks Ltd 2021

HS Talks - Interviews with academics and experts from the business community, on the impact of the Covid-19 pandemic, are now available in the HS Talks 'Business & Management' collection that UCEM subscribes to.

1. [The impact of Covid-19 on organisations](#)
2. [The impact of Covid-19 on psychological safety in the workplace](#)
3. [The impact of Covid-19 on cybersecurity and data privacy](#)

[Latest News: Construction Management \(CM\) \(formerly Construction Manager\) \[February 2025\] Careers: 'I'm working with construction SMEs to boost their innovation'](#)

- Dr Graeme Larson FCIQB, associate dean (sustainability) at the University College of Estate Management, on opening up the current discourse around healthy communities.

What are you working on at present? I am working on a number of initiatives, with the key focus being strategic and operational sustainability. This relates to the development of new taught programmes at the [University College of Estate Management](#) (UCEM), along with research projects, publications and the organisation of the International Council for Research and Innovation in Building and Construction (CIB) Tri-Annual World Building Congress.

With my core team, I recently developed and launched an innovative new MSc programme, entitled Innovation in Sustainability Built Environments (iSBE). That programme is IMEA accredited and can also be undertaken through an apprenticeship route. It looks to really challenge the way professionals think about sustainability. We are now working on the development of other programmes to further meet the needs of the sector around sustainability.

[Back to top](#)

Further information, as well as access to read the article in full – Larsen G (2025) 'I'm working with construction SMEs to boost their innovation', *Construction Management* [online], 13 January 2025. Available at: <https://constructionmanagement.co.uk/ucem-graeme-larsen-construction-smes-innovation/> [accessed 20 January 2025]

Also: RAAC Guidance

- [Reinforced autoclaved aerated concrete \(RAAC\): key questions answered](#) *Construction Management*
- [Institution for Structural Engineers: RAAC investigation and assessment guidance page.](#)
- [Office of Government Property: RAAC safety briefing notice.](#)
- [The concrete crisis: what's being done to address RAAC risks](#), 13th September. Reading: UCEM.

Latest News: Global Construction Review (GCR) [February 2025]**Trump's tariffs will stoke US housing crisis, builders say**–

Donald Trump's 25% tariffs on goods imported from Canada and Mexico, announced Saturday (see publication date), will raise the cost of vital materials used in residential construction and fuel the housing affordability crisis, builders have warned. "Tariffs on lumber and other building materials increase the cost of construction and discourage new development, and consumers end up paying for the tariffs in the form of higher home prices," **said** Carl Harris, chairman of the US National Association of Home Builders (NAHB).

Further information, as well as access to read the article in full – Sweet, R., (2025) '[Trump's tariffs will stoke US housing crisis, builders say](#)', *Global Construction Review* [online], 3rd February. Available at: www.globalconstructionreview.com/trumps-tariffs-will-stoke-us-housing-crisis-builders-say/ [accessed 3 February 2025]

Also: [BBC News - Behind the scenes of the Baltimore bridge collapse](#) (12/24)**Shoosmiths UK law firm Insights and Articles**

- Read the latest insights, articles, and commentary from Shoosmiths UK law firm or explore their content library, or listen to the latest podcasts **[February 2025]** surrounding sectors such as **Living (Sector) incl. Commercial, Corporate, Real estate, Dispute resolution & litigation**, covering:

- [A look ahead at building safety for the construction industry](#) (01/25) – Getting to grips with the major legislative changes brought about by the [Building Safety Act 2022 \(BSA 2022\)](#) has been a significant challenge for the construction industry, particularly against a backdrop of political and economic uncertainty.

Also: ▪ [UK real estate eyes potential market rebound in 2025](#) (12/24), and ▪ [Landlord and Tenant Act 1954 – a consultation](#) (11/24)

[Back to top](#)

How developers can prepare now for the Building Safety Act series:

How developers can prepare now for the Building Safety Act: Part 1 of 3

The Building Safety Act received Royal Assent on 28 April 2022. With aspect of the new regime unclear, this series of articles looks at what steps developers can take now.

How developers can prepare now for the Building Safety Act: Part 2 of 3

In Part 2, Shoosmiths discuss the duty holder regime and look at the steps developers can take now to prepare.

How developers can prepare now for the Building Safety Act: Part 3 of 3

In this final part of this series, Shoosmiths take a look at the new gateway regime for higher risk buildings.

Keywords – Real estate, ESG, New How Perspectives, New How,

The future of build-to-rent market Real Estate Podcast series Podcast – Government policy BTR (Build to Rent)

The future of the BTR market from Shoosmiths' Living team:

Podcast series #1 – The future of BTR (Build to Rent)

Issues discussed in this podcast include: Performance of the sector; Rent collection rates; Challenges of lockdown restrictions; How buildings and amenity space will change as a result of the pandemic; and where the market is going.

Podcast series #2 – The future of BTR (Build to Rent)

Issues discussed in this podcast include: Ongoing attractiveness of the sector; Top three things to look for in a BTR scheme; Future challenges for BTR; The role of technology, and BTR housing.

Podcast series #3 – The future of BTR (Build-to-Rent)

In this podcast, the last in this series, issues discussed include: Planning reforms; Permitted development rights; Rise of residential in the high street; Fire Safety; and Rent controls / regulations.

The Pathway to Lifelong Education: Reforming the UK's Skills System

- The UK has a longstanding skills problems which is impacting on economic growth. Adult participation in learning has declined, particularly among part-time students, while fewer people in work are taking up training to reskill or upskill. More

[Back to top](#)

generally, there is a shortfall in vocation and higher technical qualifications.

In this first report, with Ashley Wheaton, Principal, University College of Estate Management acknowledged as one of the contributing experts, the Lifelong Education Commission seeks to recommend how the barriers to adult learning can be removed; what future investment is needed to support this; and what change is needed to ensure the maximum flexibility that will benefit learners and deliver on the promise of a whole system change for lifelong education.

The Report makes a series of recommendations for reform, including:

- A single source of careers advice, to 'professionalise' and regulate careers information, advice and guidance
- Means-tested Maintenance Grants for learners over and above the Lifelong Loan Entitlement, in order to subsidise costs and encourage uptake, particularly among those for whom debt is a barrier
- The abolition of the Equivalent or Lower Qualification (ELQ) rules, to support retraining at higher levels
- Extending the Apprenticeship Levy to cover a wide range of high-quality training, including short modular courses, in order to provide additional flexibility and incentivise employer investment in skills training
- Stronger HE-FE partnerships to provide integrated pathways to higher-level skills; and alignment with industry and online providers to enable better coordination between schools, colleges, universities, and employers.
- Reform of the regulatory framework to simplify the jurisdiction between multiple qualification bodies;
- Learning lessons from Scotland, where 'articulation agreements' offer clear routes between FE and HE allowing students with Higher National Certificates and Diplomas to access the second or third years of degree programmes.

Access the summary and report, 'The Pathway to Lifelong Education: Reforming the UK's Skills System' in full.

Related Links:

FE news.co.uk (2021) '[Reforming the UK's Skills System – First Report from the Lifelong Education Commission](#)' [online]. Available at: www.fenews.co.uk [accessed 8 October 2021]

Learning and teaching reimagined - Exploring the 2020 experience as well as the changing aspirations of the nature and shape of learning and teaching for the future.

Maguire D, Dale L, and Pauli M (2020) [Learning and teaching reimagined: a new dawn for higher education?](#) Bristol: JISC

[Back to top](#)

New guidance from CIRIA - Construction Industry Research and Information Association

Latest update [January 2025] CIRIA is pleased to announce new **free CIRIA practice guidance** and publications that include:

Code of practice for property flood resilience (C790) –

This guidance provides confidence on the use of the standards within the code of practice that provides a benchmark for those procuring and delivering property flood resilience (PFR).

The Management of advanced numerical modelling in geotechnical modelling (C791) -

This guide provides a framework for those who oversee the process, provide the information needed for this task and use the results of the numerical modelling.

Methodology for quantifying the benefits of offsite construction (C792) -

This guidance proposes a framework for comparing construction approaches, making it possible to keep consistent records across projects and identify all the possible benefits available.

Other guides and resources include:

Retrofitting ground gas protection measure (C795)

Grouted anchors and soil nails (C794)

CIRIA Resources (incl. Case Studies)

Note: CIRIA Resources can be accessed via the **VLE e-Library > OpenAthens Library login & Construction Information Service**.

Grenfell Tower Inquiry – Final report published

- The Grenfell Tower Inquiry was created to examine the circumstances leading up to and surrounding the fire at Grenfell Tower on the night of 14 June 2017.

Latest update [February 2025]

Statement from the Panel – The Inquiry statement as the final report is published. Watch - Panel statement on the publication of the Grenfell Tower Inquiry Phase 2 report

Phase 2 Report – The Inquiry has published its report on Phase 2 of its investigations. **Phase 1 Report** – The Inquiry has published its report on Phase 1 of its investigations.

Also: Seventh anniversary statement – The Inquiry Panel made a statement for the 7th anniversary of the fire at Grenfell Tower.

- **December 2024 Newsletter** – The Inquiry has published an update on its work.

Read further information from the ‘Grenfell Tower Inquiry’ website.

[Back to top](#)

Related Links:

By visiting the 'Built Environment Research' section of *Knowledge Foundations* and House of Commons Library, you will note under 'Housing and Planning' and within 'Social policy,' the top research briefings include - **The Cladding External Wall System (EWS)**.

Also:

Cladding: Panels failed fire tests 13 years before Grenfell -





Leaked test results suggest the government and construction industry had early evidence of the dangers posed by cladding, 13 years before the Grenfell Tower fire.

Panels, commonly used on buildings in the UK, failed fire tests carried out in 2004. The Inquiry venue at 13 Bishop's Bridge Road, London, W2 6BU. The results marked "Commercial in confidence," were circulated within an industry advisory group. They were recently passed to the BBC (see publication date) and, until now, never made public. Hundreds of thousands of flat owners are now threatened with large bills because of construction materials which pose a risk in fires.

The 2004 results were among the first from a British test of full-scale building systems, developed in the late 1990s when there were growing concerns in Parliament about the risks of cladding. The tests were part of research commissioned the then Labour government to determine what standards building systems should have to meet.

Symonds T (2021) '[Cladding: Panels failed fire tests 13 years before Grenfell](#)', *BBC News* [online], 16 September. Available at: www.bbc.co.uk/news/uk-58584348 [accessed 3 February 2025]

Related Topics:

-  [Construction industry](#)
-  [UK fire safety](#)
-  [Grenfell Tower fire](#)
-  [Grenfell Tower Inquiry](#)

Also:

[RICS Fire safety Hub \[online\]](#) - containing advice for the public, building owners, landlords, corporate occupiers and RICS professionals and information on fire safety on buildings with external wall systems.

[Shoosmiths Insights](#) [online] - [Lessons from Grenfell: New fire safety responsibilities](#)

Amendments to the Regulatory Reform (Fire Safety) Order 2005 will add to the existing responsibilities of Responsible Persons under the Order which were expanded earlier this year (2023) by The Fire Safety (England) Regulations 2021[1].

[Back to top](#)

Government details fire safety-related changes to planning system

- The government has released details of new requirements in the planning system to bolster fire safety in high-rise residential buildings, in response to the Grenfell Tower Fire.

The changes come in the Ministry for Housing, Communities and Local Government's (MHCLG) plans to introduce '[planning gateway one](#)', which it said would deliver on one of Dame Judith Hackitt's recommendations following her independent review of Building Regulations and fire safety.

The new requirements aim to ensure fire safety matters as they relate to land use planning are incorporated at the planning stage for schemes that involve high-rise residential buildings.

The changes, which came into effect from **1 August 2021** will:

- involve the Health and Safety Executive (HSE) becoming a statutory consultee before permission is granted for development which involves or is likely to involve a high-rise residential building.
- require relevant applications for planning permission to include a fire statement to ensure applicants have considered fire safety issues as they relate to land use planning matters such as layout and access.
- help inform effective decision-making by local planning authorities or the secretary of state so that those decisions reflect and respond to the needs of the local community.

The new requirements will be introduced by making amendments to the Town and Country Planning (Development Management Procedure) (England) Order 2015.

As announced in the Queen's Speech (11 May), the Building Safety Bill is also expected to be introduced this year, which will establish a new building safety regime in England.

[Further information and access to the *Construction Manager* article, 'Government details fire safety-related changes to planning system,' in full.](#)

[RIBA Stirling Prize 2024](#)

The Royal Institute of British Architects (RIBA) Stirling Prize is the UK's most prestigious architecture award. The award is given to the architect of the building thought to be the most significant of the year for the evolution of architecture and the built environment.

RIBA Stirling Prize winner 2024: The Elizabeth Line. [The Elizabeth Line](#) by Grimshaw, Maynard, Equation and AtkinsRéalis **Award** RIBA London Award 2024, RIBA London Building of the Year, RIBA National Award 2024, and RIBA Stirling Prize 2024.

[Back to top](#)

Founded in 1695, Modern College is a charity dedicated to providing older people in need with a home for life, including the provision of residential and nursing care. Further information (including a video of the project) is available via RIBA, [Architecture.com](#) [online].

Skills Agenda: Concerns for Skills Shortages in the 21st Century: A Review into the Construction Industry, Australia

This research paper addresses the underlying, influential factors concerning skills shortages in the Australian construction industry. The influential factors addressed include funding, training statistics, employer expectations, financial limitations, Industrial Relations and immigration.



UTS ePRESS is Open Access and licensed under [Creative Commons Attribution 4.0 International Licence](#).

[Read the full research report 'Concerns for Skills Shortages in the 21st Century](#).

Related Link: Sellers K (2024) '[Talent: where will tomorrow's skilled workers come from?](#)' [accessed at 18 September 2024]

Tomorrow's Engineers



© EngineeringUK 2021

Tomorrow's Engineers brings together resources and evidence to support the engineering community in getting the most out of their engagement activity. It includes information and guidance on a range of topics curated from across the STEM community.

[Access the Tomorrow's Engineers website](#)

RICS insight report: Women in surveying

- Women in surveying and the wider built environment sector face recurring challenges through their careers due to discrimination, bias (whether unconscious or intentional) and inequity in opportunities and systemic practices. This '23 [Women in Survey insight report](#) analyses existing RISC membership data and the results of their flagship 2022 Survey of women in the profession.

RICS's aim is to offer insights on why women are not progressing in their careers and remaining in the profession. This will enable individuals, teams and organisations to reflect and further examine their own behaviours, policies and practices, and more importantly, begin their journey in taking positive action to deliver change with lasting impact.

Also: [Access Women in construction: building a career in a challenging environment](#). Twelve case studies of women working in the construction industry and their experiences.

[Back to top](#)

RICS Market surveys – leading indicators in the real estate industry

Market surveys from the Royal Institution of Chartered Surveyors (RICS) include:

- **UK Residential Market Survey** – Used by government and key institutions, the Resi. Market Survey is a key indicator of conditions in UK residential sales and lettings.

- **Hong Kong Residential Market Survey** – The Hong Kong Residential Market Survey is a leading sentiment indicator of conditions in the Hong Kong residential sales and lettings markets.

- **UK & Global Construction Monitor** – The leading sentiment indicator of the construction markets.

- **UK Facilities Management Survey** – The UK Facilities Management survey is a quarterly indicator of activity and sentiment across the facilities management industry.

- **UK & Global Commercial Property Monitors** – The global commercial property monitors are leading indicators of conditions in commercial property occupier and investor markets around the world.

- **UK Economy and Property Market Update** – The Economy and Property Market Update is a new quarterly assessment of key macro, real estate and construction trends.

- **Market Surveys and Economic Analysis** – Used by governments, central banks, investors and other key stakeholders across the built environment, RICS market surveys provide a source of market intelligence.

Note: Further updates are provided within the 'Latest Property and Construction Statistics' section of *Knowledge Foundations*.

RICS – The Future of Surveying

- We know the challenges facing the built environment and the surveying profession – now it's time to act. We know the challenges facing the built environment and the surveying profession – now it's time to tackle them.

For over 150 years, RICS has led our profession through change, enabling our members to take advantage of the opportunities and manage the risks it presents. This change is now happening faster than ever, requiring us to think strategically about how we deploy our expertise and resource. To continue to provide leadership, we are constantly assessing our role as a standard setter, regulator, educator, and global professional body – to deliver confidence to governments, markets, and the public.

RICS Futures Report 2020 is our action agenda to keep up in a changing world.

[Back to top](#)

Access and download the Futures report to read RICS' full agenda for effecting change and responding to the biggest issues facing the natural and built environment, in full.

[Read the article, 'Future of Surveying' and gain access to the Futures report in full.](#)

GOV.UK, National Statistics - UK House Price Index: reports [[Last updated January 2025](#)]

- The **[UK House Price Index](#)** is a National Statistic.

The **[Northern Ireland House Price Index](#)** is calculated and published quarterly.

The UK House Price Index (UK HPI) captures changes in the value of residential properties. The UK HPI uses sales data collected on residential housing transactions, whether for cash or with a mortgage.

Contents include the following:

- Northern Ireland sales volumes
- Data revisions
- Methodology change for new build property
- November 2024
- About the UK HPI
- Archived reports and data

Data is available at a national and regional level, as well as counties, local authorities, and London boroughs.

The summary report contains:

- Headline statistics
- The economic statement
- Price changes
- Sales volumes
- The property status
- The buyer status for Great Britain (excludes Northern Ireland)
- The funding status for Great Britain (excludes Northern Ireland)
- Housing transactions distributions

[Read the GOV.UK, National Statistics: 'House Price Index: reports.' Last Updated 15 January' in full.](#)

Related Content:

1. UK House Price Index: data downloads September 2022
2. UK House Price Index: reports 2022
3. UK House Price Index: data downloads October 2022
4. UK House Price Index for October 2022
5. UK House Price Index

Collection:

[Land registration: Data](#)

[Back to top](#)

Tackling mental health and wellbeing within the construction industry



© MHFA England

The construction industry reports some of the highest levels of workplace mental ill health.

Over the last three years (see publication date) Mental Health First Aid (MHFA) England has been working with Building Mental Health, the Construction Industry Training Board (CITB) and the Lighthouse Club Construction Industry Charity to create a freely available, industry-wide framework and charter to tackle the mental health crisis in the construction industry.

[Find out more about the social value of the programme](#)

Related Links:

Q&A with Harold Samuel Research Prize (HSRP) recipient, Dr Katharine van Someren

Research is a fundamental aspect of university life. It is used to gain a further understanding for assignments and dissertations and by academics to explore topics that will broaden our understanding of society and the world around us. The HSRP is an annual opportunity for those interested in the building environment to submit a research proposal on a topic that could offer sector-changing insights.

What is the relationship between job and financial security and mental health in the construction workplace? UCEM spoke with HSRP recipient Dr Katharine van Someren, about her research on UK construction workplace poverty. You can access [UK construction workplace poverty: the impact of financial and job insecurity on mental health](#) on UCEM's publication page to learn more about Katharine's research.

Access the article '[Q&A Harold Samuel Research Prize \(HSRP\) recipient, Dr Katharine van Someren](#)' in full.

UCEM mental health strategy

UCEM published its first mental health strategy on 10 May 2021.

The strategy is designed to benefit both UCEM students and staff, having been written with input from both stakeholder groups.

[Back to top](#)

At the core of the document is the vision which states: UCEM will take a whole institution approach to develop one community that enables students of all levels along with staff to prioritise mental health and wellbeing.

There are five strategic aims supporting this vision which are:

1. to create a supportive whole university community that promotes positive mental health, and ensures mental health is a key strategic priority.
2. to ensure the UCEM community is informed and aware of the importance of good mental health and works to tackle the stigma surrounding mental health.
3. to ensure appropriate and timely support is provided to those who need it.
4. to develop links with external support services and stakeholders
5. to use data to evaluate and monitor the effectiveness of mental health interventions and inform future strategic development.

For more details, take a look at [UCEM's mental health strategy document](#). Access the article '[UCEM launches mental health strategy](#)' in full.

Understanding Mental Health in the Built Environment

In May 2020, the CIOB published their report on Understanding Mental Health in the Built Environment. The report, which surveyed people across the globe, presented harrowing statistics of high numbers of workers experiencing extreme levels of stress over a prolonged period, with many people reporting that they had considered taking their own life in 2019.

Access the CIOB's latest report *Understanding Mental Health in the Built Environment*, including the results from the CIOB survey of over 2,000 professionals. [Access CIOB online Policy Portal, & 'CIOB surveys the sector to gather data on mental health & stress'](#)

How can buildings have positive impact on wellbeing?

BSRIA's Henry Lawson discusses the importance of designing buildings that promote 'Wellbeing.' The theory sounds compelling but in practice, creating such building is complex.

[Access and read 'How can buildings have positive impact on wellbeing' in full.](#)

[Read *Construction Manager* article\(s\) entitled, 'Samaritans to work with roofers on mental health' in full,](#) and

[Banner artwork highlights construction suicides](#)

Sustainable outcomes for buildings

The Royal Institute of British Architects (RIBA) has published

[Back to top](#)

guidance on targeting, designing, and evaluating sustainable outcomes for buildings, defining concise measurable set of eight sustainable outcomes that correspond to key UN Sustainable Development Goals and can be delivered on building projects of all scales.

Access the RIBA Sustainable Outcomes Guide

National Trust planning principles

National Trust (NT), a charity that works to preserve and protect historic places and spaces – for ever for everyone.

The National Trust protect historic houses, gardens, mills, coastline, forests, woods, fens, beaches, farmland, moorland, islands, archaeological remains, nature reserves, villages, and pubs. While they are very passionate about open spaces and historic places, they also work hard in other areas too, including the environment, food, farming, transport, and heritage – to name but a few.

Most of the work they do though is affected by much wider global issues, which is why their interests extend far beyond just bricks and mortar.

National Trust (NT) – “Our planning principles”

The National Trust principles are used to guide them in their decision-making on the way land is developed and managed and include:

1. **Seeking to influence** – The NT seek to influence the planning system at local, regional, and national levels,
2. **Supporting spatial planning** – The NT support spatial planning which takes a holistic approach to its environment and its resources,
3. **Sensible management** – The NT promotes the wise management of the natural environment and built and cultural heritage,
4. **Protecting our environment** – The NT will seek to protect wild and remote landscapes from built development or urbanisation.
5. **Using property management plans** – In managing its land through management plans, the NT will support and help to achieve objectives,
6. **Objecting to proposals, where appropriate** – The NT object to land use or marine-based proposals that have a significant adverse impact on its properties and their settings and context, or in its wider interests.
7. **Using a sustainable construction approach** – When proposing development on their land to meet justified needs, the NT will use a sustainable construction approach. This will include the following:

[Back to top](#)

- Minimising resource use and generation of waste,
- Being energy efficient,
- Minimising or preventing all types of pollution and risk of flooding,
- Safeguarding important wildlife, landscape, and historic interests,
- Respecting local/regional distinctiveness, supporting local sources for goods and services where practical, and
- Encouraging community involvement and access.

The National Trusts' conservation process

The NT have developed the following criteria to ensure online suitable projects proceed:

- Adhere to the policies in the relevant local plan,
- Deliver energy efficiency and reduce carbon dioxide emissions,
- Build in harmony with the local environment, built and natural,
- Involve the local community throughout the process.

[Read the National Trust Land use and planning.](#)

[Access the National Trust website and our cause](#) (including Nature and climate, History and heritage, and Communities).

Foster + Partners Projects

Foster + Partners Projects – one of the most innovative architecture and integrated design practices in the world. Over the past four decades the practice has pioneered a sustainable approach to architecture through a strikingly wide range of work, from urban masterplans, public infrastructure, airports, civil and cultural buildings, offices and workplaces to private houses and product design. By visiting their website, you can gain further information about their current and past work, upcoming projects, and gain access to their-

- Image gallery,
- Sketches and drawings,
- Construction, - Facts and Figures, and
- Project downloads.

[Access Foster + Partners Projects](#)

New RIBA Plan of work 2020

RIBA Plan of Work 2020. This blog takes a look at the new RIBA Plan of Work 2020.

What is the RIBA Plan of Work? The Royal Institute of British Architects (RIBA) first published the RIBA Plan of Work.

[Back to top](#)

in 1963. It originally provided a matrix to show the roles of participants in the design and construction processes.

It has since been updated in several editions, most recently in 2020. This has allowed it to adapt to the complexity of modern projects, industry demands and legislative and regulatory requirements.

What changed in 2020? In 2020, key changes were made to reflect the importance of sustainability and Building Information Modelling (BIM) in construction. The Plan of Work now also incorporates issues such as digitisation of the industry, Modern Methods of Construction, ethical issues, the value of aftercare and timing relating to planning applications and procurement.

This has included restructuring and renaming of the work stages from the 2013 Plan of Work:

0 – Strategic definition – no change

1 – Preparation and briefing – brief amended to briefing

2 – Concept design – no change

3 – Spatial coordination – formerly Developed design

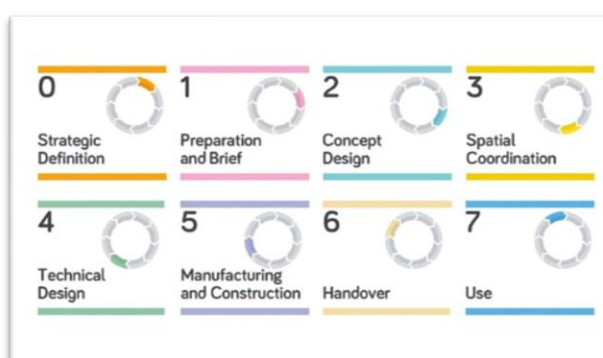
4 – Technical design – no change

5 – Manufacturing and construction – formerly Construction

6 – Handover – formerly Handover and close out

7 – Use – formerly in use

RIBA Plan of Work 2020:



© RIBA 2020

Source: Royal Institute of British Architects (2020) 'RIBA Plan of Work'

Note: The author of this blog, Jen Lemen-Hogarth is an Associate Tutor – UCEM and Partner – Property Elite.

[Access Property Elite's, Building Better Property Professionals, 'New RIBA Plan of Work 2020' \[Blog\], in full](#)

[Back to top](#)

Autodesk and CIOB map the digital construction journey

Autodesk and the Chartered Institute of Building (CIOB) have prepared an infographic to help construction businesses visualise their position on the digital journey.

[Access more information, view the infographic and read the article, entitled 'Autodesk and CIOB map the digital construction journey' in full.](#)

[Access further information from CIOB 'Digital Construction'](#)

- Digital technologies are now an integral part of our built environment. The choice is not when or if built assets will use technology, but rather how much will be used.

Building Information Modelling (BIM)

[UK BIM Framework – BIM Standards, Guides and Resources](#) - the overarching approach to implementing BIM in the UK, brought together by UK BIM Alliance, BSI and CDBB. The guidance is structured as indicated below:

Guidance Part 1 and **Guidance Parts A-F** support the implementation of the overall published ISO 19650 series. **Guidance Part 2 and 3** pick up on content specific to ISO 19650-2 and ISO 19650-3, respectively. Additional **guidance** is also available as part of the **UK BIM Framework** to support the transition to ISO 19650 and Government Soft Landings

[Access UK BIM Framework - Resources](#)

[Latest BIMPlus News and Projects](#)

[February 2025] –

- **Projects – Welcome home, planetarium, 5 December 2024**
 - Digital solutions were important not only in the construction of a new planetarium in Nottinghamshire, but also in its funding.
 - Mansfield and Sutton Astronomical Society (MSAS) had long-held ambitions to transform its site at **[Sherwood Observatory](#)** in Sutton-in-Ashfield into a science discovery centre and planetarium with teaching space, meeting rooms and a café. The site sits on a derelict Victorian subterranean reservoir.
 - As a charity, MSAS sought funding from local government grants, including the Towns Fund and Levelling Up Fund, as well as match funding from local organisations and businesses, donations and direct fundraising.
 - To support the fundraising initiative, project architect **[Anotherkind](#)** invited the public, stakeholders and investors to view the proposed designs of the planetarium within Archicad in 3D. Using VR headsets, users were able to walk around the

[Back to top](#)

planned building.

Anotherkind architect Dan Kilsarski-marlow explained: “The project was so complex, so being able to get people who aren’t familiar with the designs to explore the **Archicad** model and understand the complexity was great, especially with the project being so important for the region.”

Underground challenges

One of the main challenges Anotherkind faced was the subterranean Victorian structure. The reservoir is a large, underground brick chamber approximately 7m high and 25m in diameter. From the outset in conservation projects and, using Archicad’s renovation filter, it was able to model the site using the 2D topographical information, and control how the proposed elements merged into the existing context with both the demolition and proposed filter options.

To produce the complex structure that formed part of the existing site model, a combination of meshes and morphs were sculpted to the required forms with the Solid Element Operations command.

“One of the most challenging components of the project is managing the environmental conditions of two completely contrasting spaces, which are designed and constructed to suit their period, but behave differently,” Kilariski-Marlow said. “With the help of the Archicad BIM model in collaboration with the consultant team, we were able to build complex geometries, navigate the interfaces between old and new and coordinate the structural and services information through clash detection.”

Other area(s) covered in this article include the following:

3D interrogation – Main contractor on the project was GF Tomlinson. Its team used **BIMx** on a tablet PC to virtually walk around the design while on site. This eliminated the need to print the plans and meant they could conduct onsite meetings with the site manager.

Also:

- [Digital collaboration drives Altu and Elliott on Dublin project](#)
- [Maber user Archicad to aid collaboration on medical research facility, and](#)
- [Communicating and solving design changes with technology.](#)

Gain access to further information and full access to the project case study article by BIMplus Author (2024), entitled, [‘Welcome home, planetarium’](#), 5 December, **BIMPLUS** Projects.

[Back to top](#)

Other BIMPLUS Projects include:

- **Projects – Dublin university uses campus twin to test smart city tech**, 10 September 2024

- Dublin City University is using a digital twin of its campus to test smart city technology, bringing AI and a digital twin together.

Gain access to further information and full access to the project case study article by Gawde P (2024), entitled, '[Dublin university uses campus twin to test smart city tech](#)', BIMPLUS Projects.

- **Projects – Digital collaboration drives Altu and Elliott on Dublin project**, 10 September 2024

- ALTU Architects and Elliott Group worked together to deliver the Eglinton Place residential scheme in Dublin, with Archicad and BIMx driving their digital collaboration.

Gain access to further information and full access to the project case study article by BIMplus Author (2024), entitled, '[Digital collaboration drives Altu and Elliott on Dublin project](#)', BIMPLUS Projects.

- **Projects – Sir Robert McAlpine's role in the world's smartest museum**, 31 May 2024.

- Can a heritage museum be smart too? That's the plan for the new Museum of London in London's historic Smithfield market, opening in 2026 under the name of London Museum.

Gain access to further information and full access to the project case study article by Smith, K., (2024), entitled, '[Asir Robert McAlpine's role in the world's smartest museum](#)', BIMPLUS Projects.

- **Projects – Airedale hospital tackles RAAC with GIS-based digital twin**, 25 March 2024.

- West Yorkshire-based Airedale General Hospital is saving time monitoring its issues with reinforced autoclaved aerated concrete (RAAC) thanks to a digital twin developed by BIS Consult.

- **Projects – The digital transformation of Auckland's water works**, 25 March 2024.

- The agency tasked with surveying 45,000 bridges in France in just 18 months turned to Esri's ArcGIS platform to facilitate its work.

Gain access to further information and full access to the project case study article by Farkadi, F. and Webster, S. (2024), entitled, '[The digital transformation of Auckland's water works](#)', BIMPLUS Projects.

[Back to top](#)

BIM in action: 2020's top five projects

22 December 2020

- Hospitals, housing, hotels: **BIMPLUS** covered case studies of BIM in action in all sorts of construction projects across the world. Given what happened in 2020, it's not surprising that three of the most read case studies focus on hospitals.

2020's top five projects (and all covered within this and previous issues of *Knowledge Foundations*) incl.

1. [Sisk reap rewards of high-tech approach at Wembley](#)
2. [Finland's Hospital Nova uses VR to involve staff in building](#)
3. [NHS Nightingale Hospital, East London – how BIM played its part](#)
4. [Mace uses AI tech on Mayfair project to meet covid-19 safety challenges.](#)
5. [AI tracks work quality at Norway's Stavenger Hospital.](#)

[Access BIM+ that include project entitled, 'BIM in action: 2020's top five projects' available in full.](#)

Related BIM+ Projects

- **(1) Project: [John Sisk relies on BIM best practice to deliver Malmo data centre](#), 2nd November 2020.**

- John Sisk & Son is nearing completion on a data centre project in Malmo, Sweden. Adopting BIM best practice has been crucial to keep construction on programme given a fast-tracked programme amid the Covid-19 pandemic.

The John Sisk & Son team has nearly 40 years of experience in data centre construction and has brought a digital project delivery approach to the Malmo project.

Sisk highlights some significant outcomes:

- The Sisk team-built dashboards that stored live clash trend reports to track progress weekly, resulting in a 50% efficiency increase in the BIM management process compared to traditional, manual methods of construction coordination without the automating power of the cloud.
- The tight integration between BIM 360 Docs, Microsoft Power BI, and Sisk's own "Design Changes Control" dashboards provided the commercial teams with a faster way to visualise the cost and/or schedule impacts, reducing the overall take-off by a potential 40%
- By using BIM 360, the project continued uninterrupted as construction continued in Sweden during the Covid-19 pandemic.

[Back to top](#)

- **(2) Project: [Finland's Hospital Nova uses VR to involve staff in building](#), 28th April 2020.**

Lead Contractor: The Central Finland Health Care District
BIM Tools: Tridify

- Innovative processes have been used in the co-design of Finland's new Hospital Nova using BIM models and involving more than 350 staff.

- **(3) Project: [NHS Nightingale Hospital, East London – how BIM played its part](#), 5th May 2020.**

Client: Barts Health NHS Trust, Royal Free London NHS Foundation Trust

Lead Contractor: Lead Designer: BDF

BIM Tools: Autodesk Revit

- The UK's newest (see publication date) and largest hospital, based at the ExCel conference centre in London's Docklands, is designed to care for up to 4,000 people affected by Covid-19. The hospital is now in standby mode and will be used should cases in the London area rise again.

- **(4) Project: [Mace use AI tech on Mayfair project to meet Covid-19 safety challenges](#), 1st October 2020**

- Work was already underway on Lodha's No 1 Grosvenor Square flagship project when the lockdown and then social distancing added to the normal construction challenges.

Client: Lodha; Main contractor: Mace

Balancing the many requirements of a building project – cash flow, cost, quality, and timelines – is always a significant challenge for project leadership. The Covid-19 pandemic made the balancing act even more intense, costing projects valuable time at the start of lockdown and requiring adjustments to ensure the health and safety of all personnel on site as production restarted.

- **(5) Project: [AI tracks work quality at Norway's Stavanger Hospital](#), 21st June 2020.**

Client: Stavanger University Hospital

BIM Tools: 100% International open standards, compatible with Revit, ArchiCAD, Solibri and others

- Oslo-based BIM developer Imeroso has been given responsibility to monitor work progress in one of the biggest public construction projects in Scandinavia.

[Access the Chartered Institute of Building's \(CIOB\), BIM+ articles, projects, case studies and more, in full.](#)

Latest BIM news – 10th annual BIM report 2020 available
NBS 10th National BIM Report 2020 - It illustrates how usage and perceptions of BIM have changed since 2011, progress made as an industry, and anticipated changes in the next decade.

Construction Information Service (CIS) Insights

The latest edition [**February 2025**] of NBS CIS *Insights* focuses on – **Sustainable Futures UK Report 2024**, and covers -

- Insights from industry professionals' perspective,
- Sustainable outcomes and the barriers we face, and
- The future of sustainability policy and the role of specification and project information.

[Back to top](#)



Property and Construction Statistics

Latest Property and Construction Statistics from RICS:

- Input from RICS Professionals ensure RICS surveys are leading indicators in the real estate industry.

Latest: Market Surveys - RICS [February 2025]

UK Economy and Property Market Update, November 2024

- Tentative signs of improvement evident across property markets.

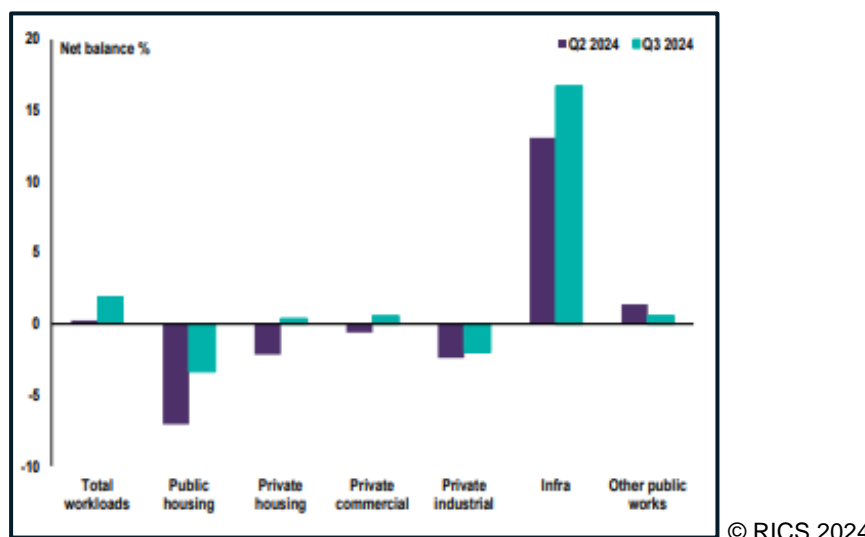
Summary: The recent continued easing in inflationary pressures allowed the Bank of England to deliver a second cut to policy interest rates in November, with the general macro backdrop turning a little more favourable for property markets during Q3. Indeed, data from the suite of RICS surveys points to a modest improvement in sentiment, with forward-looking indicators also exhibiting more positive momentum. Nevertheless, with the Chancellor's October 2024 Budget widely seen as inflationary, and therefore likely to limit the scope for further monetary policy loosening in the months ahead, this could weigh on the recovery as we move into 2025.

Construction Sector – Official data signals a modest improvement across construction output recently, with the latest estimate pointing to a 0.8% increase in the three months to September. When viewed in annual terms, however, the trend is more subdued, as output is still down by 0.4% compared with a year earlier. Meanwhile, the headline measure of activity captured in the Q3 2024 RICS *UK Construction Monitor*, although no longer negative, remains somewhat flat (posting a net balance of +2%). Even so, Chart 10 provides a sectoral breakdown of workloads and shows that all sectors have at least seen a small improvement in their respective net balances compared to the previous quarter.

[Back to top](#)

Infrastructure remains the strongest performing sector (+17% net balance), continuing the prolonged positive trend in growth seen over previous quarters.

Note: Previous quarters have been covered extensively within *Knowledge Foundations*. Current and archived copies are available via section 6 of the VLE e-Library as well as the Research Repository.



Source: RICS Economics Research: *RICS UK Economy and Property Market Update* (November 2024), London: RICS, p5 - Chart 10.

[Read the full piece of research 'RICS UK Economy and Property Market Update, November 2024'](#)

Also:

[UK Economy and Property Market Chart Book, Q4 2020](#)

- Agreed sales rise over the month with expectations modestly positive regarding the near-term outlook

UK Residential Market Survey: December 2024

- Market conditions still reasonably solid to end the year but the recent macro environment presents headwinds moving forward.

- Sales volumes improve slightly in December
- Buyer enquiries metric turns a little flatter, while respondents report a further increase in new instructions,
- House prices now seen rising across all parts of the UK.

The December 2024 *RICS Residential Survey* results point to the slightly brighter picture seen over recent months remaining in place, with most activity metrics still in modestly positive territory. That said, while near-term expectations are, for the time being, consistent with this trend being broadly sustained over the coming months, the macroeconomic environment looks to have turned more challenging of late. Indeed, the recent rise in bond yields, along with other lending rates, if sustained, may prove to be a significant headwind moving forward.

[Back to top](#)

During the final month of the year, a headline net balance at +5% of respondents cited an increase in new buyer enquiries. This is slightly down from the +11% reading registered in each of two previous months and does in fact mark the least positive return since July. As such, the December figure is signalling a flatter trend now coming through in terms of buyer demand.

Notwithstanding this, respondents did report that the volume of agreed sales improved slightly over the month, evidence by the net balance moving to +7% from a reading of +1% in November. Looking ahead, near-term sales expectations are mildly positive, albeit the latest net balance of +16% has been scaled back from readings of +19% and +29% submitted over the two months prior. Regarding the twelve-month outlook, a net balance of +37% of contributors foresee sales activity rising, broadly in-line with the results across the previous three months.

Looking at supply, the new instructions indicator posted a net balance of +14%, representing the sixth successive report in which this measure has been in positive territory. Alongside this, when compared to the equivalent period twelve months ago, the number of market appraisals undertaken appears to have levelled off recently, with the net balance now sitting in neutral territory at -3% (the softest reading since December 2023). Consequently, this may translate into a more subdued flow of new listings coming through in due course.

[Read the latest RICS UK Residential Market Survey: December 2024 in full.](#)

RICS - SPACIOUS 千居 Hong Kong Residential Monitor / Market Survey: December 2024

- Sales market retreats while the lettings market remains resilient.

- Headline confidence index falls further into negative territory,
- Buyer demand deteriorates again in the sale market, and
- Lettings market remains resilient.

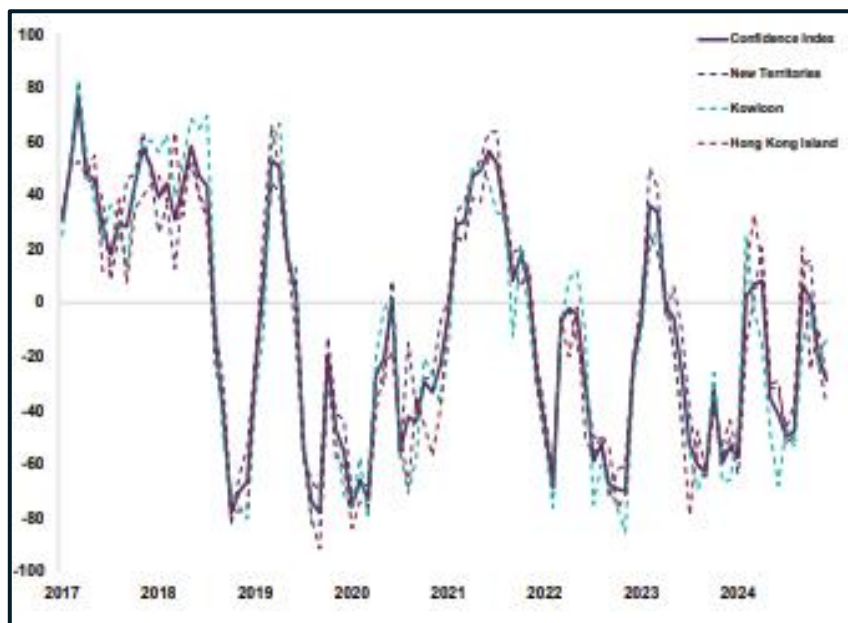
The results from the December *RICS-Spacious Hong Kong Residential Property Monitor* point to a contrasting picture between a weakened sales market and a resilient lettings market (as illustrated in Chart 1). Indeed, this Chart shows subdued sentiment in the sales market with the headline confidence index falling further from -20 to -29 over the month. The negative feedback continues to be seen across all districts in the residential sector. Meanwhile, positive signals are visible in the lettings market as supported by robust tenant demand.

Both sales volume and price remain sluggish – At the aggregated level, the sales volumes did not bounce back after the decline in November (as highlighted in previous *RICS Hong Kong Residential Monitors* and reported in previous issues of *Knowledge Foundations*).

[Back to top](#)

The latest number of the agreed sales series has stayed in the negative territory, albeit less so with a net balance of -29% (vs. -36% in November 2024). The downbeat signal is mirrored in the forward-looking series, with a net balance of -20% for the three-month sales expectation metric.

Chart 1: Confidence Index*:



© RICS 2024

Source: RICS Economics Research: *RICS Hong Kong Residential Monitor – December 2024*, London: RICS, p1 - Chart 1.

* The Confidence Index is a composite measure capturing overall market momentum, encompassing variables on short-term price and sales expectations.

[Read the latest RICS HK Residential Monitor: December 2024 in full.](#)

- *RICS-Spacious HK Residential Monitor* is a monthly guide to the trends in HK's housing market. The report is available from the [RICS website](#) along with other surveys covering global housing, commercial and land markets, as well as construction industry.

Global Commercial Property Monitor (GCPM), Q4 2024

- Headline sentiment index flat to end the year but the investor enquiries metric did rise slightly in several markets.

- The headline RICS Commercial Property Sentiment Index (CPSI) was little changed in Q4,
- Credit conditions continue to improve, albeit more modestly, despite the rise in bond yields,
- Investor enquiries metric generally turned more positive, and
- Data centres likely to deliver strongest returns over the next twelve with prime assets more generally continued to be favoured.

[Back to top](#)

The Global Commercial Property Monitor (GCPM) Q4 2024 continued.

At a headline level, it could be argued that the tentative signs of an improvement in global real estate sentiment in the third quarter of last year (see publication date) appeared to stall as 2024 drew to a close. The reading designed to capture confidence amongst respondents to the RICS Global Commercial Property Monitor (GCPM) came in at -8 compared with -7 previously and -11 in Q2. To be clear, the fieldwork for the Q4 survey actually closed on Thursday 16th January so responses (at least in some markets) are likely to have been influenced by the deleterious trend in major bond markets that continued into the early part of the New Year.

Perceptions regarding market cycle provide further reassurance – Although the headline sentiment metrics may not have followed through on the Q3 improvement, other results that form part of the survey are, on balance, suggestive of a modest positive shift in the mood music. The aggregated global feedback as to where in the cycle respondents perceive their local market to be is depicted in Chart 6. As in Q3, just under one-third of contributors suggest real estate is still in the downturn phase with a little over one-third contending that it is not in an upturn. Disaggregating the results, however, provides more interesting reading.

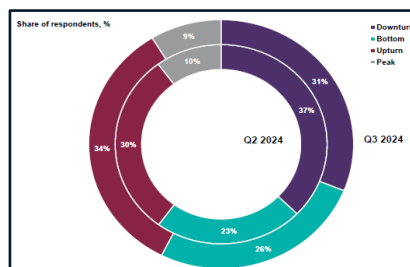
The proportion of respondents who view the real estate market to be in a downturn globally now stands at 32% (compared to 31% in Q3, 2024), as shown in Chart 6 (b), with a further 25% (compared with 26% in Q3, 2024) perceiving it to be at the bottom of the cycle.

Chart 6: Global Perceptions Regarding Point in Cycle

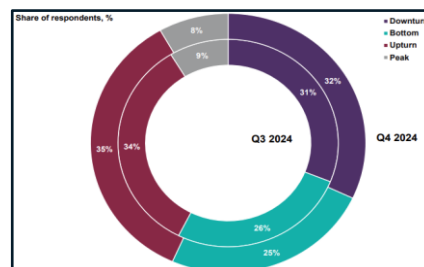
Share of respondents, %



(a) Q2, 2024 and Q3, 2024



(b) Q3, 2024 and Q4, 2024



© RICS 2024

Source(s): RICS Economics Research: RICS Global Commercial Property Monitors, (a) Q3 2024, London: RICS, p4 - Chart 6, and (b) Q4 2024, London: RICS, p4 - Chart 6.

[Read the latest RICS Global Commercial Property Monitor, Q4 2024 in full.](#)

[Back to top](#)

Latest Statistics from the Office for National Statistics (ONS)

[UK economy latest](#) – A roundup of the latest data and analysis on the UK economy, business and jobs following Brexit and during the coronavirus (COVID-19) pandemic.

Construction Industry highlights

[Construction Industry highlights include](#) – **Construction output in Great Britain: November 2024.**

- Short-term measures of output by construction industry in November 2024.

What's covered in the latest bulletin?

- Monthly construction output is estimated to have grown by 0.4% in volume terms in November 2024; this follows an upwardly revised decrease of 0.3% in October 2024.
- This increase in monthly output came from rises in both new work (0.3%) and repair and maintenance (0.5%).
- At the sector level, five out of the nine sectors grew in November 2024; the main contributors to the monthly increase were private commercial new work and non-housing repair and maintenance, which grew by 3.1% and 1.1%, respectively.

[Read the full statistical bulletin, 'Construction output in Great Britain: November 2024.'](#)

Also:

[Latest release - Construction statistics, Great Britain: 2021](#) - A wide range of statistics on the construction industry. including the value of output, new orders by sector, number of firms and total employment, insolvencies and Output Price Indices.

Latest Statistics from HSE – Health and Safety Executive

Latest Key figures for Great Britain (2022/23)

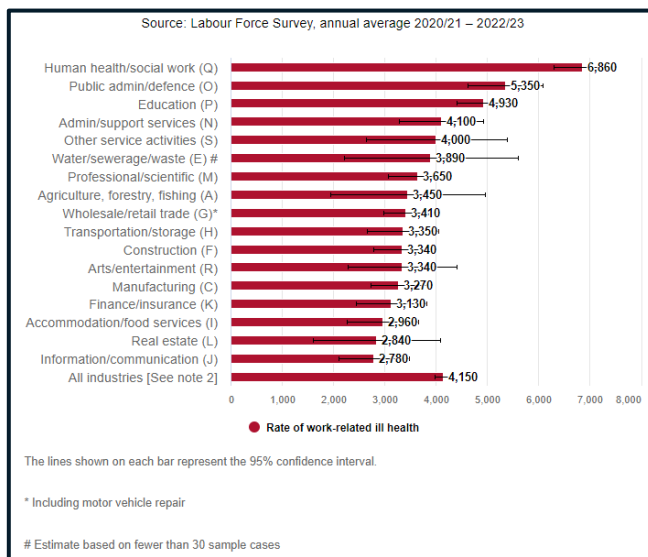
In 2022/23 an estimated 1.8 million workers were suffering from an illness they believed was caused or made worse by their work and 561,000 workers sustained 561,000 (N.B. 441,000 in 2020/21) workers sustained a non-fatal injury at work. [Source: Self-reports from the Labour Force Survey]. However, the risk of injury and work-related ill health varies across industry, being more likely in some industries than others.

The chart overleaf shows how the overall rates of self-reported work-related ill health and workplace injury vary between industry groups. While the chart shows the overall picture for each industry group, this may be masking differences at more detailed levels (for example, illness type or more detailed industry sub-groups).

[Back to top](#)

From the Health and Safety Executive (HSE), ‘Self-reported work-related ill health’, and covering ‘Construction’:

Rate of self-reported work-related health by industry for people working in the last 12 months (per 100,000 workers)
[Note 1], [Note 2], [Note 3]



© Crown copyright 2024

Note 1: Industry groupings based on the section level of the 2007 Standard Industrial Classification (SIC), **Note 2:** Restricted to injuries/ill health in current or most recent job. **Note 3:** These estimates are based on results from a survey and are subject to sampling error.

Source: HSE (2024) ‘Self-reported work-related ill health’, Bootle: HSE [online]. Available at: www.gov.uk/statistics/industry [accessed 3 February 2025]

[Access further information on health and safety statistics from HSE – Health and Safety Executive.](#)

[Back to top](#)



Built Environment Research

Latest Policy and Research from:

1) Savills Market Trends

- LATEST: Market Trends: Savills.com [February 2025]

2025 Global Investment Outlook

Savills Market Trends – Property investors can look forward to better times ahead, as cyclical headwinds subside. The Savills global research network anticipates a recovery in real estate capital markets, with investment activity and capital values expected to improve in 2025.

Source: Salmon O, and Rushton C (2024) ‘**2025 Global Investment Outlook**’ [online], December 2024. Available at: www.savills.com/impacts/market-trends/2025-investment-outlook.html [accessed 3 February 2025]

[Back to top](#)

Also: Market Trends 2025

- [Offices in equilibrium: Spotlight on London](#)
- [Offices in equilibrium: Spotlight on New York City](#)
- [Europe and Middle East investment outlook and tips](#)
- [US investment outlook and tips 2024](#), and
- [Asia Pacific investment outlook and tips 2024](#).

2025 Forecasts- Global real estate investment: 2025 and beyond

- After a sharp downturn in real estate capital markets, sentiment is starting to turn. But how quickly will recovery follow? Savills project global real estate investment will rise by 7% to US\$747 billion in 2024, with further growth to US\$952 billion forecast for 2025.



© Savills Market Trends, 2024

The past 18 months (see publication date) has been notably quiet for global real estate capital markets. In 2023, investment fell to US\$699 billion, the lowest level since 2012, with the first half of 2024 following a similar trend. Much of this downturn is due to cyclical factors, particularly a generational shift in interest rates in most major markets.

But these cyclical factors are starting to reverse. Central banks across major economies have begun to cut policy rates, fears of a global recession have largely been quelled and occupational markets remain resilient. The fundamentals of real estate **continue to attract institutional investors**.

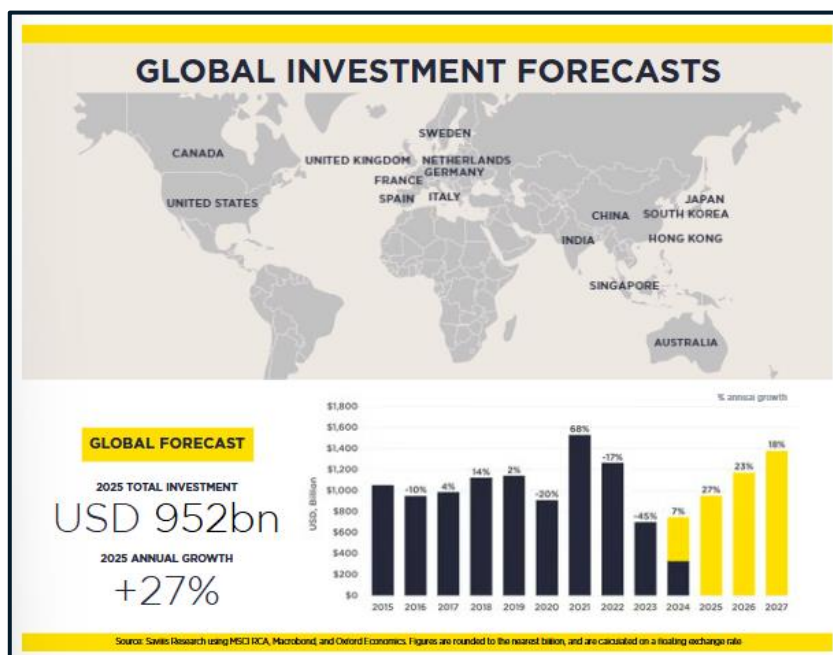
So what do these positive signs mean for future global real estate investment?

We've already seen some early signs of this optimism coming through capital markets. Investment turnover has stabilised, with institutional investors starting to return to the market, increasing their market share to the highest level since 2021.

Savill's forecasts, which cover over 90% of the global market, expect turnover to increase by 7% by the end of 2024, reaching US\$747 billion. This recovery is anticipated to gather momentum in 2025, with investment forecast to rise by 27% to US\$952 billion. By 2026, global activity is expected to surpass the US\$1 trillion mark for the first time since 2022.

[Back to top](#)

Future global real estate investment



© Savills Market Trends, 2024

Source: Savills Research using MSCI RCA, Macrobond, and Oxford Economics.

Global investment throughout this article refers to investment in Australia, Canada, China, France, Germany, Hong Kong, India, Italy, Japan, Netherlands, Singapore, South Korea, Spain, Sweden, United Kingdom, and United States. In total, this represents over 90% of global investment.

Regional investment forecasts – Much of this initial growth is supported by a recovery in Europe. With all major central banks in the region having started rate cutting cycles in the summer, commercial real estate is looking a lot more attractive. Pricing plays a role here too – values across Europe have corrected quickly, allowing buyer expectations to be met. However, it is important to take base effects into account for context; Europe experienced the largest decline in investment in 2023.

Access further information and the article ‘[Global real estate investment: 2025 and beyond](#)’, in full.

Source: Rushton, C., and Salmon, O, (2024) *Global real estate investment: 2025 and beyond*, Savills [online]. Available at: www.savills.com/impacts/market-trends/global-real-estate-investment-2025-and-beyond.html [accessed 12 November 2024]

Also: [Market Trends – ‘The total value of global real estate’](#), in full.

Read Savills Investment tips and trends by region -

- [Read more EMEA tips](#), ○ [Read more Asia-Pacific tips](#)
- [Read more North America tips](#)

[Read Savills World cities prime residential forecasts](#)

[Back to top](#)

[Read the full Savills Impact Publication, 'The Impact of Covid-19 on real estate', 2020'](#)

[Savills \(2020\) 'Welcome to Impacts 2020' Impacts, May, Savills \[online\]. Available at Savills.com](#)

2) Joseph Rowntree Foundation (JRF) -

- Inspiring Social Change: The Joseph Rowntree Foundation is an independent social change organisation working to solve UK poverty.

A framing toolkit: How to talk about homes

Part of [Talking about housing](#)

Related topics – Housing; Affordable housing; Housing Market

- You can download the framing toolkit to help tell a new story about homes. It contains essential guidance and tips for how to communicate to the public about the important of decent and affordable homes as fundamental to a healthy, decent life.

The toolkit offers practical examples to bring to life the five framing principles for explaining about homes and the housing crisis. These frames are designed to support communicators and campaigners in the housing sector and beyond.

This FrameWorks UK toolkit is part of the Joseph Rowntree Foundation and the Nationwide Foundation's co-funded Talking about Housing project.

Access the JRF(2023) 'How to talk about homes – toolkit' (1.41 MB), in full.

Also gain access to the following free downloads that include: Research Findings and Related Links surrounding:

- **Housing**
 - Affordable Housing
 - Home Ownership
 - Housing Market
 - Private Rented Sector,
 - Social Housing
- **Society**
 - Emerging Futures,
- **Living Standards**
 - Cost of Living,
- **People**
 - **Child poverty**, and

UK Poverty:

JSR article entitled, 'UK Poverty 2022: The essential guide to understanding poverty in the UK' in full

[Back to top](#)

[JRF \(2022\) UK Poverty 2022: The essential guide to understanding poverty in the UK \(3.71 MB\).](#)

[Read the JSR report entitled, 'UK Poverty 2020/21' in full](#)

[Read the article 'UK Poverty 2019/20 Housing' in full](#)

[UK Poverty Statistics from the Joseph Rowntree Foundation -](#)

The latest UK poverty data, statistics and analysis from JRF's Analysis Unit. This **online toolkit** can be used to find information about poverty rates and related issues in the United Kingdom.

[JRF Spring Budget 2021 analysis](#)

[JRF Analysis of the 2020 Spending Review](#)

3) The Smith Institute

- The Smith Institute is a leading independent 'think tank' which promotes progressive policies for a fairer society. They provide a high-level forum for new thinking and debate on public policy and politics. Through research, reports, briefings, monographs, events, lecturers, education, and their website, the Institute offers a platform for thought leadership on a wide range of topics.

Making retirement living affordable: the role of shared ownership for older people

APPG on Housing and Care for Older People (2023)

The Smith Institute supported the All-Party Parliamentary Group (APPG) on Housing and Care for Older People inquiry and report into the role of shared ownership housing for older people.

The report from the Inquiry Panel highlights and evaluates the key issues concerning the development of the market for shared ownership for older people, with particular regard to the government's current Older People's Shared Ownership (OPSO) scheme. It then, in respective sections on the key issues, comments on the current situation and set out recommendations for improving the offer and supporting the growth of the sector.

[Read the full piece of research, 'Making retirement living affordable: the role of shared ownership housing for older people.'](#)

Temporary accommodation at crisis point: Frontline perspectives from London and Greater Manchester

Farrelly, M., and Hackett, P, The Smith Institute (2022)

- This report examines statutory homelessness and temporary accommodation (TA) in London and Greater Manchester.

[Back to top](#)

It is a public policy facing report to shed light on what is currently happening with the supply and demand of TA and to open up a wider discussion around what can be done to improve the situation going forward. It is not intended as an academic or technical comparative analysis of the different boroughs homelessness activities.

The findings and evaluations are based on extensive desk research and one to one interviews with housing officers and other housing professionals, housing providers, investors, politicians, experts, homelessness charities and campaigners. We also hosted two virtual roundtable discussions in the Spring of 2022 on Greater Manchester, chaired by Paul Dennett, Salford City Mayor and Deputy Mayor for Greater Manchester, and on London, chaired by Tom Copley, London Deputy Mayor for Housing and Residential Development.

Where relevant we have highlighted what specific boroughs are doing and have included examples of best practice and new ideas and approaches. We have laced the report with anonymised quotes from the interviews and made reference to the work of the GLA, London Councils, GMCA and other relevant organisations. We have evaluated the data and opinions and on the basis of what we've offered a series of talking points and policy recommendations. The concept of a TA system as used in this report combines the boroughs' statutory duties under the Homelessness Reduction Act (2017) and their responsibilities under relevant housing legislation and regulations.

The report covers the GLA and the 32 Greater London boroughs and the GMCA and its boroughs (Bolton, Bury, City of Manchester, Oldham, Rochdale, Salford, Stockport, Tameside, Trafford, Wigan). The data was drawn mainly from DLUHC, GLA, GMCA and other official statistics, as well as information collated by the boroughs, housing charities and professional bodies.

[Read the full piece of research, 'Temporary accommodation at crisis point: Frontline perspectives from London and Greater Manchester.'](#)

Understanding the impact of almshouse charities in the pandemic.

Hunter, P., The Smith Institute (2022)

- This independent study, commissioned by The Almshouse Association, seeks to understand the impact of the pandemic on almshouse charities and their residents, examine the difference almshouse charities have made, identify the lessons that can be drawn from the past two years; and highlight challenges the sector faces going forward.

[Read the full piece of research, 'Understanding the impact of almshouse charities in the pandemic.'](#)

[Back to top](#)

Housing allocations and the vacancy chain: how coordinating chains can better meet housing needs and tenant choice.

The Smith Institute (2022)

- This report is an exploration into the factors influencing vacancy chains in London's social housing, covering general needs stock held by councils, ALMOs and housing associations, with interplays from supported and specialist housing. The report is in five sections, including a set of recommendations.

[Read the full piece of research, 'Housing allocations and the vacancy chain: how coordinating chains can better meet housing needs and tenant choice.'](#)

Pulling at the Roots: A report by the Southwark Council Housing Resident's Working Part on understanding and mitigating the economic and financial impacts of Covid for residents of council housing in Southwark

Southwark Council Housing Residents' Working Party (2021)

The Smith Institute provided support for the Southwark Council Housing Residents' Working Part on understanding and mitigating the economic and financial impacts of Covid for residents of council housing in Southwark.

To get a better understanding the Council helped establish a Council Housing Residents' Working Party (RWP), comprising tenants and homeowners in June 2021. The Working Party was tasked to examine the economic and financial impacts of the COVID pandemic, including paying special attention to who has been worst affected, what support the Borough's council housing residents have had, and what is needed to improve this morning forwards.

The RWP took oral and written evidence from Council officers, housing and debt experts, and representatives from the community and voluntary sector, considered government and Council held data on rent arrears and the impact of Covid; and conducted its own survey of over 1,800 tenants and leaseholders.

[Read the full piece of research, 'Pulling at the roots: A report by the Southwark Council Housing Residents' Working Party on understanding and mitigating the economic and financial impacts of Covid for residents of council housing in Southwark.'](#)

A Just Transition: Ensuring responsible investment for a just transition to net zero.

The Smith Institute (2021)

The Smith Institute supported the All-Party Parliamentary Group for Local Authority Pension Funds inquiry into 'Responsible investment for a just transition.'

[Back to top](#)

This report is based on evidence sessions and written submissions to that inquiry from investors, industry, academics, community groups, trade unions, and other non-government organisations. The inquiry report seeks to inform politicians, policymakers, stakeholders and the public on the roles and responsibilities that investors can play, with the support of their members and government, in enabling a just transition to net zero carbon emissions.

[Read the full piece of research, 'A Just Transition: Ensuring responsible investment for a just transition to net zero.'](#)

Publications – The Smith Institute

[- The Living Wage Dividend: maximising the local economic benefits of paying a living wage.'](#)

[- Planning for the recovery and the shift towards homeworking: implications for poverty in outer London.](#)

[- A National Housing Conversion Fund: buying properties to boost affordable housing supply.](#)

[- Falling behind: The impact of Universal Credit on rent arrears for council tenants in London.](#)

[- Making Housing Affordable after Covid-19: A follow up report from the Affordable Housing Commission.](#)

[- Making Housing Affordable Again: Rebalancing the Nation's Housing System: The final report of the Affordable Housing Commission.](#)

4) CBRE Insights and Research

The CBRE Research blog showcases a variety of informed viewpoints, spanning all major property sectors that include –

- **Offices** – Discover up to the minute and future looking trends in the Office sector for occupiers, landlords, investors and developers
- **Retail** in detail,
- **Industrial** – CBRE 'shed' light on all things industrial,
- **Residential** – CBRE's 'house' vide on all things residential, and
- **Investment** – addressing the challenges and opportunities facing commercial real estate property investors

[Access the CBRE website: Insights and Research](#)

[Access 'Sustainability in real estate decision-making: views from the coal face.'](#)

LATEST: CBRE (2025) 'UK Real Estate Market Outlook 2025'

Also: [CBRE \(2024\) 'UK Real Estate Market Outlook 2024'](#)

[Back to top](#)

5) CABE – Chartered Institute of Building Engineers

Latest news: Fire Safety Act and Regulations

- **Changes to Building Regulations for fire safety in specific types of buildings**
 - On 1 June 2022, the Department for Levelling Up Housing and Communities (DLUHC) announced the outcome of its consultation on extending controls on use of combustible materials, and additional fire safety measures in higher risk buildings. These will come into force on 1 December 2022.
 - [Further information on the Changes to the Building Regulations](#) and
 - [More details can be found in the Amendment Document issued by DLUHC](#)
- **Coming into force of Schedule 1 of the Fire Safety Act relating to Fire Risk Assessments**
 - The Fire Safety Act 2021 will come into force in 2023, but ahead of this Section 1 – Premises to which the Regulatory Reform (Fire Safety) Order (FSO) applies and Section 3 – Risk-based guidance about the discharge of duties under the FSO of the Act commenced on 16 May 2022.
 - [Fire Safety Act Commencement Prioritisation Advice](#)
 - [Information on commencement of Section 1 and 3 of the Fire Safety Act](#)
 - [Fire Risk Assessment Prioritisation Tool](#)

Key publications from CABE

Setting the Bar – a blueprint to improve competence for those working on higher risk buildings and drive culture change has been set out by a cross-industry group representing more than 150 organisations, including CABE, in the fire and built environment industries. [Access *Setting the Bar* – Final Report](#)

Also: [Access *Safer people, safer homes: Building Safety Management*](#)

[Access the Chartered Association of Building Engineers for further information.](#) and [Access *Building Engineer* website](#)

6) RICS – Royal Institution of Chartered Surveyors

- RICS recognise the huge importance of property, land, construction and the built environment. Through their market surveys and research, they aim to advance the thinking of the profession and raise the profile of the industry.

Note: Latest research published by RICS is covered earlier within *Knowledge Foundations* and under **Other News > RICS Market Surveys**.

[Back to top](#)

As of **February 2025**, the [latest news & insights](#) include:

- **News, Insights & Opinion –**
 - [Justin Sullivan becomes RICS President for 2025](#) (01/25)
 - [Rates Ease, Keys, Please: UK Housing Market shows promise moving into Q4](#) (09/24)
 - [Building Safety Act FAQs](#) and [Information](#) (07/24)
- **Digital Transformation / Tech Partner Programme –**
 - [The role of Digital Twin Technology in Construction and Building Operations](#) (12/24),
 - [Flood Risk Impact on UK Commercial Properties, &](#)
- **Urbanisation –**
 - [The planet of cities: peak population and urbanisation in the next 100 years](#) (11/24)
- **Fire Safety –**
 - [Cladding External Wall System \(EWS\) FAQs](#) (3/25),
 - [RICS Fire Safety Hub](#) – read the latest guidance and development from RICS in the area of fire safety,
- **Also: [The future of BIM](#)** – An overview of what BIM is and how it is evolving.

7) CIOB – Chartered Institute of Building

The quality of the built environment effects every member of society. As a professional body that represents the leaders and managers who work at every stage of the lifecycle of a construction project, The CIOB seek to influence government, industry and other stakeholders around the world with the aim of promoting the construction management discipline and addressing the challenges that the sector faces.

As of **February 2025**, the latest CIOB Policy and [Research](#) incl.

Future of Construction

- **Latest Research: The SME Construction Landscape in Wales / Risk Factor Analysis** – This new research from CIOB focuses on the unique issues and risks faced by construction SMEs in Wales.(10/24)
- *CIOB Artificial Intelligence (AI) Playbook 2024* (06/24)
- *Building Opportunity: Employing People with Criminal Convictions in Construction* (03/24)
- *Modern Methods of Construction: barriers and benefits for Irish housing* (01/24)

Quality

- Research: New-build housing – how regulation can improve the consumer journal (12/23)

Economic and Social Impact

- Research: *Balancing the tax system with climate goals* (10/23)

Ethics research

- *Understanding Mental Health in the Built Environment; and The State of Well-being in the Construction Industry.*

[Access the Chartered Institute of Building's Policy and Research website](#)

[Back to top](#)

8) House of Commons Library, 9) the House of Lords Library and 10) the Parliamentary Office of Science and Technology (POST)

About the House of Commons Library - The House of Commons Library is a research and information service based in the UK Parliament. Their impartial analysis, statistical research and resources help MPs, and their staff scrutinise legislation, develop policy, and support constituents.

Watch this quick video to find out how the House of Commons Library works

Source: UK Parliament (2020) 'How the House of Commons Library works', YouTube [video]. Available at: youtube.com.

As of November 2022, the House of Commons Library updated their website that is now broken down into the following sections or subject areas:

Services that include **Research**, Resources, Training & Events,

Brexit and UK-EU relations – Research covering key Brexit moments negotiations the EU and its institutions and UK-EU relations after Brexit.

Coronavirus – Research relating to Covid-19 from the Commons Library and other parliamentary research services.

Economy, Business and Transport – Research on the economy, business transport and work and incomes. Also includes Economic Indicators and monthly economics updates.

Home Affairs incl. Research on communities, crime, family & civil law, justice, immigration, security, and culture, media & sport,

Parliament & Elections that include devolution, elections, government, parliament, and local government,

Science, Environment and Technology that include **Energy, Environment, Climate Change, Sciences, Local Data**

Social Policy that include **Education, Families & Social Services, Health, Housing & Planning, and Welfare & Pensions,**

World Affairs that is broken down into Africa, Americas, Asia Pacific, Defence, Europe, Institutions, and Middle East, and more.

As of **February 2025**, the latest House of Commons Library, **Research publications** incl.

1. **Higher education finances and funding in England,**
2. Research for Commons business,
3. Public Authorities (Fraud, Error and Recovery) Bill 2024-25, and
4. Local area data: fuel poverty.

Review House of Commons Library, Research for this week

As of **February 2025** the latest **House of Commons Research:**

[Back to top](#)

Under '**Education**' and within 'Social policy,' the top research briefings incl.

1. **Degree apprenticeships** – This briefing explains what degree apprenticeships are, how they are regulated and funded, and how many people start one.

Also:

2. **Finding funding for a master's degrees,**
3. **SEND dashboard** – Special education needs and disabilities in England,
4. **Financial support for higher education students,**
5. **The review of level 3 qualifications reforms,**
6. **Technical education in England: T Levels,** and
7. **Higher education around the world: comparing international approaches and performance in the UK** – This briefing compares how higher education works around the world with the UK. It considers systems, student numbers, funding, access and participation, and research.

Under '**Housing and Planning**' and within 'Social policy,' the top research briefings incl.

1. Housing market: Economic Indicators,
2. Debate on housing targets in rural areas,
3. New Homes (Solar Generation) Bill 2024-25,
4. Renters' Rights Bill 2024-25: Progress of the bill,
5. Social housing tenants and antisocial behaviour,
6. Local authority data: housing supply,
7. Stamp Duty Land Tax: Current situation and development since 2020,

Under '**Energy,**' '**Environment**' and '**Climate change,**' and within 'Science, Environment and Technology' include:

1. Local area data: fuel poverty,
2. The Climate and Nature Bill 2024-25,
3. Crown Estate Bill [HL] 2024-25, and
4. Water (Special Measures) Bill 2024 – 2025.

House of Commons Library search on '**construction industry**' identifies 18 key documents, that incl. 'Taxation in the construction industry', 'CITB – Construction Industry Training Board Levy', and '**The construction industry: statistics and policy, Dec. 2019**' -

Abstract: Construction industry – employment, new orders, output. **Construction 2025, The Farmer Review** and the **Construction Sector Deal** (part of the government's **Industrial Strategy**).

Key statistics – In 2018, the construction industry contributed £117 billion to the UK economy, 6% of the total.

Economic output in 2018 was slightly down on 2017, the first fall since 2013.

There are 2.4 million construction industry jobs in the UK in Q2 2019, 6.6% of all jobs. There are more construction jobs now than at any time since 2007, although throughout this period, roughly the same proportion of jobs have been in construction.

The construction industry is unusual because of the high proportion of self-employment in the sector – 36% in Q2 2019, compared to the average for the whole economy of 13%.

New orders to the construction industry were worth £61.7 billion in 2017. This is 13% down in 2017, the first fall since 2011. New housing orders accounted for 35% of all construction orders, commercial orders accounted for 25% and infrastructure orders accounted for 19%.

[Access and download the full report, 'Construction industry: statistics and policy'](#)

[Back to top](#)



e-Journal Review

Built Environment Industry Journal titles reviewed by UCEM e-Library

MODUS

MODUS - the RICS magazine that brings you the latest news and views, expert advice and in-depth features spanning the breadth of the surveying profession around the world.

In the latest digital MODUS (**February 2024**),

'The Phoenix: affordable rents, shared spaces and no cars' – On a former industrial estate in the south of England, an ambitious new housing project is aiming to set new standards in low carbon living.

Subject Terms/Keywords: Cities and placemaking; Housing; Project management; Quantity surveying and construction; Residential; and Wellbeing.

Latest articles within *Modus*:

'Towards a new generation of skills professionals' – The real estate, construction and rural sectors face a critical skills gap, exacerbated by an ageing workforce and limited awareness of career opportunities.

Subject Terms/Keywords: Project management; Quantity surveying and construction; and Residential.

'Return to the office or head for the door?' – The pandemic made working from home a sensible default but getting employees back to the office has proved a challenge. Why does management want workers to return – and what's in it for them?

[Back to top](#)

Also:

- **From runway to work, rest and play – reimagining Singapore’s airport** – Singapore is running out of land. Could the redevelopment of an old air base not only provide crucial new homes and commercial spaces, but reset the culture of the city state?

- **Taking in the sea air: why pleasure piers prevailed** – Many Victorian-era UK piers are still standing strong and remain viable commercial assets, even though leisure habits have changed enormously in the past 150 years.

- **How Grimsby is winning the regeneration games** – Decades of economic decline are now being reversed in the coastal town, with an ambitious programme of investment in the built environment alongside community events.

The most shared articles on Modus this year. – Profiles of chartered surveyors with fascinating jobs were a big hit this year (2024), highlighting the wide of career paths out there for those entering the profession.

Subject Terms/Keywords: Building surveying; Cities and placemaking; Facilities management; Housing; Projects and people; and Valuation.

What were the most-read Modus articles of 2024? – As another eventful year in the built environment draws to a close, *Modus* brings a roundup of the most popular features RICS published in the last 12 months.

- This year *Modus* has covered topics spanning the built and natural environment, ranging from staircase design to spaceport construction and even surveying shipwrecks.

1. How much are you paid – and should you get more?
2. Sphere, Las Vegas: how green is that screen?,
3. Building Everton’s new stadium: ‘the people’s project’,
4. Boring tunnels: the Las Vegas loop,
5. How Luton Town revamped its stadium in just three months,
6. Could filling empty homes solve the housing crisis?,
7. Stephen Radford MRICS: the pub surveyor,
8. Why AssocRICS paves the way for a career in surveying,
9. Could 3D printed houses transform the built environment?, and
10. Preserving a national treasure: the Royal Albert Hall.

And as a comparison ...

What were the most popular stories of 2023 on Modus? – Topics related to climate change and architecture have it into our top 10 most-read articles in 2023.

[Back to top](#)

The Top ten most read articles include the following:

11. Which real estate sector pays the most?,
12. Future-proof: retrofitting commercial property,
13. Brutal or beautiful? The Barbican Estate,
14. Alexandra Revell MRICS: renovating the Royal Albert Hall,
15. At your convenience: the importance of good toilets,
16. From soldier to surveyor,
17. Alan Bainbridge FRICS: transforming the BBC's estate,
18. Buildings that elevated cities: The Shard, London,
19. What are the most important features of office design?, and
20. How to ensure biodiversity net gain in developments.

Subject Terms/Keywords: Commercial property; Commercial valuation; Corporate real estate; Economics; Residential; and Sustainability,

and more.

Please note: In addition to *MODUS*, RICS publishes other journals that are free to view online incl.

1. **[Construction Journal](#)** - The journal helps **quantity surveyors** and project managers with the technical and professional aspects of their day jobs and keep up to date with developments and practical matters in the profession. It covers topics including contracts, cost management, procurement, construction law and regulations, communications, and project management skills.
2. **[Built Environment Journal](#)** (Incl. Building Surveying, Building Conservation, and Building Control) - Coverage keeps practitioners in the disciplines of building surveying, building control, and building conservation up to date on the latest developments, products, standards, and guidance.
3. **[Land Journal](#)** - The journal emphasises the crossovers in these practice areas and their global nature, with articles contributed by experts from all over the ..
4. **[Property Journal](#)** - The journal contains high-quality technical material in clearly defined sections, as well as some material that crosses professional groups to reach a wider audience.

Further information can be accessed via the RICS Website, Home > **[News & Insights](#)** > **[RICS Publications](#)** [online].

The Heritage Alliance's (HA) **[Heritage Update](#)**, the latest edition, **January 2025 - Issue 535** focusing on – Heritage Day 2024 Tickets Launched; Listed Places of Worship Grant Scheme Extended for 1 Year With New Cap; Culture Secretary Announces £60 Million for Creative Industries; and UK Soft Power Council Launches.

Also: **Engaging Digital Audiences**, available on the **[HA project portal](#)** - access webinars on diversifying digital audiences, how to plan great webinars, how to use exceptions to copyright in

[Back to top](#)

your digital activities & how to encourage your audience to create user-generated content.

Institute of Workplace and Facilities Management (IWFM)

Facilitate, - This latest **January/February 2025** edition of *Facilitate* focuses on 'The compliance conundrum.' It's such a good headline that you're likely to have seen it many times in the past to headline an article about this biggest of facilities management challenges. Read more related articles on the [IWFM Insight webpage](#).

Construction Management (CM) and **Global Construction Review** (GCR) are magazines of the Chartered Institute of Building (CIOB). **Note:** Latest articles from both journals are covered earlier within this issue of *Knowledge Foundations*.

Subscriptions available via the VLE e-Library include:

Construction Information Service (CIS) Insight 2024. The Latest Edition [**February 2025**] focuses on – NBS Article 09/2024, **Sustainable Futures UK Report 2024**, and covers: ▪ Insights from industry professionals' perspectives, ▪ Sustainable outcomes and the barriers we face, and ▪ The future of sustainability policy and the role of specification and project information.

- The *Sustainable Futures UK Report 2024* results from a comprehensive survey conducted by NBS in association with the Sustainable Energy Association and supported by organisations such as Glenigan and RIBA.

Taylor and Francis Online and include the following e-Journals:

- *Construction Management and Economics*,
- *Building Research and Information*, and
- *Journal of Property Research*

Henry Stewart Publications and include the following e-Journals:

- *Building Survey, Appraisal and Valuation*,
- *Journal of Urban Regeneration & Renewal*, and
- ***Corporate Real Estate***.

Corporate Real Estate Journal is the essential peer-reviewed, professional journal for corporate real estate executives.

Each quarterly 100-page issue publishes high quality articles and real case studies on new thinking, strategies, and techniques in corporate real estate. It cuts through the deluge of information facing corporate real estate professionals to deliver content, which is authoritative, practical, and relevant by providing a blend of genuine thought-leadership – which expands what can be achieved with corporate real estate – with detailed, actionable advice and 'lessons learned' from industry peers.

In-depth articles and case studies scheduled for the new volume of *Corporate Real Estate Journal* are provided overleaf.

[Back to top](#)

In-depth articles and case studies scheduled for the new volume, **Vol 14, Number 2 (2024-2025)** of **Corporate Real Estate Journal** incl.

Vol 14, Number 2 (2024-2025)**Case Study**

1. A blueprint for great workplaces: Integrating brand identity, regional diversity and inclusive design.

Practice Papers

1. Transforming hybrid office management with an overarching dynamic delivery model.
2. Market research for a volatile industrial sector: Actionable methods for occupiers.
3. Unifying real estate facilities data in a single repository to improve data quality and drive more informed decisions.
4. ESG and CRE? Impact of ESG on commercially leased real estate and considerations for landlords and tenants.
5. US manufacturing resurgence: How site selectors can unlock the potential of US locations.
6. Making hybrid work through an agile portfolio approach.
7. How can decarbonisation planning for existing a large offices create value and co-benefits for corporate occupiers and owners?

Vol 14, Number 1 (2024-2025)**Case Study**

1. Creating dynamic environments for the hybrid work experience: A case study of repositioning the Cambridge Consultants Boston office.

Practice Papers

1. More than one way to peel an orange: A fresh approach to building an effective lease administration function.
2. Piloting: Adopting a prototype mindset for today's workplace.
3. How AI and ML can help reduce energy usage and carbon emissions in buildings.
4. Data synergy in integrated facilities management: The key to clearer insights, smarter decision and optimised operation.
5. Agile technology planning: Embracing change to improve the hybrid workplace experience.

Vol 13, Number 3 (2023-2024)**Example practice papers include:**

1. Reshaping the corporate landscape: Navigating changes in real estate strategies.
2. Integrating cyber into new construction and commissioning across asset classes.
3. Best practices for supplier debriefs.

[Back to top](#)

Vol 13, Number 3 (2023-2024) continued.

Case Studies

1. Funding and implementing a lease compliance programme.
2. Tripple bottom line, environmental, social and governance and net zero in commercial real estate.
3. The Colorado State Government 'Reduce Our Footprint' initiative.

Also:

Vol 13 (2023-24) of [*Corporate Real Estate Journal*](#)

Vol 12 (2022-23) of [*Corporate Real Estate Journal*](#)

Vol 11 (2021-22) of [*Corporate Real Estate Journal*](#)

Vol 10 (2020-21) of [*Corporate Real Estate Journal*](#)

Vol 10 (1) (2020-21) Special issue: COVID-19, CRE and workplace response

Vol 9 (2019-20) of [*Corporate Real Estate Journal*](#)

HSTalks

© Henry Stewart Talks Ltd 2022

HSTalks is a member of the Henry Stewart Group which has been a leader in providing graduate and continuing professional education in science, business, and management for over 40 years through peer reviewed vocational journals (such as the *Corporate Real Estate Journal*), conferences and online education for medical schools, business schools, universities, government, and commercial enterprises in over sixty countries around the world.

Henry Stewart Talks Ltd (HSTalks) provides specially prepared, animated, online, audio-visual lectures, seminar-style talks and case studies that accompany the 'Business & Management Collection' of e-Journals that the UCEM e-Library subscribes to.

Educational Journal titles and Open Educational Resources (OERs) reviewed by UCEM e-Library

[*Open Praxis*](#) – peer-reviewed open access scholarly journal focusing on research and innovation in open, distance and flexible education. It is published by the [International Council for Open and Distance Education – ICDE](#).



This work is licensed under a [Creative Commons Attribution 3.0 Unported License \(CC BY 3.0\)](#).

[Back to top](#)

This latest *Open Praxis* special issue **Vol 16(4)** includes nine research papers, two innovate practice articles and one book review.

Keywords: open education, distance education, e-learning, online education, quality, internationalisation, autonomy, personality traits, scale, textbook, engagement, accessibility, inclusion.

Editorial: Introduction to *Open Praxis Vol 16(4)*

'The Manifesto for Teaching and Learning in a Time of Generative AI: A Critical Collective Stance to Better Navigate the future'.

Research articles include:

1. 'Renewable Assignments: Comparing Faculty and Student Perceptions'.
2. 'Understanding Innovation Vectors in the Use of Open Educational Resources'.
3. 'Self-Efficacy in Distances Education: A Framework to Measure its Academic, Learning, and Social Dimension',
4. 'The Role of Open Education and Faculty Gender in Shaping Student Perceptions',
5. 'Online Assessment and Artificial Intelligence: Beyond the False Dilemma of Heaven or Hell',
6. 'Understanding the Application of AI in Higher Education Systems: Global Perspectives From a Local AI Ecosystem.

Innovative practice articles

1. 'Global Understanding of Smart Education in the Context of Digital Transformation'.
2. 'Enhancing Inclusion, Diversity, Equity and Accessibility (IDEA) in Open Textbook Publishing: The Development of a Guide'.

Book review(s):

1. 'Book Review of *Active Learning Online: Five Principles that Make Online Learning Come Alive* - by Intelicato, J.

Source: Kosslyn, S. M. (2021). *Active learning online: Five principles that make online courses come alive*. Alinea Knowledge LLC. ISBN 978-1-7358107-0-6.

<https://openpraxis.org/articles/10.55982/openpraxis.16.4.628>

Keywords: Active learning, synchronous learning, asynchronous learning, online learning, science of learning.

European Journal of Open, Distance and E-Learning

(EURODL), an electronic, multi-media, open access journal. It publishes the accounts of research and presents scholarly work and solid information about open, distance, online and e-learning in technology-enhanced education and training in its most inclusive definition.

Published in the **Latest Issue of EURODL, Vol. 26 (2024): Issue S1 (August 2024)**, article titles include:

- 'Special Issue: The Integration of Generative AI in Teaching and Learning', and
- 'AI as a reflective coach in graduate ESL practicum: activity theory insights into student-teacher development.

[Back to top](#)

Also, in EURODL – Articles by UCEM staff, incl.

- 'Transcript and Accessibility: Student Views from Using Webinars in Built Environment Education,' Vol 23(2), and
- 'Massive Open Online Courses and Economic Sustainability,' by Liyanagunawardena, T.R. [et al.] UCEM, Vol 18(2). Also,
- 'Open Badges: A Systematic Review of Peer-Reviewed Published Literature (2011 – 2015)', by Liyanagunawardena, T. R., Scalzavara, S [et al.], UCEM, Vol 20(2)

Online Learning Journal (OLJ), the official journal of the Online Learning Consortium (OLC)

The **Online Learning Consortium's** premier journal dedicated to the development and dissemination of new knowledge at the intersection of pedagogy, emerging technology, policy, and practice in online environments. **Note:** OLJ is indexed in the **Web of Science** (ESCI) with a **Journal Citation Indicator** of 1.32, and **Scopus** citescore of 5.7 for 2021, ranking it in the 93rd percentile of all journals in **Education**. OLJ is ranked among the top 3% of all open-access journals in the field of Education.

The OLC **Online Learning Journal**, latest edition,

OLJ 2024, Vol 28(4)

Published: 2024-12-01

Special Conference Issue: AERA Online Teaching and Learning SIG

Editorial - Introduction to OLJ Volume 28(4).

- Introduction to the Special Issue: Highlighting AERA's Online Teaching and Learning SIG 2024.

Example papers include:

1. The impact of social media and gamification of a mobile vocabulary learning app: Self-regulation and learning persistence.
2. The Impact of Different Instructor Participation Approaches in Asynchronous Online Discussions on Student Performance.
3. Learning Online vs. Learning in Person: A Mixed-Methods Approach to Understanding How Student Preferences and Perceptions have Evolved Since the Pandemic
4. Exploring the Relationships of Learners and Instructors in Online Courses.
5. Envisioning Hopeful Futures: Designing Racially Just Online Learning
6. Empowering Learning Networks: Insights from Social Network Analysis in Inquiry-Based Discussions

Section II:

Introduction to OLJ Volume 28(4) Section 11

Section II:

7. An Agile Approach to Collaborative Online International Learning: A Case Study of Virtual Indigenous Food Sovereignty and Public Policy Internships in Aotearoa New Zealand and Ontario, Canada.
8. Supporting Tenure-Seeking Faculty in Online Programs: A Critical Discourse Analysis.
9. Exploring the Relationships of Learners and Instructors in Online Courses.
10. An Exploratory Study of Low-Income Minority Students Online Learning Experience.

[ISSN: 2472 – 5730]

Higher Education Pedagogies, an Open Access Journal.

Henry Stewart Publications, Management e-Journal collection incl. *Journal of Education Advancement & Marketing*.

The Open Education Research Hub (OER Hub), and

The Directory of Open Access Journals (DOAJ)

[Back to top](#)



e-Book Review

Managing Diversity and Inclusion in the Real Estate Sector

Clack A and Gabler J (2019) *Managing diversity and inclusion in the real estate sector* [e-book], Oxon: Routledge. e-ISBN-13: 9780429428975

Managing diversity and inclusion in the real estate sector is the first to place D&I at the centre of successful real estate and construction organisations. It provides guidance to, and most importantly, actions for professionals in the sector who want to make D&I an inherent part of the culture of their organisation. This book has been written to bring the sector up to speed with what D&I is all about and how a D&I strategy can be implemented to secure future success.

Real Estate: The Basics

Forsyth, J. and Wilcox, J. (2022) *Real Estate: The Basics*, Oxon: Routledge. ISBN-13: 9780367725433

Real Estate: The Basics provides an easy-to-read introduction to the core concepts of the industry to students new to the subject or professionals changing direction within the sector. The book encapsulates the key 'need to know' aspects of Real Estate including the 'language' of real estate; its value and contribution to countries' GDP; its primary purpose, whether as an asset or as a resource; valuation concepts; asset classes; basic concepts of land law, and of landlord and tenant law; the increased role and

[Back to top](#)

importance of sustainability and technology; and an overview of the wide range of professionals involved in the industry.

Studying at a Distance

Talbot C (2010) *Studying at a Distance* [e-book]. Maidenhead: Open University Press, e-ISBN-13: 9780335238057

This essential guide provides practical help and support for those who have not previously studied at a distance and is ideal for students returning to study after a break. It covers fundamental issues such as motivation, goal setting, time management and coping strategies. Additional coverage in this edition includes specific information on the use of new technologies in distance learning; detailed coverage of referencing, citation, and plagiarism; description of using mind maps and other techniques for planning and writing essays or reports; support for disabled students, particularly those with dyslexia; and a further resources section.

Adding some Tec-Variety: 100+ Activities for Motivating and Retaining Learners Online

Bonk C J, and Khoo E R (2014) *Adding some Tec-Variety: 100+ Activities for Motivating and Retaining Learners Online* [e-book]. CreateSpace Independent Publishing Platform, e-ISBN-13: 9781496162724. [Access the free online book Adding Some TEC-VARIETY](#). Please note: The authors have made an online version of this work available under a [Creative Commons Attribution-Non-Commercial-Share-Alike 3.0 Licence](#).

The Solo Librarian: A Practical Handbook

Roper, L. (2024) *The Solo Librarian: A Practical Handbook* [print book and eBook], Cambridge MA: Chandos [online]. Further information is available at: <https://shop.elsevier.com/books/the-solo-librarian/roper/978-0-443-15795-0> [accessed 7 January 2025]

Actively diversifying the content to increase its relevance to an international audience, this practical handbook provides a single point of reference with accompanying time-saving templates that can be easily adapted to help aid the daily activities and processes often faced by those working in information, knowledge, libraries and related disciplines.

Benchmarking Library, Information, and Education Services

Roper, L. (2023) 'Benchmarking the impact, quality, and value of an academic online e-Library', in Baker, D., Ellis, L., Williams, C. and Wragg, C. (eds) *Benchmarking Library, Information, And Education Services* [print book], Cambridge MA: Chandos

Directory of Open Access Books (DOAB)

The primary aim of DOAB is to increase discoverability of Open Access books.

[Access the Directory of Open Access Books \(DOAB\)](#)

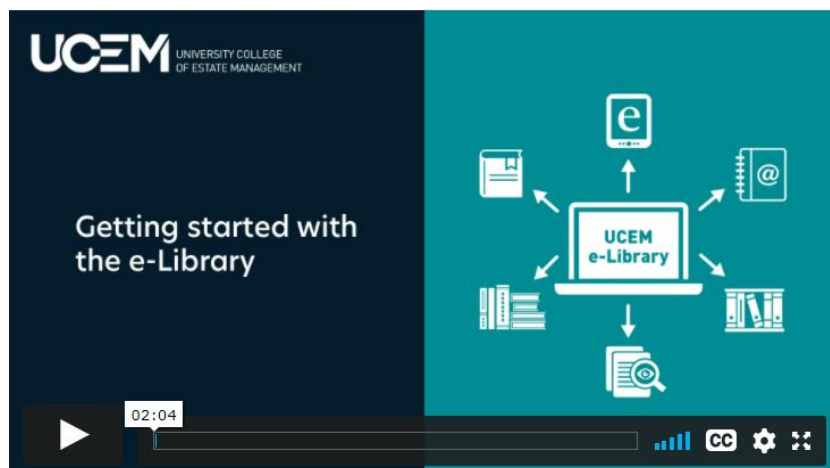
[Back to top](#)

UCEM e-Library Portrait

The aim of the e-Library

The aim of the e-Library is to:

- disseminate information, share good practices, and promote current awareness to assist in underpinning written work,
- add value and depth to our students' study experience, and
- support the continuing professional development of all those working and aspiring to work in the built environment.



© UCEM 2024

Source: UCEM (2023) *Getting started with the e-Library* [video], YouTube. Available at: www.youtube.com/watch?v=iEg8DFUFifY&t=5s [accessed 3 February 2025].

At UCEM, we recognise that in an information-rich age and when everyone is pressed for time, it can be a challenge to find good-quality information when you need it.

Whether you are obtaining a qualification, undertaking CPD or researching a particular field, having access to a well-equipped library is essential.

The UCEM e-Library (accessed through the Virtual Learning Environment - VLE) is a comprehensive and valuable online resource, enabling students to access a wealth of subject-specific and credible information to support them throughout their studies and career development.

What resources are available in the UCEM e-Library?

The e-Library is made up of eleven sections and provides students with around the clock access to online searchable databases from key industry and educational sources, thousands of journals, books, and resources, UCEM's entire collection of study materials and published work and UCEM's dissertation library.

[Back to top](#)

The sections that make up the UCEM e-Library:



© UCEM 2017

Resources available within the UCEM e-Library include Up-to-date information and online searchable databases from –

Key educational sources that include- Taylor and Francis Online, Ingenta Connect, Henry Stewart Publications and HS Talks, vLex | Justis, Westlaw EDGE UK, EBSCO Business Source Ultimate, Emerald Insight - access to around 2600 e-Book titles and their entire 'Property Management and the Built Environment' collection of journals, and

Industry-specific sources that include- IHS's Construction Information Service, *Estates Gazette* (EG) digital journal and EG Radius, *Property Week*, BCIS – Building Cost Information Service and RICS's ISURV online information service, NEC (New Engineering Contracts) Academia, BSRIA – Building Services Research and Information Association, and more.

Where to find help - Overwhelmed by the sheer amount of information out there?

Not only do libraries provide us with books to read, but they are valuable tools and resources. The UCEM e-Library is continually striving for improvement and changing to meet the demands of today's technology and ever-expanding volumes of knowledge creation.

The e-Library is here to help make finding up-to-date, credible, and relevant information easier. Access the [2023 e-Library interactive brochure](#) for further information.

[Back to top](#)

Supported by: Emerald Publishing Ltd
The work of the UCEM e-Library is endorsed
by Emerald Publishing Ltd



© Emerald Publishing 2021

Emerald Insight – the online platform for Emerald Publishing. Emerald champions new ideas in advancing the research and practice of business and management, and manages a portfolio of nearly three hundred journals, including a 'Property Management and the Built Environment' collection that UCEM subscribes to.



© Emerald Publishing 2021

Emerald works in close collaboration with numerous academic (including UCEM) and corporate organisations worldwide. Emerald Publishing endorses the e-Library's tailor-made research reports – a service provided to UCEM tutors to help supplement teaching and learning materials on subject-specific areas.

[February 2025] - Here are some Open Access Journal articles available via Emerald, all around the theme of

'Building Information Modeling' and 'BIM.'

Note: The following article examples are freely available via **Emerald Publishing Open Access:**

1. Theophilus O O O, Witt E and Irene L (2019) 'BIM for Construction Education: Initial Findings from a Literature Review', [10th Nordic Conference on Construction Economics and Organization](#), Leeds: Emerald Publishing Ltd [online]. Available at: <https://doi.org/10.1108/S2516-28532019000002047> [accessed 3 February 2025]
2. Ullah K, Irene L and Emlyn W (2019) 'An Overview of BIM Adoption in the Construction Industry: Benefits and Barriers', [10th Nordic Conference on Construction Economics and Organization](#), Leeds: Emerald Publishing Ltd [online], pp297-303. Available at: <https://doi.org/10.1108/S2516-28532019000002052> [accessed 3 February 2025]

Note: BIM+ Case Studies within *Knowledge Foundations*.



© UCEM 2021

Remember: “A Librarian is a powerful search engine with a heart, that listens and understands the library and information requirements of others and provides a response in a format that suits their needs” says Lucy Roper, UCEM Information Governance Manager and who can be contacted on the library@ucem.ac.uk email address

[Back to top](#)



Student Career Services

UCEM Career Service

UCEM Career Services offer careers Information, Advice and Guidance (IAG) to potential, current and past students. The service is confidential, non-judgmental, and impartial. [Access and read the UCEM Careers interactive brochure](#) and [Access UCEM Career Services](#)

LATEST: UCEM Careers Week 2025

- The UCEM annual Careers Event is here soon (3rd to 7th March 2025) with a week of live speakers and workshops on topics from business and finance strategy to networking and managing your social media professionally.



Sessions include the following:

- Around the World in 5 days: International Student Podcast,
- How does the world see me: Professional Identity and Social Media,
- Connecting with the Future: Trends and Innovation,
- Navigating University and launching your career, and more.

Note: Places can be booked on Careers Connect from Monday 23 February 2025. To gain further information, visit the [UCEM Careers Service and VLE Careers Pages – Careers Week, Inform, Connect, Inspire](#), via the UCEM secure VLE.

Related link:

- [Build a better future with UCEM videos](#)

Building Better Property Professionals

Property Elite’s sole aim is to build better property professionals – supporting your career every step of the way, whether you are completing a RICS accredited degree course, your RICS Assessment of Professional Competence (APC) or simply seeking engaging Continuing Professional Development (CPD).

[Back to top](#)



© 2022 — Property Elite LLP

Property Elite provides training and CPD services for property professionals, including students, APC candidates and corporate clients. Their Hot Topic Highlight blog posts will arm you with the information on the hottest topics – ready to tackle an important client meeting or begin revising for your RICS APC final assessment.

This month [**February 2025**] the **Hot Topic Highlight/Blog – The Fall of ISG: How Did It Happen & What Could We Have Done (January 2025)**

In this week's blog, the author looks at the fall of ISG and what you need to know about this as a RICS APC candidate or Chartered Surveyor working in the construction sector.

Note: If you have been personally affected by recent events, remember that **LionHeart** are there to provide you and your family with support: www.lionheart.org.uk.

The article covers – Why is this relevant?, About the historical context and legacy of ISG ..., How did a seemingly successful business go bust?, 2023: A year of increasing administrations, What is the likely impact on the supply chain and SMEs?, The public interest and the role of surveyors, How could the profession have mitigated the risks?, Industry trends and shifts in contracting practices, Case studies of similar companies, and more.

Access further information, register for a webinar, and Hot Topic Highlight/Blog – [‘RICS Valuation – Global Standards’](#)

[Access the Property Elite blog](#)

Also – [RICS Property Journal Article on An A-Z of the Landlord & Tenant Act 1954 for APC](#).

RICS *Property Journal* – [An A-Z of Inclusive Environments](#).

- Ensuring an accessible built environment is as much an ethical obligation as a legal requirement.

Estates Gazette – APC Series -

- o [RICS APC Pathways, & APC Lifeline 2024 Update](#)
- o [Rent Reviews and Calderbank Offers](#).

- [Property Elite Hot Topic Highlight blog: A-Z of Investment Terms](#), and [Access Property Elite's 'Building Better Property Professionals', Latest Blogs](#)

[Back to top](#)

Note: The author of most of these blogs, Jen Lemen-Hogarth is an Associate Tutor – UCEM and Partner – Property Elite.

Lucy's Top Tips – If you are planning to sit your RICS APC/AssocRICS, make sure you are aware of Property Elite's APC Support services, including submission reviews, question packs, revision quizzes and e-mock interviews (available via the e-Library). You can also download this blog [in audio format](#) and listen whilst on the move. When you're done, you can request further information and a free CPD certificate.

Other related web-links



© EGI 2023

Note: *Estates Gazette* regularly publishes a yearly supplement to support EG including a yearly special issue entitled '**Starting out in Real Estate**'.

This publication highlights the many varied and interesting career opportunities in real estate and has a number of contributions from UCEM. It's an interesting and informative read, covering areas such as:

- **What is Real Estate?** The asset classes, sectors and careers in the industry explained
- **A Day In The Life** – EG ask 19 professionals about their roles and skill sets
- **In Conversation with..** For example, Crown Estate CEO on how young people can change the world for the better, &
- **All About Apprenticeships** – How a degree apprenticeship works and why one could be right for you.

GoConstruct.org website highlights the many career opportunities available in construction & the built environment.

TARGETjobs (incl. **Construction and Property**) include graduate career guides and directories available for you to view online and download for future reference covering: **Explore Property**, **Explore Engineering**, and **Careers Survival Pack**.

House Building Careers – Part of Home Builders Federation (HBF), here you will be able to learn about the home building industry and how it benefits you, your community, and the country as a whole.

Access to: RICS Careers – What is surveying? See how surveyors shape our communities and tackle global issues like climate change – and discover how you can improve the world around you.

[Back to top](#)

Building People

Enabling connections for a competent, diverse, and valued built environment workforce



© UCEM 2021

The aim of 'Building People' was to create a technology platform and collaborative network, which enables connections and seeks to reduce the skills shortages across the Built Environment. 'Building People,' a social enterprise that aims to connect people traditionally not involved in the Built Environment sector with employers seeking to plug the skills gap via an online platform.

People Wiki:

What are you looking for?

<p>Search Organisations</p> <p>See what help is available to find work, learning and/or support.</p> <p>LEARN MORE</p>	<p>Find Information</p> <p>Our partnership with Designing Building Wiki brings together industry-wide content in one place.</p> <p>LEARN MORE</p>	<p>Ask A Person</p> <p>Contact people to gain industry knowledge, experience and guidance.</p> <p>LEARN MORE</p>
<p>Learning & Events</p> <p>Find courses, training and events relevant to you.</p> <p>LEARN MORE</p>	<p>Work Opportunities</p> <p>Employers opportunities in one place making it easy to find what you're looking for.</p> <p>LEARN MORE</p>	<p>Resources</p> <p>Easily access sector-specific material, brought together all in one place.</p> <p>LEARN MORE</p>

© Building People 2021

The UK needs to build, but there is a shortage of competent and experienced workers, and the workforce we have lacks diversity. Building People joins the dots to help people find employers, opportunities, and resources, and to help employers engage with a more diverse range of talent.

People Wiki (a free, open access knowledge sharing platform for diversity and inclusion, skills and careers, and social value.) is a crucial part of Building People's ambition to create a single platform that brings together a multitude of previously fragmented information, knowledge, resources, opportunities, and needs focused on diversity and inclusion, skills and careers, and social value.

Related Link: UCEM incubated social enterprise, Building People, becomes a fully-fledged success story - It is an exciting time for Building People as it announces its three-year plan, which focuses on five key areas:

1. **Profile:** Positioning Building People as the go-to source for equality, diversity and inclusion best practice and activities, and through leadership in the built environment,
2. **Partnerships:** Delivering maximum joined-up impact through the growth and development of Building People's supply and demand networks,
3. **People:** Enabling equality of opportunity through the provision of a simpler and more supported user experience in a fragmented careers landscape,
4. **Policy:** Aligning with and supporting the achievement and enhancement of relevant national sector policy and activity, and
5. **Planning:** Establishing a secure future of Building People as a sector-backed movement for collaborative change across the built environment.

[Back to top](#)



UCEM Sustainability Hub

Sustainability supports UCEM vision and core purpose to provide truly accessible, relevant, and cost-effective education, enabling students to enhance careers, increase professionalism and contribute to a better sustainable built environment. **Note:** UCEM has a Sustainability Hub within the VLE e-Library where you will find interesting resources, news, articles, projects and publications which support and information 'future skills' for sustainability within the construction, surveying, and property industries.

LATEST: UCEM staff and students can now access the Supply Chain Sustainability School

SUPPLY CHAIN SUSTAINABILITY

SCHOL

Reproduced with permission

The Supply Chain Sustainability School represents a common approach to developing sustainability competence in the supply chain and is part of a continued commitment to lead the industry into a brighter, more sustainable future.



(**Note:** UCEM staff/students can freely register with their UCEM email address)

[Back to top](#)

UK sets 'most ambitious' climate target to cut emissions by 78% by 2035



[Image: courtesy Ed Hawkins]

(Climate stripes as shown in this image are sometimes referred to as warming stripes, or climate timelines and are data visualization graphics that use a series of coloured stripes chronologically ordered to visually portray long-term temperature trends.)

[Access further information and the *PBC Today* article, 'UK sets 'most ambitious' climate target to cut emissions by 78% by 2035', in full.](#)

Water Quality and work of The Rivers Trust

[Raw Sewage in our rivers](#) - A map showing an amazing representation of the extent of the sewage problem

Building Research Establishment (BRE) Sustainability

The BRE provides leading edge information and advice on all aspects of sustainable that include – Sustainable construction of buildings, Communities, Infrastructure, Sustainable organisations, Materials, products and services, Waste management, Energy management services, and Training and publications.

[Access BRE Sustainability](#): Practical guidance and support for delivering genuine sustainability benefits.

Building Cost Information Service (BCIS)

The BCIS has launched a free-to-access benchmark tool – [Built Environment Carbon Database \(BECD\)](#), for infrastructure carbon assessment in the UK construction industry.

The Routledge Sustainability Hub

The Routledge Sustainability Hub is an innovative Knowledge Centre for the global sustainability community, this Hub offers a wide range of resources for everyone – whether you are a teacher, a student, a professional or a citizen of the earth curious to discover more about the many facets of sustainability.

[Access the Routledge Sustainability Hub](#)

QSAND and the Sustainability Goals

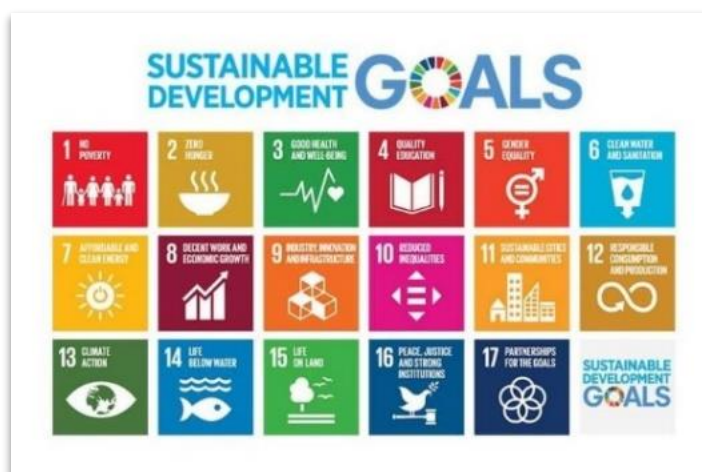
The UN Sustainable Development Agenda, adopted by world leaders in 2015, maps out a 15-year plan to fight inequality, end poverty and tackle climate change challenges. Quantifying Sustainability in the Aftermath of Natural Disasters (QSAND) is a self-assessment tool to promote sustainable approaches and contributing to aid the achievement of several of these 17 goals in disaster affected global communities:

[Back to top](#)

Libraries' contribution to SDGs

Agenda Vision: Universal literacy
Goal 3: Good health and wellbeing
Goal 4: Contribution to quality education
Goal 5: Culture
Goals 5, 9, 7: ICT skills and access
Goals 8 & 10: Decent work, economic growth, reducing inequality
Goal 16: Access to information

Note: Information plays a vital role in just about everything we do.



(UN.org 2022)

Source: Designing Buildings .co.uk Wiki* (2021) '[Forgetting the big picture when considering sustainability](#)' [online], last edited 19 January. Note: "The Sustainable Development Goals icons and colour wheel are free to use" (UN.org 2021)

* **Note: Use of Wikis as a reference site**

Wikipedia and use of other Wikis are increasingly being used by people in the academic community, as an easy source of information about anything and everything. However, citation of Wikipedia may not be considered acceptable, because Wikipedia is not a creditable source. It is important to note that whilst Wikipedia may be one of the Web's most popular reference sites, it is not classed as a credible resource because anyone can be a contributor to the website.

This can be avoided by following two simple rules:

- 1) Remember that an encyclopaedia (which includes Wikipedia and any other Wiki) can be a good starting point for research and not an ending point.
- 2) An encyclopaedia can be good for getting a general understanding of a subject before you extend your study of the subject further. But you then must consider the subject in more depth using books, journals articles and other appropriate and credible resources. What you find in these other sources of information will be more detailed, more precise, and more carefully reasoned than the summary you found in an encyclopaedia. The sources you reference/cite in your work will therefore be these more detailed sources you have used.

(Connors State College 2022)

[Back to top](#)

UCEM BE Sustainable articles

UCEM signs up to CIC's new 'carbon zero' climate action plan

UCEM is one of the institutions which has signed up to the Construction Industry Council's (CIC) new climate action plan.

CIC's Climate Change Panel, chaired by its deputy chairman, Stephen Hodder MBE, led on the initiative, with signatories to the plan agreeing that:



Carbon Zero: the professional institutions' climate action plan

The signatories to this Action Plan agree that:

- the actions listed are necessary for dealing with the challenge of climate change;
- they will implement those actions appropriate to them as an institution/organisation; and
- they will support the other signatory institutions and organisations in delivering the remaining actions

© CIC 2021

The document, entitled 'Carbon Zero: the professional institutions' climate action plan,' was released last week and coordinates the efforts of built environment institutions in meeting the UK government's 2050 net zero emissions target.

To read the plan, head to the [CIC news story – 'CIC launches a Carbon Zero climate action plan for Professional Institutions'](#).

[Access the article 'UCEM signs up to CIC's new 'carbon zero' climate action plan' in full.](#)

5 practical tips for saving energy costs

- The cost-of-living crisis has spread across the globe. Significant increases to the cost of food and energy have outstripped worker's salaries, and spiralling inflation has plunged countless into poverty. While the tenth day of COP27 focussed on the decarbonising our energy systems, UCEM looked at practical ways to save energy that can be actioned without spending too much money.

1. Avoid leaving appliances on standby - The average UK household spends around £65 a year on appliances that are left on standby. This is the energy consumed by an appliance when it is not in use and not switched off at the socket. You may not think about the devices that have low-level usage when not in use, such as broadband, smart speakers and telephones, but these are the ones that are usually turned on for 24 hours a day and the amount of electricity they consume adds up.. By remembering to switch off devices more often or buying a standby saver, you could be saving yourself electricity you didn't even know you were consuming.

[Back to top](#)

2. Draught-proofing windows and doors - Draught-proofing is one of the most affordable and effective ways to save energy costs. It allows you to keep the warm air in your home by blocking out unwanted gaps that let cold air in – ultimately requiring less energy to heat up your home. By draught-proofing your windows and doors, you could save around £60 a year in a semi-detached house. Similarly, you could also save around £90 a year by draught-proofing an open chimney when not in use. A lot of draught-proofing can be done through simple DIY tasks at home, or professional draught-proofing can cost a bit more but last you longer.

3. Use your thermostat effectively – A large portion of your heating bills are absorbed by heating and hot water costs. By doing something as simple as turning down your central heating by just one degree, you could be saving up to £80 a year. You could also invest in a smart thermometer, which will heat your home more efficiently by only warming the room in use. They can be controlled by your phone and adapt to how long it takes to warm a certain temperature, so it can be set at exactly the right time.

4. Monitor your water usage - Water waste is something we may not realise is happening in our homes, but they add up and result in a large amount of total energy and water use. A dropping tap can waste more than 5,300 litres of water a year, so it's important to keep an eye on even the smallest amounts of water waster in the homes. By spending one minute less in the shower each day, a family of four could save up to £75 a year on energy and water bills. Similarly, turning off a running tap while you brush your teeth or wash your face can save more than 6 litres of water a minute!

5. Invest in energy saving appliances, like an air fryer – While it's good to buy home appliances based on their energy ratings, it's also good to research alternative types of appliances you can buy. One big change you can make is switching to an air fryer for day-to-day cooking rather than using a gas or electric cooker. Research by Utilita showed that on average they run at £55.91 a year, as opposed to a gas cooker on £121.06 per year and electric cooker on £335.57 per year.

[Access the article '5 practical tips for saving energy costs', in full.](#)

Further 'Sustainability' information and articles:

UCEM's ambition – To be the world's most sustainable university [online]. Available at: www.ucem.ac.uk/sustainability/

Also: CIOB - [A Guide to Sustainability in the Built Environment](#), offering practical tools and strategies to help professionals embrace sustainable practices during the planning, construction and ongoing operation of a building. Note: This book is also available via the [UCEM e-Library](#).

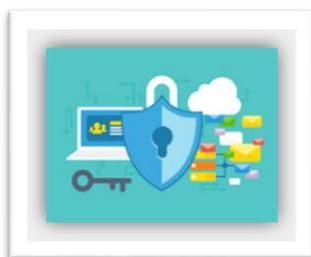
[Back to top](#)



Information Governance

UCEM is committed to advancing information governance and compliance, ensuring that the services provided comply with the General Data Protection Regulation (GDPR), Data Protection, Freedom of Information, Records management, Copyright, and Information Security.

Information Governance:



© 2020 iStockphoto LP, Royalty free image

To make sure that information is available in the right place and at the right time to support others, the e-Library ensures that the information services comply with data protection and copyright.

Data Protection

With new technologies constantly emerging and us finding ourselves moving further into an ever more digital direction, our personal data, how it is used and who has access to it becomes a growing and global concern for all.

The General Data Protection Regulation (GDPR) was the first legislative change in recent years to address these concerns, with a broad aim to invoke a cultural shift in the way organisations manage personal data.

Further information, advice, and guidance on Data protection, GDPR and more can be found at the Information Commissioner's Office (ICO), the UK's independent authority set up to uphold information rights in the public interest, promoting openness by public bodies and data privacy for individuals.

[Access the Information Commissioner's Office \(ICO\) website](#)

Latest Data Protection News [February 2025]

BBC News: Institutional abuse victims awarded £30,000 after data breach

- Three victims of historical institutional abuse (HIA) in Northern Ireland who were exposed in a **major data breach** are each to receive £30,000 in damages, the High Court heard on Wednesday 27th November 2024. The settlements were announced in claims against the body, which was set up to champion their cause, and The Executive Office. **Keywords** include – [Data Breaches](#).

[Access the BBC News article, \(2024\) 'Institutional abuse victims awarded £30,000 after data breach', 27 Nov., in full.](#)

[Back to top](#)

ICO Latest News [February 2025] -

New year, new you – 2025 is the year to tighten up your data privacy (01/25)

28 October 2024 – **Information Commissioner: Organisations need to do more to help people affected by data breaches.**

ICO reassures employers they can share staff data in a mental health emergency (03/24), and **Related Link: ICO Blog: Sharing personal data in an emergency – a guide for universities and colleges.** (09/21)

Also: UK Information Commissioner warns against 2024 becoming the year people lose trust in AI

ICO publishes guidance to ensure lawful monitoring in the workplace (10/23)

ICO urges organisations to harness the power of data safely by using privacy enhancing technologies (06/23)

Access the Information Commissioner’s Office, ‘News, blogs, and speeches’ section of their website

Further information, advice, and guidance (IAG) provided by the ICO

The ICO publish detailed IAG on:

- **Guidance on direct marketing and the public sector** (ICO, August 2021)
- **Sharing personal data with law enforcement authorities**,
- The **Accountability Framework**. (ICO, September 2020),
- **Codes of conduct** and **certification schemes**. (ICO, February 2020)
- When using data analytics on personal data, the ICO is urging all organisations to look at its toolkit. It can be found at **ICO > For Organisations > Toolkit for organisations considering using data analytics** (ICO, February 2021)
- **Freedom of Information Self-assessment toolkit** launched in 2020 helps identify gaps in compliance.
- Further updates have been made to **guidance for handling Subject Access Requests** including a **step-by-step guide for small businesses**
- **Building a controller-to-controller contract** + template contract with guidance

ICO What’s new? [February 2025]

The Information Commissioner’s Office (ICO) website has a ‘What’s new’ section to highlight and link to any changes in their **ICO Guide to Data Protection** as they occur, for example: The ICO have updated their guidance on **Regulation 13** (when personal information is exempt from disclosure under these access regimes when certain conditions are met. (12/23).

[Back to top](#)

The ICO have published:

Guidance on the [national security exemption](#) in Part 2 of the DPA18. (03/21)

Updated BCR communication following the EU-UK Trade and Co-operation Agreement to the [International transfers after the UK exit from the EU Implementation Period](#). (01/21)

[Data Sharing Code of Practice](#), alongside a [data sharing information hub](#) with further resources and support. (12/20)

Further guidance provided by the ICO.

[Read the Blog: 'Access to information: driving change through education, engagement and enforcement,' in full](#)

Copyright



© iStock (2021)

“It is important to remember that Copyright material in digital form is protected in exactly the same way as Copyright material in any other format. For example, text and images on a website are protected by copyright in the same way as printed material. Please note: if there is something you really want to use for learning materials and someone else owns the copyright ... [permission must be sought!](#)”

The copyright owner may wish to charge you, but often they just appreciate you asking them if they are happy for you to acknowledge their work and inform them of how the information will be used and to whom it will be circulated.”

Source: Salmon, Prof. G., (2013), *E-tivities*, London: Routledge

Introducing Copyright: A plain language guide to Copyright in the 21st Century - Computers and the Internet have transformed the way we produce and distribute information and entertainment. This book explains copyright protection and what it means for copyright holders and copyright users. It also introduces readers to contemporary topics: (i) digital rights management, (ii) open licences, (iii) software patents & (iv) copyright protection for works of traditional knowledge.

Source: Hofman J (2009) *Introducing Copyright: A plain language guide to Copyright in the 21st Century* [e-book], Vancouver: The Commonwealth of Learning.

 **creative commons** [CC-BY-NC-ND](#)

[Access free copies of this book \(in PDF and EPUB formats\)](#)

[Back to top](#)

The Copyright Licensing Agency Ltd (CLA)

The CLA are a licensing body as defined by the Copyright, Designs and Patents Act 1988 c.48 (as amended) ["CDPA"]

The CLA licence organisations to copy and re-use extracts from print and digital publications on behalf of copyright owners – authors, publishers, and visual artists. By 'copying' the CLA means photocopying, scanning and re-use of content from magazines, books, journals, electronic and online publications, as well as press cuttings or documents supplied by a licensed third party.

Having a CLA licence helps to reduce the risk and potential cost of copyright infringement. This requirement applies to any organisation in the business, education, public or charitable sectors. **Note:** UCEM holds a **CLA 'Higher Education Photocopying and Scanning Licence'**

[LATEST: Access the newly upgraded Copyright Licensing Agency \(CLA\) website for further information](#)

CLA Check Permissions tool

The **[CLA Check Permissions tool](#)** is an online search tool that lets you quickly find out what you can copy under your organisation's CLA licence. Whether you'd like to photocopy and distribute an article to colleagues or upload a report to an intranet or VLE, the CLA Title Search simplifies the steps required to ensure compliance.

[Check permission at CLA Higher Education Licence.](#)

[Introducing the CLA Step-by-Step Guide and Interactive Toolkit for those checking permissions within their licence.](#)

Latest Copyright News [**February 2025**]

How an AI-written book shows why the tech 'terrifies' creatives

- For Christmas I received an interesting gift from a friend – my very own "best-selling" book. "Tech-Splaining for Dummies" (great title) bears my name and my photo on its cover, and it has glowing reviews. Yet it was entirely written by AI, with a few simple prompts about me supplied by my friend.

[Access further information and the articles, 'How an AI written book shows why the tech 'terrifies' creatives', in full.](#)

[Also: New AI systems collide with copyright law, and What is artificial intelligence, and will it take jobs?](#)

[Latest 'BBC Copyright News' incl. Banksy Copyright case](#)

Government Guidance – Changes to copyright law from 1 January 2021

- This guidance covers the impacts on UK right holders, businesses, cultural heritage institutions and consumers. Note: It is not legal advice.

[Back to top](#)

[Access the GOV.UK 'Changes to copyright law from 1st January 2021', in full.](#)

Keeping abreast of the latest developments in Information Governance: [Copyright Resources](#) – Naomi Korn Associates has developed free and openly licensed copyright, licensing and data protection help resources.

Copyright & Information Technologies in Education (CITE)



© CLA 2020

The CITE Forum is a place to discuss the CLA's technology and licence offerings (such as the Digital Content Store) but also an opportunity for Higher Education Institute's to network, share and disseminate relevant copyright information.

As UCEM Information Governance Manager I regularly attend the Copyright Licensing Agency (CLA) CITE Forum and presented on '[UCEM's e-Library: Our Story So Far](#)', at the [CITE Winter 2021 Forum](#). Source: CLA (2021) [UCEM e-Library: Our story so far](#), a presentation given at the Winter 2021 CITE Forum [video], YouTube. Available at:

www.youtube.com/watch?v=GmuENzHeGO0&feature=youtu.be [accessed 27 January 2025]. Ref: From 58:05 until 1.28:41.

Further information - Copyright Licensing Agency, CITE

- '[CITE – 2020 Vision](#)', [CITE Magazine, Winter 2019, No. 3](#)
- '[A CITE to behold](#)', [CITE Magazine, Summer 2019, No. 2](#) &
- [CITE Magazine - A biannual magazine for the CITE Community, Winter 2018, No. 1](#).

UCEM is committed to advancing information governance and compliance, ensuring that the services we provide comply with **GDPR, Data Protection, Records Management, Copyright, and Information Security**. **LATEST:** In 2024 the UCEM e-Library, in collaboration with UCL, produced a short [Copyright Essentials e-learning course](#) (accessed via the UCEM secure Virtual Learning Environment). This e-learning will help staff and students better understand copyright and how to apply this understanding to studies, research and other activities.

Another part of my role as involves keeping abreast of the latest developments and benchmarking the work I do against that of others. I also undertake regular Continuing Professional Development (CPD), and an element of this is attending the CITE Forum attending events and conferences provided through my professional body, CILIP – The Library and Information Association, and others.

CILIP's National Copyright Conference 2024

This national and virtual conference was held on 23rd May and in

[Back to top](#)

association with Naomi Korn Associates, as well as great speakers and further experts in the field in attendance.

#CILIPCopy24 / #copyright

The Annual CILIP Online Copyright Conference is an ideal and unique opportunity for all librarians, archivists and information professionals to update their knowledge and professional practice in this crucial area. Additionally, it appealed to those who want to update their general copyright, licensing and publishing knowledge.

This year's conference theme is "**Copyright: New Horizons – Attack of the Bots.**" The programme explored different relationships, such as those between copyright and ethics, copyright and licensing, copyright and creators, AI and IP – and all shades in-between. Discussions considered how these sometimes symbiotic and sometimes more tension-driven relationships play out in the day-to-day, particularly within the contexts of libraries, universities and cultural heritage organisations. The conference programme covered the following:

- **AI, IP and ethics in the context of black heritage creators'**
- **The Practical Impact of AI on Academic Research,**
- **AI in the UK heritage sector,**
- **The Future of Copyright,** and
- **CLA Licensing and Technology Updates.**

Sessions covered broad copyright impact for the profession incl.

- **Keynote: AI, IP and ethics in the context of black heritage creators'**

Pawlet Brookes MBE, *Founder, DEO and Artistic Director, Serendipity Institute for Black Arts and Heritage*

- **Practical Impact of AI on Academic Research**

Matthew Lambert, *Head of Copyright, Policy and Assurance, British Library.*

We are in a time of flux. Since the arrival of ChatGPT at the end of 2022, AI development has moved forward in leaps and bounds, so fast that the regulations to govern it have yet to be written. In the meantime, all the stakeholders are implementing their own policies and processes to adapt. In this session, Matt will talk us through the changes and the onward impact they are having on the educational, academic and cultural heritage sectors.

- **AI in the UK heritage sector**

Dr Mathilde Pavis, *Legal Consultant, Pavis Consultancy*

Dr Mathilde Pavis discussed what Artificial Intelligence can do for the UK heritage sector and turns the question on its head to ask what the heritage sector can do for Artificial Intelligence.

The session looked at how Artificial Intelligence is used across the UK heritage sector today, and how organisations can take advantage of Artificial Intelligence to support their work. This

[Back to top](#)

presentation draws on case studies from organisations throughout the UK that have used AI technologies in three areas of work: heritage management, visitor experiences and day-to-day operations.

The discussion stresses that, as with any tool, the benefits of Artificial Intelligence can only be accessed if the risks associated with the technology are adequately managed. This means that heritage organisations should carefully plan what, how and when it is appropriate to use Artificial Intelligence, based on their priorities and resources.

Turning the question on its head, the session closes by highlighting an important, much less discussed fact: heritage institutions can play a critical role in AI innovation, as trusted knowledge organisations and the custodians of rich datasets. The heritage holds valuable assets in the form of skills, data, public trust, which are needed for AI innovation to serve the public interest.

- **The Future of Copyright**

Louis Coiffait-Gunn, CEO of CILIP

Louis Coiffait-Gunn, CILIP's new CEO and Naomi Korn will discuss the future of copyright, and both the challenges and opportunities AI might bring to rights-holders and users.

- **CLA Licensing & Technology Updates**

James Bennett, Head of Rightsholder Relations, Copyright Licensing Agency.

This session provided an update on the Copyright Licensing Agency's latest licensing initiatives, including developments around AI and text and data mining.

- **'Optimism or anxiety'? Co-creating a copyright literacy strategy for complex contemporary challenges**

Timothy Riley, Information Adviser (Copyright and Licensing), University of Aberdeen

Copyright has long been seen as challenging. Today, ever-evolving technology throws up new questions and dilemmas, even for seasoned copyright specialists. Is there any hope then for non-experts grappling with this complexity and uncertainty? How can university students and staff rise to the challenges and opportunities and engage with copyright issues in the university and beyond?

At the University of Aberdeen, we are meeting this challenge by rolling out an institutional copyright literacy strategy to empower our university community to create and reuse legally and ethically. Our aim is to enable all our staff and students to make informed,

[Back to top](#)

risk-aware decisions based on a sound understanding of the fundamentals of copyright law. They should also be able to think critically, question assumptions, and apply their understanding in new and unfamiliar situations. As well as being a key part of individuals' information and digital competency, this will support key areas of university activity, including teaching, research, and graduate skills and employability.

Find out how we drew on best practice from across the sector and engaged with our community to create a strategy that aligns with our members' needs and our university's wider strategic aims. We will look at the steps we took, and our progress so far in embedding the strategy and rolling out a copyright literacy initiative across our university.

- **How do we achieve success as Solo Librarians?**

Lucy Roper, Information Governance Manager, UCEM

Being a solo librarian or librarian in a small team with limited help can be daunting. Librarianship is multi-faceted, and while plenty of books cover library work in detail, few provide a single point of reference from the perspective of a solo librarian who must juggle multiple tasks at one time and deal with all aspects of library provision on their own.

AI is creeping increasingly into our lives, and libraries have undoubtedly witnessed a rapid transformation due to AI. As we strive for continual improvement, we must keep abreast of the latest developments and follow the ever-changing library landscapes and popularity of information systems and services, online library tools and technological advancements.

I, therefore, took it upon myself to write a practical handbook providing a one-stop-shop with accompanying time-saving templates (easily downloadable via the eBook version and companion website) that can be adapted to help aid the daily activities and processes (including the effective use of copyrighted material and undertaking yearly copyright reporting) often faced by those working in information, knowledge, libraries and related disciplines.

I follow the year in the life of a solo librarian, providing a yearly planner and timeline of activities, with supporting guidance to aid each step of the way. This guidance can then be applied, adapted and tailored to other working practices. In this lightning talk, I will share the foundations of the book, identify some of the lessons I have learned, and provide examples of the types of guidance available.

Further information is available at: CILIP (2024 '[CILIP Copyright Conference 2024 programme](#)'). CILIP.org.uk, Events.

[Back to top](#)

The Challenges of Remote Working

- The challenges of remote working and points to consider from a data privacy perspective. Provided within this article are points to consider from a data privacy perspective that include:

1. **Have a clear statement to all staff** stressing that “The protection of personal data that we hold, and use is important to us and must be always handled in a way that is compliant with data protection law and our Data Protection and Privacy policies. While we must adapt to comply with the official guidance, we will adjust our working processes to allow us to deliver our services. These are time limited instructions that will be kept under review. At the end of the period then all data that is held temporarily on personal devices as a direct result of this exceptional times, will be deleted.” (Tullo 2020)
2. **Set out what use of data**, contact lists, customer documents are being allowed.
3. As part of this exceptional response to homeworking **keep a full record of where staff are working from and what equipment they are using.**
4. **State that you have assessed the best way of ensuring homeworking efficiency** and are proposing that personal devices and mobile phones can be used. That you will review this [weekly seems sensible at present] in line with experience and how staff report it is working.
5. **Reissue and emphasize your usual security arrangements –** Virus and password protection, not leaving data visible to others, having a PIN code, or not sharing their device with others in their family or household.
6. **Take care to be aware where data is being stored**, even if temporary so that the security risk is managed and assessed.
7. For the **weekly reviews –** have your Senior Leadership Team note the number of staff using personal devices, any queries, or issues they are finding and demonstrate that you are monitoring the situation and are flexible in closing it down if any specific concerns arise.
8. Choose your **collaboration tool of choice** and consider recording online meetings and note actions especially where team members are geographically spread out and where broadband speeds and kit may vary in quality.
9. You might also consider having a **standard introduction for homeworking staff** to explain that they are homeworking and not in the office, so callers understand the position.
10. This is where a nominated **Data Protection Office (DPO)** or Data Officer can support the senior team in the messaging to colleagues.

There are growing numbers of tips and survival guides online that include: Information Commissioner’s Office (ICO) [Data protection and coronavirus: what you need to know](#). (Source overleaf).

[Back to top](#)

Source: Tullo C, OBE (2020) '[The Challenges of Remote Working at Present](#)'. © [Naomi Korn Associates](#), 2020. Some Rights Reserved. The text is licensed for use under the Creative Commons Attribution Share Alike Licence (CC BY SA).

Regarding UCEM we have followed these pointers:

(i) A clear statement went to staff, and UCEM has a designated area within their central SharePoint site for Business Continuity Planning (BCP) that has the following folders containing

- Official Communications [Internal and External]
- Human Resources (HR) guidance and support
- Information Technology (IT) technical support, guidance, and documents

Data Protection guidance (incl. a new guidance note entitled, 'Processing Personal data when remote working.'

- The [UCEM Data Protection and Privacy Policies](#) have been updated and should be read in conjunction with IT Policies).
- & Hints and tips for working from home.

(ii) A retention and destruction schedule is in place that collates lists of data used within respective teams and departments; (iii) A register is kept of where staff are working from and equipment used; (iv) Regular online meetings and weekly All-staff keep everyone updated and ensuring regular communication; (v) IT provide regular updates and guidance; (vi) GDPR 2020 training has been launched to re-enforce the importance of knowing how data is used and where it is being stored, even if temporary so that risk is managed and assessed; (vii and viii) online equipment and collaboration tools are well established at UCEM as an online education provider, but are regularly monitored; (ix) As mentioned above, hints and tips for working from home are provided, & (x) UCEM has a designated Data Protection Officer (DPO).

Please note: There are regular updates -

- (i) On the [UCEM Website](#),
- (ii) [VLE Help Page](#) (for students), and
- (iii) within the [UCEM Website Home > Supported Online Learning > e-Library](#) current awareness services, incl. Information blog and *Knowledge Foundations* (for all).

#BE Informed

(iv) A short [UCEM e-Library video](#) (used within UCEM Marketing, [Social Media business channels i.e. LinkedIn](#) to promote the e-Library, *Knowledge Foundations*, regular information blogs, and more)

“Perseverance will get you anywhere.”

@NASAPersevere / #NASAPersevere

A to Z of useful references and web-links:

A - B - C - D - E - F - G - H - I - J - K - L - M

N - O - P - Q - R - S - T - U - V - W - X - Y - Z

[Back to top](#)

A

Advance HE (Previously HEA – Higher Education Academy) is dedicated to helping higher education shape its future. Providing insight, enhancing organisational performance, developing, and connecting people, and accrediting achievements. Advance HE [online]. Further information is available at: www.advance-he.ac.uk [accessed 27 February 2025]

American Society of Civil Engineers (ASCE) Civil Engineering database provides free access to over eighty thousand abstracts taken from ASCE publications since 1973. ASCE [online]. Further information is available at: www.asce.org [accessed 27 February 2025]

Association of Researchers in Construction Management (ARCOM) brings together all those interested in construction management research. It aims to further the advancement of knowledge in all aspects of management in construction by support education, dissemination, and research. ARCOM [online]. Further information available at: www.arcom.ac.uk [accessed 27 February 2025]

ARCOM Abstracts database – contains open access of every ARCOM conference paper since 1997 and is now a major resource for all active researchers.

ARCOM Newsletters - contains the latest news from the industry.

AJ Buildings Library (AJBL) – The AJ Buildings Library highlights thousands of exemplar projects, most from the last 20 years but including major projects back to 1900. Available at: www.ajbuildingslibrary.co.uk/ [accessed 27 February 2025] (This valuable resource is just one part of the *Architects' Journal* subscription, available via the VLE e-Library > OpenAthens Library login > Construction Information Service (CIS) and/or EBSCO Business Source Ultimate).

[\[Back to A to Z\]](#)

B

Barbour ABI [online]. Explore the latest Construction Market Analysis Reports, for free. Further information available at: <https://barbour-abi.com/resources/reports/> [accessed 27 February 2025]

BBC Search and BBC Education [online]. Further information available at: www.bbc.co.uk/search and www.bbc.co.uk/news/education [accessed 27 February 2025]

BIDSTATS [online] – Free UK tenders' portal. Find UK public sector contracts and further information available at: <https://bidstats.uk/> [accessed 27 February 2025]

BIM Task Group – The Building Information Modelling (BIM) Task Group support and develop the objectives of the Government Construction Strategy and the requirement to strengthen the public sector's capability in BIM implementation [online]. **N.B.** This group and programme are now part of the University of Cambridge, **Centre for Digital Built Britain (CDBB)** [online]. Further information

is available at: www.cdcb.cam.ac.uk/AboutDBB/FAQs [accessed 27 February 2025]. Please refer to question 9 – What is the Digital Built Britain Programme? specifically.

BIMForum – The BIMForum’s mission is to facilitate and accelerate the adoption of building information modelling (BIM) in the AEC (Architecture, Engineering and Construction) industry. Further information is available via the BIMForum Website [online] and at: <http://bimforum.org> [accessed 27 February 2025]

BOMA International (Building Owners and Managers Association International) – a federation of 91 BOMA U.S. associations and seventeen international affiliates. Founded in 1907, BOMA’s mission is to advance a vibrant commercial real estate industry through advocacy, influence, and knowledge. **BOMA Research and Resources** [online] and available at: www.boma.org/BOMA/Research-Resources [accessed 27 February 2025]

British and Irish Legal Information Institute (BAILLI) Case Law Search [online]. Further information available at: www.bailii.org/form/search_cases.html [accessed 27 February 2025]

British Council of Shopping Centres (BCSC) was the professional body and authoritative voice for retail-led regeneration and for the management of and investment in shopping places [online]. Note: BCSC has changed and is now **REVO – Retail. Property. Community.**

British Property Federation (BPF) – The British Property Federation is a membership organisation devoted to representing the interests of all those involved in real estate ownership and investment. BPF [online]. Further information available at: <https://bpf.org.uk> [accessed 27 February 2025]

Building Conservation.com [online] – Information resources for conservation, restoration, and repairs. Further information is available at: www.buildingconservation.com accessed [accessed 27 February 2025]

Building Conservation.com Articles directory by subject [online]. Available at: www.buildingconservation.com/articles/articles.htm [accessed 27 February 2025]

Building Engineer [online] – Building Engineer website covers news and insights from the following topics: Building & Fire Safety; Business & Management; Construction & Building Materials; Energy & Sustainability; Health, Safety & Wellbeing; Policy & Regulations; Refurbishment; Technology & Digital Construction. Further information is available at: www.buildingengineer.org.uk/ [accessed 27 February 2025]

Building People - a technology platform and collaborative network, which enables connections and seeks to reduce the skills shortages across the Built Environment. Building People [online]. Further information is available at: www.buildingpeople.org.uk [accessed 27 February 2025]

Building Research Establishment (BRE) [online] is an independent and impartial, research-based consultancy, testing and training organisation, offering expertise in every aspect of the built environment and associated industries. Further information available at: <https://bregroup.com/about-us> [accessed 27 February 2025]

BRE A-Z of BRE Services (from Accreditation to Zero Carbon) [online]. Further information is available at: <https://bregroup.com/a-z/> [accessed 27 February 2025]

BRE Case Studies [online]. Further information is available at: <https://bregroup.com/expertise/case-studies/> [accessed 27 February 2025]

Building Services Research and Information Association (BSRIA) [online]. BSRIA is a test, instrumentation, research, and consultancy organisation, providing specialist services in construction and building services. Available at: www.bsria.co.uk [accessed 27 February 2025]

Building talk [online]. Available at: www.buildingtalk.com [accessed 27 February 2025] *Building Talk* is an email newsletter for Architects, Civil Engineers and Building Services Contractors.

Built Environment Carbon Database (BECD) is a free-to-use repository of whole-life carbon assessments of built assets and product LCA data. BECD [online]. Available at: <https://carbon.becd.co.uk/> [accessed 27 February 2025]

[Back to A to Z]

C

Campaign to Protect Rural England (CPRE) campaign for a beautiful and living countryside. They work to protect, promote, and enhance our towns and countryside to make them better places to live, work and enjoy, and to ensure the countryside is protected for now and future generations. CPRE [online]. Available at: www.cpre.org.uk [accessed 27 February 2025]

CPRE Resources provides the latest news articles, policy guidance notes, published reports and research surrounding the following - Countryside, Farming and food, Housing and planning, Energy and Waste, and Transport. CPRE Resources [online]. Available at: www.cpre.org.uk/resources [accessed 27 February 2025]

CBRE – With more than 100,000 professionals in over 100 countries, CBRE is the global leader in commercial real estate services and investment. CBRE [online]. Available at: www.cbre.co.uk [accessed 27 February 2025]

CBRE Insights and Research - CBRE sets the standard for global real estate research by providing clients with accurate and insightful market knowledge. CBRE [online]. Available at: www.cbre.co.uk/insights [accessed 27 February 2025]

Centre for Architecture and Built Environment Research (CABER) seeks to develop innovative approaches, procedures, technologies, and techniques that support the design, management, reconfiguration, maintenance and operation of buildings, their fabric, and the environments they create. Note: CABER incorporates the previous Centre for Construction and Property Research (CPRC). CABER [online] and available at: www1.uwe.ac.uk/et/research/caber.aspx [accessed 27 February 2025]

The Center for Construction Research and Training (CPWR) is dedicated to reducing occupational injuries, illnesses, and fatalities in the construction industry through research, training, and service programs. CPWR [online] and available at: www.cpwr.com [accessed 27 February 2025]

Centre for Digital Built Britain (CDBB) is a partnership between the Department of Business, Energy & Industrial Strategy, and the University of Cambridge to deliver a smart digital economy for infrastructure and construction for the future and transform the UK construction industry's approach to the way we plan, build, maintain, and use our social and economic infrastructure. CDBB [online]. Available at: www.cdbb.cam.ac.uk/AboutDBB [accessed 27 February 2025]

Centre for Sustainable Energy (CSE) is an independent national charity that shares our knowledge and experience to help people change the way they think and act on energy.

CSE Resources [online] include - Reports & publications, Toolkits, Advice leaflets, Websites, *Energise* newsletter, Videos on The fundamentals, Improving your community building, Community-wide energy saving projects, Neighbourhood and low carbon planning, Renewable energy projects, and further Resources for schools and educators. Available at: www.cse.org.uk/local-energy/resources [accessed 27 February 2025]

Chartered Association of Building Engineers (CABE) is a member-focused non-profit organisation. CABE shares knowledge, raises standards, and develops professionals, enabling a professional construction sector that works to create better, safer, and more sustainable buildings that enhance people's lives. CABE [online]. Available at: <https://cbuilde.com/> [accessed 27 February 2025]

Chartered Institute of Building (CIOB) [online]. The Chartered Institute of Building is the international voice of the building professional, representing an unequalled body of knowledge concerning the management of the total building process. Available at: www.ciob.org [accessed 27 February 2025]

CIOB Library Incl. Library and Information Services [online]. Available at: www.ciob.org/learning/library [accessed 27 February 2025]

CIOB People - construction's new people development resource, reaching 55,000 industry professionals. [online]. Available at: <https://ciobpeople.com/> [accessed 27 February 2025]

CIOB's Construction Management journal (formerly *Construction Manager*) [online]. Available at: <https://constructionmanagement.co.uk/> [accessed 27 February 2025]

CIOB's Global Construction Review journal [online]. Available at: www.globalconstructionreview.com/ [accessed 27 February 2025]

CIOB BIM+ online newsletter [online]. Available at: www.bimplus.co.uk [accessed 27 February 2025]

Chartered Institution of Building Services Engineers (CIBSE) – the prime source of expertise in the Building Services Industry. CIBSE [online]. Available at: www.cibse.org [accessed 27 January 2025]. N.B. Within the CIBSE website you can '**CIBSE - Search the Knowledge Portal**' covering themes such as BIM, Building Regulations, FM, Facades, Fire Safety, Lighting and Heating, Management, and project management, Residential, Sustainability, and more.

China Dialogue [online] – China and the world discuss the environment. Available at: www.chinadialogue.net [accessed 27 February 2025]

CIBSE Journal [online]. Available at: www.cibsejournal.com [accessed 27 February 2025].

The CIT-eA Project Creating Innovative Technology – Enhanced Assessments – a research project that explored ways to increase the number of assessments in Further and Higher Education using technology. The CIT-eA Project [online]. Available at: <http://citea.digitalinsite.co.uk> [accessed 27 February 2025]

Cities / buildings images database [online]. Available at: www.washington.edu/ark2 [accessed 27 January 2025] is a collection of images of buildings and cities from around the world aimed at students, researchers, and educators.

C-Link is a procurement software company who also provide resources (incl. guides, eBooks, and other materials) created to help you make more money on your construction project. C-Link [online]. Available at: www.C-Link.com [accessed 27 February 2025]

Commercial Real Estate Services (CBRE) is the world's largest real estate services provider, with a preeminent leadership position in virtually all key business centers globally. CBRE [online]. Available at: www.cbre.co.uk [accessed 27 February 2025]

Community-Led Housing (CLH) Toolkit: a resource for local authority and housing professionals' [online]. Available at: www.communityledhomes.org.uk/community-led-housing-toolkit [accessed 27 February 2025]. This Toolkit provides a wealth of technical and non-technical information on a

broad range of issues relevant to CLH. There are five Toolboxes, covering (i) Housing (ii) Communities (iii) Legal (iv) Planning and (v) Finance.

Confederation of British Industry (CBI) is the UK's premier business lobbying organisation, providing a voice for employers at a national and international level. CBI [online]. Available at: www.cbi.org.uk [accessed 27 February 2025]

Conference on Training in Architectural Conservation (COTAC) was formed in 1959 to improve the standard of education of everyone involved in building conservation, including craftsmen, professionals, and homeowners. COTAC [online]. Available at: <http://ihbconline.co.uk/cotac2> [accessed 27 February 2025]

COTAC Digital Bibliography [online]. Available at: http://cotac.global/digital_bib/ [accessed 27 February 2025]

Constructing Excellence (delivered with **bre**) is a platform for industry improvement to deliver excellence through clients, industry, and users through collaborative working. Resources include publications, tools, and newsletter. Constructing Excellence [online]. Available at: <http://constructingexcellence.org.uk/> [accessed 27 February 2025]

Construction Enquirer is a news website in construction. Construction Enquirer [online]. Available at: www.constructionenquirer.com [accessed 27 February 2025]

The **Construction Index** [online] provides a wide range of information services for the UK construction industry, that include a search engine of construction companies, daily construction news, market data, email newspaper letter, and Case Law analysis and legal commentary. Further information is available at: www.theconstructionindex.co.uk [accessed 27 February 2025].

Construction Industry Council (CIC) – The representative forum for the professional bodies, research organisations and specialist business association in the construction industry. CIC [online] and available at: <http://cic.org.uk> [accessed 27 February 2025]

The **Construction Industry Research and Information Association** (CIRIA) [online]. Further information and resources are available at: www.ciria.org/default.aspx [accessed 27 February 2025]

Construction Industry Training Board (CITB) is the training board for the construction industry and partner in Construction Skills, the Sector Skills Council. CITB [online]. Available at: www.citb.co.uk [accessed 27 February 2025]

Construction Manager is the magazine of the Chartered Institute of Building (CIOB) [online] and available at: www.constructionmanagermagazine.com/ [accessed 27 February 2025]

Construction News [online]. Available at: www.constructionnews.co.uk [accessed 27 February 2025]

Construction Products Association (CPA) represents the UK's manufacturers and distributors of construction products and materials. Construction Products Association [online]. Further information is available at: www.constructionproducts.org.uk [accessed 27 February 2025]

Construction Project Information Committee (CPIC), responsible for providing best practice guidance on the content, form, and preparation of construction production information, and making sure this best practice is disseminated throughout the UK construction industry. CPIC [online]. Available at: www.cpic.org.uk [accessed 27 February 2025]

Construction and Property Research Centre (CPRC), University of the West of England (UWE) – the CPRC's research activity is focused around the three inter-related stages of the built

environment lifecycle, namely design, construction, and maintenance. Note: The UWE **Centre for Architecture and Built Environment Research** (CABER) now incorporates the CPRC.

COPAC* exposes rare and unique research material by bringing together the catalogues of c.90 major UK and Irish Libraries. In a single search you can discover the holdings of the UK's national libraries (including the British Library), many University libraries, and specialist libraries. Note: From August 2019 Copac was replaced by **Jisc's Library Hub Discover**.

Copyright Licensing Agency (CLA) [online]. The CLA are a licensing body as defined by the Copyright, Designs and Patents Act 1988 c.48 (as amended) ["CDPA"]. The CLA licence organisations to copy and re-use extracts from print and digital publications on behalf of copyright owners. Available at: www.cla.co.uk [accessed 27 February 2025]

Council for British Archaeology (CBA) is an independent charity bringing together members, supporters, and partners to give archaeology a voice and safeguard it for future generations. Archaeology for all [online]. Available at: <http://new.archaeologyuk.org> [accessed 27 February 2025]

[Back to A to Z]

D

Delta T [online] is the Building Services Research and Information Association's quarterly journal. Bracknell: BSRIA [online]. Available at: www.bsria.com/uk/knowledge/bookshop/delta_t/ [accessed 27 February 2025]

Designing Buildings Wiki [online] and available at: www.designingbuildings.co.uk/wiki/Home [accessed 27 February 2025] is an industry-wide, cross-discipline forum for finding and sharing information.

Designing Buildings Wiki – Student resources [online] and available at: www.designingbuildings.co.uk/wiki/Student_resources [accessed 27 February 2025] has a wide range of resources aimed at students of the built environment, as shown here.

Designing Buildings Wiki – Construction industry acronyms [online] and available at: www.designingbuildings.co.uk/wiki/Construction_industry_acronyms [accessed 27 February 2025] providing a list of commonly used construction industry acronyms.

The **Design Council** [online] champions great design that improves lives and makes things better and available: www.designcouncil.org.uk [accessed 27 February 2025]. See also **Inclusive Design Hub for the Built Environment** (a project of The Design Council).

Directory of Open Access Books (DOAB) is a service which harvests details of academic and mainly peer-reviewed books published on open access. DOAB [online]. Available at: www.doabooks.org/doab [accessed 27 February 2025]

Directory of Open Access Journals (DOAJ) covers all open access scientific and scholarly journals, using a quality control system to guarantee the content. DOAJ [online]. Available at: <https://doaj.org> [accessed 27 February 2025]

[Back to A to Z]

E

Education and Employers Research - Online research library marks its tenth anniversary. This online library provides a comprehensive repository of different and effective approaches to employer engagement and careers education. It brings together the latest thinking with selected

research published over the past 40 years. Education and Employers [online]. Available at: www.educationandemployers.org/research-type/research-library [accessed 27 February 2025]

The Economics Network [online] provides publications, events, and other resources to support university teachers of economics throughout the UK and worldwide. Available at: www.economicsnetwork.ac.uk [accessed 27 February 2025]

EngineeringUK is a not-for-profit organisation, which works in partnership with the engineering community to inspire tomorrow's engineers and increase the number and diversity of young people choosing academic and vocational pathways into engineering. EngineeringUK [online]. Available at: www.engineeringuk.com [accessed 27 February 2025]

Engineering and Physical Sciences Research Council (EPSRC) is the main UK government agency for funding research and training in engineering and the physical sciences, investing more than £800 million a year in a broad range of subjects – from mathematics to materials science, and from information technology to structural engineering. EPSRC [online]. Available at: www.epsrc.ac.uk [accessed 27 February 2025]

English Heritage cares for over four hundred historic buildings, monuments, and sites – from world-famous prehistoric sites to grand medieval castles, from Roman forts on the edges of the empire to a Cold War bunker. English Heritage [online]. Further information is available at: www.english-heritage.org.uk [accessed 27 February 2025]. Note: English Heritage has now separated into two organisations. If you are looking for information on listing, planning, grants or heritage research and advice, please visit **Historic England**.

Estates Gazette The UK's largest commercial property news team. *Estates Gazette Interactive* [online]. Available at: www.egi.co.uk [accessed 27 February 2025] incl. **Estate Gazette, News from the nationals** – Round-up of the top property stories with quick links.

European Real Estate Society (ERES) was established in 1994 to create an international real estate network between academics and professionals across Europe. ERES [online]. Further information is available at: www.eres.org [accessed 27 February 2025].

ERES Digital Library [online] and available at: www.eres.org/index.php/activities/libraryeres [accessed 27 February 2025]

[\[Back to A to Z\]](#)

G

Great Buildings Online [online]. Available at: www.architectureweek.com/search.html [accessed 27 February 2025] provides a database of buildings around the world and across all historic periods. You can search the database by building names, place, or architect name. It provides access to 3D models, photographic images, and architectural drawings.

Glenigan [online]. Available at: www.glenigan.com [accessed 27 February 2025] provides UK construction project sales leads, market analysis, forecasting, and company intelligence.

Global Research Gateway: CBRE's online Insights and Research – a resource for real estate research and reports. CBRE Global Research Gateway [online]. Available at: www.cbre.com/insights [accessed 27 February 2025]

Global Construction Review – An online journal from the Chartered Institute of Building (CIOB) [online]. Available at www.globalconstructionreview.com [accessed 27 February 2025]

The Green Construction Board (GCB) is a consultative forum consisting of key members of UK construction and property industry. GCB [online]. Further information is available at: <https://cic.org.uk/projects/project.php?s=green-construction-board> [accessed 27 February 2025]

The Guardian, Housing network – providing insight, advice, and best practice from your community. The Guardian, Housing network [online]. Further information is available at: www.guardian.co.uk/housing-network [accessed 27 February 2025]

The Guardian, Higher Education / Universities [online]. Further information is available at: www.guardian.co.uk/higher-education-network [accessed 27 February 2025]

[Back to A to Z]

H

Health and Safety Executive (HSE) is the national independent watchdog for work-related health, safety, and illness. HSE are an independent regulator and act in the public interest to reduce work-related death and serious injury across Great Britain's workplaces. HSE [online]. Available at: www.hse.gov.uk/index.htm [accessed 27 February 2025]

HSE, Health & Safety in the construction industry [online]. Further information is available at: www.hse.gov.uk/construction [accessed 27 February 2025]

HSE Publications [online]. Available at: www.hse.gov.uk/pubns/index.htm [accessed 27 February 2025]

Heritage Alliance - The largest coalition of heritage interests in England, the Heritage Alliance is the umbrella body for national and major regional Heritage NGOs. Heritage Alliance [online]. Available at: www.theheritagealliance.org.uk [accessed 27 February 2025]

Heritage Update: the online edition of the fortnightly Heritage Alliance's **Heritage Update** e-bulletin [online] and available at: www.theheritagealliance.org.uk/update [accessed 27 February 2025]

Heritage Help - Created by the Joint Committee of the National Amenity Societies, Heritage Help offers information and advice on matters related to the management and protection of local historic environments. Heritage Help [online]. Available at: <http://heritagehelp.org.uk> [accessed 27 February 2025]

Historic England is the public body that looks after England's historic environment. Historic England champion historic places, helping people understand, value and care for them. Further information is available at: www.historicengland.org.uk [accessed 27 February 2025]

Historic Environment Local Management (HELM) - provides accessible information, training, and guidance to decision makers in local authorities, regional agencies, and national organisations whose actions affect the historic environment. Note: All HELM web content on the Historic England website [online] and available at: <https://historicengland.org.uk/services-skills/training-skills/helmtraining> [accessed 27 February 2025].

Home Builders Federation (HBF) represents and serves its members in a range of ways that include Ensuring senior politicians and government officials are aware of housing issues and the challenges faced by our members; and working with Government officials to ensure housing policies are introduced that facilitate housing supply, in a way that is workable for the industry [online]. Available at: www.hbf.co.uk [accessed 27 February 2025]

House Building Careers (part of HBF). Here you will be able to learn about the home building industry and how it benefits you, your community, and the country as a whole [online]. Further information available at: <http://housebuildingcareers.org.uk> [accessed 27 February 2025]

[\[Back to A to Z\]](#)

Inclusive Design Hub for the Built Environment is a collection of the latest guidance and best practice on inclusive design in the built environment and a project of **The Design Council** [online]. Available at: www.designcouncil.org.uk/projects/inclusive-design-hub-built-environment [accessed 27 February 2025]

INFABODE connects its community of users with industry information from the Real Estate sector on one customisable online platform. Infabode reduces the amount of time people spend trying to access key information from the Real Estate industry. **INFABODE** [online]. Available at: www.infabode.com [accessed 27 February 2025]

Institution of Civil Engineers (ICE) is a registered charity that strives to promote and progress civil engineering. ICE [online]. Available at: www.ice.org.uk [accessed 27 February 2025]

ICE Virtual Library [online]. Available at: www.icevirtuallibrary.com [accessed 27 February 2025] is a free database that indexes all ICE journals.

International Council for Open and Distance Education (ICDE) is the leading global membership organisation for enhancing the quality of open, distance, flexible and online education, including e-Learning. ICDE [online]. Available at: www.icde.org [accessed 27 February 2025]

Institute of Historic Building Conservation (IHBC) is the principal professional body for building conservation practitioners and historic environment specialists working in England, Northern Ireland, Scotland, and Wales, with connections to Ireland. IHBC [online]. Available at: www.ihbc.org.uk [accessed 27 February 2025]

Institute of Workplace and Facilities Management (IWFM) – Formerly the British Institute of Facilities Management, BIFM is now the IWFM. The workplace has been incorporated into their new brand so that the status of the professional can help take careers further, regardless of specialism. IWFM [online]. Further information is available at: www.iwfm.org.uk [accessed 27 February 2025]

IWFM Insight – discover leading research and resources for the workplace and facilities management profession. IWFM Insight [online]. Available at: www.iwfm.org.uk/insight [accessed 27 February 2025]

IWFM News – discover the latest news affecting the profession and gain expert insight and advice. IWFM News [online] Available at: www.iwfm.org.uk/news [accessed 27 February 2025]

IWFM Digital Magazine, *facilitate* - Informing workplace and facilities management professionals. IWFM *facilitate* [online]. Available at: www.facilitatemagazine.com/ [accessed 27 February 2025]

ITcon – The **Journal of Information Technology in Construction** is a peer-reviewed scholarly journal on the use of IT in architecture, civil engineering, and facility management. *ITcon* [online]. Available at: www.itcon.org [accessed 27 February 2025]

[\[Back to A to Z\]](#)

J

JISC Library Hub Discover – Library Hub Discover replaces COPAC* and SUNCAT, offering increased coverage of university libraries along with new facilities and improved response times.

Library Hub Discover currently contains 50,642,372 records created from 142,932,638 records contributed by 192 institutions. Jisc Library Hub Discover [online]. Available at: <https://discover.libraryhub.jisc.ac.uk> [accessed 27 February 2025].

JORUM Archive – After 13 years delivering and sharing content across the higher education, further education and skills sectors the Jorum service and website was retired on 30 September 2016. However, many of the open education resources (OER) that were available in Jorum, access to their Jorum Archive can be accessed via the JISC website [online]. Available at: www.jisc.ac.uk/website/legacy/jorum [accessed 27 February 2025] where you can also gain access to JISC’s full digital resources offer.

Journal of Online Learning and Teaching (JOLT) - The **MERLOT Journal of Online Learning and Teaching** is a peer-reviewed, open-access, online publication that aims to promote scholarship in the use of the Internet and web-based multimedia resource in higher education.

JournalTOCs is the largest, free collection of scholarly Journal Title of Contents (TOCs) [online]. Available at: www.journaltoocs.ac.uk/index.php [accessed 27 February 2025]

JSTOR Open Content - a digital library for scholars, researchers and students, JSTOR provides access to academic journal articles, books, and primary sources in seventy-five disciplines. Note: UCL Press publishes peer-reviewed scholarly monographs, edited collections, textbooks and journals. All of its books are available on: (a) **UCL Press**, and (b) **JSTOR** websites
[Back to A to Z]

K

[Back to A to Z]

L

Leeds Beckett University’s – School of the Built Environment, Engineering and Computing [online]. Further information that includes Subject Area Research – 1) Civil Engineering and Building Services Engineering, 2) Planning, Housing and Human Geography, and 3) Surveying, Construction and Project Management is available at: www.leedsbeckett.ac.uk/school-of-built-environment-engineering-and-computing [accessed 27 February 2025]

Leeds Beckett University’s - Sustainability [online]. Further Information is available at: www.leedsbeckett.ac.uk/leeds-sustainability-institute [accessed 27 February 2025]

Leeds Beckett University – The Library [online]. Available at: <http://libguides.leedsbeckett.ac.uk/home> [accessed 27 February 2025]

Lexology is a comprehensive source of international legal updates, analysis, and insights. Lexology publish more than 450 articles every day from over 1,100 law firms and service providers worldwide across fifty work areas in twenty-five languages. Lexology [online]. Available at: www.lexology.com [accessed 27 February 2025]

Local Government Association (LGA) is the national voice of local government. They work with councils to support, promote, and improve local government. LGA [online]. Available at: www.local.gov.uk [accessed 27 February 2025]

LGA Building Safety Knowledge Hub - The Local Government Association and the National Housing Federation are co-hosting an online social housing building owner network across England, to provide information, and develop and share good practice, on building safety. LGA [online]. Available at: www.local.gov.uk/topics/community-safety/building-safety-knowledge-hub [accessed 27 February 2025]

[\[Back to A to Z\]](#)

M

Multimedia Educational Resource for Learning and Online Teaching (MERLOT). The MERLOT project began in 1997, when the California State University Center for Distributed Learning (CSU-CDL) developed and provided free access to MERLOT [online]. Available at: www.merlot.org/merlot [accessed 27 February 2025]. MERLOT is a curated collection of free and open online teaching, learning, and faculty development services contributed and used by an international education community.

[\[Back to A to Z\]](#)

N

Naomi Korn Associates – Copyright Resources has developed free and openly licensed copyright, licensing and data protection help resources. Naomi Korn Associates [online]. Available at: <https://naomikorn.com> [accessed 27 February 2025]

National Building Information Modelling (BIM) Library, the construction industry's free-to-use resource of the NBS (trading name of RIBA Enterprises Ltd) standard BIM content [online]. Available at: www.thenbs.com/our-tools/nbs-national-bim-library [accessed 27 February 2025]

National Building Specification (NBS) is an integrated global platform for everyone involved in the design, supply, and construction of the built environment. NBS [online]. Available at: www.thenbs.com [accessed 27 February 2025]

NBS Knowledge [online] is available at: www.thenbs.com/knowledge [accessed 27 February 2025]

NBS Publication Index [online] - this index provides information about key industry documents which are or have been available in The Construction Information Service (CIS), or cited in NBS Guidance. Further information is available at: www.thenbs.com/Publicationindex [accessed 27 February 2025]

NBS Digital Construction Conversations podcasts – New to 2021, NBS are talking to inspirational industry leaders about the trends and technologies impacting the construction industry – from sustainability to regulations to change management. NBS Digital Construction Conversations [online]. Available at: www.thenbs.com/podcast [accessed 27 February 2025]

National Skills Academy for Construction (NSAfC) is an industry-led framework supporting clients and contractors to identify, develop and realise employment and skills solutions across construction projects. CITB, NSAfC [online]. Available at: www.citb.co.uk/national-skills-academy-for-construction [accessed 27 February 2025]. Note: It is facilitated by the Construction Industry Training Board (CITB).

The National Trust protect historic houses, gardens, mills, coastline, forests, woods, fens, beaches, farmland, moorland, islands, archaeological remains, nature reserves, villages, and pubs. The National Trust [online]. Available at: www.nationaltrust.org.uk [accessed 27 February 2025]

National Trust's Nature & Climate [online]. Available at: www.nationaltrust.org.uk/our-cause/nature-climate [accessed 27 February 2025]

New Civil Engineer (NCE) a weekly magazine published for the Institution of Civil Engineers (ICE). NCE [online]. Available at: www.nce.co.uk [accessed 27 February 2025]

We Are Nima – nima – nima’s ultimate vision is a thriving and sustainable built and natural environment transformed by exploiting purpose- driven data. nima [online]. Available at: <https://wearenima.im/> [accessed 27 February 2025]

[\[Back to A to Z\]](#)

O

Online Learning Consortium (OLC) is devoted to advanced quality online learning by providing professional development, instruction, best practice publications and guidance to educators, online learning professionals and organisations around the world. Online Learning Consortium [online] and further information is available at: <http://onlinelearningconsortium.org/> [accessed 27 February 2025]

OLC’s Online Learning – the official journal of the Online Learning Consortium. *Online Learning* [online]. Available at: <http://onlinelearningconsortium.org/read/> [accessed 27 February 2025]

Open Education Resources, Research Hub – OER Hub gathers research on the impact of open education resources (OER) on learning and teaching practices. OER Hub [online]. Further information is available at: <http://oerhub.net/> <http://oerresearchhub.org/> [accessed 27 February 2025]

Open Praxis – published by the International Council for Open and Distance Education – ICDE, *Open Praxis* is a peer-reviewed open access scholarly journal focusing on research and innovation in open, distance and flexible education. *Open Praxis* [online]. Available at: <https://openpraxis.org/> [accessed 27 February 2025]

Open University (OU) UK [online] and available at: www.open.ac.uk [accessed 27 February 2025]

Open University (OU) UK, Institute of Education Technology [online] and available at: www.open.ac.uk/iet/main [accessed 27 February 2025]

Organisation for Economic Cooperation and Development (OECD) iLibrary is the online library of the OECD, featuring its books, papers and statistics and is the gateway to OECD’s analysis and data. Note: It replaced SourceOECD. OECD iLibrary [online]. Available at: www.oecd-ilibrary.org [accessed 27 February 2025]

[\[Back to A to Z\]](#)

P

Parliament.uk, Research briefings produced by the House of Commons Library, the House of Lords Library and the Parliamentary Office of Science and Technology (POST). Parliament, Parliamentary business, Publications and records, Research briefings. Parliament.UK [online]. Further information is available at: <http://researchbriefings.parliament.uk> [accessed 27 February 2025]

Planning, BIM & Construction Today – The PBC Today website has compelling and informative features, news and products for a diverse audience serving a wide construction sector. PBC Today [online]. Available at: www.pbctoday.co.uk/news [accessed 27 February 2025]

Planning Advisory Service (PAS) provide consultancy and peer support, training sessions and online resources to help local authorities understand and respond to planning reform. PAS [online]. Available at: www.local.gov.uk/pas [accessed 27 February 2025].

Planning Officers Society (POS) is the voice for public sector planning practitioners, pursuing good and effective planning practice within local government [online]. Available at: www.planningofficers.org.uk [accessed 27 February 2025]

The Planning Portal is the UK Government's online planning and building regulations resource for England and Wales [online]. Available at: www.planningportal.co.uk [accessed 27 February 2025]

The Prince's Foundation was created by the merging of The Prince's Foundation for Building Community, The Prince's Regeneration Trust, The Great Steward of Scotland's Dumfries House Trust and The Prince's School of Traditional Arts in 2018. This combined force enables the charity to achieve HRH's goal of creating harmonious communities, through three core tiers. The Prince's Foundation [online]. Available at: <https://princes-foundation.org> [accessed 27 February 2025]

Property People's Network (PPN) is open to all interested in land and property and provides a forum to network through a range of social activities and visits [online]. Available at: www.ucem.ac.uk/product/corporate-ppn-membership/ [accessed 27 February 2025]

Property Week – Commercial property news. *Property Week* [online]. Available at: www.propertyweek.com [accessed 27 February 2025]

[Back to A to Z]

R

Regeneration and Renewal – Placemaking Resource incorporating Regeneration & Renewal magazine [online]. Available at: www.placemakingresource.com [accessed 27 February 2025]

Registry of Open Access Repositories - ROAR is hosted at the University of Southampton, UK and is made possible by funding from the JISC. ROAR is part of the EPrints.org network and promotes the development of open access by providing timely information about the growth and status of repositories throughout the world. ROAR [online]. Available at: <http://roar.eprints.org/> [accessed 27 February 2025]

Residential Landlord – an online resource providing Landlord Resources, a Document Download Centre (containing templates and free tenancy agreements to amend and use as required), news and views, advice, and guidance [online]. Further information is available at: <https://residentiallandlord.co.uk/> [accessed 27 February 2025]

The Royal Institute of British Architects (RIBA) is a global professional membership body driving excellence in architecture [online]. Further information is available at: www.architecture.com [accessed 27 February 2025]

RIBA Library – Visit the RIBA Library [online]. Available at: www.architecture.com/contact-and-visit/riba-library [accessed 27 February 2025]

RIBA Home > Knowledge and resources > Resources > RIBA Plan of Work [online]. Further information is available at: www.architecture.com/knowledge-and-resources/resources-landing-page/riba-plan-of-work [accessed 27 February 2025]

Royal Institution of Chartered Surveyors (RICS) is an independent body committed to setting and upholding the highest standards of excellence and integrity in land, property, and construction. RICS [online]. Available at: www.rics.org [accessed 27 February 2025]

RICS > News & Insights [online]. Available at: www.rics.org/news-insights [accessed 27 February 2025]

RICS > Upholding Professional Standards [online]. Available at: <https://www.rics.org/profession-standards> [accessed 27 February 2025]

RICS Publications (*Modus* and journals) - RICS publishes a range of journals that are free to view online. Available at: www.rics.org/news-insights/modus-and-journals [accessed 27 February 2025]

RICS Knowledge and Information Services – The aim is to combine the best of RICS's traditional library service (**RICS library catalogue**) and space with an enquiry and resource service, RICS Knowledge and Information Service [online]. Available at: www.rics.org/profession-standards/knowledge-and-information-services [accessed 27 February 2025]

Royal Town and Planning Institute (RTPI) is the UK's leading planning body for spatial, sustainable, and inclusive planning and is the largest planning institute in Europe with over 23,000 members. In 2014 they celebrate their Centenary. RTPI [online]. Available at: www.rtpi.org.uk [accessed 27 February 2025]

[Back to A to Z]

S

Savills Research – Savills Research, Insight & Opinion provides advice and analysis to clients across the UK, with specialists in commercial, residential, and rural property research [online] and available at: www.savills.co.uk/insight-and-opinion/research.aspx [accessed 27 February 2025]

Shoosmiths Insights & articles – Shoosmiths is a major UK law firm with a network of offices working together as one team. Read the latest insights, articles, and commentary from Shoosmiths or explore their content library that include – Placemaking; Real estate; Diversity & Inclusion; Litigation & disputes; Governance; Employment, and more. Shoosmiths [online]. Available at: www.shoosmiths.co.uk/insights [accessed 27 February 2025]

Specification Online – the free to use news and online products resource for specifiers working across the architectural and building sector [online] and available at: <http://specificationonline.co.uk> [accessed 27 February 2025]

Supply Chain Sustainability School represents a common approach to developing sustainability competence in the supply chain. It is a free resource available to any supplier and is part of their continued commitment to lead the industry into a brighter, more sustainable future. Supply Chain Sustainability School [online]. Further information is available at: www.supplychainschool.co.uk/uk/default-home-main.aspx [accessed 27 February 2025]

[Back to A to Z]

T

The Telegraph – Property and construction industry - The latest news, analysis and share prices on Britain's biggest construction and property companies. The Telegraph, Property and Construction Industry [online]. Available at: www.telegraph.co.uk/property-and-construction-industry [accessed 27 February 2025]

Tomorrow's Engineers brings together resources and evidence to support the engineering community in getting the most out of their engagement activity. Tomorrow's Engineer [online]. Available at: www.tomorrowsengineers.org.uk [accessed 27 February 2025]

Trust in Digital Repositories (TrustDR) – a research project that examined how to effectively manage the legal aspects of digital collections of learning resources and produced a policy

development toolkit. TrustDR [online]. Available at: <https://trustdr.digitalinsite.co.uk> [accessed 27 February 2025]

[\[Back to A to Z\]](#)

U

University College London (UCL) Press – UCL Press publishes peer-reviewed scholarly monographs, edited collections, textbooks and journals. All its books are available on: (a) UCL Press, and (b) JSTOR (see above).

UK BIM Alliance - here to help the built environment sector to take the first fundamental step in your journey to digital transformation. UK BIM Alliance [online]. Available at: <https://ukbimalliance.co.uk/> [accessed 27 February 2025]

UK BIM Framework – The overarching approach to implementing BIM in the UK. Further information on BIM Standards, Guides and Resources. UK BIM Framework [online]. Available at: www.ukbimframework.org [accessed 27 February 2025]

University College of Estate Management (UCEM) is the leading provider of supported distance learning for real estate and construction professionals. UCEM [online]. Available at: www.ucem.ac.uk [accessed 27 February 2025]

UCEM e-Library is a comprehensive and valuable online resource, supplementing teaching and learning materials and enabling students to access a wealth of subject-specific and credible information to support them throughout their studies. UCEM e-Library [online]. Available at: www.ucem.ac.uk/e-library [accessed 27 February 2025]

UCEM Research repository – a digital online archive which will allow free access to UCEM-produced outputs, including but not limited to research publications, podcasts etc. UCEM Research repository [online]. Available at: <https://ucem.repository.guildhe.ac.uk/> [accessed 27 February 2025]

University of the West of England (UWE), Centre for Architecture and Built Environment Research (CABER) seeks to develop innovative approaches, procedures, technologies, and techniques that support the design, management, reconfiguration, maintenance and operation of buildings, their fabric, and the environments they create. Note: CABER incorporates the previous Centre for Construction and Property Research (CPRC). CABER [online]. Available at: www1.uwe.ac.uk/et/research/caber.aspx [accessed 27 February 2025]

UWE Educational Resources for the Built Environment (ERBE) produces unique and highly respected educational resources for academic and professional use and incorporates the **Video Project** and the **Construction Website**. Further information can be found on the ERBE website [online] and available at: www.uwe.ac.uk/about/colleges-and-schools/arts-technology-and-environment/architecture-and-built-environment/erbe [accessed 27 February 2025]

- **UWE Construction and conservation films**
- **UWE Construction website**

UWE, Library, Search for things: A-Z [online]. Available at: www1.uwe.ac.uk/library/searchforthingsa-z.aspx [accessed 27 February 2025]

UWE, Research publications and reports – Providing immediate world-wide open access to all UWE's research output. Research at UWE Bristol [online]. Available at: www1.uwe.ac.uk/research.aspx [accessed 27 February 2025]

V

Virtual Training Suite - The Virtual Training Suite is a national eLearning service for Higher and Further Education in the UK, offering FREE "teach yourself" tutorials delivered over the Web, for students, lecturers and researchers who want to learn what the Internet can offer in their subject. This is a public service from **JISC**.

[\[Back to A to Z\]](#)

Y

Yale Environment 360 - an online magazine offering opinion, analysis, reporting, and debate on global environmental issues. We feature original articles by scientists, journalists, environmentalists, academics, policy makers, and business people, as well as multimedia content and a daily digest of major environmental news. *Yale Environment 360* [online]. Available at: <https://e360.yale.edu/> [accessed 27 February 2025]

Z

Zotero – Your personal research assistant. Zotero is a free, easy-to-use tool to help you organise, annotate, cite, and share research. Zotero [online]. Available at: www.zotero.org/ [accessed 27 February 2025]

(Note: The web links provided were correct at the time of compilation.)

UCEM e-Library - The UCEM e-Library has a searchable database ([e-Library > section 9](#)) containing circa 1,000 [Useful web-links to e-Resources](#) for all subject areas covered within our programme of studies, pertaining to the built environment profession and the education sector.

Disclaimer:

Knowledge Foundations (formerly the library e-bulletin) is intended to highlight news items and provide basic background information only. UCEM cannot accept responsibility for the content of external websites. Please view and refer to UCEM's [Terms of Use](#).

Please note: support for Internet Explorer is being removed by Microsoft and a number of platforms will no longer work on it, therefore you may need to use a PC with Google [Chrome](#), Mozilla [Firefox](#), Microsoft [Edge](#), or other browsers.

University College of Estate Management (UCEM), Horizons, 60 Queen's Road, RG1 4BS, UK – UK (Free): 0800 019 9697, International: +44 (0)118 921 4696, Email: library@ucem.ac.uk

UCEM Social media: [Facebook](#), [Twitter](#), [LinkedIn](#), [YouTube](#)

© Roper L (2025) *Knowledge Foundations* [online] Reading: UCEM. Available at: UCEM Website > Supported Online Learning > [e-Library](#)



This work is licensed under a [Creative Commons Attribution-ShareAlike 4.0 International License](#).