



UCEM Institutional Research Repository

Title	Knowledge Foundations, Issue 10 - October 2024
Author(s)	Lucy B M Roper
ORCID	https://orcid.org/0009-0008-3176-2266
Type	Other
Publication title	
Publisher	UCEM
ISSN/ ISBN	
Publication Date	1 October 2024
Version	
DOI	
Repository link	https://ucem.repository.guildhe.ac.uk/id/eprint/132/
Link to publication	https://www.ucem.ac.uk/e-Library

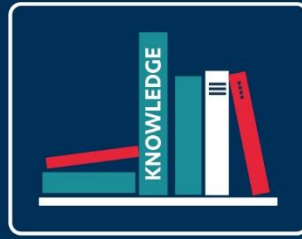
Copyright:

UCEM aims to make research outputs available to a broader audience via its digital [Repository](#). Where copyright permits, full text material held in the Repository is made freely available. URLs from GuildHE Research Repositories may be freely distributed and linked to. Please refer to each manuscript for any further copyright restrictions.

Reuse:

Copies of full items can be used for personal research or study, educational, or not-for-profit purposes without prior permission or charge provided that the authors, title and full bibliographic details are credited, a hyperlink and/or URL is given for the original metadata page, and the content is not changed in any way.

UCEM



Knowledge Foundations

Inside This Issue

- 01 [UCEM News](#)
- 02 [Other News](#)
- 03 [Property & Construction Statistics](#)
- 04 [Built Environment Research](#)
- 05 [e-Journal Review](#)
- 06 [e-Book Review](#)
- 07 [UCEM e-Library](#)
- 08 [Student Career Service](#)
- 09 [UCEM's Sustainability Hub](#)
- 10 [Information Governance](#)

[A to Z of useful references and web-links](#)

What's in this month's issue

- **Latest UCEM News**, incl. - UCEM launches website, known as 'Eerie Engineering', to raise awareness of engineering in schools, & part of the Royal Academy of Engineering.
- **Things you need to know this week** – Barratt, Homes England and Lloyds from JV. Joint venture will take master developer role on sites of 1000 to 10,000 homes under long-term partnership.
- **Latest Research** from Savills, RICS, CIOB, CBRE, JRF, The Smith Institute, and more.

Happy reading!

Issue 10 – October 2024

Welcome to UCEM's monthly *Knowledge Foundations* newsletter (formally the library e-bulletin), a compendium of news and views, research and resources relating to the educational sector and Built Environment.

The UCEM Library aims to disseminate information, promote current awareness, and share good practices, to assist in the continual professional development of all those working and aspiring to work within the Built Environment/Property and Construction industries.

“The mission of librarians is to improve society through facilitating knowledge creation in their communities.”

(R. David Lankes)

The initial aim of this UCEM Library's current awareness service was to help keep students and staff informed of the education sector and industry-specific news, share current and best practices, highlight the latest research, and identify case studies that will support studying and supplement teaching and learning resources. However, over the years and upon request, the readership has now expanded.

We welcome news and information from readers to include in future editions - please [email us](#).

Supported Online Learning

The readership of *Knowledge Foundations* has expanded (to include Alumni) and is now promoted further afield, with the latest version appearing on the UCEM Website.

[Visit Supported Online Learning](#)

[Back to top](#)

UCEM News

LATEST [UCEM News](#)

UCEM launches website to raise awareness of engineering in schools

Back in May 2024, UCEM was awarded [funding from the Royal Academy of Engineering](#), as part of its commitment to Widening Participation to Higher Education and the built environment.

UCEM's project, known as 'Eerie Engineering', is part of the Royal Academy of Engineering's [Ingenious public engagement award](#).

[A curated website has been developed](#) featuring a variety of mixed media materials (videos, images, and games) that use gruesome historical stories of buildings and scenarios from different cultural settings to introduce engineering concepts, such as physical forces and force-resisting elements in sustainable building construction.

Access further information and the article, '[UCEM launches website to raise awareness of engineering in schools](#)' in full.

Other UCEM News



© UCEM 2021

UCEM makes new appointments to Board of Trustees for September 2024

Following the recent retirements of Misa von Tunzelman and Chris Turley over the course of the summer and early autumn, UCEM has appointed two further new Independent Trustees to its Board.

Access further information and the article, '[UCEM makes news appointments to Board of Trustees for September 2024](#)' in full.

UCEM becomes approved IEMA University Partner

UCEM is pleased to announce that it has become an approved university partner of the Institute of Environmental Management and Assessment (IEMA). This partnership means UCEM's [MSc Innovation in Sustainable Built Environments](#) and [Level 7 Sustainability Business Specialist Apprenticeship](#) are now both accredited by IEMA.

Access further information and the article, '[UCEM becomes approved IEMA University Partner](#)' in full.

[Back to top](#)

Activate Learning launches new online Access to HE diploma in Built Environments with guaranteed undergraduate progress

Activate Learning is excited to announce the launch of a new [Access to HE Diploma \(Built Environments\): Online](#). This innovative programme provides a comprehensive pathway for learners aspiring to enter the built environment sector, with the added convenience of online learning.

Access further information and the article, '[Activate Learning launches new online Access to HE diploma in Built Environments with guaranteed undergraduate progression](#)' in full.

UCEM named Partnership of the Year at The King's Foundation awards

- UCEM is delighted to announced it has received **Partnership of the Year** award from the King's Foundation. These [inaugural awards](#), attended by His Majesty The King, Royal Founding President, are set to become a regular opportunity to recognise and celebrate the work of The King's Foundation.

Access further information and the article, '[UCEM named Partnership of the Year at The King's Foundation awards](#)' in full.

Related Link:

- [His Majesty King Charles III retains Patronage of UCEM](#)

LATEST UCEM Research News

UCEM hosts Research & Scholarship Engagement Day (RED)

UCEM hosted its second ever Research & Scholarship Engagement Day (RED). This was a hybrid event, hosted online and at Horizons, Reading, that brought together researchers, academics, and faculty members to share ideas, discuss research, and explore new collaboration opportunities.

Access further information and the article, '[UCEM hosts Research & Scholarship Engagement Day \(RED\)](#)' in full.

Related Links:

- [UCEM awarded research funding from the Royal Academy of Engineering](#)
- [UCEM awarded two research grants to explore gender equality challenges in 2024](#)
- [UCEM co-hosts international conference and signs partnership agreement with Batangas State University, Philippines,](#)

[Back to top](#)

LATEST UCEM Sustainability News

UCEM Student and Vice Chancellor contribute to major UK sustainability summit

- UCEM is committed to driving sustainability and inclusivity in the built environment forward. [UCEM's Sustainability Strategy](#) underpins this commitment, providing a clear roadmap to embed sustainability into everything we do.

Access further information and the article, [‘UCEM takes part in fourth sustainability accreditation audit’](#) in full.

Also:

UCEM takes part in fourth sustainability accreditation audit

The Responsible Futures accreditation aims to support institutions with embedding social responsibility and sustainability into their formal and informal curriculums. UCEM has held this accreditation [since 2018](#), and completed successive audits in [2020](#) and [2022](#).

Access further information and the article, [‘UCEM takes part in fourth sustainability accreditation audit’](#) in full.

UCEM celebrates receiving ISO 14001 certification

The awarding of an ISO 14001 certification (an internationally recognised global standard) is just one part of our wider sustainability strategy and fits into the **How we operate** stated of the UCEM's ongoing [Globe initiative](#). It also addresses 13 of the [Sustainable Development Goals](#) set out by the United Nations. Rather than existing within a silo, this certification forms part of our vision to create a culture of sustainability within the organisation.

VISIT THE **GLOBE** WEBPAGE



The next steps moving forward will be for UCEM to maintain this standard, keep up the hard work that went into achieving it, and more forward by displaying continuous improvement in future audits. Access further information and the article, [‘UCEM celebrates receiving ISO 14001 certification’](#) in full.

Related Links:

- [Globe: UCEM's ambition go create a more sustainable built environment](#)
- [Introducing: our Student Officers for Sustainability.](#)

Also: Please visit the [‘Sustainability Hub’](#) within **Knowledge Foundations** for further supporting information.

[Back to top](#)

Also:

[UCEM INSPIRE event brings together sustainability leaders, and related articles –](#)

UCEM's 'INSPIRE' series,

“INSPIRE - so that we can together INfluence for Skills, Productivity, Industry, Research and Education”

- **[Collaboration highlighted as key competency at fourth UCEM INSPIRE conference](#)**
- **[Foundations for success: UCEM convenes experts to improve built environment apprenticeships](#)**

[UCEM launches ‘Be part of the change’ to challenge lack of representation in the built environment](#)

[Tackling the Climate Crisis – deeper engagement from smaller and specialist universities highlighted in new report,](#)

[UCEM places 13th in list of best 50 training providers,](#)

[UCEM hosts hybrid workshop on gender equality in Jordan and Egypt,](#)

[UCEM joins campaign to drive better gender balance at board level,](#) and

- **[Access more information on UCEM’s diversity and inclusion objectives.](#)**

[CIOB and UCEM team up to deliver an apprenticeship with a route to chartered status,](#)

[UCEM gains indefinite degree awarding powers,](#)

Note: [Keep abreast of the latest UCEM News and events](#)

– Read our blog to keep updated on Building Environment industry insights, student case studies, and thoughts from UCEM Principal: Ashley Wheaton.

- **[For more on UCEM’s ambitions, take a look at the Institution’s Vision and Strategy brochure](#)**
- **[Build a better future with UCEM videos](#)**

Further information and the latest developments can also be found via the **[UCEM Website](#)**, & don't forget that the UCEM **[e-Library](#)** can be accessed 24/7 (via the VLE-Virtual Learning Environment) with a wealth of valuable resources to help 😊. If you have any further questions, please contact:

- Student enquiries – Student Central on our VLE
- Employer enquiries – **businessdevelopment@ucem.ac.uk**
- Other enquiries – Email: **reception@ucem.ac.uk**, Tel: +44(0)118 467 2100

[Back to top](#)

Other News

Things you need to know this week: Barratt, Homes England and Lloyds form JV

- Joint venture will take master developer role on sites of 1000 to 10,000 homes under long-term partnership.

Housebuilder Barratt Developments has signed up to a joint venture with government agency Homes England and Lloyds Banking Group to drive delivery of homes on large sites. The **MADE Partnership** will be a master developer for large-scale, residential-led developments of from 1000 to 10,000 homes, along with community and employment uses. Potential development opportunities will include large brownfield sites and new garden village-style schemes. The long-term partnership is initially backed by combined equity funding of up to £150 million, provided equally by the partners. Housing and planning minister, Matthew Pennycook, said the partnership would “support our commitment to ramp up housing supply and boost economic growth by delivering more large-scale, attractive and sustainable places.”

Also, this month –

- The final report of the Grenfell Tower Inquiry, published this month (see publication date), has highlighted construction industry failings and puts forward 58 recommendations for action. Recommendations include calls for a single regulator to be established for construction, for responsibility for fire safety to be brought under one secretary of state, and for reviews of the fire safety guidance in Approved Document B and of the definition of higher risk building in law. Some of the changes recommended by the inquiry are already in progress, having been put forward by the Independent Review of Building Regulations led by Dame Judith Hackitt and the Independent Review of the Construction Product Resting Regime.

- West Lindsey District Council has pledged to work with partners to “realise the potential” of a former Ministry of Defence site in Lincolnshire, following a government decision not to house asylum seekers there. The last government had intended to establish ‘pathfinder’ large asylum accommodation at the RAF Scampton site, but the new government has confirmed it will no longer be put to that use. In the wake of the decision, the council plans to accelerate regeneration plans and said it is “committed” to working with potential development partner Scampton Holdings. Peter Hewitt, chairman of Scampton Holdings, said, “We look forward to concluding our contract with West Lindsey District Council and moving into a period where we can work both with investors and the local community”.

[Back to top](#)

Also:

- A joint venture agreement has been signed to enable the development of around 750 homes on the site of Greater Manchester Police's former headquarters in Stretford.
- West Midlands Combined Authority (WMCA) mayor Richard Parker is in talks with the government about securing greater flexibility in how the authority can use its housing funding.
- Short-term thinking around making new urban places is resulting in a lack of the right infrastructure when residents start to move in, poor quality homes, a lack of emphasis on supporting the development of communities and a 'tick box' approach to issues like climate change. This is among the points highlighted in a new report from the University of Birmingham on [planning for intergenerational futures](#). The report culminates in nine recommendations.

[Read the article, Smit, J. \(2024\) 'Barratt, Homes England and Lloyds form JV', 8 September, in full.](#)

(Please note that you will need to register to access these stories in full, although you can 'Register free for limited access.' Visit the [PlacemakingResource](#), scroll to the base of the homepage, and access route within 'Subscription and Registration').

Case Study: Shaping a sustainable neighbourhood

- In Lewes, east Sussex, a developer worked with the community and local experts to create plans for a sustainable and sociable development, the author of this article writes.

In 1986, the Phoenix Iron and Steel Works closed its gates in Lewes, east Sussex, for the last time. From that time on, its site has remained undeveloped, with its aged metal sheds and other structures housing art studios, a theatre and music venues.

Over around two decades the site has been earmarked for redevelopment, with plans failing to materialise. But after securing planning consent in February (see publication date), regeneration is now in prospect.

Plans for the site include timber framed housing incorporating some locally sourced timber, renewable energy technology, sustainable travel, maker spaces and community amenities that encourage residents to come together. The development, called the Phoenix, is the debut scheme by developer Human Nature, a firm founded by Jonathan Smales and Michael Manolson, former directors of environmental campaign group Greenpeace.

Challenges – Human Nature bought the 7.9 hectare site beside the River Ouse in the South Downs National Park in 2021, aware that earlier redevelopment attempts had failed and encountered strong resistance from the local community. It therefore sought to work with the community to shape its proposals.

[Back to top](#)

At the heart of those proposals is the developer's vision for sustainable living. Human Nature's aim with the project is, says Smales, "to show that living sustainably can be a joy, not an exercise in self-denial, made far easier by the design of neighbourhoods".

Solution – The company has secured consent to develop 685 homes, 30 per cent of which are earmarked for affordable tenures with 154 homes being made available at local housing allowance levels. The masterplan has been created by the developer, working with design agency Periscope and design consultancy Arup although, overall, 12 architects are working on 18 different housing blocks across the site.

Under the masterplan, public squares are linked to amenities designed to encourage interaction and sustainable living and working. The ironworks' main casting hall will become a community canteen and flexible co-working space. The former smith's workshop will have rentable workspace to enable the site to continue to accommodate makers, artists and craftspeople, and feature a microbrewery and taproom. Where whole structures cannot be retained, materials and components will be recycled and reused where possible.

A co-mobility hub will be provided, incorporating electric-car share, car hire and car club, electric bike service, shuttle bus facility, vehicle servicing and repair and a 'last mile' freight facility carrying goods into the neighbourhood. There will also be spaces where residents can set up their own ventures in upcycling, repair and reuse and the Ouse riverfront will be opened up to the public with a river walk.

Climate-progressive innovations set to be incorporated into the scheme include a data-driven renewable energy system, which is expected to enable 10-20 per cent reductions in residents' energy bills, composting facilities and an urban farming and community gardening strategy.

The plans for the site were shaped through the developer's work with the community, which included a public exhibition attended by more than 1000 visitors, regular workshops, focus groups and briefing sessions with local people and working groups of local experts. The proposal went to planning with the backing of Lewes Town and District Councils, bodies such as Transition Town Lewes, and a high level of support from local people.

Human Nature's Smales has said that, alongside its environmental and social innovations, the development will be "a return to traditions we've forgotten". These are, he says "a place of elegantly designed buildings made using local materials, streets safe for children to play in, with most daily needs met within a short walk and where it's easy to meet and socialise with your neighbours."

[Back to top](#)

This thinking will start to be realised with development of the first parcel of land on the site, which will contain 44 homes.

Read the Case Study in full. Source: Smith, J (2024) 'Shaping a sustainable neighbourhood' in full.

(Please note that you will need to register to access these stories in full, although you can 'Register free for limited access.' Visit the [PlacemakingResource](#), scroll to the base of the homepage, and access route within 'Subscription and Registration').

Advice: Promoting reuse of buildings through planning policies

- With the built environment being such a major source of carbon emissions, local authorities can develop policies in their local plans that encourage property owners and developers to refurbish and adapt buildings instead of demolishing them, finds the author of this article.

With many local authorities declaring a climate emergency, the reuse of existing buildings, rather than wholesale demolition can help to reduce carbon emissions. "The built environment is a major source of carbon emissions, which we need to reduce by promoting reuse rather than demolition," says Simon Sturgis, founder of sustainability consultancy Targeting Zero. "Focusing on the repurpose and reconfiguration of existing buildings would help to reduce the effect that buildings and the construction industry have on the environment through reduced operational carbon emissions, embodied carbon savings and the reduction of waste."

"Retrofitting does pose challenges for designers and contractors, who have to think harder about the reuse of recycling of existing building elements, but the end result can create attractive environments," says Philip Egan, senior architect at consultancy Arup and one of the authors of a report, 'Repurposing and reconfiguring buildings' for the Construction Industry Research and Information Association (CIRIA).

"The government needs to offer a stronger steer to local authorities to prioritise retrofit, and to offer financial incentives to developers," says Richard Nelson, co-founder of the campaign group, Don't Waste Buildings, "VAT is charged on labour and materials on retrofit schemes, while demolition and new-build construction attract a zero rate," he points out.

Local planning authorities are developing planning policies that can promote the reuse and adaptation of existing buildings, rather than wholesale demolition. Here are three ways policies are being used to promote adaptive reuse.

1. Develop planning policies that prioritise scheme that prioritise reuse and adaptation,

[Back to top](#)

“Many London planning authorities, and some of the larger ones outside the capital, are putting together retrofit-fit policies,” says Sophie Bisby, senior planner at consultancy Lichfields. “These policies require developers to give priority to retrofitting their buildings before going for demolition.”

2. Demolition should be seen as the last resort – Demolition of the building is seen as the last resort by local authority retrofit-first planning policies.

3. Allow change of use or additional storeys as part of a retrofit – “Retrofit does not mean that the building cannot be altered or extended,” says City of London Corporation’s Joshi. “There are many examples in the City of London where a building’s use has been changed and storeys have been added as part of a retrofit scheme.”

For further information on each and access to the article, Kochan, B. (2024), ‘Advice: Promoting reuse of buildings through planning policies’, 6 September in full.

Analysis: The government’s drive for devolution

- The English Devolution Bill is key to the new government’s growth agenda, but questions remain around the detail behind the bill, finds the author of this article.

The progress of devolution appears inexorable, with the new Labour government picking up the baton held by the last with the King’s Speech in July. An English Devolution Bill gives more powers to metro mayors and combined authorities and is coupled with planning reform in the Planning and Infrastructure Bill and the Skills England Bill to drive educational opportunity and address skills shortages.

Government thinking was set out in earnest in the Labour policy paper, **Power and partnership: Labour’s plan to power up Britain**, which was published in March (see publication date), and confirmed by its election manifesto. The policy paper made clear its determination to step up the pace of devolution, pointing out that “nine of England’s 25 largest urban areas have no devolution settlement in place, with many more smaller towns and cities also left without the tools they need to grow”.

In response, the policy paper said the government would ask councils outside of an existing or agreed devolution deal or county devolution deal to begin preparatory work. Deputy prime minister Angela Rayner is understood to have written to local authorities, inviting them to submit proposals by the end of September 2024.

Central to the new government’s approach are statutory local growth plans, to be produced by combined authorities and counties with devolution deals in partnership with major employers, universities, colleges and industry bodies. These long-term plans

[Back to top](#)

are expected to be based on functional economic areas and align with the government's upcoming national industrial strategy.

Labour has also committed to reviewing the governance arrangements for combined authorities, with integrated settlements for the authorities that show "exemplary management of public money", according to its manifesto. It has pledged to provide multi-year funding settlements to local authorities and end the competitive bidding process, which has seen councils spend vast sums working up detailed but not necessarily successful proposals.

Going for growth - The three bills indicate that "the government is clearly looking to create the conditions for growth," said Tom Stannard, chair of professional body the Institute of Economic Development. Within this overall approach, he said that measure to reform planning and boost housing growth would be key.

He added, "It is important that the government goes beyond these measures to look at the cost of scheme delivery – for many areas of the country, marginal viability housing markets and commercial floorspace markets remain a huge challenge, so speeding up planning alone could have limited impact in these areas." He also pointed to a need for further clarification around government's investment role, for example through government agency Homes England, and likely successors to the last government's funding initiatives, notably the Levelling Up Fund and UK Shared Prosperity Fund.

Devolution progress and powers vary across England, with newer combined authorities like York and North Yorkshire Combined Authority still in their early stages, which suggests a need to put authorities on "a more even level" said Stannard. But those with advanced trailblazer deals "need to be able to go further", including "on their relationship with Homes England for affordable and social housing investment" he argued. Matt Prosser, president of public sector professionals' body, Solace, however, cautioned that devolution "must mean proper devolution of power to all areas and not just delegation."

[Further information and read the article, Smit, J., 'Analysis: The government's drive for devolution,' 30 July, in full.](#)

(Please note that you will need to register to access these stories in full, although you can 'Register free for limited access.' Visit the **[PlacemakingResource](#)**, scroll to the base of the homepage, and access route within 'Subscription and Registration').

Also: Analysis: Property prospects for 2023

- The UK may be desyined for recession this year (2023), but proptery and construction industry forecasters see some bright spots among the gloom.

[Smit, J \(2023\), 'Analysis: Property prospects for 2023'.](#)

[Back to top](#)

Education Latest [**September 2024**]

[Access the latest Education news](#)

Clarke V, and Hendry L (2024), '[Tuition fees must go up, unis say as term begins](#)' – Higher tuition fees and direct government funding are needed to halt a growing deficit in England, a group of 141 universities says. A fee rise linked to inflation and more government investment would ensure the sector “does not slide into decline”, according to proposals from Universities UK, [seen exclusively by BBC Radio 4's Today programme](#).

For Education sector-related articles, see also: UCEM student, Turner C (2022) '[Apprentice shares experience as she learns](#)', *Built Environment Journal*, London: RICS.
#BuiltForApprenticeships #BuildingControl #Apprentice

[School forced into daily Raac inspection](#) , and UCEM article (2023) '[The concrete crisis: what's being done to address RAAC risks](#)', 13th September. Reading: UCEM.

BBC Latest – Climate [**September 2024**]

[Access the BBC News, Latest Climate reality check](#)

[Climate a more fundamental threat than terror - Lammy](#)

- The foreign secretary has said climate change is a more pervasive and fundamental threat than terrorism.

In his maiden speech, 100 days after taking office, David Lammy said the climate issue, along with a decline in nature, would be “central to all the Foreign Office does”.

Hea also announced the government would launch a global initiative to accelerate the rollout of clean energy.

But Mr Lammy warned the UK's previous funding commitments on the issue would have to be reviewed given the “dire” state of the country's finances.

Access Stallard E (2024) '[Climate a more fundamental threat than terror - Lammy](#)', in full.

Also: - [A really simple guide to climate change](#). In addition, please visit the '[Sustainability Hub](#)' within *Knowledge Foundations* for further information and related articles.

BBC Latest - Coronavirus – latest developments [**September 2024**]

How much will AI help in the next pandemic?

- It's been dubbed “Disease X” – the next global pandemic, which some experts predict is pretty much bound to happen.

- Warning that Covid will ‘continue to surprise us’
- [New Covid and flu dashboard launched](#).

[Access the BBC Health News, incl. Latest Coronavirus pandemic news](#)

[Back to top](#)

Related Link(s):

[Access the BBC News article entitled, 'AstraZeneca to withdraw Covid vaccine,' in full.](#)

Also:

[Living with Covid plan to restore our freedom - PM](#)

[What are the UK's 'Living with Covid' plans?](#)

The evolution of building surveying education during COVID-19

Case Study: UCEM - In January and February 2020, as the pandemic was starting to gain momentum and spreading around the globe, universities in the UK were beginning to consider how to react. As a sector, UK higher education is relatively familiar with web-based methods of communication, teaching, and learning.

In fact, the University College of Estate Management (formerly the College of Estate Management) and the traditional home of RICS correspondence courses, operates their business totally online.

A lot of universities operate a Virtual Learning Environment (VLE) which allows them to communicate with their students and provides the opportunity to interact with them in terms of online courses and assessments, and as a depository for learning materials.

This allowed the students to revisit the materials to embed or reinforce their learning or to catch up if a session was missed. Common VLE's include Blackboard, WebCT, and Moodle. Their functionality and features are all relatively similar.

Although the physical libraries were closed, universities operate electronic libraries which offer access to a large number of electronic databases, and a growing number of books and journals, ensuring that the students and staff, can continue to access the majority of relevant information for their studies and research.

Note: Further information and the **UCEM e-Library Portrait** is provided later within *Knowledge Foundations*.

[Further information and access to the article 'The evolution of building surveying education during COVID-19', in full.](#)

[Access further information about UCEM's Supported Online Learning > e-Library.](#)

Lessons Learned - Did COVID-19 accelerate construction's digital transformation?

- With many industry professionals forced to work remotely, is now the perfect time for construction to get up to speed with all

[Back to top](#)

things BIM and digital? *Construction Manager* magazine discusses if the coronavirus changed the way we work forever.

David Philp – Global BIM/MIC consultancy director, AECOM says, **“It’s an opportunity to rethink how we can use technology and innovate.” (Philp 2020)**

Mark Boyle – Global design direct, Robert Bird says, **‘Our digital processes lend themselves to remote working.’ (Boyle 2020)**, and Gary Fannon – Technology director, Turner and Townsend says, **‘Early digital adopters will be reaping the rewards.’ (Fannon 2020)**

Andrew Gamblen – Digital manager, Willmott Dixon says, **‘People will become more comfortable collaborating remotely.’ (Gamblen 2020)**

Richard Saxon – CBE Chairman of JCT, client adviser at Deploi BIM Strategies says, **“Wartime scenarios” will push the digital agenda.’ (Saxon 2020)**

[Read the *Construction Management* \(formerly *Construction Manager*\) article ‘Will Covid-19 accelerate construction’s digital transformation’, in full.](#)

Related links:

What will the post-pandemic office look like? - With remote working seemingly here to stay, anecdotal evidence suggests that firms are looking to cut office space by up to 40%. How is the workplace having to evolve to remain relevant?

[Read the *Construction Management* article, ‘What will the post-pandemic office look like?’ in full.](#)

‘Generation Work from Home’ – the impact of default flexible working - The UK government has announced proposals to make flexible working a ‘day one’ right for employees, as part of reforms to the Flexible Working Regulation 2014.

[Read the Shoosmiths article, ‘Generation Work from Home’ – the impact of default flexible working’ in full.](#)

Free content related to Coronavirus, the management of epidemics and the wider impact on society



© Emerald Publishing 2021

Emerald Publishing, one of the UCEM e-Library subscription services, have brought together a number of research

[Back to top](#)

resources related to the Coronavirus group of viruses, and epidemics more broadly.

Emerald collated research and the management of epidemics and made it freely available to assist practitioners and researchers who are working to tackle the current situation and likely consequences. Whilst these materials do not only relate to the current clinical challenges of Novel Coronavirus, but they may also provide relevant context to how the world reacted to other previous Coronavirus outbreaks (notably SARS) and epidemics.

[Access Emerald Publishing's 'Coronavirus, the management of epidemics and the wider impact on society'](#)

Covid-19 and the impact on business

HSTalks

© Henry Stewart Talks Ltd 2021

HS Talks - Interviews with academics and experts from the business community, on the impact of the Covid-19 pandemic, are now available in the HS Talks 'Business & Management' collection that UCEM subscribes to.

1. [The impact of Covid-19 on organisations](#)
2. [The impact of Covid-19 on psychological safety in the workplace](#)
3. [The impact of Covid-19 on cybersecurity and data privacy](#)

[Latest News: Construction Management \(CM\) \(formerly Construction Manager\) \[September 2024\] Landlord fined after running 'firetrap' HMO](#)

- A Surrey landlord has been fined more than £31,00 after running a 21-room house in multiple occupation (HMO) which local authority officers described as a "firetrap".

Reigate and Banstead Borough Council took Epsom Pars Limited to court after council officers repeatedly warned it against continued non-compliance to no avail.

The company was notified of the works it needed to undertake and the timescales to complete them, but it ignored the warnings. Officers who visited the property described it as "cold", "damp", "filthy" and a "firetrap". Following continued non-compliance, the council decided to prosecute the company for the offences due to their number and severity.

Further information, as well as access to read the article in full – Lago C (2024) '[Landlord fined after running 'firetraop' HMP](#)', *Construction Management* [online], 17 September 2024. Available at: <https://constructionmanagement.co.uk/landlord-fined-after-running-firetrap-hmo/> [accessed 18 September 2024]

[Back to top](#)

Also: Roger, N. (2024) '[CIOB updates code of practice for programme management](#)', *Construction Management* [online], (05/24)

Mann, W. (2023) '[Reinforced autoclaved aerated concrete \(RAAC\): key questions answered](#)', *Construction Management* [online], (09/23). Useful RAAC guidance is shared, incl.:

- [Institution for Structural Engineers: RAAC investigation and assessment guidance page.](#)
- [Office of Government Property: RAAC safety briefing notice.](#)

Related article:

UCEM article (2023) '[The concrete crisis: what's being done to address RAAC risks](#)', 13th September. Reading: UCEM.

Latest News: *Global Construction Review (GCR)* [September 2024]

PwC China halts work on \$140m campus amid fall-out from Evergrande audit – Accountant PwC China has halted work on a \$140m business campus in China after it was sanctioned by China's Ministry of Finance, the *Financial Times* reports.

The company audited the accounts of Evergrande, the property company that was ordered to liquidate its assets in January after collapsing under a \$300bn debt pile. Last week (see publication date), the ministry imposed a record fine of \$62m on PwC China and **banned** it for six months.

Further information, as well as access to read the article in full – Rogers, D., (2024) '[PwC China halts work on \\$140m campus amid fall-out from Evergrande audit](#)', *Global Construction Review* [online], 18 September. Available at: www.globalconstructionreview.com/pwc-china-halts-work-on-140m-campus-amid-fall-out-from-evergrande-audit/ [accessed 18 September 2024]

Shoosmiths UK law firm Insights and Articles

- Read the latest insights, articles, and commentary from Shoosmiths UK law firm or explore their content library, or listen to the latest podcasts **[September 2024]** surrounding sectors such as **Living (Sector) incl. Commercial, Corporate, Real estate, Dispute resolution & litigation**, covering:

- **Forcing the point – how far must you go to work around unforeseeable events?** (09/24).

Also: ▪ **New guidance published on the implementation of the Building Safety Act 2022 in Wales** (07/24), and, ▪ **Court of Session upholds planning decision, with tilted balance 'now a thing of the past'** - On 3 May 2023, the Court of Session upheld the Scottish Ministers' decision to refuse Miller Homes Ltd planning permission for 250 homes in West Calder.

[Back to top](#)

How developers can prepare now for the Building Safety Act series:

How developers can prepare now for the Building Safety Act: Part 1 of 3

The Building Safety Act received Royal Assent on 28 April 2022. With aspect of the new regime unclear, this series of articles looks at what steps developers can take now.

How developers can prepare now for the Building Safety Act: Part 2 of 3

In Part 2, Shoosmiths discuss the duty holder regime and look at the steps developers can take now to prepare.

How developers can prepare now for the Building Safety Act: Part 3 of 3

In this final part of this series, Shoosmiths take a look at the new gateway regime for higher risk buildings.

Keywords – Real estate, ESG, New How Perspectives, New How,

The future of build-to-rent market Real Estate Podcast series Podcast – Government policy BTR (Build to Rent)

The future of the BTR market from Shoosmiths' Living team:

Podcast series #1 – The future of BTR (Build to Rent)

Issues discussed in this podcast include: Performance of the sector; Rent collection rates; Challenges of lockdown restrictions; How buildings and amenity space will change as a result of the pandemic; and where the market is going.

Podcast series #2 – The future of BTR (Build to Rent)

Issues discussed in this podcast include: Ongoing attractiveness of the sector; Top three things to look for in a BTR scheme; Future challenges for BTR; The role of technology, and BTR housing.

Podcast series #3 – The future of BTR (Build-to-Rent)

In this podcast, the last in this series, issues discussed include: Planning reforms; Permitted development rights; Rise of residential in the high street; Fire Safety; and Rent controls / regulations.

The Pathway to Lifelong Education: Reforming the UK's Skills System

- The UK has a longstanding skills problems which is impacting on economic growth. Adult participation in learning has declined, particularly among part-time students, while fewer people in work are taking up training to reskill or upskill. More

[Back to top](#)

generally, there is a shortfall in vocation and higher technical qualifications.

In this first report, with Ashley Wheaton, Principal, University College of Estate Management acknowledged as one of the contributing experts, the Lifelong Education Commission seeks to recommend how the barriers to adult learning can be removed; what future investment is needed to support this; and what change is needed to ensure the maximum flexibility that will benefit learners and deliver on the promise of a whole system change for lifelong education.

The Report makes a series of recommendations for reform, including:

- A single source of careers advice, to 'professionalise' and regulate careers information, advice and guidance
- Means-tested Maintenance Grants for learners over and above the Lifelong Loan Entitlement, in order to subsidise costs and encourage uptake, particularly among those for whom debt is a barrier
- The abolition of the Equivalent or Lower Qualification (ELQ) rules, to support retraining at higher levels
- Extending the Apprenticeship Levy to cover a wide range of high- quality training, including short modular courses, in order to provide additional flexibility and incentivise employer investment in skills training
- Stronger HE-FE partnerships to provide integrated pathways to higher-level skills; and alignment with industry and online providers to enable better coordination between schools, colleges, universities, and employers.
- Reform of the regulatory framework to simplify the jurisdiction between multiple qualification bodies;
- Learning lessons from Scotland, where 'articulation agreements' offer clear routes between FE and HE allowing students with Higher National Certificates and Diplomas to access the second or third years of degree programmes.

[Access the summary and report, 'The Pathway to Lifelong Education: Reforming the UK's Skills System' in full.](#)

Related Links:

FE news.co.uk (2021) '[Reforming the UK's Skills System – First Report from the Lifelong Education Commission](#)' [online]. Available at: www.fenews.co.uk [accessed 8 October 2021]

Learning and teaching reimagined - Exploring the 2020 experience as well as the changing aspirations of the nature and shape of learning and teaching for the future.

[Back to top](#)

Maguire D, Dale L, and Pauli M (2020) *[Learning and teaching reimagined: a new dawn for higher education?](#)* Bristol: JISC

New guidance from CIRIA - Construction Industry Research and Information Association

Latest update [August 2024] CIRIA is pleased to announce new [free CIRIA practice guidance](#) and publications that include:

[Code of practice for property flood resilience \(C790\)](#) –

This guidance provides confidence on the use of the standards within the code of practice that provides a benchmark for those procuring and delivering property flood resilience (PFR).

[The Management of advanced numerical modelling in geotechnical modelling \(C791\)](#) -

This guide provides a framework for those who oversee the process, provide the information needed for this task and use the results of the numerical modelling.

[Methodology for quantifying the benefits of offsite construction \(C792\)](#) -

This guidance proposes a framework for comparing construction approaches, making it possible to keep consistent records across projects and identify all the possible benefits available.

Other guides include:

[Retrofitting ground gas protection measure \(C795\)](#)

[Grouted anchors and soil nails \(C794\)](#)

Grenfell Tower Inquiry – Final report published

- The Grenfell Tower Inquiry was created to examine the circumstances leading up to and surrounding the fire at Grenfell Tower on the night of 14 June 2017.

[Latest update \[September 2024\]](#)

[Statement from the Panel](#) – [The Inquiry statement as the final report is published. Watch](#) - [Panel statement on the publication of the Grenfell Tower Inquiry Phase 2 report](#)

[Phase 2 Report](#) – The Inquiry has published its report on Phase 2 of its investigations.

[Phase 1 Report](#) – The Inquiry has published its report on Phase 1 of its investigations.

Also: Seventh anniversary statement – The Inquiry Panel made a statement for the 7th anniversary of the fire at Grenfell Tower.

- **[August 2024 Newsletter](#)** – The Inquiry has published an update on its work.

[Read further information from the ‘Grenfell Tower Inquiry’ website.](#)

[Back to top](#)

Related Links:

By visiting the 'Built Environment Research' section of *Knowledge Foundations* and House of Commons Library, you will note under 'Housing and Planning' and within 'Social policy,' the top research briefings include - **The Cladding External Wall System (EWS)**.

Also:

Cladding: Panels failed fire tests 13 years before Grenfell -





Leaked test results suggest the government and construction industry had early evidence of the dangers posed by cladding, 13 years before the Grenfell Tower fire.

Panels, commonly used on buildings in the UK, failed fire tests carried out in 2004. The Inquiry venue at 13 Bishop's Bridge Road, London, W2 6BU. The results marked "Commercial in confidence," were circulated within an industry advisory group. They were recently passed to the BBC (see publication date) and, until now, never made public. Hundreds of thousands of flat owners are now threatened with large bills because of construction materials which pose a risk in fires.

The 2004 results were among the first from a British test of full-scale building systems, developed in the late 1990s when there were growing concerns in Parliament about the risks of cladding. The tests were part of research commissioned the then Labour government to determine what standards building systems should have to meet.

Symonds T (2021) '[Cladding: Panels failed fire tests 13 years before Grenfell](#)', *BBC News* [online], 16 September. Available at: www.bbc.co.uk/news/uk-58584348 [accessed 23 February 2022]

Related Topics:

-  [Construction industry](#)
-  [UK fire safety](#)
-  [Grenfell Tower fire](#)
-  [Grenfell Tower Inquiry](#)

Also:

[RICS Fire safety Hub \[online\]](#) - containing advice for the public, building owners, landlords, corporate occupiers and RICS professionals and information on fire safety on buildings with external wall systems.

[Shoosmiths Insights](#) [online] - [Lessons from Grenfell: New fire safety responsibilities](#)

Amendments to the Regulatory Reform (Fire Safety) Order 2005 will add to the existing responsibilities of Responsible Persons under the Order which were expanded earlier this year (2023) by The Fire Safety (England) Regulations 2021[1].

[Back to top](#)

Government details fire safety-related changes to planning system

- The government has released details of new requirements in the planning system to bolster fire safety in high-rise residential buildings, in response to the Grenfell Tower Fire.

The changes come in the Ministry for Housing, Communities and Local Government's (MHCLG) plans to introduce '[planning gateway one](#)', which it said would deliver on one of Dame Judith Hackitt's recommendations following her independent review of Building Regulations and fire safety.

The new requirements aim to ensure fire safety matters as they relate to land use planning are incorporated at the planning stage for schemes that involve high-rise residential buildings.

The changes, which came into effect from **1 August 2021** will:

- involve the Health and Safety Executive (HSE) becoming a statutory consultee before permission is granted for development which involves or is likely to involve a high-rise residential building.
- require relevant applications for planning permission to include a fire statement to ensure applicants have considered fire safety issues as they relate to land use planning matters such as layout and access.
- help inform effective decision-making by local planning authorities or the secretary of state so that those decisions reflect and respond to the needs of the local community.

The new requirements will be introduced by making amendments to the Town and Country Planning (Development Management Procedure) (England) Order 2015.

As announced in the Queen's Speech (11 May), the Building Safety Bill is also expected to be introduced this year, which will establish a new building safety regime in England.

[Further information and access to the *Construction Manager* article, 'Government details fire safety-related changes to planning system,' in full.](#)

[RIBA Stirling Prize 2023](#)

The RIBA Stirling Prize is the UK's most prestigious architecture award. The award is given to the architect of the building thought to be the most significant of the year for the evolution of architecture and the built environment.

RIBA Stirling Prize winner 2023: John Morden Centre by Mae. The [John Modern Centre](#) by Mae has been named winner of The Royal Institute of British Architects (RIBA) Stirling Prize 2023, awarded to the UK's best new building.

[Back to top](#)

Founded in 1695, Modern College is a charity dedicated to providing older people in need with a home for life, including the provision of residential and nursing care. Further information (including a video of the project) is available via RIBA, [Architecture.com](#) [online].

Skills Agenda: Concerns for Skills Shortages in the 21st Century: A Review into the Construction Industry, Australia

This research paper addresses the underlying, influential factors concerning skills shortages in the Australian construction industry. The influential factors addressed include funding, training statistics, employer expectations, financial limitations, Industrial Relations and immigration.



UTS ePRESS is Open Access and licensed under [Creative Commons Attribution 4.0 International Licence](#).

[Read the full research report 'Concerns for Skills Shortages in the 21st Century](#).

Related Link: Sellers K (2024) '[Talent: where will tomorrow's skilled workers come from?](#)' [accessed at 18 September 2024]

Tomorrow's Engineers



© EngineeringUK 2021

Tomorrow's Engineers brings together resources and evidence to support the engineering community in getting the most out of their engagement activity. It includes information and guidance on a range of topics curated from across the STEM community.

[Access the Tomorrow's Engineers website](#)

RICS insight report: Women in surveying

- Women in surveying and the wider built environment sector face recurring challenges through their careers due to discrimination, bias (whether unconscious or intentional) and inequity in opportunities and systemic practices. This '23 [Women in Survey insight report](#) analyses existing RISC membership data and the results of their flagship 2022 Survey of women in the profession.

RICS's aim is to offer insights on why women are not progressing in their careers and remaining in the profession. This will enable individuals, teams and organisations to reflect and further examine their own behaviours, policies and practices, and more importantly, begin their journey in taking positive action to deliver change with lasting impact.

Also: [Access Women in construction: building a career in a challenging environment](#). Twelve case studies of women working in the construction industry and their experiences.

[Back to top](#)

RICS Market surveys – leading indicators in the real estate industry

Market surveys from the Royal Institution of Chartered Surveyors (RICS) include:

- **UK Residential Market Survey** – Used by government and key institutions, the Resi. Market Survey is a key indicator of conditions in UK residential sales and lettings.

- **Hong Kong Residential Market Survey** – The Hong Kong Residential Market Survey is a leading sentiment indicator of conditions in the Hong Kong residential sales and lettings markets.

- **UK & Global Construction Monitor** – The leading sentiment indicator of the construction markets.

- **UK Facilities Management Survey** – The UK Facilities Management survey is a quarterly indicator of activity and sentiment across the facilities management industry.

- **UK & Global Commercial Property Monitors** – The global commercial property monitors are leading indicators of conditions in commercial property occupier and investor markets around the world.

- **UK Economy and Property Market Update** – The Economy and Property Market Update is a new quarterly assessment of key macro, real estate and construction trends.

- **Market Surveys and Economic Analysis** – Used by governments, central banks, investors and other key stakeholders across the built environment, RICS market surveys provide a source of market intelligence.

Note: Further updates are provided within the 'Latest Property and Construction Statistics' section of *Knowledge Foundations*.

RICS – The Future of Surveying

- We know the challenges facing the built environment and the surveying profession – now it's time to act. We know the challenges facing the built environment and the surveying profession – now it's time to tackle them.

For over 150 years, RICS has led our profession through change, enabling our members to take advantage of the opportunities and manage the risks it presents. This change is now happening faster than ever, requiring us to think strategically about how we deploy our expertise and resource. To continue to provide leadership, we are constantly assessing our role as a standard setter, regulator, educator, and global professional body – to deliver confidence to governments, markets, and the public.

RICS Futures Report 2020 is our action agenda to keep up in a changing world.

[Back to top](#)

Access and download the Futures report to read RICS' full agenda for effecting change and responding to the biggest issues facing the natural and built environment, in full.

[Read the article, 'Future of Surveying' and gain access to the Futures report in full.](#)

GOV.UK, National Statistics - UK House Price Index: reports [Last updated September 2024]

- The [UK House Price Index](#) is a National Statistic.

The [Northern Ireland House Price Index](#) is calculated and published quarterly.

The UK House Price Index (UK HPI) captures changes in the value of residential properties. The UK HPI uses sales data collected on residential housing transactions, whether for cash or with a mortgage.

Contents include the following:

- July 2024
- About the UK HPI
- Archived reports and data

Data is available at a national and regional level, as well as counties, local authorities, and London boroughs.

The summary report contains:

- Headline statistics
- The economic statement
- Price changes
- Sales volumes
- The property status
- The buyer status for Great Britain (excludes Northern Ireland)
- The funding status for Great Britain (excludes Northern Ireland)
- Housing transactions distributions

[Read the GOV.UK, National Statistics: 'House Price Index: reports,' Last Updated 18 September' in full.](#)

Related Content:

1. UK House Price Index reports 2023
2. UK House Price Index: data downloads September 2022
3. UK House Price Index: reports 2022
4. UK House Price Index: data downloads October 2022
5. UK House Price Index for October 2022
6. UK House Price Index

Collection:

[Land registration: Data](#)

[Back to top](#)

Tackling mental health and wellbeing within the construction industry



© MHFA England

The construction industry reports some of the highest levels of workplace mental ill health.

Over the last three years (see publication date) Mental Health First Aid (MHFA) England has been working with Building Mental Health, the Construction Industry Training Board (CITB) and the Lighthouse Club Construction Industry Charity to create a freely available, industry-wide framework and charter to tackle the mental health crisis in the construction industry.

[Find out more about the social value of the programme](#)

Related Links:

Q&A with Harold Samuel Research Prize (HSRP) recipient, Dr Katharine van Someren

Research is a fundamental aspect of university life. It is used to gain a further understanding for assignments and dissertations and by academics to explore topics that will broaden our understanding of society and the world around us. The HSRP is an annual opportunity for those interested in the building environment to submit a research proposal on a topic that could offer sector-changing insights.

What is the relationship between job and financial security and mental health in the construction workplace? UCEM spoke with HSRP recipient Dr Katharine van Someren, about her research on UK construction workplace poverty. You can access [UK construction workplace poverty: the impact of financial and job insecurity on mental health](#) on UCEM's publication page to learn more about Katharine's research.

Access the article '[Q&A Harold Samuel Research Prize \(HSRP\) recipient, Dr Katharine van Someren](#)' in full.

UCEM mental health strategy

UCEM published its first mental health strategy on 10 May 2021.

The strategy is designed to benefit both UCEM students and staff, having been written with input from both stakeholder groups.

[Back to top](#)

At the core of the document is the vision which states: UCEM will take a whole institution approach to develop one community that enables students of all levels along with staff to prioritise mental health and wellbeing.

There are five strategic aims supporting this vision which are:

1. to create a supportive whole university community that promotes positive mental health, and ensures mental health is a key strategic priority.
2. to ensure the UCEM community is informed and aware of the importance of good mental health and works to tackle the stigma surrounding mental health.
3. to ensure appropriate and timely support is provided to those who need it.
4. to develop links with external support services and stakeholders
5. to use data to evaluate and monitor the effectiveness of mental health interventions and inform future strategic development.

For more details, take a look at [UCEM's mental health strategy document](#). Access the article '[UCEM launches mental health strategy](#)' in full.

Understanding Mental Health in the Built Environment

In May 2020, the CIOB published their report on Understanding Mental Health in the Built Environment. The report, which surveyed people across the globe, presented harrowing statistics of high numbers of workers experiencing extreme levels of stress over a prolonged period, with many people reporting that they had considered taking their own life in 2019.

Access the CIOB's latest report *Understanding Mental Health in the Built Environment*, including the results from the CIOB survey of over 2,000 professionals. [Access CIOB online Policy Portal, & 'CIOB surveys the sector to gather data on mental health & stress'](#)

How can buildings have positive impact on wellbeing?

BSRIA's Henry Lawson discusses the importance of designing buildings that promote 'Wellbeing.' The theory sounds compelling but in practice, creating such building is complex.

[Access and read 'How can buildings have positive impact on wellbeing' in full.](#)

[Read *Construction Manager* article\(s\) entitled, 'Samaritans to work with roofers on mental health' in full,](#) and

[Banner artwork highlights construction suicides](#)

Sustainable outcomes for buildings

The Royal Institute of British Architects (RIBA) has published

[Back to top](#)

guidance on targeting, designing, and evaluating sustainable outcomes for buildings, defining concise measurable set of eight sustainable outcomes that correspond to key UN Sustainable Development Goals and can be delivered on building projects of all scales.

Access the RIBA Sustainable Outcomes Guide

National Trust planning principles

National Trust (NT), a charity that works to preserve and protect historic places and spaces – for ever for everyone.

The National Trust protect historic houses, gardens, mills, coastline, forests, woods, fens, beaches, farmland, moorland, islands, archaeological remains, nature reserves, villages, and pubs. While they are very passionate about open spaces and historic places, they also work hard in other areas too, including the environment, food, farming, transport, and heritage – to name but a few.

Most of the work they do though is affected by much wider global issues, which is why their interests extend far beyond just bricks and mortar.

National Trust (NT) – “Our planning principles”

The National Trust principles are used to guide them in their decision-making on the way land is developed and managed and include:

1. **Seeking to influence** – The NT seek to influence the planning system at local, regional, and national levels,
2. **Supporting spatial planning** – The NT support spatial planning which takes a holistic approach to its environment and its resources,
3. **Sensible management** – The NT promotes the wise management of the natural environment and built and cultural heritage,
4. **Protecting our environment** – The NT will seek to protect wild and remote landscapes from built development or urbanisation.
5. **Using property management plans** – In managing its land through management plans, the NT will support and help to achieve objectives,
6. **Objecting to proposals, where appropriate** – The NT object to land use or marine-based proposals that have a significant adverse impact on its properties and their settings and context, or in its wider interests.
7. **Using a sustainable construction approach** – When proposing development on their land to meet justified needs, the NT will use a sustainable construction approach. This will include the following:

[Back to top](#)

- Minimising resource use and generation of waste,
- Being energy efficient,
- Minimising or preventing all types of pollution and risk of flooding,
- Safeguarding important wildlife, landscape, and historic interests,
- Respecting local/regional distinctiveness, supporting local sources for goods and services where practical, and
- Encouraging community involvement and access.

The National Trusts' conservation process

The NT have developed the following criteria to ensure online suitable projects proceed:

- Adhere to the policies in the relevant local plan,
- Deliver energy efficiency and reduce carbon dioxide emissions,
- Build in harmony with the local environment, built and natural,
- Involve the local community throughout the process.

[Read the National Trust Land use and planning.](#)

[Access the National Trust website and our cause](#) (including Nature and climate, History and heritage, and Communities).

Foster + Partners Projects

Foster + Partners Projects – one of the most innovative architecture and integrated design practices in the world. Over the past four decades the practice has pioneered a sustainable approach to architecture through a strikingly wide range of work, from urban masterplans, public infrastructure, airports, civil and cultural buildings, offices and workplaces to private houses and product design. By visiting their website, you can gain further information about their current and past work, upcoming projects, and gain access to their-

- Image gallery,
- Sketches and drawings,
- Construction, - Facts and Figures, and
- Project downloads.

[Access Foster + Partners Projects](#)

New RIBA Plan of work 2020

RIBA Plan of Work 2020. This blog takes a look at the new RIBA Plan of Work 2020.

What is the RIBA Plan of Work? The Royal Institute of British Architects (RIBA) first published the RIBA Plan of Work.

[Back to top](#)

in 1963. It originally provided a matrix to show the roles of participants in the design and construction processes.

It has since been updated in several editions, most recently in 2020. This has allowed it to adapt to the complexity of modern projects, industry demands and legislative and regulatory requirements.

What changed in 2020? In 2020, key changes were made to reflect the importance of sustainability and Building Information Modelling (BIM) in construction. The Plan of Work now also incorporates issues such as digitisation of the industry, Modern Methods of Construction, ethical issues, the value of aftercare and timing relating to planning applications and procurement.

This has included restructuring and renaming of the work stages from the 2013 Plan of Work:

0 – Strategic definition – no change

1 – Preparation and briefing – brief amended to briefing

2 – Concept design – no change

3 – Spatial coordination – formerly Developed design

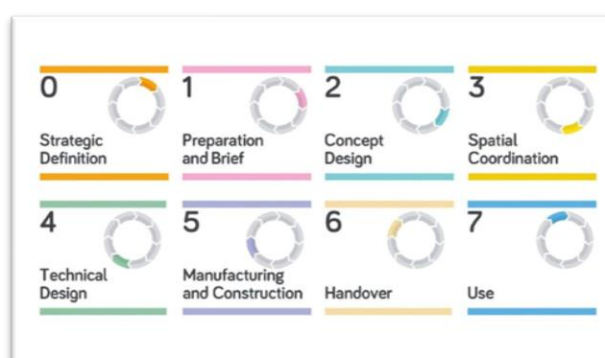
4 – Technical design – no change

5 – Manufacturing and construction – formerly Construction

6 – Handover – formerly Handover and close out

7 – Use – formerly in use

RIBA Plan of Work 2020:



© RIBA 2020

Source: Royal Institute of British Architects (2020) 'RIBA Plan of Work'

Note: The author of this blog, Jen Lemen-Hogarth is an Associate Tutor – UCEM and Partner – Property Elite.

[Access Property Elite's, Building Better Property Professionals, 'New RIBA Plan of Work 2020' \[Blog\], in full](#)

[Back to top](#)

Autodesk and CIOB map the digital construction journey

Autodesk and the Chartered Institute of Building (CIOB) have prepared an infographic to help construction businesses visualise their position on the digital journey.

[Access more information, view the infographic and read the article, entitled 'Autodesk and CIOB map the digital construction journey' in full.](#)

[Access further information from CIOB 'Digital Construction'](#)

- Digital technologies are now an integral part of our built environment. The choice is not when or if built assets will use technology, but rather how much will be used.

Building Information Modelling (BIM)

[UK BIM Framework – BIM Standards, Guides and Resources](#) - the overarching approach to implementing BIM in the UK, brought together by UK BIM Alliance, BSI and CDBB. The guidance is structured as indicated below:

Guidance Part 1 and **Guidance Parts A-F** support the implementation of the overall published ISO 19650 series. **Guidance Part 2 and 3** pick up on content specific to ISO 19650-2 and ISO 19650-3, respectively. Additional **guidance** is also available as part of the **UK BIM Framework** to support the transition to ISO 19650 and Government Soft Landings

[Access UK BIM Framework - Resources](#)

[Latest BIMPlus News and Projects](#)

[September 2024] –

- **Projects – Digital collaboration drives Altu and Elliott on Dublin project, 10 September 2024**
 - ALTU Architects and Elliott Group worked together to deliver the Eglinton Place residential scheme in Dublin, with Archicad and BIMx driving their digital collaboration.
 - Situated on a busy corner site in the popular suburb of Donnybrook Village in Dublin, Eglinton Place is a high-density, build-to-rent residential scheme at the gateway to the city.
 - Completed in May, the development includes 148 one-, two- and three- bedroom homes, including nine duplex units, plus shared amenity facilities and spaces.
 - Dublin-based [Altu Architects](#) joined the project for the construction phase to work with contractor [Elliott Group](#) and client Richmond Homes in bringing the ambitious design to life.

[Back to top](#)

The team started by remodelling the entire building in **Archicad** from scratch. This enabled them to make full use of Graphisoft's visualisation tool **BIMx** throughout the build.

Altu associate director Michael Harty joined the project eight months in and needed to quickly get up to speed with the complex design.

He explains: "This was a highly complex project. The BIMx model that we exported directly from Archicad was invaluable, both in gaining a thorough understanding of the design at the start, and to address any challenges and queries throughout the project."

Eglinton Place

Client: **Richmond Homes**

Architect/designer: **Altu Architects**

Main contractors: **Elliott Group**

Other areas covered in this article include the following:

Every small detail – The building varies in height from three to four storeys along Brookvale Road, five to 12 storeys along Donnybrook Road, and four to 12 storeys along Eglinton Road.

Supply chain collaboration – The complexity of the project required collaboration with a large number of subcontractors, from structural engineers to acoustic consultants, façade specialists and landscape designers.

Clarification requests – Due to the project's complexity, there was a large volume of requests for clarification issues to the design team. The Archicad model's detail, coupled with the easy visualisation and mark-up in BIMx, was key in responding to the queries.

Also:

- [Digital collaboration drives listed building retrofit](#)
- [Graphisoft reveals AI visualiser for Archicad](#)
- [Digital collaboration key to Manchester campus success](#)
- [Maber uses Archicad to aid collaboration on medical research facility](#)

Gain access to further information and full access to the project case study article by BIMplus Author (2024), entitled, '[Digital collaboration drives Altu and Elliott on Dublin project](#)', **BIMPLUS** Projects.

[Back to top](#)

Other BIMPLUS Projects include:

- **Projects – Sir Robert McAlpine’s role in the world’s smartest museum**, 31 May 2024.

- Can a heritage museum be smart too? That’s the plan for the new Museum of London in London’s historic Smithfield market, opening in 2026 under the name of London Museum.

Gain access to further information and full access to the project case study article by Smith, K., (2024), entitled, [‘**Asir Robert McAlpine’s role in the world’s smartest museum**’](#), BIMPLUS Projects.

- **Projects – Airedale hospital tackles RAAC with GIS-based digital twin**, 25 March 2024.

- West Yorkshire-based Airedale General Hospital is saving time monitoring its issues with reinforced autoclaved aerated concrete (RAAC) thanks to a digital twin developed by BIS Consult.

- **Projects – The digital transformation of Auckland’s water works**, 25 March 2024.

- The agency tasked with surveying 45,000 bridges in France in just 18 months turned to Esri’s ArcGIS platform to facilitate its work.

Gain access to further information and full access to the project case study article by Farkadi, F. and Webster, S. (2024), entitled, [‘**The digital transformation of Auckland’s water works**’](#), BIMPLUS Projects.

- **Projects – How to handle data from the survey of 45,000 bridges**, 19 March 2024.

- The agency tasked with surveying 45,000 bridges in France in just 18 months turned to Esri’s ArcGIS platform to facilitate its work.

Gain access to further information and full access to the project case study article by Koeppel, I. (2023), entitled, [‘**How to handle data from the survey of 45,000 bridges**’](#), BIMPLUS Projects.

- **Projects – BIM’s role in bungee jumping**, 23 January 2024.

- 180kph winds, monsoon rain, landslides: designing and building the tallest bungee tower in the Himalayas was just as challenging as jumping off the structure when complete. Jana Miller of Bentley Systems spoke to the engineer that took on both challenges.

Gain access to further information and full access to the project case study article by Miller, J., (2023), entitled, [‘**BIM’s role in bungee jumping**’](#), BIMPLUS Projects.

[Back to top](#)

BIM in action: 2020's top five projects

22 December 2020

- Hospitals, housing, hotels: **BIMPLUS** covered case studies of BIM in action in all sorts of construction projects across the world. Given what happened in 2020, it's not surprising that three of the most read case studies focus on hospitals.

2020's top five projects (and all covered within this and previous issues of *Knowledge Foundations*) incl.

1. [Sisk reap rewards of high-tech approach at Wembley](#)
2. [Finland's Hospital Nova uses VR to involve staff in building](#)
3. [NHS Nightingale Hospital, East London – how BIM played its part](#)
4. [Mace uses AI tech on Mayfair project to meet covid-19 safety challenges.](#)
5. [AI tracks work quality at Norway's Stavenger Hospital.](#)

[Access BIM+ that include project entitled, 'BIM in action: 2020's top five projects' available in full.](#)

Related BIM+ Projects

- **(1) Project: [John Sisk relies on BIM best practice to deliver Malmo data centre](#), 2nd November 2020.**

- John Sisk & Son is nearing completion on a data centre project in Malmo, Sweden. Adopting BIM best practice has been crucial to keep construction on programme given a fast-tracked programme amid the Covid-19 pandemic.

The John Sisk & Son team has nearly 40 years of experience in data centre construction and has brought a digital project delivery approach to the Malmo project.

Sisk highlights some significant outcomes:

- The Sisk team-built dashboards that stored live clash trend reports to track progress weekly, resulting in a 50% efficiency increase in the BIM management process compared to traditional, manual methods of construction coordination without the automating power of the cloud.
- The tight integration between BIM 360 Docs, Microsoft Power BI, and Sisk's own "Design Changes Control" dashboards provided the commercial teams with a faster way to visualise the cost and/or schedule impacts, reducing the overall take-off by a potential 40%
- By using BIM 360, the project continued uninterrupted as construction continued in Sweden during the Covid-19 pandemic.

[Back to top](#)

- **(2) Project: [Finland's Hospital Nova uses VR to involve staff in building](#), 28th April 2020.**

Lead Contractor: The Central Finland Health Care District
BIM Tools: Tridify

- Innovative processes have been used in the co-design of Finland's new Hospital Nova using BIM models and involving more than 350 staff.

- **(3) Project: [NHS Nightingale Hospital, East London – how BIM played its part](#), 5th May 2020.**

Client: Barts Health NHS Trust, Royal Free London NHS Foundation Trust

Lead Contractor: Lead Designer: BDF

BIM Tools: Autodesk Revit

- The UK's newest (see publication date) and largest hospital, based at the ExCel conference centre in London's Docklands, is designed to care for up to 4,000 people affected by Covid-19. The hospital is now in standby mode and will be used should cases in the London area rise again.

- **(4) Project: [Mace use AI tech on Mayfair project to meet Covid-19 safety challenges](#), 1st October 2020**

- Work was already underway on Lodha's No 1 Grosvenor Square flagship project when the lockdown and then social distancing added to the normal construction challenges.

Client: Lodha; Main contractor: Mace

Balancing the many requirements of a building project – cash flow, cost, quality, and timelines – is always a significant challenge for project leadership. The Covid-19 pandemic made the balancing act even more intense, costing projects valuable time at the start of lockdown and requiring adjustments to ensure the health and safety of all personnel on site as production restarted.

- **(5) Project: [AI tracks work quality at Norway's Stavanger Hospital](#), 21st June 2020.**

Client: Stavanger University Hospital

BIM Tools: 100% International open standards, compatible with Revit, ArchiCAD, Solibri and others

- Oslo-based BIM developer Imeroso has been given responsibility to monitor work progress in one of the biggest public construction projects in Scandinavia.

[Access the Chartered Institute of Building's \(CIOB\), BIM+ articles, projects, case studies and more, in full.](#)

Latest BIM news – 10th annual BIM report 2020 available
NBS 10th National BIM Report 2020 - It illustrates how usage and perceptions of BIM have changed since 2011, progress made as an industry, and anticipated changes in the next decade.

Construction Information Service (CIS) Insights

The latest edition [[September 2024](#)] of NBS CIS *Insights* focuses on – **Sustainable Futures UK Report 2024**, and covers -

- Insights from industry professionals' perspective,
- Sustainable outcomes and the barriers we face, and
- The future of sustainability policy and the role of specification and project information.

[Back to top](#)



Property and Construction Statistics

Latest Property and Construction Statistics from RICS:

- Input from RICS Professionals ensure RICS surveys are leading indicators in the real estate industry.

Latest: Market Surveys - RICS [[September 2024](#)]

UK Economy and Property Market Update, [August 2024](#)

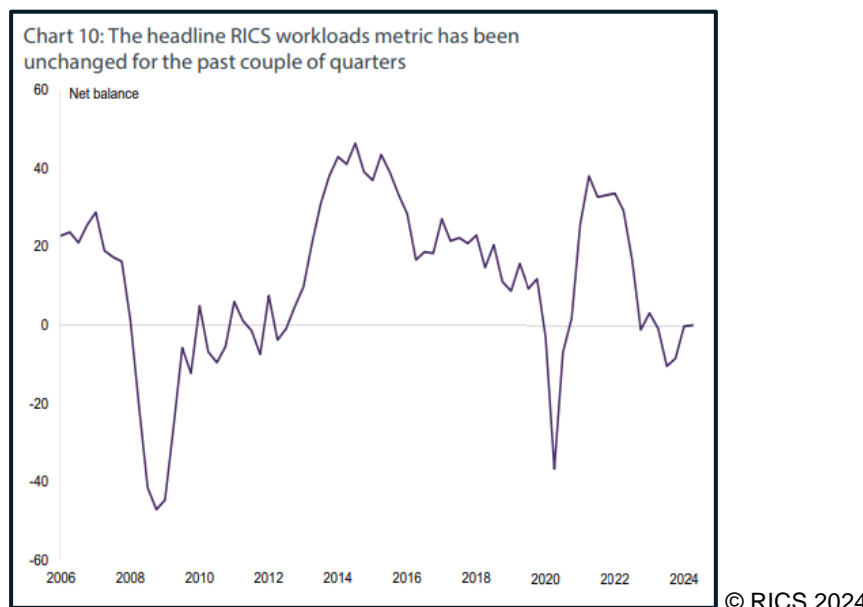
- Turn in interest rate cycle should help support real estate and construction.

Summary: The August interest rate cut by the Bank of England may or may not be followed by further reductions over the coming months but the direction of travel has now shifted and this will help support economic activity through the back end of the year (2024) and into 2025. The *RICS Construction Monitor* continues to highlight financial constraints as the key impediment to activity demonstrating the significance of this signal for the building industry. Alongside this, forward looking indicators point to a likely modest uplift in activity in the residential sector while polarisation between asset performance will remain a major feature in the commercial real estate market.

Construction Sector – The official measure of construction output continues to be viewed as requiring caution in interpretation with a suspicion by industry analysts that it has been overestimating volumes over the past couple of years. For the record, the latest data shows output around one percent higher than where it was in the same month of 2023 but still down on the peak. The concern about these figures has increased focus on sentiment surveys such as the *S&P Construction PMI* and *RICS UK Construction Monitor*. The former does suggest the a positive trend in activity has begun to emerge in recent months but

[Back to top](#)

Feedback to the latter (which has a significantly larger sample) is a little more circumspect as highlighted in Chart 10; this indicates that workloads have been flat for the past two quarters. Disaggregating the RICS activity number shows infrastructure remains the one areas seeing positive momentum at the present time.



Source: RICS Economics Research: *RICS UK Economy and Property Market Update* (August 2024), London: RICS, p5 - Chart 10.

[Read the full piece of research 'RICS UK Economy and Property Market Update, August 2024](#)

Also:

[UK Economy and Property Market Chart Book, Q4 2020](#)

- Agreed sales rise over the month with expectations modestly positive regarding the near-term outlook

[UK Residential Market Survey: August 2024](#)

- Sales market activity responds positively to the recent easing in mortgage interest rates.

- New buyer demand rises noticeably over the month,
- Number of sales agreed also improves, with near-term expectations pointing to further growth,
- National house price indicator moves out of negative territory.

The August 2024 *RICS Residential Survey* results show an improvement in sales market activity over the month, supported by the recent (modest) softening in mortgage interest rates. Moreover, respondents foresee the market gradually gaining further impetus moving forward, even if the near-term outlook for monetary policy remains relatively tight compared to much of the post global financial crisis era.

At the aggregate level, a net balance of +15% of survey

[Back to top](#)

participants noted an increase in new buyer enquiries during August (up from a figure of +4% beforehand). What's more, this marks the most positive reading for the demand series since October 2021, although it should be emphasised that this pick-up is coming from a low base.

Meanwhile, the newly agreed sales indicator posted a net balance reading of +6% modestly higher than the figure of -1% seen last time. Going forward, contributors anticipate the recent uptick in demand to translate into a more meaningful increase in sales volumes over the coming three months, evidenced by the near-term sales expectations measure recording a net balance of +37%. Further ahead, a net balance of +45% of respondents envisage sales activity strengthening over the next twelve months, extending the recent sequence of firmly positive readings for this indicator.

In terms of fresh listings coming onto the market, the new instructions series produced a net balance of +7% in August (compared to +3% previously). As such, this is consistent with a slightly positive trend in the flow of instruction beings listed for sale. Similarly, a net balance of +23% of respondents report that the number of market appraisals undertaken during August was higher than that seen twelve months ago. Consequently, it would appear that the near-term pipeline for supply set to become available on the second-hand market is relatively solid at this stage.

[Read the latest RICS UK Residential Market Survey: August 2024 in full.](#)

RICS - SPACIOUS 千居 Hong Kong Residential Monitor / Market Survey: July 2024

- Sales market sentiment continues to deteriorate, while the rental market demonstrates resilience.

- Headline confidence index still stuck in negative territory,
- Sales market activity continues to slow, and
- Lettings market metrics shows more optimistic signals.

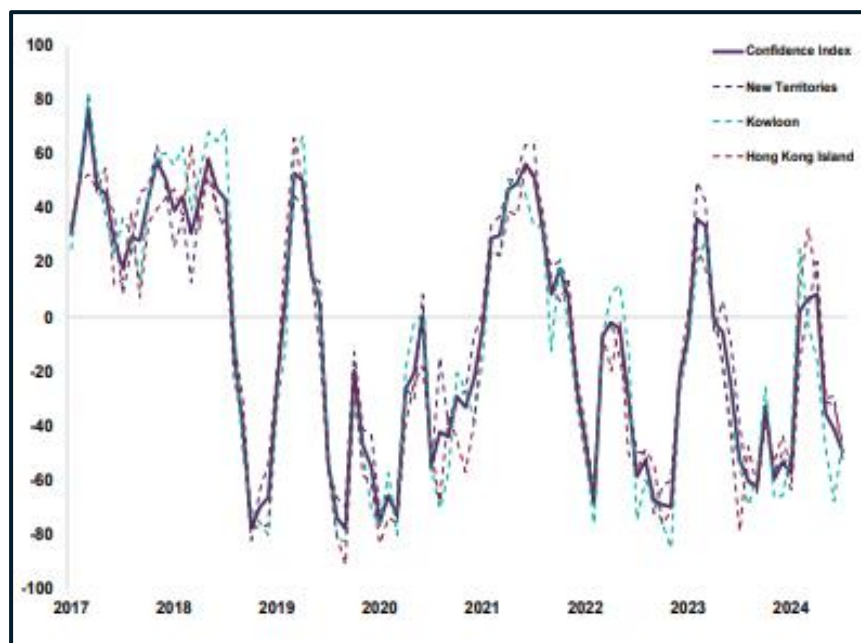
The feedback from the July *RICS-Spacious Hong Kong Residential Property Monitor* shows a continued weakening in sales market sentiment.

As highlighted in Chart 1, the headline confidence index fell from -41 to -50 over the month (see publication date). These negative results are visible across all districts, with similar readings recorded in each instance. By the way of contrast, sentiment in the lettings market is being supported by robust tenant demand, with much of this positivity attributable to the newly introduced visa programmes.

[Back to top](#)

Both sales and price expectations remain subdued – Overall, the sales market continues to show weakness in both pricing and sales volume trends.

Chart 1: Confidence Index*:



© RICS 2024

Source: RICS Economics Research: *RICS Hong Kong Residential Monitor – July 2024*, London: RICS, p1 - Chart 1.

* The Confidence Index is a composite measure capturing overall market momentum, encompassing variables on short-term price and sales expectations.

Read the latest RICS HK Residential Monitor: July 2024 in full.

- *RICS-Spacious HK Residential Monitor* is a monthly guide to the trends in HK's housing market. The report is available from the [RICS website](#) along with other surveys covering global housing, commercial and land markets, as well as construction industry.

Global Commercial Property Monitor (GCPM), Q2 2024

- Global sentiment towards CRE generally still cautious but MEA and parts of APAC continue to show a more upbeat trend

- The headline RICS Commercial Property Sentiment Index (CPSI) holds steady in the latest survey,
- MEA and parts of APAC remain much more upbeat but there is a little sign of a turnaround in China/HK at this point,
- Outlook for secondary offices and retail remains particularly negative in many market.

The headline RICS Global Commercial Property Sentiment Index (CPSI) for Q2 2024 was broadly unchanged from the first three months of the year at -11.

[Back to top](#)

The Global Commercial Property Monitor (GCPM) Q2 2024 continued.

Unsurprisingly, a similar picture is also evidence in the underlying components of this series, with both elements remaining close to the Q1 readings, the Occupier Sentiment Index (OSI) slipped very slightly from -8 to -10 while the Investment Sentiment Index (ISI) edged up from -13 to -11.

Although the gain in the latter was very marginal, it is worth noting (for the record) that it is now at its best level in two years (albeit still stuck in negative territory).

Perceptions Regarding Point in Cycle

The global data is as usual presented in Chart 6, but it is noteworthy that the same picture plays out when the numbers are disaggregated. The proportion of respondents who viewed the real estate market to be in a downturn globally stood at 34% (compared to 46% in Q4, 2023), as shown in Chart 6 (a), with a further 23% (compared with 23% in Q4, 2023) perceiving it to be at the bottom of the cycle.

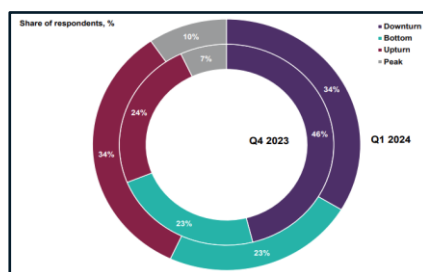
The proportion of respondents who view the real estate market to be in a downturn globally now stands at 37% (compared to 34% in Q1, 2024), as shown in Chart 6 (b), with a further 23% (compared with 23% in Q1, 2024) perceiving it to be at the bottom of the cycle.

Chart 6: Global Perceptions Regarding Point in Cycle

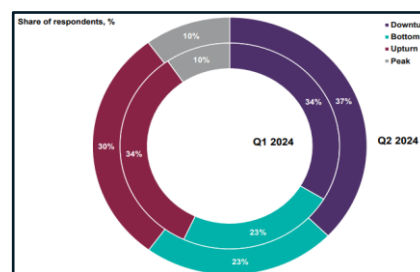
Share of respondents, %



(a) Q4, 2023 and Q1, 2024



(b) Q1, 2024 and Q2, 2024



© RICS 2024

Source(s): RICS Economics Research: RICS Global Commercial Property Monitors,

(a) Q1 2024, London: RICS, p4 - Chart 6, and (b) Q2 2024, London: RICS, p4 - Chart 6.

[Read the latest RICS Global Commercial Property Monitor, Q1 2024 in full.](#)

[Back to top](#)

Latest Statistics from the Office for National Statistics (ONS)

[UK economy latest](#) – A roundup of the latest data and analysis on the UK economy, business and jobs following Brexit and during the coronavirus (COVID-19) pandemic.

Construction Industry highlights

[Construction Industry highlights include](#) – **Construction output in Great Britain: July 2024**

- Short-term measures of output by construction industry in July.

What's covered in the latest bulletin?

- Monthly construction output is estimated to have decreased 0.4% in volume terms in July 2024; this follows an increase of 0.5% in June 2024.

- The decrease in monthly output come from falls in both new work (0.2%) and repair and maintenance (0.7%).

- At the sector level, monthly output fell in five out of the nine sectors in July 2024, with the main contributors to the monthly decrease coming from private commercial new work and private housing repair and maintenance, which fell by 2.4% and 1.7%, respectively.

[Read the full statistical bulletin, 'Construction output in Great Britain: July 2024.'](#)

Also:

[Latest release - Construction statistics, Great Britain: 2021](#) - A wide range of statistics on the construction industry. including the value of output, new orders by sector, number of firms and total employment, insolvencies and Output Price Indices.

Latest Statistics from HSE – Health and Safety Executive

Latest Key figures for Great Britain (2022/23)

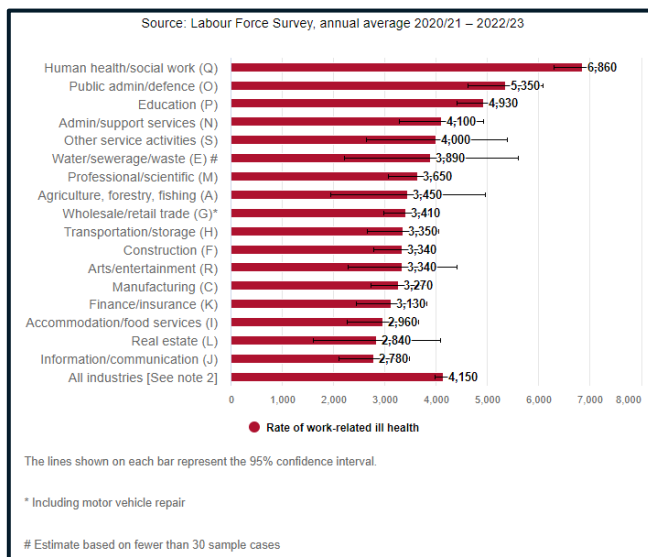
In 2022/23 an estimated 1.8 million workers were suffering from an illness they believed was caused or made worse by their work and 561,000 workers sustained 561,000 (N.B. 441,000 in 2020/21) workers sustained a non-fatal injury at work. [Source: Self-reports from the Labour Force Survey]. However, the risk of injury and work-related ill health varies across industry, being more likely in some industries than others.

The chart overleaf shows how the overall rates of self-reported work-related ill health and workplace injury vary between industry groups. While the chart shows the overall picture for each industry group, this may be masking differences at more detailed levels (for example, illness type or more detailed industry sub-groups).

[Back to top](#)

From the Health and Safety Executive (HSE), ‘Self-reported work-related ill health’, and covering ‘Construction’:

Rate of self-reported work-related health by industry for people working in the last 12 months (per 100,000 workers)
[Note 1], [Note 2], [Note 3]



© Crown copyright 2024

Note 1: Industry groupings based on the section level of the 2007 Standard Industrial Classification (SIC), **Note 2:** Restricted to injuries/ill health in current or most recent job. **Note 3:** These estimates are based on results from a survey and are subject to sampling error.

Source: HSE (2024) ‘Self-reported work-related ill health’, Bootle: HSE [online]. Available at: www.gov.uk/statistics/industry [accessed 26 July 2024]

Access further information on health and safety statistics from HSE – Health and Safety Executive.

[Back to top](#)



Built Environment Research

Latest Policy and Research from:

1) Savills Market Trends

- LATEST: Market Trends: Savills.com [September 2024]

Where is the equity to support a recovery?

- 2023 was a chastening year for many real estate investors. But despite the headlines, it is important not to get existential.

Last year (2023), global investment fell to its lowest level for more than a decade. The first half of this year (2024) was even weaker. But are we close to a turning point in the real estate cycle?

Source: Salmon O (2024) ‘Where is the equity to support a recovery?’ [online]. Available at: www.savills.com/impacts/market-trends/where-is-the-equity-to-support-a-recovery.html [accessed at 18 September 2024]

[Back to top](#)

Also: [Market Trends 2024](#)

- [Offices in equilibrium: Spotlight on London](#)
- [Offices in equilibrium: Spotlight on New York City](#)
- [Europe and Middle East investment outlook and tips](#)
- [US investment outlook and tips 2024](#), and
- [Asia Pacific investment outlook and tips 2024](#).

On the up: global real estate investment picks up for 2024

- 2024 should be a better one for global property investors, with a sustained bounce back expected. However, regional variations remain.



© Savills *Market Trends*, 2023

Real estate investors are looking forward to a more positive 2024, with recovery predicted across key parts of the global property market.

The outlook is for increased activity on the back of more attractive yields, with prime rents rising and repricing starting to re-align buyer and seller expectations.

Charts provided within this article (and including 'Outlooks for 2024' provided overleaf) are based on Savills' annual survey of Savills global research experts, who provide their investment outlooks and top tips for the coming year.

The outlook for global property is becoming more positive. Investment activity is expected to rise moderately or remain unchanged across most property sectors in Europe and the Middle East in 2024. Only a small minority of respondents expect activity to decline, so the worst of the contractions caused by rising interest rates appear to be behind us.

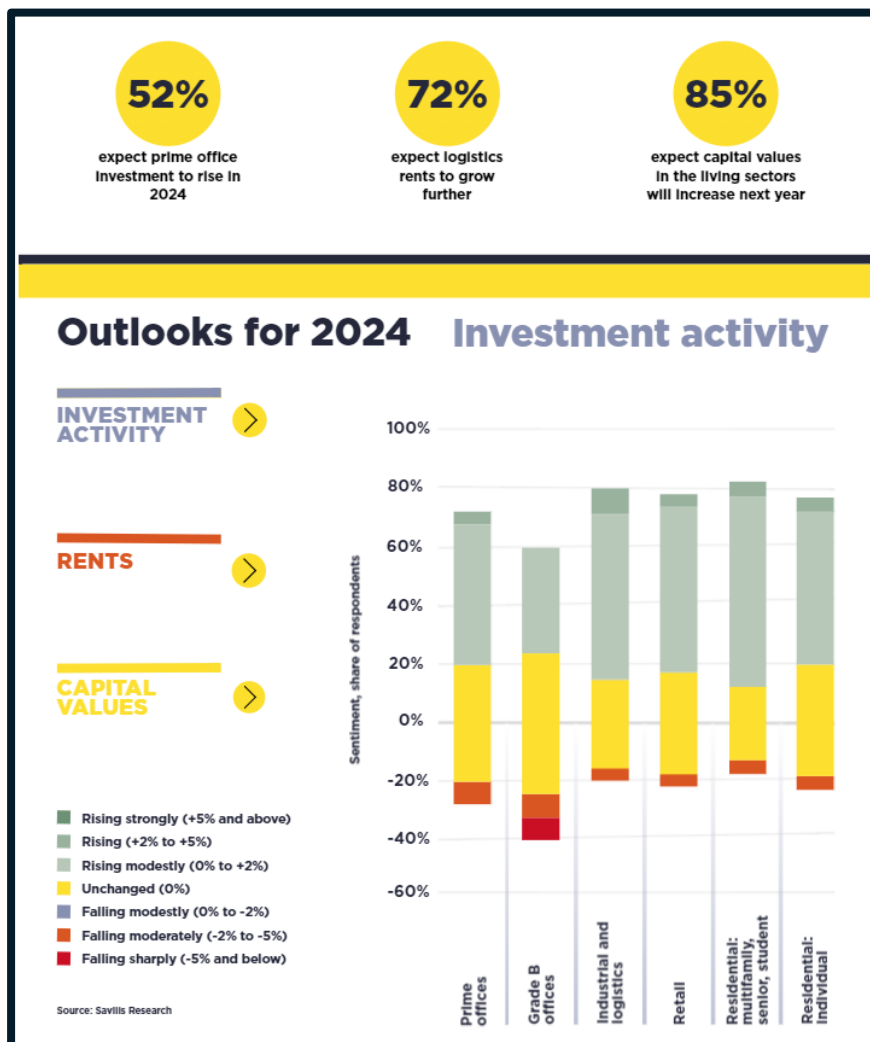
There is more optimism about the activity in residential markets, particular the multifamily sector, where demand outstrips supply in the many areas. Buoyed by strong fundamentals, the logistics property market also looks set to perform well in 2024.

It's a more mixed outlook for offices, however, especially outside the prime sector, where 16% of respondents expect investment activity to decline in 2024.

[Back to top](#)

Overall, 5% to 10% of respondents anticipate a strong rise in investment activity. Savills believe this will be driven primarily by prime purchases, alongside opportunistic investment in distressed assets that are expected to come to market.

Outlooks for 2024



© Savills Market Trends, 2023

Source: Tostevin, P., and Mitsostergiou, E, (2023) *Market Trends: On the up: global real estate investment picks for 2024*, Savills [online]. Available at: www.savills.com/impacts/market-trends/on-the-up-global-real-estate-investment-picks-for-2024.html [accessed 10 May 2024]

Access 'On the up: global real estate investment picks for 2024', in full.

Also: Market Trends – 'The total value of global real estate', in full.

Read Savills Investment tips and trends by region -

- [Read more EMEA tips](#), ○ [Read more Asia-Pacific tips](#)
- [Read more North America tips](#)

[Read Savills World cities prime residential forecasts](#)

[Back to top](#)

[Read the full Savills Impact Publication 'The Impact of Covid-19 on real estate', 2020'](#)

[Savills \(2020\) 'Welcome to Impacts 2020' Impacts, May, Savills \[online\]. Available at Savills.com](#)

2) Joseph Rowntree Foundation (JRF) -

- Inspiring Social Change: The Joseph Rowntree Foundation is an independent social change organisation working to solve UK poverty.

A framing toolkit: How to talk about homes

Part of [Talking about housing](#)

Related topics – Housing; Affordable housing; Housing Market

- You can download the framing toolkit to help tell a new story about homes. It contains essential guidance and tips for how to communicate to the public about the importance of decent and affordable homes as fundamental to a healthy, decent life.

The toolkit offers practical examples to bring to life the five framing principles for explaining about homes and the housing crisis. These frames are designed to support communicators and campaigners in the housing sector and beyond.

This FrameWorks UK toolkit is part of the Joseph Rowntree Foundation and the Nationwide Foundation's co-funded Talking about Housing project.

Access the JRF(2023) 'How to talk about homes – toolkit' (1.41 MB), in full.

Also gain access to the following free downloads that include: Research Findings and Related Links surrounding:

- **Housing**
 - Affordable Housing
 - Home Ownership
 - Housing Market
 - Private Rented Sector,
 - Social Housing
- **Society**
 - Emerging Futures,
- **Living Standards**
 - Cost of Living,
- **People**
 - **Child poverty**, and

UK Poverty:

JSR article entitled, 'UK Poverty 2022: The essential guide to understanding poverty in the UK' in full

[Back to top](#)

[JRF \(2022\) UK Poverty 2022: The essential guide to understanding poverty in the UK \(3.71 MB\).](#)

[Read the JSR report entitled, 'UK Poverty 2020/21' in full](#)

[Read the article 'UK Poverty 2019/20 Housing' in full](#)

[UK Poverty Statistics from the Joseph Rowntree Foundation -](#)

The latest UK poverty data, statistics and analysis from JRF's Analysis Unit. This **online toolkit** can be used to find information about poverty rates and related issues in the United Kingdom.

[JRF Spring Budget 2021 analysis](#)

[JRF Analysis of the 2020 Spending Review](#)

3) The Smith Institute

- The Smith Institute is a leading independent 'think tank' which promotes progressive policies for a fairer society. They provide a high-level forum for new thinking and debate on public policy and politics. Through research, reports, briefings, monographs, events, lecturers, education, and their website, the Institute offers a platform for thought leadership on a wide range of topics.

Making retirement living affordable: the role of shared ownership for older people

APPG on Housing and Care for Older People (2023)

The Smith Institute supported the All-Party Parliamentary Group (APPG) on Housing and Care for Older People inquiry and report into the role of shared ownership housing for older people.

The report from the Inquiry Panel highlights and evaluates the key issues concerning the development of the market for shared ownership for older people, with particular regard to the government's current Older People's Shared Ownership (OPSO) scheme. It then, in respective sections on the key issues, comments on the current situation and set out recommendations for improving the offer and supporting the growth of the sector.

[Read the full piece of research, 'Making retirement living affordable: the role of shared ownership housing for older people.'](#)

Temporary accommodation at crisis point: Frontline perspectives from London and Greater Manchester

Farrelly, M., and Hackett, P, The Smith Institute (2022)

- This report examines statutory homelessness and temporary accommodation (TA) in London and Greater Manchester.

[Back to top](#)

It is a public policy facing report to shed light on what is currently happening with the supply and demand of TA and to open up a wider discussion around what can be done to improve the situation going forward. It is not intended as an academic or technical comparative analysis of the different boroughs homelessness activities.

The findings and evaluations are based on extensive desk research and one to one interviews with housing officers and other housing professionals, housing providers, investors, politicians, experts, homelessness charities and campaigners. We also hosted two virtual roundtable discussions in the Spring of 2022 on Greater Manchester, chaired by Paul Dennett, Salford City Mayor and Deputy Mayor for Greater Manchester, and on London, chaired by Tom Copley, London Deputy Mayor for Housing and Residential Development.

Where relevant we have highlighted what specific boroughs are doing and have included examples of best practice and new ideas and approaches. We have laced the report with anonymised quotes from the interviews and made reference to the work of the GLA, London Councils, GMCA and other relevant organisations. We have evaluated the data and opinions and on the basis of what we've offered a series of talking points and policy recommendations. The concept of a TA system as used in this report combines the boroughs' statutory duties under the Homelessness Reduction Act (2017) and their responsibilities under relevant housing legislation and regulations.

The report covers the GLA and the 32 Greater London boroughs and the GMCA and its boroughs (Bolton, Bury, City of Manchester, Oldham, Rochdale, Salford, Stockport, Tameside, Trafford, Wigan). The data was drawn mainly from DLUHC, GLA, GMCA and other official statistics, as well as information collated by the boroughs, housing charities and professional bodies.

[Read the full piece of research, 'Temporary accommodation at crisis point: Frontline perspectives from London and Greater Manchester.'](#)

Understanding the impact of almshouse charities in the pandemic.

Hunter, P., The Smith Institute (2022)

- This independent study, commissioned by The Almshouse Association, seeks to understand the impact of the pandemic on almshouse charities and their residents, examine the difference almshouse charities have made, identify the lessons that can be drawn from the past two years; and highlight challenges the sector faces going forward.

[Read the full piece of research, 'Understanding the impact of almshouse charities in the pandemic.'](#)

[Back to top](#)

Housing allocations and the vacancy chain: how coordinating chains can better meet housing needs and tenant choice.

The Smith Institute (2022)

- This report is an exploration into the factors influencing vacancy chains in London's social housing, covering general needs stock held by councils, ALMOs and housing associations, with interplays from supported and specialist housing. The report is in five sections, including a set of recommendations.

[Read the full piece of research, 'Housing allocations and the vacancy chain: how coordinating chains can better meet housing needs and tenant choice.'](#)

Pulling at the Roots: A report by the Southwark Council Housing Resident's Working Part on understanding and mitigating the economic and financial impacts of Covid for residents of council housing in Southwark

Southwark Council Housing Residents' Working Party (2021)

The Smith Institute provided support for the Southwark Council Housing Residents' Working Part on understanding and mitigating the economic and financial impacts of Covid for residents of council housing in Southwark.

To get a better understanding the Council helped establish a Council Housing Residents' Working Party (RWP), comprising tenants and homeowners in June 2021. The Working Party was tasked to examine the economic and financial impacts of the COVID pandemic, including paying special attention to who has been worst affected, what support the Borough's council housing residents have had, and what is needed to improve this morning forwards.

The RWP took oral and written evidence from Council officers, housing and debt experts, and representatives from the community and voluntary sector, considered government and Council held data on rent arrears and the impact of Covid; and conducted its own survey of over 1,800 tenants and leaseholders.

[Read the full piece of research, 'Pulling at the roots: A report by the Southwark Council Housing Residents' Working Party on understanding and mitigating the economic and financial impacts of Covid for residents of council housing in Southwark.'](#)

A Just Transition: Ensuring responsible investment for a just transition to net zero.

The Smith Institute (2021)

The Smith Institute supported the All-Party Parliamentary Group for Local Authority Pension Funds inquiry into 'Responsible investment for a just transition.'

[Back to top](#)

This report is based on evidence sessions and written submissions to that inquiry from investors, industry, academics, community groups, trade unions, and other non-government organisations. The inquiry report seeks to inform politicians, policymakers, stakeholders and the public on the roles and responsibilities that investors can play, with the support of their members and government, in enabling a just transition to net zero carbon emissions.

[Read the full piece of research, 'A Just Transition: Ensuring responsible investment for a just transition to net zero.'](#)

Publications – The Smith Institute

[- The Living Wage Dividend: maximising the local economic benefits of paying a living wage.'](#)

[- Planning for the recovery and the shift towards homeworking: implications for poverty in outer London.](#)

[- A National Housing Conversion Fund: buying properties to boost affordable housing supply.](#)

[- Falling behind: The impact of Universal Credit on rent arrears for council tenants in London.](#)

[- Making Housing Affordable after Covid-19: A follow up report from the Affordable Housing Commission.](#)

[- Making Housing Affordable Again: Rebalancing the Nation's Housing System: The final report of the Affordable Housing Commission.](#)

4) CBRE Insights and Research

The CBRE Research blog showcases a variety of informed viewpoints, spanning all major property sectors that include –

- **Offices** – Discover up to the minute and future looking trends in the Office sector for occupiers, landlords, investors and developers
- **Retail** in detail,
- **Industrial** – CBRE 'shed' light on all things industrial,
- **Residential** – CBRE's 'house' vide on all things residential, and
- **Investment** – addressing the challenges and opportunities facing commercial real estate property investors

[Access the CBRE website: Insights and Research](#)

[Access 'Sustainability in real estate decision-making: views from the coal face.'](#)

LATEST: [CBRE \(2024\) 'UK Real Estate Market Outlook 2024'](#)

[Back to top](#)

5) CABE – Chartered Institute of Building Engineers

Latest news: Fire Safety Act and Regulations

- **Changes to Building Regulations for fire safety in specific types of buildings**
 - On 1 June 2022, the Department for Levelling Up Housing and Communities (DLUHC) announced the outcome of its consultation on extending controls on use of combustible materials, and additional fire safety measures in higher risk buildings. These will come into force on 1 December 2022.
 - [Further information on the Changes to the Building Regulations](#) and
 - [More details can be found in the Amendment Document issued by DLUHC](#)
- **Coming into force of Schedule 1 of the Fire Safety Act relating to Fire Risk Assessments**
 - The Fire Safety Act 2021 will come into force in 2023, but ahead of this Section 1 – Premises to which the Regulatory Reform (Fire Safety) Order (FSO) applies and Section 3 – Risk-based guidance about the discharge of duties under the FSO of the Act commenced on 16 May 2022.
 - [Fire Safety Act Commencement Prioritisation Advice](#)
 - [Information on commencement of Section 1 and 3 of the Fire Safety Act](#)
 - [Fire Risk Assessment Prioritisation Tool](#)

Key publications from CABE

Setting the Bar – a blueprint to improve competence for those working on higher risk buildings and drive culture change has been set out by a cross-industry group representing more than 150 organisations, including CABE, in the fire and built environment industries. [Access *Setting the Bar* – Final Report](#)

Also: [Access *Safer people, safer homes: Building Safety Management*](#)

[Access the Chartered Association of Building Engineers for further information.](#) and [Access *Building Engineer* website](#)

6) RICS – Royal Institution of Chartered Surveyors

- RICS recognise the huge importance of property, land, construction and the built environment. Through their market surveys and research, they aim to advance the thinking of the profession and raise the profile of the industry.

Note: Latest research published by RICS is covered earlier within *Knowledge Foundations* and under **Other News > RICS Market Surveys**.

[Back to top](#)

As of **September 2024**, the [latest news & insights](#) include:

- **News, Insights & Opinion –**
 - [Rates Ease, Keys, Please: UK Housing Market shows promise moving into Q4](#) (09/24)
 - [Leasehold Reform: What next for the sector?](#)
 - [Building Safety Act FAQs and Information](#) (07/24)
- **Digital Transformation / Tech Partner Programme –**
 - [Flood Risk Impact on UK Commercial Properties](#)
 - [Using AI across the built environment](#),
 - Advancements in drone technology, and
 - Unlocking Operational BIM Benefits
- **Market & Geopolitics –**
 - The outlook for office markets: Towards a two-tiered system?
- **Fire Safety –**
 - [Cladding External Wall System \(EWS\) FAQs](#) (5/24),
 - [RICS Fire Safety Hub](#) – read the latest guidance and development from RICS in the area of fire safety,
- **Also: [The future of BIM](#)** – An overview of what BIM is and how it is evolving.

7) CIOB – Chartered Institute of Building

The quality of the built environment affects every member of society. As a professional body that represents the leaders and managers who work at every stage of the lifecycle of a construction project, The CIOB seek to influence government, industry and other stakeholders around the world with the aim of promoting the construction management discipline and addressing the challenges that the sector faces.

As of **September 2024**, the latest CIOB Policy and [Research](#) incl.

Future of Construction

- **Latest Research: CIOB Artificial Intelligence (AI) Playbook 2024 (06/24)**
- *Building Opportunity: Employing People with Criminal Convictions in Construction* (03/24)
- *Modern Methods of Construction: barriers and benefits for Irish housing* (01/24)
- *The Real Face of Construction 2023* presents a picture for each economic region of the United Kingdom and Ireland, highlighting how the construction industry has performed.

Quality

- Research: New-build housing – how regulation can improve the consumer journal (12/23)

Economic and Social Impact

- Research: *Balancing the tax system with climate goals* (10/23)

Ethics research

- *Understanding Mental Health in the Built Environment*; and *The State of Well-being in the Construction Industry*.

[Access the Chartered Institute of Building's Policy and Research website](#)

[Back to top](#)

8) House of Commons Library, 9) the House of Lords Library and 10) the Parliamentary Office of Science and Technology (POST)

About the House of Commons Library - The House of Commons Library is a research and information service based in the UK Parliament. Their impartial analysis, statistical research and resources help MPs, and their staff scrutinise legislation, develop policy, and support constituents.

Watch this quick video to find out how the House of Commons Library works

Source: UK Parliament (2020) 'How the House of Commons Library works', YouTube [video]. Available at: youtube.com.

As of November 2022, the House of Commons Library updated their website that is now broken down into the following sections or subject areas:

Services that include **Research**, Resources, Training & Events,

Brexit and UK-EU relations – Research covering key Brexit moments negotiations the EU and its institutions and UK-EU relations after Brexit.

Coronavirus – Research relating to Covid-19 from the Commons Library and other parliamentary research services.

Economy, Business and Transport – Research on the economy, business transport and work and incomes. Also includes Economic Indicators and monthly economics updates.

Home Affairs incl. Research on communities, crime, family & civil law, justice, immigration, security, and culture, media & sport,

Parliament & Elections that include devolution, elections, government, parliament, and local government,

Science, Environment and Technology that include **Energy, Environment, Climate Change, Sciences, Local Data**

Social Policy that include **Education, Families & Social Services, Health, Housing & Planning, and Welfare & Pensions,**

World Affairs that is broken down into Africa, Americas, Asia Pacific, Defence, Europe, Institutions, and Middle East, and more.

As of **September 2024**, the latest House of Commons Library, **Research publications** incl.

1. Research in brief: Quick reads for the 2024 Parliament,
2. Research for Commons business,
3. **Leasehold reform in England and Wales: What's happening and when?**

Review House of Commons Library, Research for this week

As of **September 2024** the latest **House of Commons Research:**

[Back to top](#)

Under '**Education**' and within 'Social policy,' the top research briefings incl.

1. **Degree apprenticeships** – This briefing explains what degree apprenticeships are, how they are regulated and funded, and how many people start one.

Also:

2. **International students in UK higher education**
3. Student mental health in England: Statistics, policy, and guidance,
4. Suicide prevention: schools and colleges,
5. Higher education finances and funding in England, and
6. **Higher education around the world: comparing international approaches and performance in the UK** – This briefing compares how higher education works around the world with the UK. It considers systems, student numbers, funding, access and participation, and research.

Under '**Housing and Planning**' and within 'Social policy,' the top research briefings incl.

1. Enterprise Zones,
2. Environmental standards for new housing,
3. General Debate on building safety and resilience,
4. Local growth funds,
5. Housing Market: Key Economic Indicators,
6. Building regulations and safety,
7. Planning for nationally significant infrastructure projects, and
8. Revocation of planning permission.

Under '**Energy**,' '**Environment**' and '**Climate change**,' and within 'Science, Environment and Technology' include:

1. Environmental standards for new housing,
2. Great British Energy Bill 2024-25,
3. Gas and electricity prices during the 'energy crisis' and beyond,
4. Depopulation in rural areas,
5. UK priorities for COP29.

[House of Commons Library search](#) on '**construction industry**' identifies 18 key documents, that incl. 'Taxation in the construction industry', 'CITB – Construction Industry Training Board Levy', and '**The construction industry: statistics and policy, Dec. 2019**' -

Abstract: Construction industry – employment, new orders, output. [Construction 2025](#), [The Farmer Review](#) and the [Construction Sector Deal](#) (part of the government's [Industrial Strategy](#)).

Key statistics – In 2018, the construction industry contributed £117 billion to the UK economy, 6% of the total.

Economic output in 2018 was slightly down on 2017, the first fall since 2013.

There are 2.4 million construction industry jobs in the UK in Q2 2019, 6.6% of all jobs. There are more construction jobs now than at any time since 2007, although throughout this period, roughly the same proportion of jobs have been in construction.

The construction industry is unusual because of the high proportion of self-employment in the sector – 36% in Q2 2019, compared to the average for the whole economy of 13%.

New orders to the construction industry were worth £61.7 billion in 2017. This is 13% down in 2017, the first fall since 2011. New housing orders accounted for 35% of all construction orders, commercial orders accounted for 25% and infrastructure orders accounted for 19%.

[Access and download the full report, 'Construction industry: statistics and policy'](#)

[Back to top](#)



e-Journal Review

Built Environment Industry Journal titles reviewed by UCEM e-Library

MODUS

MODUS - the RICS magazine that brings you the latest news and views, expert advice and in-depth features spanning the breadth of the surveying profession around the world.

In the latest digital **MODUS** (**September 2024**), '**Disney vs DeSantis: does self-governance work?**'. – A clash of interests in 2022 between Disney World and the governor of Florida led to a long-running legal battle covering urban planning, economics and state authority.

Subject Terms/Keywords: Commercial property; Dispute management; Dispute resolution; Land and resources; Land rights; and Legal

Latest articles within *Modus*:

- '**Why later living design must prioritise social wellbeing**' – Focusing on the social element of ESG in housing for seniors creates spaces that encourage interaction and improve the wellbeing of residents.

Subject Terms/Keywords: Housing; Infrastructure; Infrastructure and services; property finance and investment; Residential; and Wellbeing.

- '**How Luton Town revamped its stadium in just three months**' – The football club's rags-to-riches promotion to the Premier League demanded an equally inspirational upgrade to its dilapidated Kenilworth Road stadium, within a tight deadline.

[Back to top](#)

Subject Terms/Keywords: Commercial property; Maintenance and repair; Planning and development; Projects and people; Quantity surveying and construction; and Sustainability.

- **'Our bursary programme will broaden the talent pool'** – By helping new entrants from a wide range of backgrounds find their feet in surveying, we can grow the profession, says RICS President Tina Paillet FRICS.

Subject Terms/Keywords: APC; Building surveying; Diversity and inclusion; Learning and development; Planning and development; and Research.

- **'Stephen Radford MRICS: the pub surveyor'** – Buying, selling and valuing pub businesses sounds like a dream job but it's a challenging sector that requires specialist knowledge of a much-loved asset class.

Subject Terms/Keywords: Commercial property; Commercial valuation; Corporate real estate; Projects and people; and Valuation.

- **'How much are you paid – and should you get more?'** – Which sectors offer the best salaries and why is there still a gender pay gap? The annual Macdonald & Co Salary, Rewards and Attitudes Report provides answers.

Subject Terms/Keywords: Commercial property; Diversity and inclusion; Economics; Research; Residential; and Running your business.

- **'The secret museum: preserving Ron's Place'** – Ron Gittins turned his rented Birkenhead flat into a shrine to Roman and Greek historical imagery and sculpture. But saving his work after he died was a huge challenge.

Subject Terms/Keywords: Building surveying; Ethical practice; Heritage and conservation; Housing; Property finance and investment; and Residential.

Also:

- **'Urban swimming: how to make a splash in the city'** – From restored 1930s lidos to tidal pools and swimmable harbours, cities around the world are rediscovering a love of outdoor swimming and its myriad benefits.

- **'Why is UNESCO World Heritage listing so Eurocentric?'** – Of 1,199 World Heritage sites, nearly half are in Europe or North America. This could show a degree of bias or suggest that not everyone is convinced by the valuer of the designation.

- **'What were the most popular stories of 2023 on Modus?'** – Topics related to climate change and architecture have it into our top 10 most-read articles in 2023.

[Back to top](#)

The Top ten most read articles include the following:

1. Which real estate sector pays the most?,
2. Future-proof: retrofitting commercial property,
3. Brutal or beautiful? The Barbican Estate,
4. Alexandra Revell MRICS: renovating the Royal Albert Hall,
5. At your convenience: the importance of good toilets,
6. From soldier to surveyor,
7. Alan Bainbridge FRICS: transforming the BBC's estate,
8. Buildings that elevated cities: The Shard, London,
9. What are the most important features of office design?, and
10. How to ensure biodiversity net gain in developments.

Subject Terms/Keywords: Commercial property; Commercial valuation; Corporate real estate; Economics; Residential; and Sustainability,

and more.

Please note: In addition to *MODUS*, RICS publishes other journals that are free to view online incl.

1. **Construction Journal** - The journal helps **quantity surveyors** and project managers with the technical and professional aspects of their day jobs and keep up to date with developments and practical matters in the profession. It covers topics including contracts, cost management, procurement, construction law and regulations, communications, and project management skills.
2. **Built Environment Journal** (Incl. Building Surveying, Building Conservation, and Building Control) - Coverage keeps practitioners in the disciplines of building surveying, building control, and building conservation up to date on the latest developments, products, standards, and guidance.
3. **Land Journal** - The journal emphasises the crossovers in these practice areas and their global nature, with articles contributed by experts from all over the ..
4. **Property Journal** - The journal contains high-quality technical material in clearly defined sections, as well as some material that crosses professional groups to reach a wider audience.

Further information can be accessed via the RICS Website, Home > **News & Insights** > **RICS Publications** [online].

The Heritage Alliance's (HA) **Heritage Update**, the latest edition, **September 2024 - Issue 526** focusing on – Heritage, Creative Industries, Arts, and Voluntary Sectors incl. Heritage Debate 2024 and Heritage Day 2025; Heritage Open Days' 20th Anniversary Celebrations; and Housing Secretary Answers Departmental Questions.

Also: **Engaging Digital Audiences**, available on the **HA project portal** - access webinars on diversifying digital audiences, how to plan great webinars, how to use exceptions to copyright in

[Back to top](#)

your digital activities & how to encourage your audience to create user-generated content.

Institute of Workplace and Facilities Management (IWFM)

Facilitate, - This latest **September/October 2024** edition of *Facilitate* focuses on the new Chancellor's Autumn Budget that will undoubtedly influence workplace and facilities management.

Read more related articles on the [IWFM Insight webpage](#).

Construction Management (CM) and **Global Construction Review** (GCR) are magazines of the Chartered Institute of Building (CIOB). **Note:** Latest articles from both journals are covered earlier within this issue of *Knowledge Foundations*.

Subscriptions available via the VLE e-Library include:

Construction Information Service (CIS) Insight 2024. The Latest Edition [**September 2024**] focuses on – NBS Article 09/2024, **Sustainable Futures UK Report 2024**, and covers: ▪ Insights from industry professionals' perspectives, ▪ Sustainable outcomes and the barriers we face, and ▪ The future of sustainability policy and the role of specification and project information.

- The *Sustainable Futures UK Report 2024* results from a comprehensive survey conducted by NBS in association with the Sustainable Energy Association and supported by organisations such as Glenigan and RIBA.

Taylor and Francis Online and include the following e-Journals:

- *Construction Management and Economics*,
- *Building Research and Information*, and
- *Journal of Property Research*

Henry Stewart Publications and include the following e-Journals:

- *Building Survey, Appraisal and Valuation*,
- *Journal of Urban Regeneration & Renewal*, and
- ***Corporate Real Estate***.

Corporate Real Estate Journal is the essential peer-reviewed, professional journal for corporate real estate executives.

Each quarterly 100-page issue publishes high quality articles and real case studies on new thinking, strategies, and techniques in corporate real estate. It cuts through the deluge of information facing corporate real estate professionals to deliver content, which is authoritative, practical, and relevant by providing a blend of genuine thought-leadership – which expands what can be achieved with corporate real estate – with detailed, actionable advice and 'lessons learned' from industry peers.

In-depth articles and case studies scheduled for the new volume of *Corporate Real Estate Journal* are provided overleaf.

[Back to top](#)

In-depth articles and case studies scheduled for the new volume, **Vol 14, Number 1 (2024-2025)** of ***Corporate Real Estate Journal*** incl.

Vol 14, Number 1 (2024-2025)**Featured Articles**

1. People, performance and place: How using perceptive and cognitive data can create inspiring and collaborative workspace that enable growth and innovation.
2. The role of commercial real estate in shaping our carbon future.
3. Modern lease monetisations: How to capitalise on market arbitrages to significantly reduce occupancy costs.

Vol 13, Number 4 (2023-2024)**Example practice papers include:**

1. Lease audit: Optimising occupancy expense savings.
2. How to develop an integrated approach to designing, building and managing facilities.
3. Accounting for shrinking real estate footprints: Applying lease termination, abandonment and impairment accounting rules in the real world.
4. Sensor data: Understanding how real estate occupiers can transform their space and generate effective outcomes.

Vol 13, Number 3 (2023-2024)**Example practice papers include:**

1. Reshaping the corporate landscape: Navigating changes in real estate strategies.
2. Integrating cyber into new construction and commissioning across asset classes.
3. Best practices for supplier debriefs.

Case Studies

1. Funding and implementing a lease compliance programme.
2. Tripple bottom line, environmental, social and governance and net zero in commercial real estate.
3. The Colorado State Government 'Reduce Our Footprint' initiative.

Vol 13, Number 2 (2023-2024)**Example practice papers include:**

1. The pitfalls of a post-COVID-19 portfolio implementation,
2. Beyond the spend: How corporate real estate is a key driver for elevating diversity in the industry, workforce and communities,
3. After the pandemic: Contemplating the future of central office buildings,
4. Implementing an integrated workplace management system at a major university: Part 1,

[Back to top](#)**Vol 13, Number 1 (2023-24)**

- **Case Studies –**
Cutting the cord: How and why HERE Technologies fired their service provider and took real estate in-house (and whether other end users should too). **Also:**
- Delivering inclusive workplace experiences to support corporate strategy, and
- Reimagining real estate and facilities management outsourcing: A bp and JLL case study.

Also:

Vol 13 (2023-24) of [*Corporate Real Estate Journal*](#)

Vol 12 (2022-23) of [*Corporate Real Estate Journal*](#)

Vol 11 (2021-22) of [*Corporate Real Estate Journal*](#)

Vol 10 (2020-21) of [*Corporate Real Estate Journal*](#)

Vol 10 (1) (2020-21) Special issue: COVID-19, CRE and workplace response

Vol 9 (2019-20) of [*Corporate Real Estate Journal*](#)

HSTalks

© Henry Stewart Talks Ltd 2022

HSTalks is a member of the Henry Stewart Group which has been a leader in providing graduate and continuing professional education in science, business, and management for over 40 years through peer reviewed vocational journals (such as the *Corporate Real Estate Journal*), conferences and online education for medical schools, business schools, universities, government, and commercial enterprises in over sixty countries around the world.

Henry Stewart Talks Ltd (HSTalks) provides specially prepared, animated, online, audio-visual lectures, seminar-style talks and case studies that accompany the 'Business & Management Collection' of e-Journals that the UCEM e-Library subscribes to.

Educational Journal titles and Open Educational Resources (OERs) reviewed by UCEM e-Library

[*Open Praxis*](#) – peer-reviewed open access scholarly journal focusing on research and innovation in open, distance and flexible education. It is published by the [International Council for Open and Distance Education – ICDE](#).



This work is licensed under a

[Creative Commons Attribution 3.0 Unported License \(CC BY 3.0\)](#).

[Back to top](#)

This latest *Open Praxis* special issue **Vol 16(3)** includes nine research papers, two innovate practice articles and one book review.

Keywords: open education, distance education, e-learning, online education, quality, internationalisation, autonomy, personality traits, scale, textbook, engagement, accessibility, inclusion.

Editorial: Introduction to *Open Praxis Vol 16(3)*

'Why Generative AI Literacy, Why Now and Why it Matters in the Educational Landscape? Kings, Queens and GenAI Dragons'.

Research articles include:

1. 'Advancing Critical Data and AI Literacies Through Authentic and Real-World Assessment Design Using a Data Justice Approach'.
2. 'A Hopeful Future? Preparedness and Optimism-Pessimism About the Future of Post-secondary Education',
3. 'Towards a Competence Framework for Open Scholars: Acknowledging the Dearth of Epistemic Competences',
4. 'Open Educational Resources in K-12: Common Predictors for Creating and Reusing Fall Short',
5. 'Understanding Formal Localization of OER: Remixing United Nations Human Rights Resources in Ghana',

Innovative practice articles

1. 'Behind the Scenes: A Critical Perspective on GenAI and Open Educational Practice'.

Book review(s):

1. 'Book Review of [Learning Together Again: An Unorthodox Review of Dave Cormier's Learning in a Time of Abundance](#) - by Metaxas C.

Source: Cormier D (2024) *Learning in a time of abundance*. John Hopkins University

Press. <https://doi.org/10.56021/9781421447797>

Keywords: Independent learning, scholarly publishing, knowledge sharing, open access, accessibility in education, and independent researchers.

European Journal of Open, Distance and E-Learning

(EURODL), an electronic, multi-media, open access journal. It publishes the accounts of research and presents scholarly work and solid information about open, distance, online and e-learning in technology-enhanced education and training in its most inclusive definition.

Published in the **Latest Issue of EURODL**, **Vol. 26 (2024): Issue 1 (March 2024)**, article titles include:

- 'Critical factors affecting student satisfaction in a distance learning environment.' and
- 'The effect of digital literacy on student identity and inclusion: insights from the University of Western Macedonia.

[Back to top](#)

been specifically designed for the online environment.

Also, in EURODL – Articles by UCEM staff, incl.

- 'Transcript and Accessibility: Student Views from Using Webinars in Built Environment Education,' Vol 23(2), and
- 'Massive Open Online Courses and Economic Sustainability,' by Liyanagunawardena, T.R. [et al.] UCEM, Vol 18(2). Also,
- 'Open Badges: A Systematic Review of Peer-Reviewed Published Literature (2011 – 2015)', by Liyanagunawardena, T. R., Scalzavara, S [et al.], UCEM, Vol 20(2)

Online Learning Journal (OLJ), the official journal of the Online Learning Consortium (OLC)

The **Online Learning Consortium's** premier journal dedicated to the development and dissemination of new knowledge at the intersection of pedagogy, emerging technology, policy, and practice in online environments. **Note:** OLJ is indexed in the **Web of Science** (ESCI) with a **Journal Citation Indicator** of 1.32, and **Scopus** citescore of 5.7 for 2021, ranking it in the 93rd percentile of all journals in **Education**. OLJ is ranked among the top 3% of all open-access journals in the field of Education.

The OLC **Online Learning Journal**, latest edition,

OLJ 2024, Vol 28(3)

Published: 2024-09-01

Editorial - Introduction to OLJ Volume 28(3).

Online and Blended Learning in the Age of Generative AI

- The Untold Story of Training Students with Generative AI: Are We Preparing Students for True Learning or Just Personalization?

Example papers include:

1. The Anticipated Impact of Artificial Intelligence on US Higher Education: A National Study.
2. Using AI-generative tools in tertiary education: Reflections on their effectiveness in improving tertiary students' English writing abilities.
3. Integrating Generative AI in University Teaching and Learning: A Model for Balanced Guidelines.
4. Harnessing Generative AI (GenAI) for Automated Feedback in

Section II:

2024 OLC Conference Special Issue –

Introduction to the Special Issue: Select Papers Presented at the 2023 OLC Accelerate Conference and the 2024 OLC Innovate Conference.

Section II:

5. It Helped Push Me Through The Class’: Community College Student Perceptions of the Role of Instructor Immediacy Behaviours in Completing an Online Course.
6. Student Perceptions of Effective Educators in Online Learning.
7. “Never Met Them in Person, But We Help Each Other”: Black Women’s Experiences in Online Undergraduate Engineering Programs,
8. The Impact of Online Learning during the Covid-19 Pandemic on Academic Outcomes for Newly-Struggling High School Students, and more.

[ISSN: 2472 – 5730]

[Higher Education Pedagogies](#), an Open Access Journal.

[Henry Stewart Publications](#), Management e-Journal collection incl. *Journal of Education Advancement & Marketing*.

[The Open Education Research Hub](#) (OER Hub), and

[The Directory of Open Access Journals](#) (DOAJ)

[Back to top](#)



e-Book Review

Managing Diversity and Inclusion in the Real Estate Sector

Clack A and Gabler J (2019) *Managing diversity and inclusion in the real estate sector* [e-book], Oxon: Routledge. e-ISBN-13: 9780429428975

Managing diversity and inclusion in the real estate sector is the first to place D&I at the centre of successful real estate and construction organisations. It provides guidance to, and most importantly, actions for professionals in the sector who want to make D&I an inherent part of the culture of their organisation. This book has been written to bring the sector up to speed with what D&I is all about and how a D&I strategy can be implemented to secure future success.

Real Estate: The Basics

Forsyth, J. and Wilcox, J. (2022) *Real Estate: The Basics*, Oxon: Routledge. ISBN-13: 9780367725433

Real Estate: The Basics provides an easy-to-read introduction to the core concepts of the industry to students new to the subject or professionals changing direction within the sector. The book encapsulates the key 'need to know' aspects of Real Estate including the 'language' of real estate; its value and contribution to countries' GDP; its primary purpose, whether as an asset or as a resource; valuation concepts; asset classes; basic concepts of land law, and of landlord and tenant law; the increased role and

[Back to top](#)

importance of sustainability and technology; and an overview of the wide range of professionals involved in the industry.

Studying at a Distance

Talbot C (2010) *Studying at a Distance* [e-book]. Maidenhead: Open University Press, e-ISBN-13: 9780335238057

This essential guide provides practical help and support for those who have not previously studied at a distance and is ideal for students returning to study after a break. It covers fundamental issues such as motivation, goal setting, time management and coping strategies. Additional coverage in this edition includes specific information on the use of new technologies in distance learning; detailed coverage of referencing, citation, and plagiarism; description of using mind maps and other techniques for planning and writing essays or reports; support for disabled students, particularly those with dyslexia; and a further resources section.

Adding some Tec-Variety: 100+ Activities for Motivating and Retaining Learners Online

Bonk C J, and Khoo E R (2014) *Adding some Tec-Variety: 100+ Activities for Motivating and Retaining Learners Online* [e-book]. CreateSpace Independent Publishing Platform, e-ISBN-13: 9781496162724. [Access the free online book Adding Some TEC-VARIETY](#)

Please note: The authors have made an online version of this work available under a [Creative Commons Attribution-Non-Commercial-Share-Alike 3.0 Licence](#).

The Solo Librarian: A Practical Handbook

Roper, L. (2024) *The Solo Librarian: A Practical Handbook* [print book and eBook], Cambridge MA: Chandos [online]. Further information is available at: <https://shop.elsevier.com/books/the-solo-librarian/roper/978-0-443-15795-0> [accessed 5 July 2024]

Actively diversifying the content to increase its relevance to an international audience, this practical handbook provides a one-stop-shop with accompanying time-saving templates that can be easily adapted to help aid the daily activities and processes often faced by those working in information, knowledge, libraries and related disciplines.

Benchmarking Library, Information, and Education Services

Roper, L. (2023) 'Benchmarking the impact, quality, and value of an academic online e-Library', in Baker, D., Ellis, L., Williams, C. and Wragg, C. (eds) *Benchmarking Library, Information, And Education Services* [print book], Cambridge MA: Chandos

Directory of Open Access Books (DOAB)

The primary aim of DOAB is to increase discoverability of Open Access books.

[Access the Directory of Open Access Books \(DOAB\)](#)

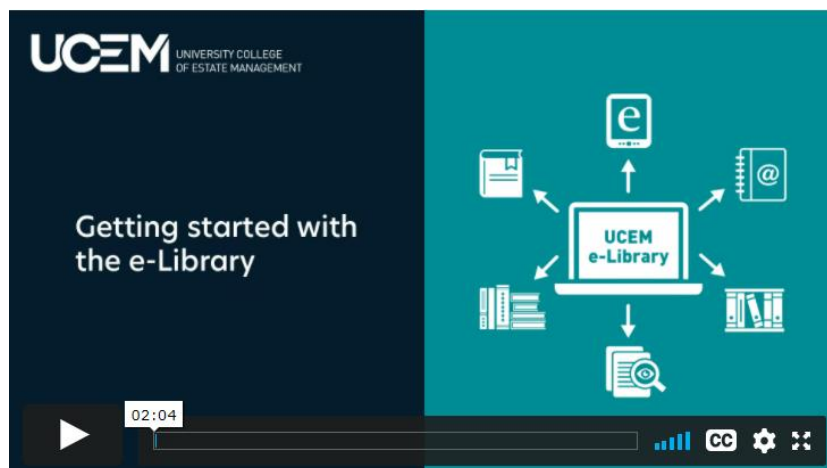
[Back to top](#)

UCEM e-Library Portrait

The aim of the e-Library

The aim of the e-Library is to:

- disseminate information, share good practices, and promote current awareness to assist in underpinning written work,
- add value and depth to our students' study experience, and
- support the continuing professional development of all those working and aspiring to work in the built environment.



© UCEM 2024

Source: UCEM (2023) *Getting started with the e-Library* [video], YouTube. Available at: www.youtube.com/watch?v=iEg8DFUFifY&t=5s [accessed 26 July 2024].

At UCEM, we recognise that in an information-rich age and when everyone is pressed for time, it can be a challenge to find good-quality information when you need it.

Whether you are obtaining a qualification, undertaking CPD or researching a particular field, having access to a well-equipped library is essential.

The UCEM e-Library (accessed through the Virtual Learning Environment - VLE) is a comprehensive and valuable online resource, enabling students to access a wealth of subject-specific and credible information to support them throughout their studies and career development.

What resources are available in the UCEM e-Library?

The e-Library is made up of eleven sections and provides students with around the clock access to online searchable databases from key industry and educational sources, thousands of journals, books, and resources, UCEM's entire collection of study materials and published work and UCEM's dissertation library.

[Back to top](#)

The sections that make up the UCEM e-Library:



© UCEM 2017

Resources available within the UCEM e-Library include Up-to-date information and online searchable databases from –

Key educational sources that include- Taylor and Francis Online, Ingenta Connect, Henry Stewart Publications and HS Talks, vLex | Justis, Westlaw EDGE UK, EBSCO Business Source Premier, Emerald Insight - access to around 2600 e-Book titles and their entire 'Property Management and the Built Environment' collection of journals, and

Industry-specific sources that include- IHS's Construction Information Service, *Estates Gazette* (EG) digital journal and EG Radius, *Property Week*, RICS's BCIS – Building Cost Information Service and ISURV online information service, NEC - New Engineering Contract Academia, BSRIA – Building Services Research and Information Association, and more.

Where to find help - Overwhelmed by the sheer amount of information out there?

Not only do libraries provide us with books to read, but they are valuable tools and resources. The UCEM e-Library is continually striving for improvement and changing to meet the demands of today's technology and ever-expanding volumes of knowledge creation.

The e-Library is here to help make finding up-to-date, credible, and relevant information easier. Access the [2023 e-Library interactive brochure](#) for further information.

[Back to top](#)

Supported by: Emerald Publishing Ltd
The work of the UCEM e-Library is endorsed
by Emerald Publishing Ltd



© Emerald Publishing 2021

Emerald Insight – the online platform for Emerald Publishing. Emerald champions new ideas in advancing the research and practice of business and management, and manages a portfolio of nearly three hundred journals, including a 'Property Management and the Built Environment' collection that UCEM subscribes to.



© Emerald Publishing 2021

Emerald works in close collaboration with numerous academic (including UCEM) and corporate organisations worldwide. Emerald Publishing endorses the e-Library's tailor-made research reports – a service provided to UCEM tutors to help supplement teaching and learning materials on subject-specific areas.

[September 2024] - Here are some Open Access Journal articles available via Emerald, all around the theme of

'Artificial Intelligence (AI) use within the Education Sector.'

Note: The following article examples are freely available via **Emerald Publishing Open Access:**

1. Wood D and Moss, S H (2024) 'Evaluating the impact of students' generative AI use in educational contexts', *[Journal of Research in Innovative Teaching & Learning](#)*, Vol. (ahead-of-print), No (ahead-of-print), Leeds: Emerald Publishing Ltd [online]. Available at: <https://doi.org/10.1108/JRIT-06-2024-0151> [accessed 5 July 2024]

2. Hidayat-ur-Rehman I (2024), 'Examining AI competence, chatbot use and perceived autonomy as drivers of students' engagement in informal digital learning', *[Journal of Research in Innovative Teaching & Learning](#)*, Vol. (ahead-of-print), No. (ahead-of-print), Leeds: Emerald Publishing Limited [online]. Available at: <https://doi.org/10.1108/JRIT-05-2024-0136> [accessed 5 July 2024]



© UCEM 2021

Remember: “A Librarian is a powerful search engine with a heart, that listens and understands the library and information requirements of others and provides a response in a format that suits their needs” says Lucy Roper, UCEM Information Governance Manager and who can be contacted on the library@ucem.ac.uk email address

[Back to top](#)



Student Career Services

UCEM Career Service

UCEM Career Services offer careers Information, Advice and Guidance (IAG) to potential, current and past students. The service is confidential, non-judgmental, and impartial. [Access and read the UCEM Careers interactive brochure](#) and [Access UCEM Career Services](#)

UCEM Careers Week 2024

- UCEM presented its first online Careers Week event in March. Through workshops, pod casts and interactive presentations, alumni, recruitment specialists and industry leaders shared their views, experience and advice with UCEM students.



Sessions included the following:

- “A day in the life of...” with UCEM Alumni
- Sector Insight discussion with UCEM Academics and industry professionals.
- Career Skills Workshop with employers and recruiters
- Creating Impact and Influence sessions; professionalism, leadership and future perspectives

To see the full programme and gain further information, visit the UCEM Careers Service, [Careers Pages – Careers Week, Inform, Connect, Inspire](#), via the UCEM secure VLE.

Related link:

- [Build a better future with UCEM videos](#)

Building Better Property Professionals

Property Elite’s sole aim is to build better property professionals – supporting your career every step of the way, whether you are completing a RICS accredited degree course, your RICS Assessment of Professional Competence (APC) or simply seeking engaging Continuing Professional Development (CPD).

[Back to top](#)



© 2022 — Property Elite LLP

Property Elite provides training and CPD services for property professionals, including students, APC candidates and corporate clients. Their Hot Topic Highlight blog posts will arm you with the information on the hottest topics – ready to tackle an important client meeting or begin revising for your RICS APC final assessment.

This month [**September 2024**] the **Hot Topic Highlight/Blog – Video Blog – Leadership (Part 3 of 3)**

In this week's blog, Rachel Saint DipSURV MRICS (Partner of Property Elite) and Daniel Jacob MRICS (Consultant of Property Elite providing performance and development coaching, particularly to SPA clients) discuss leadership in part 3 of 3-part video blog series.

Access further information and Hot Topic Highlight/Blog – Video Blog – [Leadership \(Part 3 of 3\)](#)

Also - **Access further information and Hot Topic Highlight/Blog – [Estates Gazette – Know Your Rights of Light, in full](#)**. **Note:** UCEM staff and students have full access to *Estates Gazette* via section 5 of the VLE e-Library.

- Natural light is particularly important for buildings users' wellbeing – who wants to live or work in a windowless room? The law, therefore, has to balance the right to enjoy natural light and the finite amount of space in the built environment (and need for new development and refurbishment).

[Access the Property Elite blog](#)

Also – [RICS Property Journal Article on An A-Z of the Landlord & Tenant Act 1954 for APC](#)'.

***RICS Property Journal* – [An A-Z of Inclusive Environments](#).**

- Ensuring an accessible built environment is as much an ethical obligation as a legal requirement.

Estates Gazette – APC Series -

- o [RICS APC Pathways, & APC Lifeline 2024 Update](#)
- o [Rent Reviews and Calderbank Offers](#).

- [Property Elite Hot Topic Highlight blog: A-Z of Investment Terms](#), and [Access Property Elite's 'Building Better Property Professionals'](#), [Latest Blogs](#)

[Back to top](#)

Note: The author of most of these blogs, Jen Lemen-Hogarth is an Associate Tutor – UCEM and Partner – Property Elite.

Lucy's Top Tips – If you are planning to sit your RICS APC/AssocRICS, make sure you are aware of Property Elite's APC Support services, including submission reviews, question packs, revision quizzes and e-mock interviews (available via the e-Library). You can also download this blog [in audio format](#) and listen whilst on the move. When you're done, you can request further information and a free CPD certificate.

Other related web-links



© EGi 2023

Estates Gazette recently published a supplement entitled '[Starting out in Real Estate](#)'.

This publication highlights the many varied and interesting career opportunities in real estate and has a number of contributions from UCEM. It's an interesting and informative read, covering areas such as:

- **What is Real Estate?** The asset classes, sectors and careers in the industry explained
- **A Day In The Life** – EG ask 19 professionals about their roles and skill sets
- **In Conversation with...** Crown Estate CEO Dan Labbad on how young people can change the world for the better, &
- **All About Apprenticeships** – How a degree apprenticeship works and why one could be right for you.

[GoConstruct.org](#) website highlights the many career opportunities available in construction & the built environment.

[TARGETjobs](#) (incl. [Construction and Property](#)) include graduate career guides and directories available for you to view online and download for future reference covering: [Explore Property](#), [Explore Engineering](#), and [Careers Survival Pack](#).

[House Building Careers](#) – Part of Home Builders Federation (HBF), here you will be able to learn about the home building industry and how it benefits you, your community, and the country as a whole.

[Access to: RICS Careers](#) – What is surveying? See how surveyors shape our communities and tackle global issues like climate change – and discover how you can improve the world around you.

[Back to top](#)

Building People

Enabling connections for a competent, diverse, and valued built environment workforce



© UCEM 2021

The aim of 'Building People' was to create a technology platform and collaborative network, which enables connections and seeks to reduce the skills shortages across the Built Environment. 'Building People,' a social enterprise that aims to connect people traditionally not involved in the Built Environment sector with employers seeking to plug the skills gap via an online platform.

People Wiki:

What are you looking for?

<p>Search Organisations</p> <p>See what help is available to find work, learning and/or support.</p> <p>LEARN MORE</p>	<p>Find Information</p> <p>Our partnership with Designing Building Wiki brings together industry-wide content in one place.</p> <p>LEARN MORE</p>	<p>Ask A Person</p> <p>Contact people to gain industry knowledge, experience and guidance.</p> <p>LEARN MORE</p>
<p>Learning & Events</p> <p>Find courses, training and events relevant to you.</p> <p>LEARN MORE</p>	<p>Work Opportunities</p> <p>Employers opportunities in one place making it easy to find what you're looking for.</p> <p>LEARN MORE</p>	<p>Resources</p> <p>Easily access sector-specific material, brought together all in one place.</p> <p>LEARN MORE</p>

© Building People 2021

The UK needs to build, but there is a shortage of competent and experienced workers, and the workforce we have lacks diversity. Building People joins the dots to help people find employers, opportunities, and resources, and to help employers engage with a more diverse range of talent.

People Wiki (a free, open access knowledge sharing platform for diversity and inclusion, skills and careers, and social value.) is a crucial part of Building People's ambition to create a single platform that brings together a multitude of previously fragmented information, knowledge, resources, opportunities, and needs focused on diversity and inclusion, skills and careers, and social value.

Related Link: UCEM incubated social enterprise, Building People, becomes a fully-fledged success story - It is an exciting time for Building People as it announces its three-year plan, which focuses on five key areas:

1. **Profile:** Positioning Building People as the go-to source for equality, diversity and inclusion best practice and activities, and through leadership in the built environment,
2. **Partnerships:** Delivering maximum joined-up impact through the growth and development of Building People's supply and demand networks,
3. **People:** Enabling equality of opportunity through the provision of a simpler and more supported user experience in a fragmented careers landscape,
4. **Policy:** Aligning with and supporting the achievement and enhancement of relevant national sector policy and activity, and
5. **Planning:** Establishing a secure future of Building People as a sector-backed movement for collaborative change across the built environment.

[Back to top](#)



UCEM Sustainability Hub

Sustainability supports UCEM vision and core purpose to provide truly accessible, relevant, and cost-effective education, enabling students to enhance careers, increase professionalism and contribute to a better sustainable built environment. **Note:** UCEM has a Sustainability Hub within the VLE e-Library where you will find interesting resources, news, articles, projects and publications which support and information 'future skills' for sustainability within the construction, surveying, and property industries.

LATEST NEWS: UCEM staff and students can now access the Supply Chain Sustainability School



Reproduced with permission

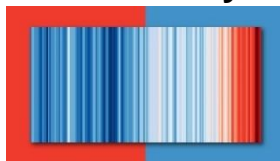
The Supply Chain Sustainability School represents a common approach to developing sustainability competence in the supply chain and is part of a continued commitment to lead the industry into a brighter, more sustainable future.



(**Note:** UCEM staff/students can freely register with their UCEM email address)

[Back to top](#)

UK sets 'most ambitious' climate target to cut emissions by 78% by 2035



[Image: courtesy Ed Hawkins]

(Climate stripes as shown in this image are sometimes referred to as warming stripes, or climate timelines and are data visualization graphics that use a series of coloured stripes chronologically ordered to visually portray long-term temperature trends.)

[Access further information and the *PBC Today* article, 'UK sets 'most ambitious' climate target to cut emissions by 78% by 2035', in full.](#)

Building Research Establishment (BRE) Sustainability

- Greater sustainability and its many benefits can be achieved for all buildings, homes, organisations, and communities.

The BRE provides leading edge information and advice on all aspects of sustainable that include – Sustainable construction of buildings, Communities, Infrastructure, Sustainable organisations, Materials, products and services, Waste management, Energy management services, and Training and publications.

[Access BRE Sustainability:](#) Practical guidance and support for delivering genuine sustainability benefits.

Building Cost Information Service (BCIS)

The BCIS has launched a free-to-access benchmark tool – [Built Environment Carbon Database \(BECD\)](#), for infrastructure carbon assessment in the UK construction industry.

The Routledge Sustainability Hub

The Routledge Sustainability Hub is an innovative Knowledge Centre for the global sustainability community, this Hub offers a wide range of resources for everyone – whether you are a teacher, a student, a professional or a citizen of the earth curious to discover more about the many facets of sustainability.

[Access the Routledge Sustainability Hub](#)

QSAND and the Sustainability Goals

The UN Sustainable Development Agenda, adopted by world leaders in 2015, maps out a 15-year plan to fight inequality, end poverty and tackle climate change challenges. Quantifying Sustainability in the Aftermath of Natural Disasters (QSAND) is a self-assessment tool to promote sustainable approaches and contributing to aid the achievement of several of these 17 goals in disaster affected global communities:

[Back to top](#)

Libraries' contribution to SDGs

Agenda Vision: Universal literacy
Goal 3: Good health and wellbeing
Goal 4: Contribution to quality education
Goal 5: Culture
Goals 5, 9, 7: ICT skills and access
Goals 8 & 10: Decent work, economic growth, reducing inequality
Goal 16: Access to information

Note: Information plays a vital role in just about everything we do.



(UN.org 2022)

Source: Designing Buildings .co.uk Wiki* (2021) '[Forgetting the big picture when considering sustainability](#)' [online], last edited 19 January. Note: "The Sustainable Development Goals icons and colour wheel are free to use" (UN.org 2021)

* **Note: Use of Wikis as a reference site**

Wikipedia and use of other Wikis are increasingly being used by people in the academic community, as an easy source of information about anything and everything. However, citation of Wikipedia may not be considered acceptable, because Wikipedia is not a creditable source. It is important to note that whilst Wikipedia may be one of the Web's most popular reference sites, it is not classed as a credible resource because anyone can be a contributor to the website.

This can be avoided by following two simple rules:

- 1) Remember that an encyclopaedia (which includes Wikipedia and any other Wiki) can be a good starting point for research and not an ending point.
- 2) An encyclopaedia can be good for getting a general understanding of a subject before you extend your study of the subject further. But you then must consider the subject in more depth using books, journals articles and other appropriate and credible resources. What you find in these other sources of information will be more detailed, more precise, and more carefully reasoned than the summary you found in an encyclopaedia. The sources you reference/cite in your work will therefore be these more detailed sources you have used.

(Connors State College 2022)

[Back to top](#)

UCEM BE Sustainable articles

UCEM signs up to CIC's new 'carbon zero' climate action plan

UCEM is one of the institutions which has signed up to the Construction Industry Council's (CIC) new climate action plan.

CIC's Climate Change Panel, chaired by its deputy chairman, Stephen Hodder MBE, led on the initiative, with signatories to the plan agreeing that:



Carbon Zero: the professional institutions' climate action plan

The signatories to this Action Plan agree that:

- the actions listed are necessary for dealing with the challenge of climate change;
- they will implement those actions appropriate to them as an institution/organisation; and
- they will support the other signatory institutions and organisations in delivering the remaining actions

© CIC 2021

The document, entitled 'Carbon Zero: the professional institutions' climate action plan,' was released last week and coordinates the efforts of built environment institutions in meeting the UK government's 2050 net zero emissions target.

To read the plan, head to the [CIC news story – 'CIC launches a Carbon Zero climate action plan for Professional Institutions'](#).

[Access the article 'UCEM signs up to CIC's new 'carbon zero' climate action plan' in full.](#)

5 practical tips for saving energy costs

- The cost-of-living crisis has spread across the globe. Significant increases to the cost of food and energy have outstripped worker's salaries, and spiralling inflation has plunged countless into poverty. While the tenth day of COP27 focussed on the decarbonising our energy systems, UCEM looked at practical ways to save energy that can be actioned without spending too much money.

1. Avoid leaving appliances on standby - The average UK household spends around £65 a year on appliances that are left on standby. This is the energy consumed by an appliance when it is not in use and not switched off at the socket. You may not think about the devices that have low-level usage when not in use, such as broadband, smart speakers and telephones, but these are the ones that are usually turned on for 24 hours a day and the amount of electricity they consume adds up.. By remembering to switch off devices more often or buying a standby saver, you could be saving yourself electricity you didn't even know you were consuming.

[Back to top](#)

2. Draught-proofing windows and doors - Draught-proofing is one of the most affordable and effective ways to save energy costs. It allows you to keep the warm air in your home by blocking out unwanted gaps that let cold air in – ultimately requiring less energy to heat up your home. By draught-proofing your windows and doors, you could save around £60 a year in a semi-detached house. Similarly, you could also save around £90 a year by draught-proofing an open chimney when not in use. A lot of draught-proofing can be done through simple DIY tasks at home, or professional draught-proofing can cost a bit more but last you longer.

3. Use your thermostat effectively – A large portion of your heating bills are absorbed by heating and hot water costs. By doing something as simple as turning down your central heating by just one degree, you could be saving up to £80 a year. You could also invest in a smart thermometer, which will heat your home more efficiently by only warming the room in use. They can be controlled by your phone and adapt to how long it takes to warm a certain temperature, so it can be set at exactly the right time.

4. Monitor your water usage - Water waste is something we may not realise is happening in our homes, but they add up and result in a large amount of total energy and water use. A dropping tap can waste more than 5,300 litres of water a year, so it's important to keep an eye on even the smallest amounts of water waster in the homes. By spending one minute less in the shower each day, a family of four could save up to £75 a year on energy and water bills. Similarly, turning off a running tap while you brush your teeth or wash your face can save more than 6 litres of water a minute!

5. Invest in energy saving appliances, like an air fryer – While it's good to buy home appliances based on their energy ratings, it's also good to research alternative types of appliances you can buy. One big change you can make is switching to an air fryer for day-to-day cooking rather than using a gas or electric cooker. Research by Utilita showed that on average they run at £55.91 a year, as opposed to a gas cooker on £121.06 per year and electric cooker on £335.57 per year.

[Access the article '5 practical tips for saving energy costs', in full.](#)

Further 'Sustainability' information and articles:

UCEM's ambition – To be the world's most sustainable university [online]. Available at: <https://www.ucem.ac.uk/sustainability/>

Also: CIOB - [A Guide to Sustainability in the Built Environment](#), offering practical tools and strategies to help professionals embrace sustainable practices during the planning, construction and ongoing operation of a building. Note: This book is also available via the [UCEM e-Library](#).

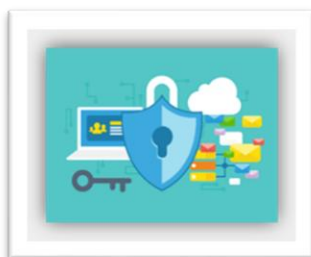
[Back to top](#)



Information Governance

UCEM is committed to advancing information governance and compliance, ensuring that the services provided comply with the General Data Protection Regulation (GDPR), Data Protection, Freedom of Information, Records management, Copyright, and Information Security.

Information Governance:



© 2020 iStockphoto LP, Royalty free image

To make sure that information is available in the right place and at the right time to support others, the e-Library ensures that the information services comply with data protection and copyright.

Data Protection

With new technologies constantly emerging and us finding ourselves moving further into an ever more digital direction, our personal data, how it is used and who has access to it becomes a growing and global concern for all.

The General Data Protection Regulation (GDPR) was the first legislative change in recent years to address these concerns, with a broad aim to invoke a cultural shift in the way organisations manage personal data.

Further information, advice, and guidance on Data protection, GDPR and more can be found at the Information Commissioner's Office (ICO), the UK's independent authority set up to uphold information rights in the public interest, promoting openness by public bodies and data privacy for individuals.

[Access the Information Commissioner's Office \(ICO\) website](#)

Latest Data Protection News [September 2024]

BBC News: Warning after rise in email phishing scams

- An increase in scam emails is behind a fresh warning for people in Guernsey. The Office of the Data Protection Authority (ODPA) said it had seen a surge in phishing activity (when fraudsters send scam emails or text message containing links to websites that either access systems or trick users into revealing sensitive information and transfer money) that had compromised emails from the island. **Keywords** include – [Data Breaches](#).

[Access the BBC News article, Thorpe, G. \(2024\) 'Warning after rise in email phishing scams', 27 June, in full.](#)

[Back to top](#)

ICO Latest News [September 2024] -

28 August 2024 – **Action taken against Labour Party for failing to respond to subject access requests (SAR) for personal information on time.**

ICO joins global data protection and privacy enforcement programme (04/24)

ICO reassures employers they can share staff data in a mental health emergency (03/24), and **Related Link:** ICO Blog: **Sharing personal data in an emergency – a guide for universities and colleges.** (09/21)

Also: UK Information Commissioner warns against 2024 becoming the year people lose trust in AI

ICO publishes guidance to ensure lawful monitoring in the workplace (10/23)

ICO urges organisations to harness the power of data safely by using privacy enhancing technologies (06/23)

Access the Information Commissioner’s Office, ‘News, blogs, and speeches’ section of their website

Further information, advice, and guidance (IAG) provided by the ICO

The ICO publish detailed IAG on:

- [Guidance on direct marketing and the public sector](#) (ICO, August 2021)
- [Sharing personal data with law enforcement authorities,](#)
- [The Accountability Framework.](#) (ICO, September 2020),
- [Codes of conduct](#) and [certification schemes.](#) (ICO, February 2020)
- When using data analytics on personal data, the ICO is urging all organisations to look at its toolkit. It can be found at **ICO > For Organisations > [Toolkit for organisations considering using data analytics](#)** (ICO, February 2021)
- [Freedom of Information Self-assessment toolkit](#) launched in 2020 helps identify gaps in compliance.
- Further updates have been made to [guidance for handling Subject Access Requests](#) including a [step-by-step guide for small businesses](#)
- [Building a controller-to-controller contract](#) + template contract with guidance

ICO What’s new? [September 2024]

The Information Commissioner’s Office (ICO) website has a ‘What’s new’ section to highlight and link to any changes in their **ICO Guide to Data Protection** as they occur, for example: The ICO have updated their guidance on **Regulation 13** (when personal information is exempt from disclosure under these access regimes when certain conditions are met. (12/23).

[Back to top](#)

The ICO have published:

Guidance on the [national security exemption](#) in Part 2 of the DPA18. (03/21)

Updated BCR communication following the EU-UK Trade and Co-operation Agreement to the [International transfers after the UK exit from the EU Implementation Period](#). (01/21)

[Data Sharing Code of Practice](#), alongside a [data sharing information hub](#) with further resources and support. (12/20)

Further guidance provided by the ICO.

[Read the Blog: 'Access to information: driving change through education, engagement and enforcement,' in full](#)

Copyright



© iStock (2021)

“It is important to remember that Copyright material in digital form is protected in exactly the same way as Copyright material in any other format. For example, text and images on a website are protected by copyright in the same way as printed material. Please note: if there is something you really want to use for learning materials and someone else owns the copyright ... [permission must be sought!](#)”

The copyright owner may wish to charge you, but often they just appreciate you asking them if they are happy for you to acknowledge their work and inform them of how the information will be used and who it will be circulated to.”

Source: Salmon, Prof. G., (2013), *E-tivities*, London: Routledge

Introducing Copyright: A plain language guide to Copyright in the 21st Century - Computers and the Internet have transformed the way we produce and distribute information and entertainment. This book explains copyright protection and what it means for copyright holders and copyright users. It also introduces readers to contemporary topics: (i) digital rights management, (ii) open licences, (iii) software patents & (iv) copyright protection for works of traditional knowledge.

Source: Hofman J (2009) *Introducing Copyright: A plain language guide to Copyright in the 21st Century* [e-book], Vancouver: The Commonwealth of Learning.

 **creative commons** [CC-BY-NC-ND](#)

[Access free copies of this book \(in PDF and EPUB formats\)](#)

[Back to top](#)

The Copyright Licensing Agency Ltd (CLA)

The CLA are a licensing body as defined by the Copyright, Designs and Patents Act 1988 c.48 (as amended) ["CDPA"]

The CLA licence organisations to copy and re-use extracts from print and digital publications on behalf of copyright owners – authors, publishers, and visual artists. By 'copying' the CLA means photocopying, scanning and re-use of content from magazines, books, journals, electronic and online publications, as well as press cuttings or documents supplied by a licensed third party.

Having a CLA licence helps to reduce the risk and potential cost of copyright infringement. This requirement applies to any organisation in the business, education, public or charitable sectors. **Note:** UCEM holds a **CLA 'Higher Education Photocopying and Scanning Licence'**

[LATEST: Access the newly upgraded Copyright Licensing Agency \(CLA\) website for further information](#)

CLA Check Permissions tool

The **[CLA Check Permissions tool](#)** is an online search tool that lets you quickly find out what you can copy under your organisation's CLA licence. Whether you'd like to photocopy and distribute an article to colleagues or upload a report to an intranet or VLE, the CLA Title Search simplifies the steps required to ensure compliance.

[Check permission at CLA Higher Education Licence.](#)

[Introducing the CLA Step-by-Step Guide and Interactive Toolkit for those checking permissions within their licence.](#)

Latest Copyright News [**September 2024**]

The Bottom Line – Is copyright going wrong?

- Is copyright law working to secure returns for creators? Copyright law has been around since 1710. Back then it only applied to books. Now, it covers music, sport, film, television, video games, anything really.

It was also much easier to enforce in the days when people couldn't reproduce things all the time.

[Access and listen to BBC Sounds, The Bottom Line 'Is copyright going wrong?'](#)

[Also: New AI systems collide with copyright law, and What is artificial intelligence, and will it take jobs?](#)

[Latest 'BBC Copyright News' incl. Banksy Copyright case](#)

Government Guidance – Changes to copyright law from 1 January 2021

- This guidance covers the impacts on UK right holders, businesses, cultural heritage institutions and consumers. Note: It is not legal advice.

[Back to top](#)

[Access the GOV.UK 'Changes to copyright law from 1st January 2021', in full.](#)

Keeping abreast of the latest developments in Information Governance: [Copyright Resources](#) – Naomi Korn Associates has developed free and openly licensed copyright, licensing and data protection help resources.

Copyright & Information Technologies in Education (CITE)



© CLA 2020

The CITE Forum is a place to discuss the CLA's technology and licence offerings (such as the Digital Content Store) but also an opportunity for Higher Education Institute's to network, share and disseminate relevant copyright information.

As UCEM Information Governance Manager I regularly attend the Copyright Licensing Agency (CLA) CITE Forum and presented on '[UCEM's e-Library: Our Story So Far](#)', at the [CITE Winter 2021 Forum](#). Source: CLA (2021) [UCEM e-Library: Our story so far](#), a presentation given at the Winter 2021 CITE Forum [video], YouTube. Available at:

www.youtube.com/watch?v=GmuENzHeGO0&feature=youtu.be [accessed 12 September 2024]. Ref: **From 58:05 until 1.28:41.**

Further information - Copyright Licensing Agency, CITE

- '[CITE – 2020 Vision](#)', [CITE Magazine, Winter 2019, No. 3](#)
- '[A CITE to behold](#)', [CITE Magazine, Summer 2019, No. 2](#) &
- [CITE Magazine - A biannual magazine for the CITE Community, Winter 2018, No. 1.](#)

UCEM is committed to advancing information governance and compliance, ensuring that the services we provide comply with **GDPR, Data Protection, Records Management, Copyright, and Information Security**. **LATEST:** In 2024 the UCEM e-Library, in collaboration with UCL, produced a short [Copyright Essentials e-learning course](#) (accessed via the UCEM secure Virtual Learning Environment). This e-learning will help staff and students better understand copyright and how to apply this understanding to studies, research and other activities.

Another part of my role as involves keeping abreast of the latest developments and benchmarking the work I do against that of others. I also undertake regular Continuing Professional Development (CPD), and an element of this is attending the CITE Forum attending events and conferences provided through my professional body, CILIP – The Library and Information Association, and others.

CILIP's National Copyright Conference 2024

This national and virtual conference was held on 23rd May and in

[Back to top](#)

association with Naomi Korn Associates, as well as great speakers and further experts in the field in attendance.

#CILIPCopy24 / #copyright

The Annual CILIP Online Copyright Conference is an ideal and unique opportunity for all librarians, archivists and information professionals to update their knowledge and professional practice in this crucial area. Additionally, it appealed to those who want to update their general copyright, licensing and publishing knowledge.

This year's conference theme is "**Copyright: New Horizons – Attack of the Bots.**" The programme explored different relationships, such as those between copyright and ethics, copyright and licensing, copyright and creators, AI and IP – and all shades in-between. Discussions considered how these sometimes symbiotic and sometimes more tension-driven relationships play out in the day-to-day, particularly within the contexts of libraries, universities and cultural heritage organisations. The conference programme covered the following:

- **AI, IP and ethics in the context of black heritage creators'**
- **The Practical Impact of AI on Academic Research,**
- **AI in the UK heritage sector,**
- **The Future of Copyright,** and
- **CLA Licensing and Technology Updates.**

Sessions covered broad copyright impact for the profession incl.

- **Keynote: AI, IP and ethics in the context of black heritage creators'**

***Pawlet Brookes MBE**, Founder, DEO and Artistic Director, Serendipity Institute for Black Arts and Heritage*

- **Practical Impact of AI on Academic Research**

***Matthew Lambert**, Head of Copyright, Policy and Assurance, British Library.*

We are in a time of flux. Since the arrival of ChatGPT at the end of 2022, AI development has moved forward in leaps and bounds, so fast that the regulations to govern it have yet to be written. In the meantime, all the stakeholders are implementing their own policies and processes to adapt. In this session, Matt will talk us through the changes and the onward impact they are having on the educational, academic and cultural heritage sectors.

- **AI in the UK heritage sector**

***Dr Mathilde Pavis**, Legal Consultant, Pavis Consultancy*

Dr Mathilde Pavis discussed what Artificial Intelligence can do for the UK heritage sector and turns the question on its head to ask what the heritage sector can do for Artificial Intelligence.

The session looked at how Artificial Intelligence is used across the UK heritage sector today, and how organisations can take advantage of Artificial Intelligence to support their work. This

[Back to top](#)

presentation draws on case studies from organisations throughout the UK that have used AI technologies in three areas of work: heritage management, visitor experiences and day-to-day operations.

The discussion stresses that, as with any tool, the benefits of Artificial Intelligence can only be accessed if the risks associated with the technology are adequately managed. This means that heritage organisations should carefully plan what, how and when it is appropriate to use Artificial Intelligence, based on their priorities and resources.

Turning the question on its head, the session closes by highlighting an important, much less discussed fact: heritage institutions can play a critical role in AI innovation, as trusted knowledge organisations and the custodians of rich datasets. The heritage holds valuable assets in the form of skills, data, public trust, which are needed for AI innovation to serve the public interest.

- **The Future of Copyright**

Louis Coiffait-Gunn, CEO of CILIP

Louis Coiffait-Gunn, CILIP's new CEO and Naomi Korn will discuss the future of copyright and both the challenges and opportunities AI might bring to rights-holders and users.

- **CLA Licensing & Technology Updates**

James Bennett, Head of Rightsholder Relations, Copyright Licensing Agency.

This session provided an update on the Copyright Licensing Agency's latest licensing initiatives, including developments around AI and text and data mining.

- **'Optimism or anxiety'? Co-creating a copyright literacy strategy for complex contemporary challenges**

Timothy Riley, Information Adviser (Copyright and Licensing), University of Aberdeen

Copyright has long been seen as challenging. Today, ever-evolving technology throws up new questions and dilemmas, even for seasoned copyright specialists. Is there any hope then for non-experts grappling with this complexity and uncertainty? How can university students and staff rise to the challenges and opportunities and engage with copyright issues in the university and beyond?

At the University of Aberdeen, we are meeting this challenge by rolling out an institutional copyright literacy strategy to empower our university community to create and reuse legally and ethically. Our aim is to enable all our staff and students to make informed,

[Back to top](#)

risk-aware decisions based on a sound understanding of the fundamentals of copyright law. They should also be able to think critically, question assumptions, and apply their understanding in new and unfamiliar situations. As well as being a key part of individuals' information and digital competency, this will support key areas of university activity, including teaching, research, and graduate skills and employability.

Find out how we drew on best practice from across the sector and engaged with our community to create a strategy that aligns with our members' needs and our university's wider strategic aims. We will look at the steps we took, and our progress so far in embedding the strategy and rolling out a copyright literacy initiative across our university.

- **How do we achieve success as Solo Librarians?**

Lucy Roper, Information Governance Manager, UCEM

Being a solo librarian or librarian in a small team with limited help can be daunting. Librarianship is multi-faceted, and while plenty of books cover library work in detail, few provide a single point of reference from the perspective of a solo librarian who must juggle multiple tasks at one time and deal with all aspects of library provision on their own.

AI is creeping increasingly into our lives, and libraries have undoubtedly witnessed a rapid transformation due to AI. As we strive for continual improvement, we must keep abreast of the latest developments and follow the ever-changing library landscapes and popularity of information systems and services, online library tools and technological advancements.

I therefore, took it upon myself to write a practical handbook providing a one-stop-shop with accompanying time-saving templates (easily downloadable via the eBook version and companion website) that can be adapted to help aid the daily activities and processes (including the effective use of copyrighted material and undertaking yearly copyright reporting) often faced by those working in information, knowledge, libraries and related disciplines.

I follow the year in the life of a solo librarian, providing a yearly planner and timeline of activities, with supporting guidance to aid each step of the way. This guidance can then be applied, adapted and tailored to other working practices. In this lightning talk, I will share the foundations of the book, identify some of the lessons I have learned, and provide examples of the types of guidance available.

Further information is available at: CILIP (2024 '[CILIP Copyright Conference 2024 programme](#)'). CILIP.org.uk, Events.

[Back to top](#)

The Challenges of Remote Working

- The challenges of remote working and points to consider from a data privacy perspective. Provided within this article are points to consider from a data privacy perspective that include:

1. **Have a clear statement to all staff** stressing that “The protection of personal data that we hold, and use is important to us and must be always handled in a way that is compliant with data protection law and our Data Protection and Privacy policies. While we must adapt to comply with the official guidance, we will adjust our working processes to allow us to deliver our services. These are time limited instructions that will be kept under review. At the end of the period then all data that is held temporarily on personal devices as a direct result of this exceptional times, will be deleted.” (Tullo 2020)
2. **Set out what use of data**, contact lists, customer documents are being allowed.
3. As part of this exceptional response to homeworking **keep a full record of where staff are working from and what equipment they are using.**
4. **State that you have assessed the best way of ensuring homeworking efficiency** and are proposing that personal devices and mobile phones can be used. That you will review this [weekly seems sensible at present] in line with experience and how staff report it is working.
5. **Reissue and emphasize your usual security arrangements –** Virus and password protection, not leaving data visible to others, having a PIN code, or not sharing their device with others in their family or household.
6. **Take care to be aware where data is being stored**, even if temporary so that the security risk is managed and assessed.
7. For the **weekly reviews –** have your Senior Leadership Team note the number of staff using personal devices, any queries, or issues they are finding and demonstrate that you are monitoring the situation and are flexible in closing it down if any specific concerns arise.
8. Choose your **collaboration tool of choice** and consider recording online meetings and note actions especially where team members are geographically spread out and where broadband speeds and kit may vary in quality.
9. You might also consider having a **standard introduction for homeworking staff** to explain that they are homeworking and not in the office, so callers understand the position.
10. This is where a nominated **Data Protection Office (DPO)** or Data Officer can support the senior team in the messaging to colleagues.

There are growing numbers of tips and survival guides online that include: Information Commissioner’s Office (ICO) [Data protection and coronavirus: what you need to know](#).

[Back to top](#)

Source: Tullo C, OBE (2020) '[The Challenges of Remote Working at Present](#)'. © [Naomi Korn Associates](#), 2020. Some Rights Reserved. The text is licensed for use under the Creative Commons Attribution Share Alike Licence (CC BY SA).

Regarding UCEM we have followed these pointers:

(i) A clear statement went to staff, and UCEM has a designated area within their central SharePoint site for Business Continuity Planning (BCP) that has the following folders containing

- Official Communications [Internal and External]
- Human Resources (HR) guidance and support
- Information Technology (IT) technical support, guidance, and documents

Data Protection guidance (incl. a new guidance note entitled, 'Processing Personal data when remote working.')

- The [UCEM Data Protection and Privacy Policies](#) have been updated and should be read in conjunction with IT Policies).
- & Hints and tips for working from home.

(ii) A retention and destruction schedule is in place that collates lists of data used within respective teams and departments; (iii) A register is kept of where staff are working from and equipment used; (iv) Regular online meetings and weekly All-staff keep everyone updated and ensuring regular communication; (v) IT provide regular updates and guidance; (vi) GDPR 2020 training has been launched to re-enforce the importance of knowing how data is used and where it is being stored, even if temporary so that risk is managed and assessed; (vii and viii) online equipment and collaboration tools are well established at UCEM as an online education provider, but are regularly monitored; (ix) As mentioned above, hints and tips for working from home are provided, & (x) UCEM has a designated Data Protection Officer (DPO).

Please note: There are regular updates -

- (i) On the [UCEM Website](#),
- (ii) [VLE Help Page](#) (for students), and
- (iii) within the [UCEM Website Home > Supported Online Learning > e-Library](#) current awareness services, incl. Information blog and *Knowledge Foundations* (for all).

#BE Informed

(iv) A short [UCEM e-Library video](#) (used within UCEM Marketing, [Social Media business channels i.e. LinkedIn](#) to promote the e-Library, *Knowledge Foundations*, regular information blogs, and more)

“Perseverance will get you anywhere.”

@NASAPersevere / #NASAPersevere

A to Z of useful references and web-links:

A - B - C - D - E - F - G - H - I - J - K - L - M

N - O - P - Q - R - S - T - U - V - W - X - Y - Z

[Back to top](#)

A

Advance HE (Previously HEA – Higher Education Academy) is dedicated to helping higher education shape its future. Providing insight, enhancing organisational performance, developing, and connecting people, and accrediting achievements. Advance HE [online]. Further information is available at: www.advance-he.ac.uk [accessed 27 September 2024]

American Society of Civil Engineers (ASCE) Civil Engineering database provides free access to over eighty thousand abstracts taken from ASCE publications since 1973. ASCE [online]. Further information is available at: www.asce.org [accessed 27 September 2024]

Association of Researchers in Construction Management (ARCOM) brings together all those interested in construction management research. It aims to further the advancement of knowledge in all aspects of management in construction by support education, dissemination, and research. ARCOM [online]. Further information available at: www.arcom.ac.uk [accessed 27 September 2024]

ARCOM Abstracts database – contains open access of every ARCOM conference paper since 1997 and is now a major resource for all active researchers.

ARCOM Newsletters - contains the latest news from the industry.

AJ Buildings Library (AJBL) – The AJ Buildings Library highlights thousands of exemplar projects, most from the last 20 years but including major projects back to 1900. Available at: www.ajbuildingslibrary.co.uk/ [accessed 27 September 2024] (This valuable resource is just one part of the *Architects' Journal* subscription, available via the VLE e-Library > OpenAthens Library login > Construction Information Service (CIS) and/or EBSCO Business Source Ultimate).

[\[Back to A to Z\]](#)

B

Barbour ABI [online]. Explore the latest Construction Market Analysis Reports, for free. Further information available at: <https://barbour-abi.com/resources/reports/> [accessed 27 September 2024]

BBC Search and BBC Education [online]. Further information available at: www.bbc.co.uk/search and www.bbc.co.uk/news/education [accessed 27 September 2024]

BIDSTATS [online] – Free UK tenders' portal. Find UK public sector contracts and further information available at: <https://bidstats.uk/> [accessed 27 September 2024]

BIM Task Group – The Building Information Modelling (BIM) Task Group support and develop the objectives of the Government Construction Strategy and the requirement to strengthen the public sector's capability in BIM implementation [online]. **N.B.** This group and programme are now part of the University of Cambridge, **Centre for Digital Built Britain (CDBB)** [online]. Further information

is available at: www.cdcb.ac.uk/AboutDBB/FAQs [accessed 27 September 2024]. Please refer to question 9 – What is the Digital Built Britain Programme? specifically.

BIMForum – The BIMForum’s mission is to facilitate and accelerate the adoption of building information modelling (BIM) in the AEC (Architecture, Engineering and Construction) industry. Further information is available via the BIMForum Website [online] and at: <http://bimforum.org> [accessed 27 September 2024]

BOMA International (Building Owners and Managers Association International) – a federation of 91 BOMA U.S. associations and seventeen international affiliates. Founded in 1907, BOMA’s mission is to advance a vibrant commercial real estate industry through advocacy, influence, and knowledge. **BOMA Research and Resources** [online] and available at: www.boma.org/BOMA/Research-Resources [accessed 27 September 2024]

British and Irish Legal Information Institute (BAILLI) Case Law Search [online]. Further information available at: www.bailii.org/form/search_cases.html [accessed 27 September 2024]

British Council of Shopping Centres (BCSC) was the professional body and authoritative voice for retail-led regeneration and for the management of and investment in shopping places [online]. Note: BCSC has changed and is now **REVO – Retail. Property. Community.**

British Property Federation (BPF) – The British Property Federation is a membership organisation devoted to representing the interests of all those involved in real estate ownership and investment. BPF [online]. Further information available at: <https://bpf.org.uk> [accessed 27 September 2024]

Building Conservation.com [online] – Information resources for conservation, restoration, and repairs. Further information is available at: www.buildingconservation.com accessed [accessed 27 September 2024]

Building Conservation.com Articles directory by subject [online]. Available at: www.buildingconservation.com/articles/articles.htm [accessed 27 September 2024]

Building Engineer [online] – Building Engineer website covers news and insights from the following topics: Building & Fire Safety; Business & Management; Construction & Building Materials; Energy & Sustainability; Health, Safety & Wellbeing; Policy & Regulations; Refurbishment; Technology & Digital Construction. Further information is available at: www.buildingengineer.org.uk/ [accessed 27 September 2024]

Building People - a technology platform and collaborative network, which enables connections and seeks to reduce the skills shortages across the Built Environment. Building People [online]. Further information is available at: www.buildingpeople.org.uk [accessed 27 September 2024]

Building Research Establishment (BRE) [online] is an independent and impartial, research-based consultancy, testing and training organisation, offering expertise in every aspect of the built environment and associated industries. Further information available at: <https://bregroup.com/about-us> [accessed 27 September 2024]

BRE A-Z of BRE Services (from Accreditation to Zero Carbon) [online]. Further information is available at: <https://bregroup.com/a-z/> [accessed 27 September 2024]

BRE Case Studies [online]. Further information is available at: <https://bregroup.com/expertise/case-studies/> [accessed 27 September 2024]

Building Services Research and Information Association (BSRIA) [online]. BSRIA is a test, instrumentation, research, and consultancy organisation, providing specialist services in construction and building services. Available at: www.bsria.co.uk [accessed 27 September 2024]

Building talk [online]. Available at: www.buildingtalk.com [accessed 27 September 2024] *Building Talk* is an email newsletter for Architects, Civil Engineers and Building Services Contractors.

Built Environment Carbon Database (BECD) is a free-to-use repository of whole-life carbon assessments of built assets and product LCA data. BECD [online]. Available at: <https://carbon.becd.co.uk/> [accessed 27 September 2024]

[Back to A to Z]

C

Campaign to Protect Rural England (CPRE) campaign for a beautiful and living countryside. They work to protect, promote, and enhance our towns and countryside to make them better places to live, work and enjoy, and to ensure the countryside is protected for now and future generations. CPRE [online]. Available at: www.cpre.org.uk [accessed 27 September 2024]

CPRE Resources provides the latest news articles, policy guidance notes, published reports and research surrounding the following - Countryside, Farming and food, Housing and planning, Energy and Waste, and Transport. CPRE Resources [online]. Available at: www.cpre.org.uk/resources [accessed 27 September 2024]

CBRE – With more than 100,000 professionals in over 100 countries, CBRE is the global leader in commercial real estate services and investment. CBRE [online]. Available at: www.cbre.co.uk [accessed 27 September 2024]

CBRE Insights and Research - CBRE sets the standard for global real estate research by providing clients with accurate and insightful market knowledge. CBRE [online]. Available at: www.cbre.co.uk/insights [accessed 27 September 2024]

Centre for Architecture and Built Environment Research (CABER) seeks to develop innovative approaches, procedures, technologies, and techniques that support the design, management, reconfiguration, maintenance and operation of buildings, their fabric, and the environments they create. Note: CABER incorporates the previous Centre for Construction and Property Research (CPRC). CABER [online] and available at: www1.uwe.ac.uk/et/research/caber.aspx [accessed 27 September 2024]

The Center for Construction Research and Training (CPWR) is dedicated to reducing occupational injuries, illnesses, and fatalities in the construction industry through research, training, and service programs. CPWR [online] and available at: www.cpwr.com [accessed 27 September 2024]

Centre for Digital Built Britain (CDBB) is a partnership between the Department of Business, Energy & Industrial Strategy, and the University of Cambridge to deliver a smart digital economy for infrastructure and construction for the future and transform the UK construction industry's approach to the way we plan, build, maintain, and use our social and economic infrastructure. CDBB [online]. Available at: www.cdbb.cam.ac.uk/AboutDBB [accessed 27 September 2024]

Centre for Sustainable Energy (CSE) is an independent national charity that shares our knowledge and experience to help people change the way they think and act on energy.

CSE Resources [online] include - Reports & publications, Toolkits, Advice leaflets, Websites, *Energise* newsletter, Videos on The fundamentals, Improving your community building, Community-wide energy saving projects, Neighbourhood and low carbon planning, Renewable energy projects, and further Resources for schools and educators. Available at: www.cse.org.uk/local-energy/resources [accessed 27 September 2024]

Chartered Association of Building Engineers (CABE) is a member-focused non-profit organisation. CABE shares knowledge, raises standards, and develops professionals, enabling a professional construction sector that works to create better, safer, and more sustainable buildings that enhance people's lives. CABE [online]. Available at: <https://cbuide.com/> [accessed 27 September 2024]

Chartered Institute of Building (CIOB) [online]. The Chartered Institute of Building is the international voice of the building professional, representing an unequalled body of knowledge concerning the management of the total building process. Available at: www.ciob.org [accessed 27 September 2024]

CIOB Library Incl. Library and Information Services [online]. Available at: www.ciob.org/learning/library [accessed 27 September 2024]

CIOB People - construction's new people development resource, reaching 55,000 industry professionals. [online]. Available at: <https://ciobpeople.com/> [accessed 27 September 2024]

CIOB's Construction Management journal (formerly *Construction Manager*) [online]. Available at: <https://constructionmanagement.co.uk/> [accessed 27 September 2024]

CIOB's Global Construction Review journal [online]. Available at: www.globalconstructionreview.com/ [accessed 27 September 2024]

CIOB BIM+ online newsletter [online]. Available at: www.bimplus.co.uk [accessed 27 September 2024]

Chartered Institution of Building Services Engineers (CIBSE) – the prime source of expertise in the Building Services Industry. CIBSE [online]. Available at: www.cibse.org [accessed 27 September 2024]. N.B. Within the CIBSE website you can '**CIBSE - Search the Knowledge Portal**' covering themes such as BIM, Building Regulations, FM, Facades, Fire Safety, Lighting and Heating, Management, and project management, Residential, Sustainability, and more.

China Dialogue [online] – China and the world discuss the environment. Available at: www.chinadialogue.net [accessed 27 September 2024]

CIBSE Journal [online]. Available at: www.cibsejournal.com [accessed 27 September 2024].

The CIT-eA Project Creating Innovative Technology – Enhanced Assessments – a research project that explored ways to increase the number of assessments in Further and Higher Education using technology. The CIT-eA Project [online]. Available at: <http://citea.digitalinsite.co.uk> [accessed 27 September 2024]

Cities / buildings images database [online]. Available at: www.washington.edu/ark2 [accessed 27 September 2024] is a collection of images of buildings and cities from around the world aimed at students, researchers, and educators.

C-Link is a procurement software company who also provide resources (incl. guides, eBooks, and other materials) created to help you make more money on your construction project. C-Link [online]. Available at: www.C-Link.com [accessed 27 September 2024]

Commercial Real Estate Services (CBRE) is the world's largest real estate services provider, with a preeminent leadership position in virtually all key business centers globally. CBRE [online]. Available at: www.cbre.co.uk [accessed 27 September 2024]

Community-Led Housing (CLH) Toolkit: a resource for local authority and housing professionals' [online]. Available at: www.communityledhomes.org.uk/community-led-housing-toolkit [accessed 27 August 2024]. This Toolkit provides a wealth of technical and non-technical information on a

broad range of issues relevant to CLH. There are five Toolboxes, covering (i) Housing (ii) Communities (iii) Legal (iv) Planning and (v) Finance.

Confederation of British Industry (CBI) is the UK's premier business lobbying organisation, providing a voice for employers at a national and international level. CBI [online]. Available at: www.cbi.org.uk [accessed 27 September 2024]

Conference on Training in Architectural Conservation (COTAC) was formed in 1959 to improve the standard of education of everyone involved in building conservation, including craftsmen, professionals, and homeowners. COTAC [online]. Available at: <http://ihbconline.co.uk/cotac2> [accessed 27 September 2024]

COTAC Digital Bibliography [online]. Available at: http://cotac.global/digital_bib/ [accessed 27 September 2024]

Constructing Excellence (delivered with **bre**) is a platform for industry improvement to deliver excellence through clients, industry, and users through collaborative working. Resources include publications, tools, and newsletter. Constructing Excellence [online]. Available at: <http://constructingexcellence.org.uk/> [accessed 27 September 2024]

Construction Enquirer is a news website in construction. Construction Enquirer [online]. Available at: www.constructionenquirer.com [accessed 27 September 2024]

The **Construction Index** [online] provides a wide range of information services for the UK construction industry, that include a search engine of construction companies, daily construction news, market data, email newspaper letter, and Case Law analysis and legal commentary. Further information is available at: www.theconstructionindex.co.uk [accessed 27 September 2024].

Construction Industry Council (CIC) – The representative forum for the professional bodies, research organisations and specialist business association in the construction industry. CIC [online] and available at: <http://cic.org.uk> [accessed 27 September 2024]

The **Construction Industry Research and Information Association** (CIRIA) [online]. Further information and resources are available at: www.ciria.org/default.aspx [accessed 27 September 2024]

Construction Industry Training Board (CITB) is the training board for the construction industry and partner in Construction Skills, the Sector Skills Council. CITB [online]. Available at: www.citb.co.uk [accessed 27 September 2024]

Construction Manager is the magazine of the Chartered Institute of Building (CIOB) [online] and available at: www.constructionmanagermagazine.com/ [accessed 27 September 2024]

Construction News [online]. Available at: www.constructionnews.co.uk [accessed 27 September 2024]

Construction Products Association (CPA) represents the UK's manufacturers and distributors of construction products and materials. Construction Products Association [online]. Further information is available at: www.constructionproducts.org.uk [accessed 27 September 2024]

Construction Project Information Committee (CPIC), responsible for providing best practice guidance on the content, form, and preparation of construction production information, and making sure this best practice is disseminated throughout the UK construction industry. CPIC [online]. Available at: www.cpic.org.uk [accessed 27 September 2024]

Construction and Property Research Centre (CPRC), University of the West of England (UWE) – the CPRC's research activity is focused around the three inter-related stages of the built

environment lifecycle, namely design, construction, and maintenance. Note: The UWE **Centre for Architecture and Built Environment Research** (CABER) now incorporates the CPRC.

COPAC* exposes rare and unique research material by bringing together the catalogues of c.90 major UK and Irish Libraries. In a single search you can discover the holdings of the UK's national libraries (including the British Library), many University libraries, and specialist libraries. Note: From August 2019 Copac was replaced by **Jisc's Library Hub Discover**.

Copyright Licensing Agency (CLA) [online]. The CLA are a licensing body as defined by the Copyright, Designs and Patents Act 1988 c.48 (as amended) ["CDPA"]. The CLA licence organisations to copy and re-use extracts from print and digital publications on behalf of copyright owners. Available at: www.cla.co.uk [accessed 27 September 2024]

Council for British Archaeology (CBA) is an independent charity bringing together members, supporters, and partners to give archaeology a voice and safeguard it for future generations. Archaeology for all [online]. Available at: <http://new.archaeologyuk.org> [accessed 27 September 2024]

[Back to A to Z]

D

Delta T [online] is the Building Services Research and Information Association's quarterly journal. Bracknell: BSRIA [online]. Available at: www.bsria.com/uk/knowledge/bookshop/delta_t/ [accessed 27 September 2024]

Designing Buildings Wiki [online] and available at: www.designingbuildings.co.uk/wiki/Home [accessed 27 September 2024] is an industry-wide, cross-discipline forum for finding and sharing information.

Designing Buildings Wiki – Student resources [online] and available at: www.designingbuildings.co.uk/wiki/Student_resources [accessed 27 September 2024] has a wide range of resources aimed at students of the built environment, as shown here.

Designing Buildings Wiki – Construction industry acronyms [online] and available at: www.designingbuildings.co.uk/wiki/Construction_industry_acronyms [accessed 27 September 2024] providing a list of commonly used construction industry acronyms.

The **Design Council** [online] champions great design that improves lives and makes things better and available: www.designcouncil.org.uk [accessed 27 September 2024]. See also **Inclusive Design Hub for the Built Environment** (a project of The Design Council).

Directory of Open Access Books (DOAB) is a service which harvests details of academic and mainly peer-reviewed books published on open access. DOAB [online]. Available at: www.doabooks.org/doab [accessed 27 September 2024]

Directory of Open Access Journals (DOAJ) covers all open access scientific and scholarly journals, using a quality control system to guarantee the content. DOAJ [online]. Available at: <https://doaj.org> [accessed 27 September 2024]

[Back to A to Z]

E

Education and Employers Research - Online research library marks its tenth anniversary. This online library provides a comprehensive repository of different and effective approaches to employer engagement and careers education. It brings together the latest thinking with selected

research published over the past 40 years. Education and Employers [online]. Available at: www.educationandemployers.org/research-type/research-library [accessed 27 September 2024]

The Economics Network [online] provides publications, events, and other resources to support university teachers of economics throughout the UK and worldwide. Available at: www.economicsnetwork.ac.uk [accessed 27 September 2024]

EngineeringUK is a not-for-profit organisation, which works in partnership with the engineering community to inspire tomorrow's engineers and increase the number and diversity of young people choosing academic and vocational pathways into engineering. EngineeringUK [online]. Available at: www.engineeringuk.com [accessed 27 September 2024]

Engineering and Physical Sciences Research Council (EPSRC) is the main UK government agency for funding research and training in engineering and the physical sciences, investing more than £800 million a year in a broad range of subjects – from mathematics to materials science, and from information technology to structural engineering. EPSRC [online]. Available at: www.epsrc.ac.uk [accessed 27 September 2024]

English Heritage cares for over four hundred historic buildings, monuments, and sites – from world-famous prehistoric sites to grand medieval castles, from Roman forts on the edges of the empire to a Cold War bunker. English Heritage [online]. Further information is available at: www.english-heritage.org.uk [accessed 27 September 2024]. Note: English Heritage has now separated into two organisations. If you are looking for information on listing, planning, grants or heritage research and advice, please visit **Historic England**.

Estates Gazette The UK's largest commercial property news team. *Estates Gazette Interactive* [online]. Available at: www.egi.co.uk [accessed 27 September 2024] incl. ***Estate Gazette, News from the nationals*** – Round-up of the top property stories with quick links.

European Real Estate Society (ERES) was established in 1994 to create an international real estate network between academics and professionals across Europe. ERES [online]. Further information is available at: www.eres.org [accessed 27 September 2024].

ERES Digital Library [online] and available at: www.eres.org/index.php/activities/libraryeres [accessed 27 September 2024]

[Back to A to Z]

G

Great Buildings Online [online]. Available at: www.architectureweek.com/search.html [accessed 27 September 2024] provides a database of buildings around the world and across all historic periods. You can search the database by building names, place, or architect name. It provides access to 3D models, photographic images, and architectural drawings.

Glenigan [online]. Available at: www.glenigan.com [accessed 27 September 2024] provides UK construction project sales leads, market analysis, forecasting, and company intelligence.

Global Research Gateway: CBRE's online Insights and Research – a resource for real estate research and reports. CBRE Global Research Gateway [online]. Available at: www.cbre.com/insights [accessed 27 September 2024]

Global Construction Review – An online journal from the Chartered Institute of Building (CIOB) [online]. Available at www.globalconstructionreview.com [accessed 27 September 2024]

The Green Construction Board (GCB) is a consultative forum consisting of key members of UK construction and property industry. GCB [online]. Further information is available at: <https://cic.org.uk/projects/project.php?s=green-construction-board> [accessed 27 September 2024]

The Guardian, Housing network – providing insight, advice, and best practice from your community. The Guardian, Housing network [online]. Further information is available at: www.guardian.co.uk/housing-network [accessed 27 September 2024]

The Guardian, Higher Education / Universities [online]. Further information is available at: www.guardian.co.uk/higher-education-network [accessed 27 September 2024]

[Back to A to Z]

H

Health and Safety Executive (HSE) is the national independent watchdog for work-related health, safety, and illness. HSE are an independent regulator and act in the public interest to reduce work-related death and serious injury across Great Britain's workplaces. HSE [online]. Available at: www.hse.gov.uk/index.htm [accessed 27 September 2024]

HSE, Health & Safety in the construction industry [online]. Further information is available at: www.hse.gov.uk/construction [accessed 27 September 2024]

HSE Publications [online]. Available at: www.hse.gov.uk/pubns/index.htm [accessed 27 September 2024]

Heritage Alliance - The largest coalition of heritage interests in England, the Heritage Alliance is the umbrella body for national and major regional Heritage NGOs. Heritage Alliance [online]. Available at: www.theheritagealliance.org.uk [accessed 27 September 2024]

Heritage Update: the online edition of the fortnightly Heritage Alliance's **Heritage Update** e-bulletin [online] and available at: www.theheritagealliance.org.uk/update [accessed 27 September 2024]

Heritage Help - Created by the Joint Committee of the National Amenity Societies, Heritage Help offers information and advice on matters related to the management and protection of local historic environments. Heritage Help [online]. Available at: <http://heritagehelp.org.uk> [accessed 27 September 2024]

Historic England is the public body that looks after England's historic environment. Historic England champion historic places, helping people understand, value and care for them. Further information is available at: www.historicengland.org.uk [accessed 27 September 2024]

Historic Environment Local Management (HELM) - provides accessible information, training, and guidance to decision makers in local authorities, regional agencies, and national organisations whose actions affect the historic environment. Note: All HELM web content on the Historic England website [online] and available at: <https://historicengland.org.uk/services-skills/training-skills/helmtraining> [accessed 27 September 2024].

Home Builders Federation (HBF) represents and serves its members in a range of ways that include Ensuring senior politicians and government officials are aware of housing issues and the challenges faced by our members; and working with Government officials to ensure housing policies are introduced that facilitate housing supply, in a way that is workable for the industry [online]. Available at: www.hbf.co.uk [accessed 27 September 2024]

House Building Careers (part of HBF). Here you will be able to learn about the home building industry and how it benefits you, your community, and the country as a whole [online]. Further information available at: <http://housebuildingcareers.org.uk> [accessed 27 September 2024]

[\[Back to A to Z\]](#)

Inclusive Design Hub for the Built Environment is a collection of the latest guidance and best practice on inclusive design in the built environment and a project of **The Design Council** [online]. Available at: www.designcouncil.org.uk/projects/inclusive-design-hub-built-environment [accessed 27 September 2024]

INFABODE connects its community of users with industry information from the Real Estate sector on one customisable online platform. Infabode reduces the amount of time people spend trying to access key information from the Real Estate industry. **INFABODE** [online]. Available at: www.infabode.com [accessed 27 September 2024]

Institution of Civil Engineers (ICE) is a registered charity that strives to promote and progress civil engineering. ICE [online]. Available at: www.ice.org.uk [accessed 27 September 2024]

ICE Virtual Library [online]. Available at: www.icevirtuallibrary.com [accessed 27 September 2024] is a free database that indexes all ICE journals.

International Council for Open and Distance Education (ICDE) is the leading global membership organisation for enhancing the quality of open, distance, flexible and online education, including e-Learning. ICDE [online]. Available at: www.icde.org [accessed 27 September 2024]

Institute of Historic Building Conservation (IHBC) is the principal professional body for building conservation practitioners and historic environment specialists working in England, Northern Ireland, Scotland, and Wales, with connections to Ireland. IHBC [online]. Available at: www.ihbc.org.uk [accessed 27 September 2024]

Institute of Workplace and Facilities Management (IWFM) – Formerly the British Institute of Facilities Management, BIFM is now the IWFM. The workplace has been incorporated into their new brand so that the status of the professional can help take careers further, regardless of specialism. IWFM [online]. Further information is available at: www.iwfm.org.uk [accessed 27 September 2024]

IWFM Insight – discover leading research and resources for the workplace and facilities management profession. IWFM Insight [online]. Available at: www.iwfm.org.uk/insight [accessed 27 September 2024]

IWFM News – discover the latest news affecting the profession and gain expert insight and advice. IWFM News [online] Available at: www.iwfm.org.uk/news [accessed 27 September 2024]

IWFM Digital Magazine, facilitate - Informing workplace and facilities management professionals. IWFM *facilitate* [online]. Available at: www.facilitatemagazine.com/ [accessed 27 September 2024]

ITcon – The **Journal of Information Technology in Construction** is a peer-reviewed scholarly journal on the use of IT in architecture, civil engineering, and facility management. *ITcon* [online]. Available at: www.itcon.org [accessed 27 September 2024]

[\[Back to A to Z\]](#)

J

JISC Library Hub Discover – Library Hub Discover replaces COPAC* and SUNCAT, offering increased coverage of university libraries along with new facilities and improved response times.

Library Hub Discover currently contains 50,642,372 records created from 142,932,638 records contributed by 192 institutions. Jisc Library Hub Discover [online]. Available at: <https://discover.libraryhub.jisc.ac.uk> [accessed 27 September 2024].

JORUM Archive – After 13 years delivering and sharing content across the higher education, further education and skills sectors the Jorum service and website was retired on 30 September 2016. However, many of the open education resources (OER) that were available in Jorum, access to their Jorum Archive can be accessed via the JISC website [online]. Available at: www.jisc.ac.uk/website/legacy/jorum [accessed 27 September 2024] where you can also gain access to JISC's full digital resources offer.

Journal of Online Learning and Teaching (JOLT) - The **MERLOT Journal of Online Learning and Teaching** is a peer-reviewed, open-access, online publication that aims to promote scholarship in the use of the Internet and web-based multimedia resource in higher education.

JournalTOCs is the largest, free collection of scholarly Journal Title of Contents (TOCs) [online]. Available at: www.journaltoocs.ac.uk/index.php [accessed 27 September 2024]

JSTOR Open Content - a digital library for scholars, researchers and students, JSTOR provides access to academic journal articles, books, and primary sources in seventy-five disciplines. Note: UCL Press publishes peer-reviewed scholarly monographs, edited collections, textbooks and journals. All of its books are available on: (a) **UCL Press**, and (b) **JSTOR** websites
[Back to A to Z]

K

[Back to A to Z]

L

Leeds Beckett University's – School of the Built Environment, Engineering and Computing [online]. Further information that includes Subject Area Research – 1) Civil Engineering and Building Services Engineering, 2) Planning, Housing and Human Geography, and 3) Surveying, Construction and Project Management is available at: www.leedsbeckett.ac.uk/school-of-built-environment-engineering-and-computing [accessed 27 September 2024]

Leeds Beckett University's - Sustainability [online]. Further Information is available at: www.leedsbeckett.ac.uk/leeds-sustainability-institute [accessed 27 September 2024]

Leeds Beckett University – The Library [online]. Available at: <http://libguides.leedsbeckett.ac.uk/home> [accessed 27 September 2024]

Lexology is a comprehensive source of international legal updates, analysis, and insights. Lexology publish more than 450 articles every day from over 1,100 law firms and service providers worldwide across fifty work areas in twenty-five languages. Lexology [online]. Available at: www.lexology.com [accessed 27 September 2024]

Local Government Association (LGA) is the national voice of local government. They work with councils to support, promote, and improve local government. LGA [online]. Available at: www.local.gov.uk [accessed 27 September 2024]

LGA Building Safety Knowledge Hub - The Local Government Association and the National Housing Federation are co-hosting an online social housing building owner network across England, to provide information, and develop and share good practice, on building safety. LGA [online]. Available at: www.local.gov.uk/topics/community-safety/building-safety-knowledge-hub [accessed 27 September 2024]

[\[Back to A to Z\]](#)

M

Multimedia Educational Resource for Learning and Online Teaching (MERLOT). The MERLOT project began in 1997, when the California State University Center for Distributed Learning (CSU-CDL) developed and provided free access to MERLOT [online]. Available at: www.merlot.org/merlot [accessed 27 September 2024]. MERLOT is a curated collection of free and open online teaching, learning, and faculty development services contributed and used by an international education community.

[\[Back to A to Z\]](#)

N

Naomi Korn Associates – Copyright Resources has developed free and openly licensed copyright, licensing and data protection help resources. Naomi Korn Associates [online]. Available at: <https://naomikorn.com> [accessed 27 September 2024]

National Building Information Modelling (BIM) Library, the construction industry's free-to-use resource of the NBS (trading name of RIBA Enterprises Ltd) standard BIM content [online]. Available at: www.thenbs.com/our-tools/nbs-national-bim-library [accessed 27 September 2024]

National Building Specification (NBS) is an integrated global platform for everyone involved in the design, supply, and construction of the built environment. NBS [online]. Available at: www.thenbs.com [accessed 27 September 2024]

NBS Knowledge [online] is available at: www.thenbs.com/knowledge [accessed 27 September 2024]

NBS Publication Index [online] - this index provides information about key industry documents which are or have been available in The Construction Information Service (CIS), or cited in NBS Guidance. Further information is available at: www.thenbs.com/Publicationindex [accessed 27 September 2024]

NBS Digital Construction Conversations podcasts – New to 2021, NBS are talking to inspirational industry leaders about the trends and technologies impacting the construction industry – from sustainability to regulations to change management. NBS Digital Construction Conversations [online]. Available at: www.thenbs.com/podcast [accessed 27 September 2024]

National Skills Academy for Construction (NSAfC) is an industry-led framework supporting clients and contractors to identify, develop and realise employment and skills solutions across construction projects. CITB, NSAfC [online]. Available at: www.citb.co.uk/national-skills-academy-for-construction [accessed 27 September 2024]. Note: It is facilitated by the Construction Industry Training Board (CITB).

The National Trust protect historic houses, gardens, mills, coastline, forests, woods, fens, beaches, farmland, moorland, islands, archaeological remains, nature reserves, villages, and pubs. The National Trust [online]. Available at: www.nationaltrust.org.uk [accessed 27 September 2024]

National Trust's Nature & Climate [online]. Available at: www.nationaltrust.org.uk/our-cause/nature-climate [accessed 27 September 2024]

New Civil Engineer (NCE) a weekly magazine published for the Institution of Civil Engineers (ICE). NCE [online]. Available at: www.nce.co.uk [accessed 27 September 2024]

We Are Nima – nima – nima’s ultimate vision is a thriving and sustainable built and natural environment transformed by exploiting purpose- driven data. nima [online]. Available at: <https://wearenima.im/> [accessed 27 September 2024]

[\[Back to A to Z\]](#)

O

Online Learning Consortium (OLC) is devoted to advanced quality online learning by providing professional development, instruction, best practice publications and guidance to educators, online learning professionals and organisations around the world. Online Learning Consortium [online] and further information is available at: <http://onlinelearningconsortium.org/> [accessed 27 September 2024]

OLC’s Online Learning – the official journal of the Online Learning Consortium. *Online Learning* [online]. Available at: <http://onlinelearningconsortium.org/read/> [accessed 27 September 2024]

Open Education Resources, Research Hub – OER Hub gathers research on the impact of open education resources (OER) on learning and teaching practices. OER Hub [online]. Further information is available at: <http://oerhub.net/> <http://oerresearchhub.org/> [accessed 27 September 2024]

Open Praxis – published by the International Council for Open and Distance Education – ICDE, *Open Praxis* is a peer-reviewed open access scholarly journal focusing on research and innovation in open, distance and flexible education. *Open Praxis* [online]. Available at: <https://openpraxis.org/> [accessed 27 September 2024]

Open University (OU) UK [online] and available at: www.open.ac.uk [accessed 27 September 2024]

Open University (OU) UK, Institute of Education Technology [online] and available at: www.open.ac.uk/iet/main [accessed 27 September 2024]

Organisation for Economic Cooperation and Development (OECD) iLibrary is the online library of the OECD, featuring its books, papers and statistics and is the gateway to OECD’s analysis and data. Note: It replaced SourceOECD. OECD iLibrary [online]. Available at: www.oecd-ilibrary.org [accessed 27 September 2024]

[\[Back to A to Z\]](#)

P

Parliament.uk, Research briefings produced by the House of Commons Library, the House of Lords Library and the Parliamentary Office of Science and Technology (POST). Parliament, Parliamentary business, Publications and records, Research briefings. Parliament.UK [online]. Further information is available at: <http://researchbriefings.parliament.uk> [accessed 27 September 2024]

Planning, BIM & Construction Today – The PBC Today website has compelling and informative features, news and products for a diverse audience serving a wide construction sector. PBC Today [online]. Available at: www.pbctoday.co.uk/news [accessed 27 September 2024]

Planning Advisory Service (PAS) provide consultancy and peer support, training sessions and online resources to help local authorities understand and respond to planning reform. PAS [online]. Available at: www.local.gov.uk/pas [accessed 27 September 2024].

Planning Officers Society (POS) is the voice for public sector planning practitioners, pursuing good and effective planning practice within local government [online]. Available at: www.planningofficers.org.uk [accessed 27 September 2024]

The Planning Portal is the UK Government's online planning and building regulations resource for England and Wales [online]. Available at: www.planningportal.co.uk [accessed 27 September 2024]

The Prince's Foundation was created by the merging of The Prince's Foundation for Building Community, The Prince's Regeneration Trust, The Great Steward of Scotland's Dumfries House Trust and The Prince's School of Traditional Arts in 2018. This combined force enables the charity to achieve HRH's goal of creating harmonious communities, through three core tiers. The Prince's Foundation [online]. Available at: <https://princes-foundation.org> [accessed 27 September 2024]

Property People's Network (PPN) is open to all interested in land and property and provides a forum to network through a range of social activities and visits [online]. Available at: www.ucem.ac.uk/product/corporate-ppn-membership/ [accessed 27 September 2024]

Property Week – Commercial property news. *Property Week* [online]. Available at: www.propertyweek.com [accessed 27 September 2024]

[Back to A to Z]

R

Regeneration and Renewal – Placemaking Resource incorporating Regeneration & Renewal magazine [online]. Available at: www.placemakingresource.com [accessed 27 September 2024]

Registry of Open Access Repositories - ROAR is hosted at the University of Southampton, UK and is made possible by funding from the JISC. ROAR is part of the EPrints.org network and promotes the development of open access by providing timely information about the growth and status of repositories throughout the world. ROAR [online]. Available at: <http://roar.eprints.org/> [accessed 27 September 2024]

Residential Landlord – an online resource providing Landlord Resources, a Document Download Centre (containing templates and free tenancy agreements to amend and use as required), news and views, advice, and guidance [online]. Further information is available at: <https://residentiallandlord.co.uk/> [accessed 27 September 2024]

The Royal Institute of British Architects (RIBA) is a global professional membership body driving excellence in architecture [online]. Further information is available at: www.architecture.com [accessed 27 September 2024]

RIBA Library – Visit the RIBA Library [online]. Available at: www.architecture.com/contact-and-visit/riba-library [accessed 27 September 2024]

RIBA Home > Knowledge and resources > Resources > RIBA Plan of Work [online]. Further information is available at: www.architecture.com/knowledge-and-resources/resources-landing-page/riba-plan-of-work [accessed 27 September 2024]

Royal Institution of Chartered Surveyors (RICS) is an independent body committed to setting and upholding the highest standards of excellence and integrity in land, property, and construction. RICS [online]. Available at: www.rics.org [accessed 27 September 2024]

RICS > News & Insights [online]. Available at: www.rics.org/news-insights [accessed 27 September 2024]

RICS > Upholding Professional Standards [online]. Available at: <https://www.rics.org/profession-standards> [accessed 27 September 2024]

RICS Publications (*Modus* and journals) - RICS publishes a range of journals that are free to view online. Available at: www.rics.org/news-insights/modus-and-journals [accessed 27 September 2024]

RICS Knowledge and Information Services – The aim is to combine the best of RICS’s traditional library service (**RICS library catalogue**) and space with an enquiry and resource service, RICS Knowledge and Information Service [online]. Available at: www.rics.org/profession-standards/knowledge-and-information-services [accessed 27 September 2024]

Royal Town and Planning Institute (RTPI) is the UK's leading planning body for spatial, sustainable, and inclusive planning and is the largest planning institute in Europe with over 23,000 members. In 2014 they celebrate their Centenary. RTPI [online]. Available at: www.rtpi.org.uk [accessed 27 September 2024]

[Back to A to Z]

S

Savills Research – Savills Research, Insight & Opinion provides advice and analysis to clients across the UK, with specialists in commercial, residential, and rural property research [online] and available at: www.savills.co.uk/insight-and-opinion/research.aspx [accessed 27 September 2024]

Shoosmiths Insights & articles – Shoosmiths is a major UK law firm with a network of offices working together as one team. Read the latest insights, articles, and commentary from Shoosmiths or explore their content library that include – Placemaking; Real estate; Diversity & Inclusion; Litigation & disputes; Governance; Employment, and more. Shoosmiths [online]. Available at: www.shoosmiths.co.uk/insights [accessed 27 September 2024]

Specification Online – the free to use news and online products resource for specifiers working across the architectural and building sector [online] and available at: <http://specificationonline.co.uk> [accessed 27 September 2024]

Supply Chain Sustainability School represents a common approach to developing sustainability competence in the supply chain. It is a free resource available to any supplier and is part of their continued commitment to lead the industry into a brighter, more sustainable future. Supply Chain Sustainability School [online]. Further information is available at: www.supplychainschool.co.uk/uk/default-home-main.aspx [accessed 27 September 2024]

[Back to A to Z]

T

The Telegraph – Property and construction industry - The latest news, analysis and share prices on Britain's biggest construction and property companies. The Telegraph, Property and Construction Industry [online]. Available at: www.telegraph.co.uk/property-and-construction-industry [accessed 27 September 2024]

Tomorrow’s Engineers brings together resources and evidence to support the engineering community in getting the most out of their engagement activity. Tomorrow’s Engineer [online]. Available at: www.tomorrowsengineers.org.uk [accessed 27 September 2024]

Trust in Digital Repositories (TrustDR) – a research project that examined how to effectively manage the legal aspects of digital collections of learning resources and produced a policy

development toolkit. TrustDR [online]. Available at: <https://trustdr.digitalinsite.co.uk> [accessed 27 September 2024]

[\[Back to A to Z\]](#)

U

University College London (UCL) Press – UCL Press publishes peer-reviewed scholarly monographs, edited collections, textbooks and journals. All its books are available on: (a) UCL Press, and (b) JSTOR (see above).

UK BIM Alliance - here to help the built environment sector to take the first fundamental step in your journey to digital transformation. UK BIM Alliance [online]. Available at: <https://ukbimalliance.co.uk/> [accessed 27 September 2024]

UK BIM Framework – The overarching approach to implementing BIM in the UK. Further information on BIM Standards, Guides and Resources. UK BIM Framework [online]. Available at: www.ukbimframework.org [accessed 27 September 2024]

University College of Estate Management (UCEM) is the leading provider of supported distance learning for real estate and construction professionals. UCEM [online]. Available at: www.ucem.ac.uk [accessed 27 September 2024]

UCEM e-Library is a comprehensive and valuable online resource, supplementing teaching and learning materials and enabling students to access a wealth of subject-specific and credible information to support them throughout their studies. UCEM e-Library [online]. Available at: www.ucem.ac.uk/e-library [accessed 27 September 2024]

UCEM Research repository – a digital online archive which will allow free access to UCEM-produced outputs, including but not limited to research publications, podcasts etc. UCEM Research repository [online]. Available at: <https://ucem.repository.guildhe.ac.uk/> [accessed 27 September 2024]

University of the West of England (UWE), Centre for Architecture and Built Environment Research (CABER) seeks to develop innovative approaches, procedures, technologies, and techniques that support the design, management, reconfiguration, maintenance and operation of buildings, their fabric, and the environments they create. Note: CABER incorporates the previous Centre for Construction and Property Research (CPRC). CABER [online]. Available at: www1.uwe.ac.uk/et/research/caber.aspx [accessed 27 September 2024]

UWE Educational Resources for the Built Environment (ERBE) produces unique and highly respected educational resources for academic and professional use and incorporates the **Video Project** and the **Construction Website**. Further information can be found on the ERBE website [online] and available at: www.uwe.ac.uk/about/colleges-and-schools/arts-technology-and-environment/architecture-and-built-environment/erbe [accessed 27 September 2024]

- **UWE Construction and conservation films**
- **UWE Construction website**

UWE, Library, Search for things: A-Z [online]. Available at: www1.uwe.ac.uk/library/searchforthingsa-z.aspx [accessed 27 September 2024]

UWE, Research publications and reports – Providing immediate world-wide open access to all UWE's research output. Research at UWE Bristol [online]. Available at: www1.uwe.ac.uk/research.aspx [accessed 27 September 2024]

V

Virtual Training Suite - The Virtual Training Suite is a national eLearning service for Higher and Further Education in the UK, offering FREE "teach yourself" tutorials delivered over the Web, for students, lecturers and researchers who want to learn what the Internet can offer in their subject. This is a public service from **JISC**.

[\[Back to A to Z\]](#)

Y

Yale Environment 360 - an online magazine offering opinion, analysis, reporting, and debate on global environmental issues. We feature original articles by scientists, journalists, environmentalists, academics, policy makers, and business people, as well as multimedia content and a daily digest of major environmental news. *Yale Environment 360* [online]. Available at: <https://e360.yale.edu/> [accessed 27 September 2024]

Z

Zotero – Your personal research assistant. Zotero is a free, easy-to-use tool to help you organise, annotate, cite, and share research. Zotero [online]. Available at: www.zotero.org/ [accessed 27 September 2024]

(Note: The web links provided were correct at the time of compilation.)

UCEM e-Library - The UCEM e-Library has a searchable database ([e-Library > section 9](#)) containing circa 1,000 [Useful web-links to e-Resources](#) for all subject areas covered within our programme of studies, pertaining to the built environment profession and the education sector.

Disclaimer:

Knowledge Foundations (formerly the library e-bulletin) is intended to highlight news items and provide basic background information only. UCEM cannot accept responsibility for the content of external websites. Please view and refer to UCEM's [Terms of Use](#).

Please note: support for Internet Explorer is being removed by Microsoft and a number of platforms will no longer work on it, therefore you may need to use a PC with Google [Chrome](#), Mozilla [Firefox](#), Microsoft [Edge](#), or other browsers.

University College of Estate Management (UCEM), Horizons, 60 Queen's Road, RG1 4BS, UK – UK (Free): 0800 019 9697, International: +44 (0)118 921 4696, Email: library@ucem.ac.uk

UCEM Social media: [Facebook](#), [Twitter](#), [LinkedIn](#), [YouTube](#)

© Roper L (2024) *Knowledge Foundations* [online] Reading: UCEM. Available at: UCEM Website > Supported Online Learning > [e-Library](#)



This work is licensed under a [Creative Commons Attribution-ShareAlike 4.0 International License](#).