



## UCEM Institutional Research Repository

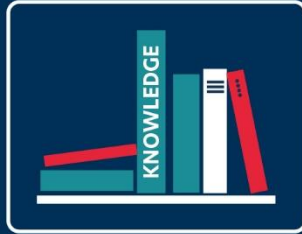
<b>Title</b>	Knowledge Foundations, Issue 8 - August 2024
<b>Author(s)</b>	Lucy B M Roper
<b>ORCID</b>	<a href="https://orcid.org/0009-0008-3176-2266">https://orcid.org/0009-0008-3176-2266</a>
<b>Type</b>	Other
<b>Publication title</b>	
<b>Publisher</b>	UCEM
<b>ISSN/ ISBN</b>	
<b>Publication Date</b>	1 August 2024
<b>Version</b>	
<b>DOI</b>	
<b>Repository link</b>	<a href="https://ucem.repository.guildhe.ac.uk/id/eprint/127/">https://ucem.repository.guildhe.ac.uk/id/eprint/127/</a>
<b>Link to publication</b>	<a href="https://www.ucem.ac.uk/e-library">https://www.ucem.ac.uk/e-library</a>

### Copyright:

UCEM aims to make research outputs available to a broader audience via its digital [Repository](#). Where copyright permits, full text material held in the Repository is made freely available. URLs from GuildHE Research Repositories may be freely distributed and linked to. Please refer to each manuscript for any further copyright restrictions.

### Reuse:

Copies of full items can be used for personal research or study, educational, or not-for-profit purposes without prior permission or charge provided that the authors, title and full bibliographic details are credited, a hyperlink and/or URL is given for the original metadata page, and the content is not changed in any way.



## Knowledge Foundations

### Inside This Issue

- 01 [UCEM News](#)
- 02 [Other News](#)
- 03 [Property & Construction Statistics](#)
- 04 [Built Environment Research](#)
- 05 [e-Journal Review](#)
- 06 [e-Book Review](#)
- 07 [UCEM e-Library](#)
- 08 [Student Career Service](#)
- 09 [UCEM's Sustainability Hub](#)
- 10 [Information Governance](#)

[A to Z of useful references and web-links](#)

### What's in this month's issue

- **Latest UCEM News**, incl. - UCEM named Partnership of the Year at The King's Foundation awards.
- **Things you need to know this week** – Labour election win signals pro-development policy push. Industry figures looks to Labour's manifesto pledges being converted to policy but highlight the challenges ahead
- **Latest Research** from Savills, RICS, CIOB, CBRE, JRF, The Smith Institute, and more.

Happy reading!

## Issue 8 – August 2024

Welcome to UCEM's monthly *Knowledge Foundations* newsletter (formally the library e-bulletin), a compendium of news and views, research and resources relating to the educational sector and Built Environment.

The UCEM Library aims to disseminate information, promote current awareness, and share good practices, to assist in the continual professional development of all those working and aspiring to work within the Built Environment/Property and Construction industries.

**“The mission of librarians is to improve society through facilitating knowledge creation in their communities.”**

(R. David Lankes)

The initial aim of this UCEM Library's current awareness service was to help keep students and staff informed of the education sector and industry-specific news, share current and best practices, highlight the latest research, and identify case studies that will support studying and supplement teaching and learning resources. However, over the years and upon request, the readership has now expanded.

We welcome news and information from readers to include in future editions - please [email us](#).

### Supported Online Learning

The readership of *Knowledge Foundations* has expanded (to include Alumni) and is now promoted further afield, with the latest version appearing on the UCEM Website.

[Visit Supported Online Learning](#)

[Back to top](#)

## UCEM News

### LATEST UCEM News

#### **UCEM takes part in fourth sustainability accreditation audit**

On 18 and 19 June, UCEM took part in its fourth sustainability credentials audit as part of its Students Organising for Sustainability (SOS-UK) Responsible Futures accreditation.

The Responsible Futures accreditation aims to support institutions with embedding social responsibility and sustainability into their formal and informal curriculums. UCEM has held this accreditation since 2018, and completed successive audits in 2020 and 2022.

Access further information and the article, '[UCEM takes part in fourth sustainability accreditation audit](#)' in full.

#### **Other UCEM News**



© UCEM 2021

#### **UCEM named Partnership of the Year at The King' Foundation awards**

- UCEM is delighted to announced it has received **Partnership of the Year** award from the King's Foundation.

These inaugural awards, attended by His Majesty The King, Royal Founding President, are set to become a regular opportunity to recognise and celebrate the work of The King's Foundation.

The ceremony, which took place at St Jame's Palace, London, on June 11, was attended by 250 guests, including nominees, families, celebrities and notable supporters of the Foundation. UCEM won the Partnership of the Year award, which was presented by **Alan Titchmarsh**, ambassador for The King's Foundation, and accepted by **Aled Williams**, Executive Director, Innovation and Partnerships at UCEM.

Access further information and the article, '[UCEM named Partnership of the Year at The King's Foundation awards](#)' in full.

**Related Link:** [His Majesty King Charles III retains Patronage of UCEM](#)

[Back to top](#)

## UCEM Vice Chancellor addresses Westminster Higher Education conference



Addressing the Westminster Higher Education Forum's virtual '*Next Steps for Lifelong Learning Entitlement*' conference, UCEM Vice Chancellor Ashley Wheaton outlined some of the challenges facing the introduction of the 'Lifelong Learning Entitlement' (LLE).

Access further information on the event, and the article, '[UCEM Vice Chancellor addresses Westminster Higher Education conference](#)' in full.

## UCEM hosts Research & Scholarship Engagement Day (RED)

University College of Estate Management (UCEM) hosted its second ever Research & Scholarship Engagement Day (RED) on 12 June 2024. This was a hybrid event, hosted online and at Horizons, Reading, that brought together researchers, academics, and faculty members to share ideas, discuss research, and explore new collaboration opportunities.

Access further information and the article, '[UCEM hosts Research & Scholarship Engagement Day \(RED\)](#)' in full.

### Related Link(s):

[UCEM awarded research funding from the Royal Academy of Engineering](#) and [UCEM awarded two research grants to explore gender equality challenges in 2024](#)

Also: [UCEM co-hosts international conference and signs partnership agreement with Batangas State University, Philippines](#),

## UCEM conference proposes collaboration to foster built environment inclusivity

- Leaders from across the built environment came together to discuss inclusivity and collaboration in a conference held by UCEM. "Joined up leadership for an inclusive built environment," was the latest in UCEM's 'INSPIRE' series,

**"INSPIRE** - so that we can together **IN**fluence for **S**kills, **P**roductivity, **I**ndustry, **R**esearch and **E**ducation"

this event underscores UCEM's commitment to **INSPIRE**. It embodies UCEM's dedication to reducing fragmentation and duplication in the sector, thereby enhancing the impact of existing diversity initiatives. Access further information on the event, and the article, '[UCEM conference proposes collaboration to foster built environment inclusivity](#)' in full.

[Back to top](#)

## UCEM celebrates receiving ISO 14001 certification

UCEM have been awarded an ISO 14001 certification – an internationally recognised global standard that sets out the criteria for successful environment management systems.

This ISO is UCEM's first recognition of this kind. The aim of this standard is to help organisations establish an environmental management system – a framework that allows them to manage environmental issues, improve the efficiency of resource usage and reduce waste.

Being awarded this ISO:

- Demonstrates UCEM's commitment to the environment
- Increases employee engagement and environmental awareness throughout the organisation
- Improves the confidence of stakeholders and strengthens UCEM's reputation
- Provides UCEM with a competitive and financial advantage through improved efficiencies and reduced costs
- Encourages suppliers to improve their environmental performance.

The awarding of this ISO is just one part of our wider sustainability strategy and fits into the **How we operate** stated of the UCEM's ongoing **Globe initiative**. It also addresses 13 of the **Sustainable Development Goals** set out by the United Nations. Rather than existing within a silo, this certification forms part of our vision to create a culture of sustainability within the organisation.

VISIT THE **GLOBE** WEBPAGE 

The next steps moving forward will be for UCEM to maintain this standard, keep up the hard work that went into achieving it, and more forward by displaying continuous improvement in future audits.

Access further information and the article, **'UCEM celebrates receiving ISO 14001 certification'** in full.

### Related Links:

- **Globe: UCEM's ambition go create a more sustainable built environment**
- **Introducing: our Student Officers for Sustainability.**

**Also:** Please visit the '**Sustainability Hub**' within **Knowledge Foundations** for further supporting information.

[Back to top](#)

**Also:**

**[UCEM launches 'Be part of the change' to challenge lack of representation in the built environment](#)**

**[UCEM INSPIRE event brings together sustainability leaders, and related articles -](#)**

- **[Foundations for success: UCEM convenes experts to improve built environment apprenticeships](#)**
- **[UCEM to convene cross industry event on enabling successful built environment apprenticeships.](#)**

**[Tackling the Climate Crisis – deeper engagement from smaller and specialist universities highlighted in new report,](#)**

**[UCEM places 13<sup>th</sup> in list of best 50 training providers,](#)**

**[UCEM hosts hybrid workshop on gender equality in Jordan and Egypt,](#)**

**[UCEM joins campaign to drive better gender balance at board level,](#) and**

- **[Access more information on UCEM's diversity and inclusion objectives.](#)**

**[CIOB and UCEM team up to deliver an apprenticeship with a route to chartered status,](#)**

**[UCEM gains indefinite degree awarding powers,](#)**

**[UCEM reasserts its commitment to organisational excellence with Advance HE membership,](#)**

**Note: [Keep abreast of the latest UCEM News and events](#)**

– Read our blog to keep updated on Building Environment industry insights, student case studies, and thoughts from UCEM Principal: Ashley Wheaton.

- **[For more on UCEM's ambitions, take a look at the Institution's \*Vision and Strategy\* brochure](#)**

Further information and the latest developments can also be found via the **[UCEM Website](#)**, & don't forget that the UCEM **[e-Library](#)** can be accessed 24/7 (via the VLE-Virtual Learning Environment) with a wealth of valuable resources to help 😊. If you have any further questions, please contact:

- Student enquiries – Student Central on our VLE
- Employer enquiries – **[businessdevelopment@ucem.ac.uk](mailto:businessdevelopment@ucem.ac.uk)**
- Other enquiries –

Email: **[reception@ucem.ac.uk](mailto:reception@ucem.ac.uk)**, Tel: +44(0)118 467 2100

[Back to top](#)

## Other News

### Things you need to know this week: Labour

#### election win signals pro-development policy push

- Industry figures look forward to Labour's manifesto pledges being converted to policy but highlight the challenges ahead.

Labour's general election win looks set to herald key changes in planning and regeneration policy, with the party's manifesto pledges including an updated National Planning Policy Framework (NPPF) and a new industrial strategy to drive economic growth. Industry figures welcomed Labour's priorities. Tom Stannard, chair of the Institute of Economic Development (IED), said his organisation looked forward to working with the new government, "especially around their mission to kickstart economic growth". He added: "We are already encouraged by the alignment between the Labour manifesto and the IED's Grow local, grow national manifesto, published last November (2023)". Jessica Bowles, director of strategic partnerships and impact at developer Bruntwood, said, "There is so much that needs to be done to support the UK's communities and businesses – growing the economy, addressing our productivity challenges and improving public services – and it is heartening to see the focus the new government has on getting on with the job at hand". Matthew Spry, senior director of consultancy Lichfields, noted in a blog on the company's website, "We can expect a draft NPPF before parliamentary recess, suggesting lessons have been learned from how long it took previous new governments to cascade a national goal for planning into actual policy that guides plan making and deciding on applications". Colin Brown, head of planning and development at consultant Carter Jonas said, "The extent to which the new government can succeed where the last one frankly struggled will depend on many factors. Buildin 'the right homes in the right places' is a laudable aim but not necessarily as straightforward as it sounds." Lawrence Turner, director of consultancy Boyer, said, "Labour's pledge to immediately update the National Planning Policy Framework and invest in local planning authorities is a promising sign that they are serious about supporting and enabling sustainable development". He continued: "We urge the government to follow through on their commitment to recruit additional planning officers and provide the support needed to local authorities." Craig Sheach, partner at PRP, said, "The system is grossly understaffed, with a lack of experience causing applications to grind to a halt. Staff are leaving for better-paid private sector jobs, taking their skills and experience with them. If planning could be quicker and more predictable, it would give developers more certainty and encourage them to bring forward more sites."

**Also, this month** - Housing provider Legal & General Affordable Homes has acquired 390 shared ownership homes from

[Back to top](#)

registered social landlord Orbit Group for nearly £35 million.

- Property industry body the British Property Federation has published a code of governance for for-profit affordable providers. The code establishes a set of standards, which embody and aim to promote good governance practice in the for-profit register provider sector in England.

- Sir Howard Bernstein, former chief executive of Manchester City Council and the driving force behind the city's regeneration, died last month at the age of 71.

- Retirement homes developer and operator Rangeford Villages has exchanged contracts on a site in Elstree, Hertfordshire, where it hopes to develop an integrated retirement community with 150 apartments and bungalows.

**[Read the article, Smit, J. \(2024\) 'Labour election win signals pro-development policy push, 5 July, in full.](#)**

(Please note that you will need to register to access these stories in full, although you can 'Register free for limited access.' Visit the [PlacemakingResource](#), scroll to the base of the homepage, and access route within 'Subscription and Registration').

### **Case Study: Repurposing to create a mixed use quarter**

- A historic London timber yard has been restored to create a meeting and event space, shops and homes.

Nestled in London's Belgravia, Newson's Yard is a development with a rich history. Constructed by builder John Newson in 1840, it became the capital's oldest continuously operating timber yard, surviving a fire in 1877 as well as the Blitz during World War 2.

With a vision to preserve its heritage for future generations and create a vibrant artisan community, in 2018 developer Grosvenor set out to transform Newson's Yard into 11,000 sq ft of curated retail experiences with regenerated traditional shop frontages, along with nine apartments.

The restoration respects the site's historical context while adding contemporary elements to bring its legacy into the twenty-first century.

**Challenges** - Sensitivity converting and repurposing the existing building proved the biggest challenge Newson's Yard has distinctive characteristics, so it was essential to work with the restrictions of the original structure to effectively meld the old with the new.

Design was by architect Stiff + Trevillion, with HDR Building Engineering Services delivering the building engineering services on the project. HDR's team was tasked with



[Back to top](#)

ensuring that the space remained clear of visible services, with the added complexity of undertaking works behind retained façades on the busy Pimlico Road.

Agility was a key priority, so that the scheme can evolve with occupiers' needs without being constrained in the types of businesses it can accommodate, and sustainability was another major part of futureproofing the space. Placemaking was a vital consideration too, to deliver a destination for all to enjoy, attract artisans and skilled craftspeople, and support the growth of the area while complementing the neighbourhood.

**Solutions** - HDR started by modelling six possible scenarios for the client of how the space could be maximised. As the centrepiece, the yard was designed to cater to different types of events and units, with the latter including everything from restaurants to furniture shops. Flexibility underscored each decision, and all units have plug-and-play connections so that any tenant can set up easily.

Three trenches run across the length of the scheme to hold utilities and, by overcoming multiple technical and spatial challenges, such as attenuation of air circulation or working to a limited heat projection plan, it was possible to keep the yard completely unencumbered by services. Meanwhile, the plant room has been enclosed and soundproofed on the first floor, an approach that maintains Belgravia's protected rooftop view. The 'clean' aesthetic and minimal interventions support the modern reinterpretation of this historically important space while showcasing its personality. The environmental credentials of the space add to its resilience and were strengthened through measures such as making it fully electric and using energy-efficient natural ventilation. This led to the retail part of the scheme achieving an Excellent rating under the BREEAM environmental scheme.

**Results** - The scheme was completed in 2022, revitalising an unloved industrial space and bringing a Belgravia landmark into a new age, cementing its position at the heart of the Pimlico Road Design District, which is celebrated for its art, interior design, furniture and antiques.

Newson's Yard is accessible through two arcades and sits under a striking glass roof, providing, providing an exciting and inclusive new meeting place that doubles as a venue for community events, with hand-picked retail. The pillars, roof timbers and brickwork of the yard have all been retained, and original markings can be seen on the walls. Working with materials such as timber and brick helped to cultivate a warm and welcoming feel, and the ample flow of natural light enhances the bright, airy environment and sense of openness.

A thoughtful approach, and close collaboration and alignment on goals among the whole project team from the earliest stages were central to the project's success.

[Back to top](#)

**Project team – Client:** Grosvenor; **Project manager:** Jackson Coles; **Architect:** Stiff + Trevillion; **Building services:** HDR Building Engineering Services; **Quantity surveyor:** Thomson Cole

**[Read the Case Study in full. Source: Smith, J \(2024\) 'Repurposing to create a mixed use quarter' in full.](#)**

(Please note that you will need to register to access these stories in full, although you can 'Register free for limited access.' Visit the [PlacemakingResource](#), scroll to the base of the homepage, and access route within 'Subscription and Registration').

## **Advice: Intensifying suburban neighbourhoods**

- There is potential to build more homes in the suburbs, but the increase in density needs to be carefully managed to retain the character of their location, finds the author of this article.

With government putting increasing pressure for more homes to be built in larger towns and cities their suburbs will need to accommodate significantly more new housing. A study published in April 2024 estimated that around 900,000 homes could be built in the lower density suburbs in outer London.

Here are three key ways to promote higher density housing development in suburban areas:

### **1. Promote new planning documents and design codes**

"Policies can help encourage high quality developments to come forward," says Russell Curtis, founding partner of architects RCKa, who carried out the latest study. He points to Croydon Council's Suburban Design Guide Supplementary Planning Document (SPD), which it introduced in 2019. It was withdrawn in 2022 but during that time 2000 homes were approved on smaller sites, with many developed by the local authority. "Over in Barnet, in north London, only a quarter of that were approved," Curtis says.

The smaller sites SPD drawn by Lewisham Council in south east London seeks to encourage higher density housing development, setting out key principles for new schemes on smaller sites. The council's aim is to give developers confidence that if they adhere to the principles, they have a better chance of getting planning approval.

### **2. Work at a local level**

"Local communities need to be onboard with proposals to increase the housing densities in their streets," says Alan Mace, associate professor at the London School of Economics, who has carried out research into attitudes to change in the suburbs. He says that "many proposals to increase housing density in the suburbs are opposed by local residents."

"Local opposition is less if the schemes are sensitively designed,

[Back to top](#)

But for communities to accept the increased development they need to appreciate the scale of housing need in their area – and that there will be benefits for them from the development,” Mace explains. “Residents are concerned that new development in their streets will affect the value of their homes.”

### **3. Integrate design of new homes into the neighbourhood**

“Any scheme for an existing suburb needs to start with a character study of the existing housing and streets so that new homes sit comfortably with them,” says Tibbalds’ Satchwell. “Even by redeveloping existing low-rise homes with two or three storey housing, the density can be increased with the better use of the site,” says David Rudlin, director of urban design at architect BDP. “It is important that change is managed so that it happens gradually.”

“Car parking in the suburbs can limit the density of new homes, taking up around 40 per cent of the site,” says Alex Butterfield, partner at Pollard Thomas Edwards (PTE).

[Further information and access the article, Kochan, B. \(2024\), ‘Advice: Intensifying suburban neighbourhoods’, 6 May in full.](#)

### **Review: City brownfield leisure development**

- The One Island Quarter development in Nottingham sets a high design standard for new development in its wider area, finds the author of this article.

One Island Quarter, previously known as Canal Turn, is located on the Nottingham Canal, just south east of Nottingham city centre. The new building contains a bar, restaurant and events space, which opened in late 2022. It sits at the western end of the Island Quarter, a 40-acre brownfield site which until recently successfully defied comprehensive development. Manufacturing stopped there in the 1980s. Some development had taken place on the western fringe of the site during the late 1990s and early 2000s but this was of modest architectural quality.

One Island Quarter is a pioneer within the overall development. It needed to shift perceptions of the area, which was seen by some as a neglected backwater, and set the quality benchmark for future phases of development. The site sits at the junction of the River Leen and the Nottingham Canal and associated wharves. Industrial development and railways arrived there in the mid-nineteenth century, followed by construction of gas works. Around this time, it became home to Boot’s the chemist, which developed a pharmaceutical manufacturing base there. Boot’s ceased manufacturing there in the late 1980s and sold the site to Nottingham City Council in the early 1990s.

Over the years there have been many proposals for the wider site.

**[Back to top](#)**

The levels of residual contamination, a legacy of the gas works, led to the focus on offices, retail and leisure rather than housing for new development. In 2016 the developer Conygar bought the site and a mixed-use masterplan for the area was approved in June 2020.

**Historic references** – The first phase of the outline scheme was originally intended to be a hotel, but because of the technical constraints and changing market conditions Conygar considered a food and beverage/leisure focus would be more appropriate for the pioneer building. The mix of uses provided the basis of the brief for One Island Quarter given to architect Jestico + Whiles which designed this first phase.

The site for the new building was raised above the canal with blue engineering bricks, which had originally been associated with the railway. To improve the connection between the proposed new building and the canal this wall was demolished, and the site development level dropped. Access to the canal tow path was improved. The exterior of the building is dominated by a tower feature. This acts as a landmark and identifies the western gateway to the future Island Quarter neighbourhood. The height of the tower is in contrast to the low-rise nature of the rest of the building. The building is unified by the use of a semi-circular arch motif in both the tower, the ground and second floor windows and much of the internal detailing. The tower and lower part of the building are constructed from red brick with rust effect cladding limited to the second floor. The materials and the arch refer to Nottingham's nineteenth century industrial architecture. Apparently, the referencing of the past by the architects has been so successful that some people have complimented the developer on the quality of the restoration. One Island Quarter is a distinctive building which responds well to its location and has succeeded remarkably quickly in transforming perceptions of this part of central Nottingham. Its bar, restaurant and internal and external events spaces work well and are popular. A destination has been established, which bodes well for later phases of the Island Quarter.

**[Further information and read the article, Phipps, J., 'Review: City brownfield leisure development,' 17 June, in full.](#)**

(Please note that you will need to register to access these stories in full, although you can 'Register free for limited access.' Visit the [PlacemakingResource](#), scroll to the base of the homepage, and access route within 'Subscription and Registration').

**Also: Analysis: Property prospects for 2023**

- The UK may be desyined for recession this year (2023), but proptery and construction industry forecasters see some bright spots among the gloom.

**[Smit, J \(2023\), 'Analysis: Property prospects for 2023'.](#)**

[Back to top](#)

## Education Latest [July 2024]

### [Access the latest Education news](#)

Young I (2024), '[AI can beat university students, study suggests](#)' – University exams taken by fake students using artificial intelligence beat those by real students and usually went undetected by markers, in a limited study. University of Reading researchers created 33 fictitious students and used AI tool ChatGPT to generate answers to module exams for an undergraduate psychology degree at the institution.

**For Education sector-related articles, see also:** UCEM student, Turner C (2022) '[Apprentice shares experience as she learns](#)', *Built Environment Journal*, London: RICS.  
#BuiltForApprenticeships #BuildingControl #Apprentice

[School forced into daily Raac inspection](#), and UCEM article (2023) '[The concrete crisis: what's being done to address RAAC risks](#)', 13<sup>th</sup> September. Reading: UCEM.

## BBC Latest – Climate [July 2024]

### [Access the BBC News, Latest Climate reality check](#)

#### [Satellite captures first-of-a-kind cloud image](#)

- A never-seen-before space image of the interior structure of a storm cloud has been released by the European and Japanese space agencies.

Their Earthcare satellite used a Doppler radar to capture the view. The data reveals the density of ice, snow, and rain in the cloud, as well as the speed with which these particles are falling to Earth. The novel Earthcare mission was launched in May to better understand how clouds influence the climate. Scientists expect the €850m (£725m) spacecraft's observations to also improve weather forecasts.

Access Amos J (2024) '[Satellite captures first-of-a-kind cloud image](#)', in full.

**Also:** - [A really simple guide to climate change](#). In addition, please visit the '[Sustainability Hub](#)' within *Knowledge Foundations* for further information and related articles.

## BBC Latest - Coronavirus – latest developments [July 2024]

### Is Covid now just a regular winter bug?

- There are more flu deaths than Covid ones last Winter ('23) – but for some, the fear remains.

- Warning that Covid will 'continue to surprise us'
- [New Covid and flu dashboard launched](#).

[Access the BBC Health News, incl. Latest Coronavirus pandemic news](#)

[Back to top](#)

### Related Link(s):

[Access the BBC News article entitled, 'AstraZeneca to withdraw Covid vaccine,' in full.](#)

Also:

[Living with Covid plan to restore our freedom - PM](#)

[What are the UK's 'Living with Covid' plans?](#)

### The evolution of building surveying education during COVID-19

**Case Study: UCEM** - In January and February 2020, as the pandemic was starting to gain momentum and spreading around the globe, universities in the UK were beginning to consider how to react. As a sector, UK higher education is relatively familiar with web-based methods of communication, teaching, and learning.

In fact, the University College of Estate Management (formerly the College of Estate Management) and the traditional home of RICS correspondence courses, operates their business totally online.

A lot of universities operate a Virtual Learning Environment (VLE) which allows them to communicate with their students and provides the opportunity to interact with them in terms of online courses and assessments, and as a depository for learning materials.

This allowed the students to revisit the materials to embed or reinforce their learning or to catch up if a session was missed. Common VLE's include Blackboard, WebCT, and Moodle. Their functionality and features are all relatively similar.

Although the physical libraries were closed, universities operate electronic libraries which offer access to a large number of electronic databases, and a growing number of books and journals, ensuring that the students and staff, can continue to access the majority of relevant information for their studies and research.

**Note:** Further information and the **UCEM e-Library Portrait** is provided later within *Knowledge Foundations*.

[Further information and access to the article 'The evolution of building surveying education during COVID-19', in full.](#)

[Access further information about UCEM's Supported Online Learning > e-Library.](#)

### Lessons Learned - Did COVID-19 accelerate construction's digital transformation?

- With many industry professionals forced to work remotely, is now the perfect time for construction to get up to speed with all

[Back to top](#)

things BIM and digital? *Construction Manager* magazine discusses if the coronavirus changed the way we work forever.

David Philp – Global BIM/MIC consultancy director, AECOM says, **“It’s an opportunity to rethink how we can use technology and innovate.” (Philp 2020)**

Mark Boyle – Global design direct, Robert Bird says, **‘Our digital processes lend themselves to remote working.’ (Boyle 2020)**, and Gary Fannon – Technology director, Turner and Townsend says, **‘Early digital adopters will be reaping the rewards.’ (Fannon 2020)**

Andrew Gamblen – Digital manager, Willmott Dixon says, **‘People will become more comfortable collaborating remotely.’ (Gamblen 2020)**

Richard Saxon – CBE Chairman of JCT, client adviser at Deploi BIM Strategies says, **“Wartime scenarios” will push the digital agenda.’ (Saxon 2020)**

**[Read the \*Construction Management\* \(formerly \*Construction Manager\*\) article ‘Will Covid-19 accelerate construction’s digital transformation’, in full.](#)**

**Related links:**

**What will the post-pandemic office look like?** - With remote working seemingly here to stay, anecdotal evidence suggests that firms are looking to cut office space by up to 40%. How is the workplace having to evolve to remain relevant?

**[Read the \*Construction Management\* article, ‘What will the post-pandemic office look like?’ in full.](#)**

**‘Generation Work from Home’ – the impact of default flexible working** - The UK government has announced proposals to make flexible working a ‘day one’ right for employees, as part of reforms to the Flexible Working Regulation 2014.

**[Read the Shoosmiths article, ‘Generation Work from Home’ – the impact of default flexible working’ in full.](#)**

**Free content related to Coronavirus, the management of epidemics and the wider impact on society**



© Emerald Publishing 2021

Emerald Publishing, one of the UCEM e-Library subscription services, have brought together a number of research

[Back to top](#)

resources related to the Coronavirus group of viruses, and epidemics more broadly.

Emerald collated research and the management of epidemics and made it freely available to assist practitioners and researchers who are working to tackle the current situation and likely consequences. Whilst these materials do not only relate to the current clinical challenges of Novel Coronavirus, but they may also provide relevant context to how the world reacted to other previous Coronavirus outbreaks (notably SARS) and epidemics.

**[Access Emerald Publishing's 'Coronavirus, the management of epidemics and the wider impact on society'](#)**

### **Covid-19 and the impact on business**

**HSTalks**

© Henry Stewart Talks Ltd 2021

HS Talks - Interviews with academics and experts from the business community, on the impact of the Covid-19 pandemic, are now available in the HS Talks 'Business & Management' collection that UCEM subscribes to.

1. **[The impact of Covid-19 on organisations](#)**
2. **[The impact of Covid-19 on psychological safety in the workplace](#)**
3. **[The impact of Covid-19 on cybersecurity and data privacy](#)**

### **[Latest News: Construction Management \(CM\) \(formerly Construction Manager\) \[June 2024\]](#)**

#### **[Stonehenge could be placed on UNESCO 'danger' list over A303 plans](#)**

- Stonehenge could be added to a list of 'in danger' World Heritage Sites due to plans to expand the nearby A303 and build a tunnel through the landscape.

The United Nations Educational, Scientific and Cultural Organisation (UNESCO) is proposing the site be added to the danger list. Other World Heritage Sites on the list include those in Afghanistan and Syria.

The £1.7bn proposed Stonehenge project involves creating a two-lane dual carriageway for the A303 in Wiltshire, including a two-mile tunnel 200m away from Stonehenge and up to 40m deep.

Further information, as well as access to read the article in full – Coyne K (2024) '**[Stonehenge could be placed on UNESCO 'danger' list over A303 plans](#)**', *Construction Management* [online], 26 June 2024. Available at:

<https://constructionmanagement.co.uk/stonehenge-could-be-placed-on-unesco-danger-list-over-a303-plans/> [accessed 31 May 2024].



[Back to top](#)**Also:**

Roger, N. (2024) '[CIOB updates code of practice for programme management](#)', *Construction Management* [online], (05/24)

Mann, W. (2023) '[Reinforced autoclaved aerated concrete \(RAAC\): key questions answered](#)', *Construction Management* [online], (09/23). Useful RAAC guidance is shared, incl.:

- [Institution for Structural Engineers: RAAC investigation and assessment guidance page.](#)
- [Office of Government Property: RAAC safety briefing notice.](#)

**Related article:**

UCEM article (2023) '[The concrete crisis: what's being done to address RAAC risks](#)', 13<sup>th</sup> September. Reading: UCEM.

**Latest News: Global Construction Review (GCR) [July 2024]**

**Foster unveils designs for California high speed rail stations** –  
- Foster + Partners has released its designs for four stations in the Central Valley section of California's Los Angeles-to-San Francisco high-speed rail line.

The stations, which were designed in conjunction with UK consulting engineer Arup, were influenced by "open House" sessions, where the consultants worked alongside communities, businesses, agencies and other key stakeholders.

Access and read the article in full, Quirke, J., (2024) '[Foster unveils for California high speed rail stations](#)', *Global Construction Review* [online], 28 June. Available at: [www.globalconstructionreview.com/foster-partners-releases-its-designs-california-high-speed-rail-stations/](http://www.globalconstructionreview.com/foster-partners-releases-its-designs-california-high-speed-rail-stations/) [accessed 28 June 2024]

**Shoosmiths UK law firm Insights and Articles**

- Read the latest insights, articles, and commentary from Shoosmiths UK law firm or explore their content library, or listen to the latest podcasts **[July 2024]** surrounding sectors such as **Living (Sector) incl. Real Estate** covering:

- [Carbon Reduction Schedule – Cabinet Office guidance.](#)
- Also: [Shoosmiths part of new commission to tackle England's housing shortage](#), (03/24), &
- [One step closer to the new Building Safety Levy](#) (02/24).

**Court of Session upholds planning decision, with tilted balance 'now a thing of the past'** - On 3 May 2023, the Court of Session upheld the Scottish Ministers' decision to refuse Miller Homes Ltd planning permission for 250 homes in West Calder.

[Back to top](#)

### **How developers can prepare now for the Building Safety Act series:**

#### **How developers can prepare now for the Building Safety Act: Part 1 of 3**

The Building Safety Act received Royal Assent on 28 April 2022. With aspect of the new regime unclear, this series of articles looks at what steps developers can take now.

#### **How developers can prepare now for the Building Safety Act: Part 2 of 3**

In Part 2, Shoosmiths discuss the duty holder regime and look at the steps developers can take now to prepare.

#### **How developers can prepare now for the Building Safety Act: Part 3 of 3**

In this final part of this series, Shoosmiths take a look at the new gateway regime for higher risk buildings.

Keywords – Real estate, ESG, New How Perspectives, New How,

### **The future of build-to-rent market Real Estate Podcast series Podcast – Government policy BTR (Build to Rent)**

#### **The future of the BTR market from Shoosmiths' Living team:**

##### **Podcast series #1 – The future of BTR (Build to Rent)**

Issues discussed in this podcast include: Performance of the sector; Rent collection rates; Challenges of lockdown restrictions; How buildings and amenity space will change as a result of the pandemic; and where the market is going.

##### **Podcast series #2 – The future of BTR (Build to Rent)**

Issues discussed in this podcast include: Ongoing attractiveness of the sector; Top three things to look for in a BTR scheme; Future challenges for BTR; The role of technology, and BTR housing.

##### **Podcast series #3 – The future of BTR (Build-to-Rent)**

In this podcast, the last in this series, issues discussed include: Planning reforms; Permitted development rights; Rise of residential in the high street; Fire Safety; and Rent controls / regulations.

### **The Pathway to Lifelong Education: Reforming the UK's Skills System**

- The UK has a longstanding skills problems which is impacting on economic growth. Adult participation in learning has declined, particularly among part-time students, while fewer people in work are taking up training to reskill or upskill. More

[Back to top](#)

generally, there is a shortfall in vocation and higher technical qualifications.

In this first report, with Ashley Wheaton, Principal, University College of Estate Management acknowledged as one of the contributing experts, the Lifelong Education Commission seeks to recommend how the barriers to adult learning can be removed; what future investment is needed to support this; and what change is needed to ensure the maximum flexibility that will benefit learners and deliver on the promise of a whole system change for lifelong education.

**The Report makes a series of recommendations for reform, including:**

- A single source of careers advice, to 'professionalise' and regulate careers information, advice and guidance
- Means-tested Maintenance Grants for learners over and above the Lifelong Loan Entitlement, in order to subsidise costs and encourage uptake, particularly among those for whom debt is a barrier
- The abolition of the Equivalent or Lower Qualification (ELQ) rules, to support retraining at higher levels
- Extending the Apprenticeship Levy to cover a wide range of high- quality training, including short modular courses, in order to provide additional flexibility and incentivise employer investment in skills training
- Stronger HE-FE partnerships to provide integrated pathways to higher-level skills; and alignment with industry and online providers to enable better coordination between schools, colleges, universities, and employers.
- Reform of the regulatory framework to simplify the jurisdiction between multiple qualification bodies;
- Learning lessons from Scotland, where 'articulation agreements' offer clear routes between FE and HE allowing students with Higher National Certificates and Diplomas to access the second or third years of degree programmes.

**Access the summary and report, 'The Pathway to Lifelong Education: Reforming the UK's Skills System' in full.**

**Related Links:**

FE news.co.uk (2021) '[Reforming the UK's Skills System – First Report from the Lifelong Education Commission](#)' [online]. Available at: [www.fenews.co.uk](http://www.fenews.co.uk) [accessed 8 October 2021]

**Learning and teaching reimagined** - Exploring the 2020 experience as well as the changing aspirations of the nature and shape of learning and teaching for the future.

[Back to top](#)

Maguire D, Dale L, and Pauli M (2020) *[Learning and teaching reimagined: a new dawn for higher education?](#)* Bristol: JISC

## **New guidance from CIRIA - Construction Industry Research and Information Association**

**Latest update [July 2024]** CIRIA is pleased to announce new [free CIRIA practice guidance](#) and publications that include:

### **[Code of practice for property flood resilience \(C790\)](#)** –

This guidance provides confidence on the use of the standards within the code of practice that provides a benchmark for those procuring and delivering property flood resilience (PFR).

### **[The Management of advanced numerical modelling in geotechnical modelling \(C791\)](#)** -

This guide provides a framework for those who oversee the process, provide the information needed for this task and use the results of the numerical modelling.

### **[Methodology for quantifying the benefits of offsite construction \(C792\)](#)** -

This guidance proposes a framework for comparing construction approaches, making it possible to keep consistent records across projects and identify all the possible benefits available.

**Other guides include:**

### **[Retrofitting ground gas protection measure \(C795\)](#)**

### **[Grouted anchors and soil nails \(C794\)](#)**

## **Grenfell Tower Inquiry – latest developments**

- The Grenfell Tower Inquiry was created to examine the circumstances leading up to and surrounding the fire at Grenfell Tower on the night of 14 June 2017.

### **[Latest update \[July 2024\]](#)**

**[End of Phase 2 Hearings](#)** – The Inquiry concluded hearings from Phase 2 and is closed to the public. The Inquiry Panel will continue preparing the final report.

**Phase 1 Report** – The Inquiry has published its report on Phase 1 of its investigations.

**Also: Latest update from the Inquiry –**

- Seventh anniversary statement – The Inquiry Panel made a statement for the 7<sup>th</sup> anniversary of the fire at Grenfell Tower.
- Publication of the Phase 2 Report.
- **April 2024 Newsletter** – The Inquiry has published an update on its work.

**[Read further information from the ‘Grenfell Tower Inquiry’ website.](#)**

[Back to top](#)

### Related Links:

By visiting the 'Built Environment Research' section of *Knowledge Foundations* and House of Commons Library, you will note under 'Housing and Planning' and within 'Social policy,' the top research briefings include - **The Cladding External Wall System (EWS)**.

### Also:

#### **Cladding: Panels failed fire tests 13 years before Grenfell -**

Leaked test results suggest the government and construction industry had early evidence of the dangers posed by cladding, 13 years before the Grenfell Tower fire.

Panels, commonly used on buildings in the UK, failed fire tests carried out in 2004. The Inquiry venue at 13 Bishop's Bridge Road, London, W2 6BU. The results marked "Commercial in confidence," were circulated within an industry advisory group. They were recently passed to the BBC (see publication date) and, until now, never made public. Hundreds of thousands of flat owners are now threatened with large bills because of construction materials which pose a risk in fires.

The 2004 results were among the first from a British test of full-scale building systems, developed in the late 1990s when there were growing concerns in Parliament about the risks of cladding. The tests were part of research commissioned the then Labour government to determine what standards building systems should have to meet.

Symonds T (2021) '[Cladding: Panels failed fire tests 13 years before Grenfell](#)', *BBC News* [online], 16 September. Available at: [www.bbc.co.uk/news/uk-58584348](http://www.bbc.co.uk/news/uk-58584348) [accessed 23 February 2022]

### Related Topics:

- [Construction industry](#)
- [UK fire safety](#)
- [Grenfell Tower fire](#)
- [Grenfell Tower Inquiry](#)

### Also:

[RICS Fire safety Hub \[online\]](#) - containing advice for the public, building owners, landlords, corporate occupiers and RICS professionals and information on fire safety on buildings with external wall systems.

[Shoosmiths Insights](#) [online] - [Lessons from Grenfell: New fire safety responsibilities](#)

Amendments to the Regulatory Reform (Fire Safety) Order 2005 will add to the existing responsibilities of Responsible Persons under the Order which were expanded earlier this year (2023) by The Fire Safety (England) Regulations 2021[1].

[Back to top](#)

## Government details fire safety-related changes to planning system

- The government has released details of new requirements in the planning system to bolster fire safety in high-rise residential buildings, in response to the Grenfell Tower Fire.

The changes come in the Ministry for Housing, Communities and Local Government's (MHCLG) plans to introduce '[planning gateway one](#)', which it said would deliver on one of Dame Judith Hackitt's recommendations following her independent review of Building Regulations and fire safety.

The new requirements aim to ensure fire safety matters as they relate to land use planning are incorporated at the planning stage for schemes that involve high-rise residential buildings.

The changes, which came into effect from **1 August 2021** will:

- involve the Health and Safety Executive (HSE) becoming a statutory consultee before permission is granted for development which involves or is likely to involve a high-rise residential building.
- require relevant applications for planning permission to include a fire statement to ensure applicants have considered fire safety issues as they relate to land use planning matters such as layout and access.
- help inform effective decision-making by local planning authorities or the secretary of state so that those decisions reflect and respond to the needs of the local community.

The new requirements will be introduced by making amendments to the Town and Country Planning (Development Management Procedure) (England) Order 2015.

As announced in the Queen's Speech (11 May), the Building Safety Bill is also expected to be introduced this year, which will establish a new building safety regime in England.

[Further information and access to the \*Construction Manager\* article, 'Government details fire safety-related changes to planning system,' in full.](#)

## [RIBA Stirling Prize 2023](#)

The RIBA Stirling Prize is the UK's most prestigious architecture award. The award is given to the architect of the building thought to be the most significant of the year for the evolution of architecture and the built environment.

**RIBA Stirling Prize winner 2023: John Morden Centre by Mae.** The [John Modern Centre](#) by Mae has been named winner of The Royal Institute of British Architects (RIBA) Stirling Prize 2023, awarded to the UK's best new building.

[Back to top](#)

Founded in 1695, Modern College is a charity dedicated to providing older people in need with a home for life, including the provision of residential and nursing care. Further information (including a video of the project) is available via RIBA, [Architecture.com](#) [online].

### **Skills Agenda: Concerns for Skills Shortages in the 21<sup>st</sup> Century: A Review into the Construction Industry, Australia**

This research paper addresses the underlying, influential factors concerning skills shortages in the Australian construction industry. The influential factors addressed include funding, training statistics, employer expectations, financial limitations, Industrial Relations and immigration.



UTS ePRESS is Open Access and licensed under [Creative Commons Attribution 4.0 International Licence](#).

[Read the full research report 'Concerns for Skills Shortages in the 21<sup>st</sup> Century](#).

### **Tomorrow's Engineers**



© EngineeringUK 2021

Tomorrow's Engineers brings together resources and evidence to support the engineering community in getting the most out of their engagement activity. It includes information and guidance on a range of topics curated from across the STEM community.

[Access the Tomorrow's Engineers website](#)

### **RICS insight report: [Women in surveying](#)**

- Women in surveying and the wider built environment sector face recurring challenges through their careers due to discrimination, bias (whether unconscious or intentional) and inequity in opportunities and systemic practices. This '23 [Women in Survey insight report](#) analyses existing RISC membership data and the results of their flagship 2022 Survey of women in the profession.

RICS's aim is to offer insights on why women are not progressing in their careers and remaining in the profession. This will enable individuals, teams and organisations to reflect and further examine their own behaviours, policies and practices, and more importantly, begin their journey in taking positive action to deliver change with lasting impact.

Also: [Access Women in construction: building a career in a challenging environment](#). Twelve case studies of women working in the construction industry and their experiences.

[Back to top](#)

## **RICS Market surveys – leading indicators in the real estate industry**

**Market surveys** from the Royal Institution of Chartered Surveyors (RICS) include:

- **UK Residential Market Survey** – Used by government and key institutions, the Resi. Market Survey is a key indicator of conditions in UK residential sales and lettings.
- **Hong Kong Residential Market Survey** – The Hong Kong Residential Market Survey is a leading sentiment indicator of conditions in the Hong Kong residential sales and lettings markets.
- **UK & Global Construction Monitor** – The leading sentiment indicator of the construction markets.
- **UK Facilities Management Survey** – The UK Facilities Management survey is a quarterly indicator of activity and sentiment across the facilities management industry.
- **UK & Global Commercial Property Monitors** – The global commercial property monitors are leading indicators of conditions in commercial property occupier and investor markets around the world.
- **UK Economy and Property Market Update** – The Economy and Property Market Update is a new quarterly assessment of key macro, real estate and construction trends.
- **Market Surveys and Economic Analysis** – Used by governments, central banks, investors and other key stakeholders across the built environment, RICS market surveys provide a source of market intelligence.

**Note:** Further updates are provided within the 'Latest Property and Construction Statistics' section of *Knowledge Foundations*.

## **RICS – The Future of Surveying**

- We know the challenges facing the built environment and the surveying profession – now it's time to act. We know the challenges facing the built environment and the surveying profession – now it's time to tackle them.

For over 150 years, RICS has led our profession through change, enabling our members to take advantage of the opportunities and manage the risks it presents. This change is now happening faster than ever, requiring us to think strategically about how we deploy our expertise and resource. To continue to provide leadership, we are constantly assessing our role as a standard setter, regulator, educator, and global professional body – to deliver confidence to governments, markets, and the public.

**RICS Futures Report 2020** is our action agenda to keep up in a changing world.



[Back to top](#)

Access and download the Futures report to read RICS' full agenda for effecting change and responding to the biggest issues facing the natural and built environment, in full.

[Read the article, 'Future of Surveying' and gain access to the Futures report in full.](#)

## **GOV.UK, National Statistics - UK House Price Index: reports [Last updated June 2024]**

- The UK House Price Index is a National Statistic. The [Northern Ireland House Price Index](#) is calculated and published quarterly.

The UK House Price Index (UK HPI) captures changes in the value of residential properties. The UK HPI uses sales data collected on residential housing transactions, whether for cash or with a mortgage.

### **Contents include the following:**

- March 2024
- About the UK HPI
- Archived reports and data

Data is available at a national and regional level, as well as counties, local authorities, and London boroughs.

### **The summary report contains:**

- Headline statistics
- The economic statement
- Price changes
- Sales volumes
- The property status
- The buyer status for Great Britain (excludes Northern Ireland)
- The funding status for Great Britain (excludes Northern Ireland)
- Housing transactions distributions

[Read the GOV.UK, National Statistics: 'House Price Index: reports,' Last Updated 14 June' in full.](#)

### **Related Content:**

1. UK House Price Index: data downloads September 2022
2. UK House Price Index: reports 2022
3. UK House Price Index: data downloads October 2022
4. UK House Price Index for October 2022
5. UK House Price Index

### **Collection:**

[Land registration: Data](#)

[Back to top](#)

## Tackling mental health and wellbeing within the construction industry



© MHFA England

The construction industry reports some of the highest levels of workplace mental ill health.

Over the last three years (see publication date) Mental Health First Aid (MHFA) England has been working with Building Mental Health, the Construction Industry Training Board (CITB) and the Lighthouse Club Construction Industry Charity to create a freely available, industry-wide framework and charter to tackle the mental health crisis in the construction industry.

[Find out more about the social value of the programme](#)

### Related Links:

#### **Q&A with Harold Samuel Research Prize (HSRP) recipient, Dr Katharine van Someren**

Research is a fundamental aspect of university life. It is used to gain a further understanding for assignments and dissertations and by academics to explore topics that will broaden our understanding of society and the world around us. The HSRP is an annual opportunity for those interested in the building environment to submit a research proposal on a topic that could offer sector-changing insights.

What is the relationship between job and financial security and mental health in the construction workplace? UCEM spoke with HSRP recipient Dr Katharine van Someren, about her research on UK construction workplace poverty. You can access [UK construction workplace poverty: the impact of financial and job insecurity on mental health](#) on UCEM's publication page to learn more about Katharine's research.

Access the article '[Q&A Harold Samuel Research Prize \(HSRP\) recipient, Dr Katharine van Someren](#)' in full.

#### **UCEM mental health strategy**

UCEM published its first mental health strategy on 10 May 2021.

The strategy is designed to benefit both UCEM students and staff, having been written with input from both stakeholder groups.

[Back to top](#)

At the core of the document is the vision which states: UCEM will take a whole institution approach to develop one community that enables students of all levels along with staff to prioritise mental health and wellbeing.

**There are five strategic aims supporting this vision which are:**

1. to create a supportive whole university community that promotes positive mental health, and ensures mental health is a key strategic priority.
2. to ensure the UCEM community is informed and aware of the importance of good mental health and works to tackle the stigma surrounding mental health.
3. to ensure appropriate and timely support is provided to those who need it.
4. to develop links with external support services and stakeholders
5. to use data to evaluate and monitor the effectiveness of mental health interventions and inform future strategic development.

For more details, take a look at [UCEM's mental health strategy document](#). Access the article '[UCEM launches mental health strategy](#)' in full.

### **Understanding Mental Health in the Built Environment**

In May 2020, the CIOB published their report on Understanding Mental Health in the Built Environment. The report, which surveyed people across the globe, presented harrowing statistics of high numbers of workers experiencing extreme levels of stress over a prolonged period, with many people reporting that they had considered taking their own life in 2019.

Access the CIOB's latest report *Understanding Mental Health in the Built Environment*, including the results from the CIOB survey of over 2,000 professionals. [Access CIOB online Policy Portal, & 'CIOB surveys the sector to gather data on mental health & stress'](#)

### **How can buildings have positive impact on wellbeing?**

BSRIA's Henry Lawson discusses the importance of designing buildings that promote 'Wellbeing.' The theory sounds compelling but in practice, creating such building is complex.

[Access and read 'How can buildings have positive impact on wellbeing' in full.](#)

[Read \*Construction Manager\* article\(s\) entitled, 'Samaritans to work with roofers on mental health' in full,](#) and

[Banner artwork highlights construction suicides](#)

### **Sustainable outcomes for buildings**

The Royal Institute of British Architects (RIBA) has published

[Back to top](#)

guidance on targeting, designing, and evaluating sustainable outcomes for buildings, defining concise measurable set of eight sustainable outcomes that correspond to key UN Sustainable Development Goals and can be delivered on building projects of all scales.

### **Access the RIBA Sustainable Outcomes Guide**

## **National Trust planning principles**

**National Trust (NT)**, a charity that works to preserve and protect historic places and spaces – for ever for everyone.

The National Trust protect historic houses, gardens, mills, coastline, forests, woods, fens, beaches, farmland, moorland, islands, archaeological remains, nature reserves, villages, and pubs. While they are very passionate about open spaces and historic places, they also work hard in other areas too, including the environment, food, farming, transport, and heritage – to name but a few.

Most of the work they do though is affected by much wider global issues, which is why their interests extend far beyond just bricks and mortar.

## **National Trust (NT) – “Our planning principles”**

The National Trust principles are used to guide them in their decision-making on the way land is developed and managed and include:

1. **Seeking to influence** – The NT seek to influence the planning system at local, regional, and national levels,
2. **Supporting spatial planning** – The NT support spatial planning which takes a holistic approach to its environment and its resources,
3. **Sensible management** – The NT promotes the wise management of the natural environment and built and cultural heritage,
4. **Protecting our environment** – The NT will seek to protect wild and remote landscapes from built development or urbanisation.
5. **Using property management plans** – In managing its land through management plans, the NT will support and help to achieve objectives,
6. **Objecting to proposals, where appropriate** – The NT object to land use or marine-based proposals that have a significant adverse impact on its properties and their settings and context, or in its wider interests.
7. **Using a sustainable construction approach** – When proposing development on their land to meet justified needs, the NT will use a sustainable construction approach. This will include the following:

[Back to top](#)

- Minimising resource use and generation of waste,
- Being energy efficient,
- Minimising or preventing all types of pollution and risk of flooding,
- Safeguarding important wildlife, landscape, and historic interests,
- Respecting local/regional distinctiveness, supporting local sources for goods and services where practical, and
- Encouraging community involvement and access.

### **The National Trusts' conservation process**

The NT have developed the following criteria to ensure online suitable projects proceed:

- Adhere to the policies in the relevant local plan,
- Deliver energy efficiency and reduce carbon dioxide emissions,
- Build in harmony with the local environment, built and natural,
- Involve the local community throughout the process.

#### **[Read the National Trust Land use and planning.](#)**

**[Access the National Trust website and our cause](#)** (including Nature and climate, History and heritage, and Communities).

### **Foster + Partners Projects**

Foster + Partners Projects – one of the most innovative architecture and integrated design practices in the world. Over the past four decades the practice has pioneered a sustainable approach to architecture through a strikingly wide range of work, from urban masterplans, public infrastructure, airports, civil and cultural buildings, offices and workplaces to private houses and product design. By visiting their website, you can gain further information about their current and past work, upcoming projects, and gain access to their-

- Image gallery,
- Sketches and drawings,
- Construction, - Facts and Figures, and
- Project downloads.

#### **[Access Foster + Partners Projects](#)**

### **New RIBA Plan of work 2020**

**RIBA Plan of Work 2020.** This blog takes a look at the new RIBA Plan of Work 2020.

**What is the RIBA Plan of Work?** The Royal Institute of British Architects (RIBA) first published the RIBA Plan of Work.

[Back to top](#)

in 1963. It originally provided a matrix to show the roles of participants in the design and construction processes.

It has since been updated in several editions, most recently in 2020. This has allowed it to adapt to the complexity of modern projects, industry demands and legislative and regulatory requirements.

**What changed in 2020?** In 2020, key changes were made to reflect the importance of sustainability and Building Information Modelling (BIM) in construction. The Plan of Work now also incorporates issues such as digitisation of the industry, Modern Methods of Construction, ethical issues, the value of aftercare and timing relating to planning applications and procurement.

This has included restructuring and renaming of the work stages from the 2013 Plan of Work:

**0 – Strategic definition** – no change

**1 – Preparation and briefing** – brief amended to briefing

**2 – Concept design** – no change

**3 – Spatial coordination** – formerly Developed design

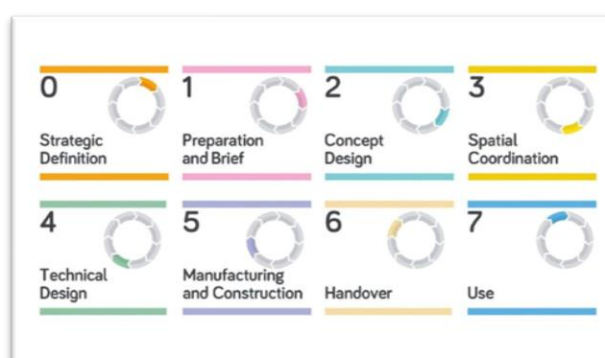
**4 – Technical design** – no change

**5 – Manufacturing and construction** – formerly Construction

**6 – Handover** – formerly Handover and close out

**7 – Use** – formerly in use

**RIBA Plan of Work 2020:**



© RIBA 2020

Source: Royal Institute of British Architects (2020) 'RIBA Plan of Work'

**Note:** The author of this blog, Jen Lemen-Hogarth is an Associate Tutor – UCEM and Partner – Property Elite.

**[Access Property Elite's, Building Better Property Professionals, 'New RIBA Plan of Work 2020' \[Blog\], in full](#)**

[Back to top](#)

## **Autodesk and CIOB map the digital construction journey**

Autodesk and the Chartered Institute of Building (CIOB) have prepared an infographic to help construction businesses visualise their position on the digital journey.

**[Access more information, view the infographic and read the article, entitled ‘Autodesk and CIOB map the digital construction journey’ in full.](#)**

**[Access further information from CIOB ‘Digital Construction’](#)**

- Digital technologies are now an integral part of our built environment. The choice is not when or if built assets will use technology, but rather how much will be used.

## **Building Information Modelling (BIM)**

**[UK BIM Framework – BIM Standards, Guides and Resources](#)** - the overarching approach to implementing BIM in the UK, brought together by UK BIM Alliance, BSI and CDBB. The guidance is structured as indicated below:

**Guidance Part 1** and **Guidance Parts A-F** support the implementation of the overall published ISO 19650 series. **Guidance Part 2 and 3** pick up on content specific to ISO 19650-2 and ISO 19650-3, respectively. Additional **guidance** is also available as part of the **UK BIM Framework** to support the transition to ISO 19650 and Government Soft Landings

**[Access UK BIM Framework - Resources](#)**

**[Latest BIMPlus News and Projects](#)**

**[July 2024] –**

- **Projects – Sir Robert McAlpine’s role in the world’s smartest museum, 31 May 2024.**

- Can a heritage museum be smart too? That’s the plan for the new Museum of London in London’s historic Smithfield market, opening in 2026 under the name of London Museum.

The **[Museum of London](#)** has ambitious goals for its new facility, London Museum, at Smithfield market near Farringdon, home to the city’s meat markets over several centuries. It wants to be the world’s smartest museum.

“It’s about building a new museum which is ready for the future, with the least environmental impact possible,” explains the museum’s technical lead, Steve Watson.

The smart building will collect data of every kind of AI algorithms to analyse, spotting glitches or faults or suggesting new ways to run systems more efficiently. “It provides the best chance for us to model, manage and control the environment,

[Back to top](#)

while emitting the least carbon possible,” says Watson. “I don’t think we can do that without building a smart building.”

Watson sees a time when individuals will be totting up their carbon footprints and planning trips accordingly. “Visitors will be making choices about what they do based on their carbon impact.”

In practice, which means that all the operating systems, building services and technology will be heavily integrated, says Watson. “Typically, software systems that run our buildings are in silos. While that’s good for construction, when a building goes into operation, that’s a major problem.”

Overseeing that integration is [Sir Robert McAlpine](#), appointed under a construction management contract to oversee the works from June 2023.

**London Museum**

Value: **£437m (London Museum project total)**

Construction manager: **Sir Robert McAlpine**

Architects: **Stanton Williams Associates, Asif Khan and Julian Harrap Architects**

Structural engineer: **AKT II**

Cost management: **Gardiner & Theobald**

**Other areas covered in this article include the following:**

Smart puzzle - The big puzzle for this project is not just how to accommodate the building’s services and systems among the existing, often irregular, fabric of the building. It is how to transfer the data relating to those elements into asset management software that will optimise the running of the museum. **Also:** Smart museum approach, and New technology, are covered.

Gain access to further information and full access to the project case study article by Smith, K., (2024), entitled, [‘\*\*Asir Robert McAlpine’s role in the world’s smartest museum\*\*’](#), BIMPLUS Projects.

**Other BIMPLUS Projects include:**

- **Projects – Airedale hospital tackles RAAC with GIS-based digital twin**, 25 March 2024.  
  
- West Yorkshire-based Airedale General Hospital is saving time monitoring its issues with reinforced autoclaved aerated concrete (RAAC) thanks to a digital twin developed by BIS Consult.
- **Projects – The digital transformation of Auckland’s water works**, 25 March 2024.



[Back to top](#)

- The agency tasked with surveying 45,000 bridges in France in just 18 months turned to Esri's ArcGIS platform to facilitate its work.

Gain access to further information and full access to the project case study article by Farkadi, F. and Webster, S. (2024), entitled, '[The digital transformation of Auckland's water works](#)', BIMPLUS Projects.

- **Projects – How to handle data from the survey of 45,000 bridges**, 19 March 2024.

- The agency tasked with surveying 45,000 bridges in France in just 18 months turned to Esri's ArcGIS platform to facilitate its work.

Gain access to further information and full access to the project case study article by Koeppel, I. (2023), entitled, '[How to handle data from the survey of 45,000 bridges](#)', BIMPLUS Projects.

- **Projects – BIM's role in bungee jumping**, 23 January 2024.

- 180kph winds, monsoon rain, landslides: designing and building the tallest bungee tower in the Himalayas was just as challenging as jumping off the structure when complete. Jana Miller of Bentley Systems spoke to the engineer that took on both challenges.

Gain access to further information and full access to the project case study article by Miller, J., (2023), entitled, '[BIM's role in bungee jumping](#)', BIMPLUS Projects.

- **Projects – Mace and Glider at 40 Leadenhall Street: from delay to digital exemplar**, 25 September 2023.

- A significant delay to starting on site allowed Mace and Glider to turn what would have been simply a challenging project in the City into a digital exemplar.

Gain access to further information and full access to the project case study article by Stanton, J., (2023), entitled, '[Mace and Glider at 40 Leadenhall Street: from delay to digital exemplar](#)', BIMPLUS Projects.

- **Projects – Digital collaboration key to Manchester campus success**, 15 August 2023.

- A joint collaboration between Bond Bryan and Simpson Haugh has delivered a state-of-the-art city centre campus for The Manchester College and University Centre (UCEN) Manchester and digital played a central role.

Gain access to further information and full access to the project case study by Stanton, J., (2023), entitled, '[Digital collaboration key to Manchester campus success](#)', BIMPLUS Projects.

[Back to top](#)

## **BIM in action: 2020's top five projects**

22 December 2020

- Hospitals, housing, hotels: **BIMPLUS** covered case studies of BIM in action in all sorts of construction projects across the world. Given what happened in 2020, it's not surprising that three of the most read case studies focus on hospitals.

**2020's top five projects** (and all covered within this and previous issues of *Knowledge Foundations*) incl.

1. [Sisk reap rewards of high-tech approach at Wembley](#)
2. [Finland's Hospital Nova uses VR to involve staff in building](#)
3. [NHS Nightingale Hospital, East London – how BIM played its part](#)
4. [Mace uses AI tech on Mayfair project to meet covid-19 safety challenges.](#)
5. [AI tracks work quality at Norway's Stavenger Hospital.](#)

[Access BIM+ that include project entitled, 'BIM in action: 2020's top five projects' available in full.](#)

### **Related BIM+ Projects**

- **(1) Project: [John Sisk relies on BIM best practice to deliver Malmo data centre](#), 2<sup>nd</sup> November 2020.**

- John Sisk & Son is nearing completion on a data centre project in Malmo, Sweden. Adopting BIM best practice has been crucial to keep construction on programme given a fast-tracked programme amid the Covid-19 pandemic.

The John Sisk & Son team has nearly 40 years of experience in data centre construction and has brought a digital project delivery approach to the Malmo project.

#### **Sisk highlights some significant outcomes:**

- The Sisk team-built dashboards that stored live clash trend reports to track progress weekly, resulting in a 50% efficiency increase in the BIM management process compared to traditional, manual methods of construction coordination without the automating power of the cloud.
- The tight integration between BIM 360 Docs, Microsoft Power BI, and Sisk's own "Design Changes Control" dashboards provided the commercial teams with a faster way to visualise the cost and/or schedule impacts, reducing the overall take-off by a potential 40%
- By using BIM 360, the project continued uninterrupted as construction continued in Sweden during the Covid-19 pandemic.

[Back to top](#)

- **(2) Project: [Finland's Hospital Nova uses VR to involve staff in building](#), 28<sup>th</sup> April 2020.**

Lead Contractor: The Central Finland Health Care District  
BIM Tools: Tridify

- Innovative processes have been used in the co-design of Finland's new Hospital Nova using BIM models and involving more than 350 staff.

- **(3) Project: [NHS Nightingale Hospital, East London – how BIM played its part](#), 5th May 2020.**

Client: Barts Health NHS Trust, Royal Free London NHS Foundation Trust

Lead Contractor: Lead Designer: BDF

BIM Tools: Autodesk Revit

- The UK's newest (see publication date) and largest hospital, based at the ExCel conference centre in London's Docklands, is designed to care for up to 4,000 people affected by Covid-19. The hospital is now in standby mode and will be used should cases in the London area rise again.

- **(4) Project: [Mace use AI tech on Mayfair project to meet Covid-19 safety challenges](#), 1<sup>st</sup> October 2020**

- Work was already underway on Lodha's No 1 Grosvenor Square flagship project when the lockdown and then social distancing added to the normal construction challenges.

Client: Lodha; Main contractor: Mace

Balancing the many requirements of a building project – cash flow, cost, quality, and timelines – is always a significant challenge for project leadership. The Covid-19 pandemic made the balancing act even more intense, costing projects valuable time at the start of lockdown and requiring adjustments to ensure the health and safety of all personnel on site as production restarted.

- **(5) Project: [AI tracks work quality at Norway's Stavanger Hospital](#), 21<sup>st</sup> June 2020.**

Client: Stavanger University Hospital

BIM Tools: 100% International open standards, compatible with Revit, ArchiCAD, Solibri and others

- Oslo-based BIM developer Imeroso has been given responsibility to monitor work progress in one of the biggest public construction projects in Scandinavia.

**[Access the Chartered Institute of Building's \(CIOB\), BIM+ articles, projects, case studies and more, in full.](#)**

**Latest BIM news – 10<sup>th</sup> annual BIM report 2020 available**  
**NBS 10<sup>th</sup> National BIM Report 2020** - It illustrates how usage and perceptions of BIM have changed since 2011, progress made as an industry, and anticipated changes in the next decade.

### **Construction Information Service (CIS) Insights**

The latest edition [**July 2024**] of NBS CIS *Insights* focuses on – **Designing for sustainability: Creating a healthy environment at work, school and play**, and covers – • Sustainable construction as viewed through the lens of UN Goals 03, 08, and 11, • How to design and specify in a way that supports sustainable cities and communities, and • Our part in promoting good health, well-being and decent work.

[Back to top](#)



## Property and Construction Statistics

### **Latest Property and Construction Statistics from RICS:**

- Input from RICS Professionals ensure RICS surveys are leading indicators in the real estate industry.

#### **Latest: Market Surveys - RICS [July 2024]**

#### **UK Economy and Property Market Update, May 2024**

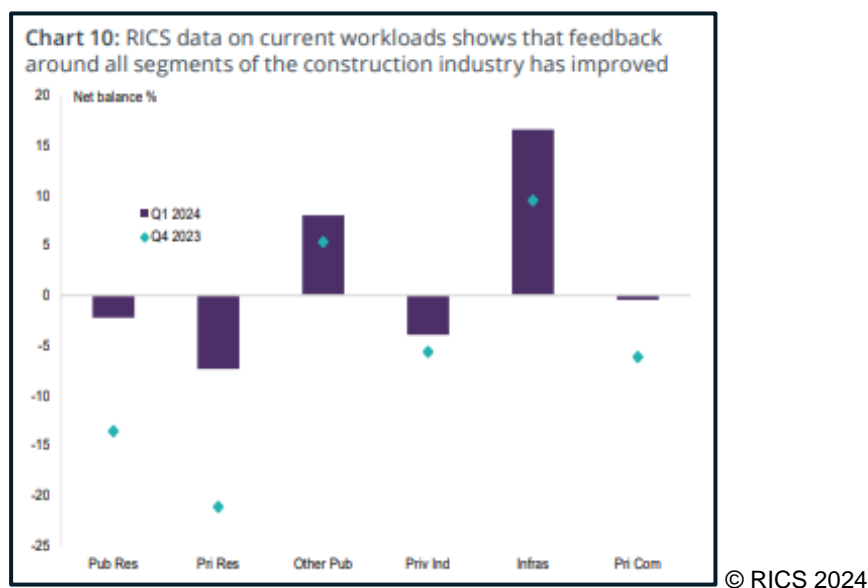
- Gradual recovery in the economy to be accompanied by a softer inflation outlook.

**Summary:** Interest rates cuts are likely to start over the coming months as the inflation trend continues to moderate. This should provide encouragement both for the construction industry and property markets. RICS survey feedback regarding forward-looking indicators of workloads over the next twelve months (see publication date) are already suggesting a broad-based improvement. Similarly, a more positive view of the residential market is visible at this time horizon, even if new buyer enquiries have recently stalled as mortgage rates backed up. The picture for commercial real estate appears a little flatter but sector trends remain particularly divergent.

**Construction Sector** – Official data continues to point to a fairly flat trend in construction activity at an aggregate level; this largely chimes with the feedback received in the *Q1 Construction Monitor*. The headline reading for industry workloads came in at zero in net balance terms, signalling a generally stable trend in Q1. That said, this does mark an improvement compared to the net balance of -8% returned in the previous quarter. Chart 10 on the next page demonstrates that respondents to the survey are seeing the

[Back to top](#)

emergence of a more positive or less negative) picture in all sub-sectors, with the shift in feedback around private housing particularly notable.



Source: RICS Economics Research: *RICS UK Economy and Property Market Update* (May 2024), London: RICS, p2 - Chart 10.

**[Read the full piece of research 'RICS UK Economy and Property Market Update, May 2024'](#)**

**Also:**

**[UK Economy and Property Market Chart Book, Q4 2020](#)**

- Agreed sales rise over the month with expectations modestly positive regarding the near-term outlook

**[UK Residential Market Survey: May 2024](#)**

- Recovery in buyer demand falters slightly amid interest rate uncertainty.

- New buyer enquiries see a modest dip alongside a general softening in momentum reported across the sales market,
- National house price indicator slips back into slightly negative territory,
- Near-term expectations still point to the recovery getting back on track in the months ahead.

The May 2024 *RICS Residential Survey* results are symptomatic of a slight setback for the sales market over the month, with most of the indicators tracked deteriorating to a certain extent. This appears to be linked to the recent scaling back in expectations around the degree of monetary policy loosening likely to be pushed through by the Bank of England during the second half of this year (see publication date). Nevertheless, respondents still foresee a modest recovery in residential sales volumes getting back on track over the months ahead.

[Back to top](#)

For the aggregate new buyer enquiries series, the latest net balance reading of -8% is down from a figure of -1% beforehand. As such, this is consistent with a modest drop-off in demand over the month. Furthermore, the latest return marks the softest reading for this metric since November of last year (2023). When viewed at the regional level, the most noticeable decline in buyer enquiries came in the South East and South West of England (exhibiting net balances of -27% and -23% respectively).

At the same time, respondents also reported a fall in the number of sales agreed during May, evidenced by a net balance reading of -13% being recorded for this month (down from +4% last time). Going forward, despite the recent stumble, near-term expectations point to sales volumes picking up modestly over the coming three months (posting a net balance of +6% compared to zero previously). Moreover, the outlook for twelve-months ahead remains relatively upbeat, with a net balance of +43% of survey participants anticipating an uplift in sales activity (an increase from a figure of +33% in April).

Alongside this, the flow of sales instructions coming onto the market continues to rise, with the new listings indicator registering a net balance of +16% in May. As a result, the volume of fresh instructions coming onto agents books has now improved for six consecutive months. Painting a similarly positive picture for changes in supply on the second-hand market, a net balance of +17% of respondents report that the number of market appraisals undertaken of late is higher than a year ago (representing the fifth reading in expansionary territory for this metric).

[Read the latest RICS UK Residential Market Survey: May 2024 in full.](#)

### **RICS - SPACIOUS 千居 Hong Kong Residential Monitor / Market Survey: May 2024**

- Sales market recovery loses momentum.

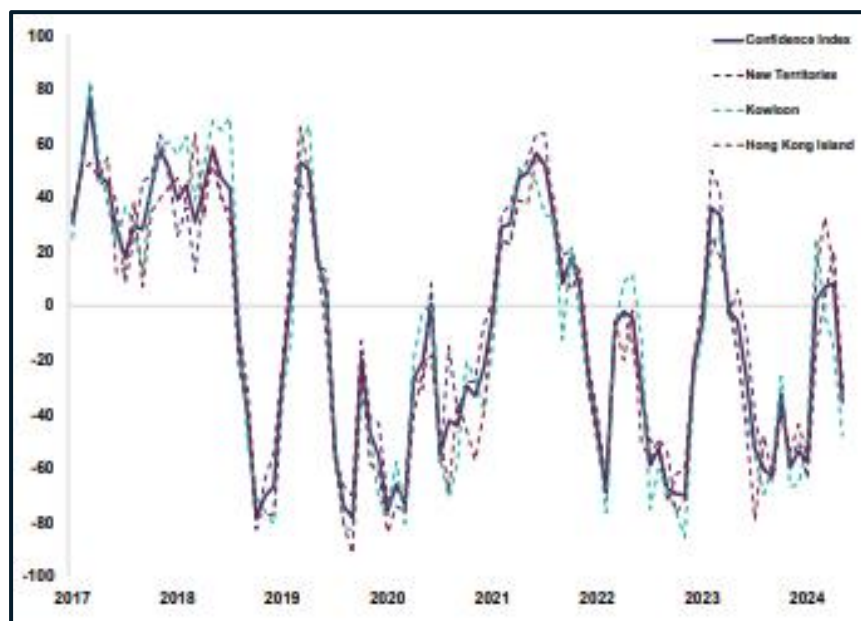
- Headline confidence index flips into negative territory,
- Sales recovery stalls as demand falls, and
- Letting market remains more resilient.

The results for the May *RICS-Spacious Hong Kong Residential Property Monitor* point to a stalling in the recent recovery across the sales market. As highlighted in Chart 1, the headline confidence index fell to -36, a sudden drop from +8 in the previous month. Moreover, feedback from respondents signals the market recovery has lost steam in all districts. The headline index readings in Hong Kong Island and the New Territories are now negative, falling from figures above +10 previously to around -48 (-15 last time). Meanwhile, the lettings market displays a higher level of resilience, with stronger demand seen in Hong Kong Island and Kowloon.

[Back to top](#)

**Visible slowdown in the sales market** – Overall, the sales market saw an abrupt deceleration in May, as both the price and sales metrics registered a marked slump.

**Chart 1: Confidence Index\*:**



© RICS 2024

Source: RICS Economics Research: *RICS Hong Kong Residential Monitor – May 2024*, London: RICS, p1 - Chart 1.

\* The Confidence Index is a composite measure capturing overall market momentum, encompassing variables on short-term price and sales expectations.

**Read the latest RICS HK Residential Monitor: May 2024 in full.**

- *RICS-Spacious HK Residential Monitor* is a monthly guide to the trends in HK's housing market. The report is available from the [RICS website](#) along with other surveys covering global housing, commercial and land markets, as well as construction industry.

**Global Commercial Property Monitor (GCPM), Q1 2024**

- Gradual recovery in commercial real estate sentiment visible in responses to Q1 GCPM.

- The headline RICS Commercial Property Sentiment Index (CPSI) turns less negative for the second successive quarter,
- Improvements in feedback is visible both in the occupier and investment markets.
- Over three-quarters of respondents indicate they have seen some increase in the repurposing of office space for other uses

The headline RICS Global Commercial Property Sentiment Index for Q1 2024 stands at -10 which represents the least downbeat reading since Q2 2022.

[Back to top](#)

### The Global Commercial Property Monitor (GCPM) Q1 2024 continued.

Significantly, the less negative tone across the aggregate results is coming through both on the occupier and investor sides of the market. As far as the former is concerned, the Occupier Sentiment Index (QSI) improved from -13% to -8 while the Investment Sentiment Index (ISI) moved from -18% to -13%.

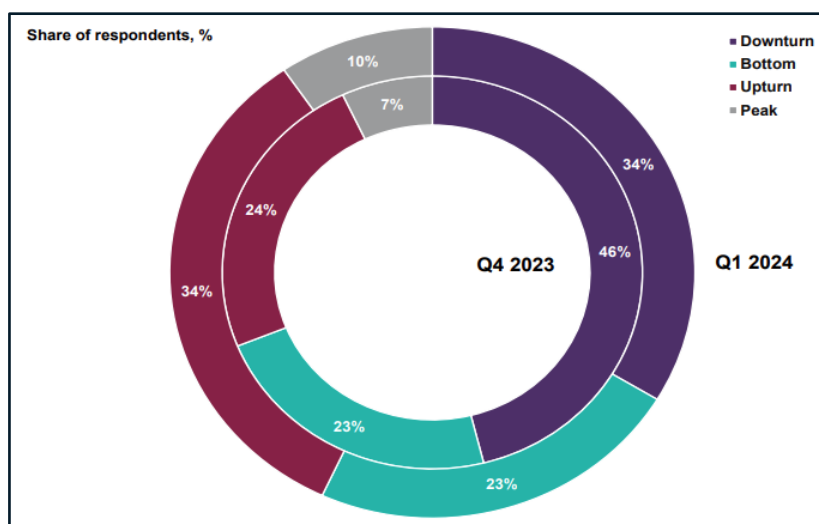
AS has repeatedly been the case in recent quarters, there remain pronounced divergences in the results at a regional level although, this time around, it is significant that the CPSI all cases is either a little more positive (or less negative) than previously.

#### Perceptions around markets evolving

Consistent with the less pessimistic tone to the CPSI metrics are the responses regarding where real estate markets are in the cycle. The global data is as usual presented in Chart 6, but it is noteworthy that the same picture plays out when the numbers are disaggregated.

A critical influence in supporting this trend is likely to be the continuing shift in the credit environment as reported in the *Global Commercial Property Monitor*. This latest improvement has come in the face of largely unchanged policy (interest) rates in most economies and market rates (bond yields) retreating somewhat after the Q4 2023 rally. In the case of the Americas, a net balance of +14% reported an improvement in credit conditions over the quarter, which is the best reading since the early part of 2022.

**Chart 6: Global Perceptions Regarding Point in Cycle**



© RICS 2024

Source: RICS Economics Research: *RICS Global Commercial Property Monitors*, Q4 2023, London: RICS, p4 - Chart 6.

**[Read the latest RICS Global Commercial Property Monitor, Q1 2024 in full.](#)**



[Back to top](#)

## Latest Statistics from the Office for National Statistics (ONS)

[UK economy latest](#) – A roundup of the latest data and analysis on the UK economy, business and jobs following Brexit and during the coronavirus (COVID-19) pandemic.

### Construction Industry highlights

[Construction Industry highlights include – Construction output in Great Britain: April 2024](#)

- Short-term measures of output by construction industry in April.

#### What's covered in the latest bulletin?

- Monthly construction output is estimated to have decreased by 1.4% in volume terms in April 2024, with the monthly value in level terms of £14,940 million.
- The fall in monthly output came from decreases in both new work (1.9% fall), and repair and maintenance (0.8% fall); anecdotal evidence from survey returns suggests effects of heavy rainfall and strong winds affected output in April.
- At the sector level, seven out of the nine sectors saw a fall in April 2024; the main contributors to the monthly decrease were private housing new work, and private housing repair and maintenance, which fell by 4.4% and 2.5%, respectively.

[Read the full statistical bulletin, 'Construction output in Great Britain: April 2024.](#)

Also:

[Latest release - Construction statistics, Great Britain: 2021](#) - A wide range of statistics on the construction industry. including the value of output, new orders by sector, number of firms and total employment, insolvencies and Output Price Indices.

## Latest Statistics from HSE – Health and Safety Executive

### Latest Key figures for Great Britain (2021/22)

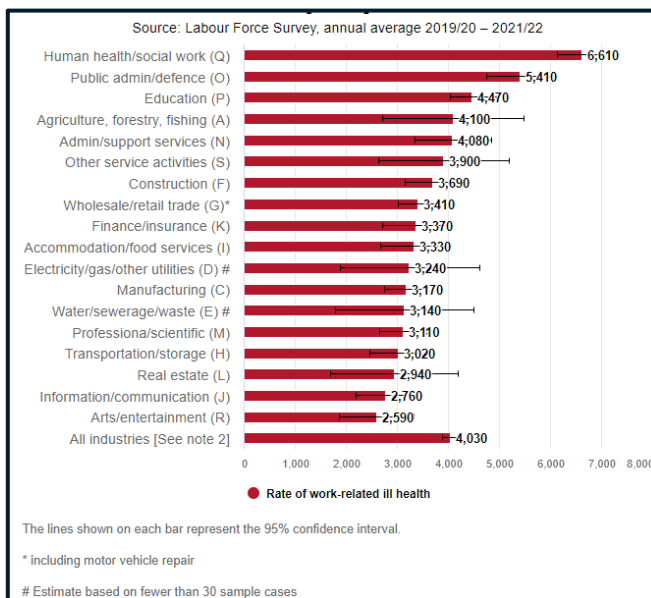
In 2021/22 an estimated 1.8 million workers (**N.B. 1.7 million in 2020/21**) were suffering from an illness they believed was caused or made worse by their work and 565,000 (**N.B. 441,000 in 2020/21**) workers sustained a non-fatal injury at work. [Source: Self-reports from the Labour Force Survey]. However, the risk of injury and work-related ill health varies across industry, being more likely in some industries than others.

The chart overleaf shows how the overall rates of self-reported work-related ill health and workplace injury vary between industry groups. While the chart shows the overall picture for each industry group, this may be masking differences at more detailed levels (for example, illness type or more detailed industry sub-groups).

[Back to top](#)

**From the Health and Safety Executive (HSE), ‘Self-reported work-related ill health’, and covering ‘Construction’:**

**Rate of self-reported work-related health by industry for people working in the last 12 months (per 100,000 workers)**  
**[Note 1], [Note 3]**



© Crown copyright 2023

**Note 1:** Industry groupings based on the section level of the 2007 Standard Industrial Classification (SIC) & **Note 3:** These estimates are based on results from a survey and are subject to sampling error.

Source: HSE (2022) ‘Self-reported work-related ill health’, Bootle: HSE [online]. Available at: [www.gov.uk/statistics/industry](http://www.gov.uk/statistics/industry) [accessed 28 June 2024]

**[Access further information on health and safety statistics from HSE – Health and Safety Executive.](#)**

[Back to top](#)



## Built Environment Research

**Latest Policy and Research from:**

**1) Savills Market Trends**

- LATEST: Market Trends: Savills.com [July 2024]

**Talent: where will tomorrow’s skilled workers come from?**

- Skilled workers are congregating in new – and often surprising – clusters around the world. Savills Future Workforces Index reveals the existing and emerging talent hotspots across the world.

Source: Sellers K (2024) ‘**Talent: where will tomorrow’s skilled workers come from?**’ [online]. Available at: [www.savills.com/impacts/market-trends/talent-where-will-tomorrows-skilled-workers-come-from.html](http://www.savills.com/impacts/market-trends/talent-where-will-tomorrows-skilled-workers-come-from.html) [accessed at 31 May 2024]

[Back to top](#)

**Also: [Market Trends 2024](#)**

- [Offices in equilibrium: Spotlight on London](#)
- [Offices in equilibrium: Spotlight on New York City](#)
- [Europe and Middle East investment outlook and tips](#)
- [US investment outlook and tips 2024](#), and
- [Asia Pacific investment outlook and tips 2024](#).

## **On the up: global real estate investment picks up for 2024**

- 2024 should be a better one for global property investors, with a sustained bounce back expected. However, regional variations remain.



© Savills *Market Trends*, 2023

Real estate investors are looking forward to a more positive 2024, with recovery predicted across key parts of the global property market.

The outlook is for increased activity on the back of more attractive yields, with prime rents rising and repricing starting to re-align buyer and seller expectations.

Charts provided within this article (and including 'Outlooks for 2024' provided overleaf) are based on Savills' annual survey of Savills global research experts, who provide their investment outlooks and top tips for the coming year.

The outlook for global property is becoming more positive. Investment activity is expected to rise moderately or remain unchanged across most property sectors in Europe and the Middle East in 2024. Only a small minority of respondents expect activity to decline, so the worst of the contractions caused by rising interest rates appear to be behind us.

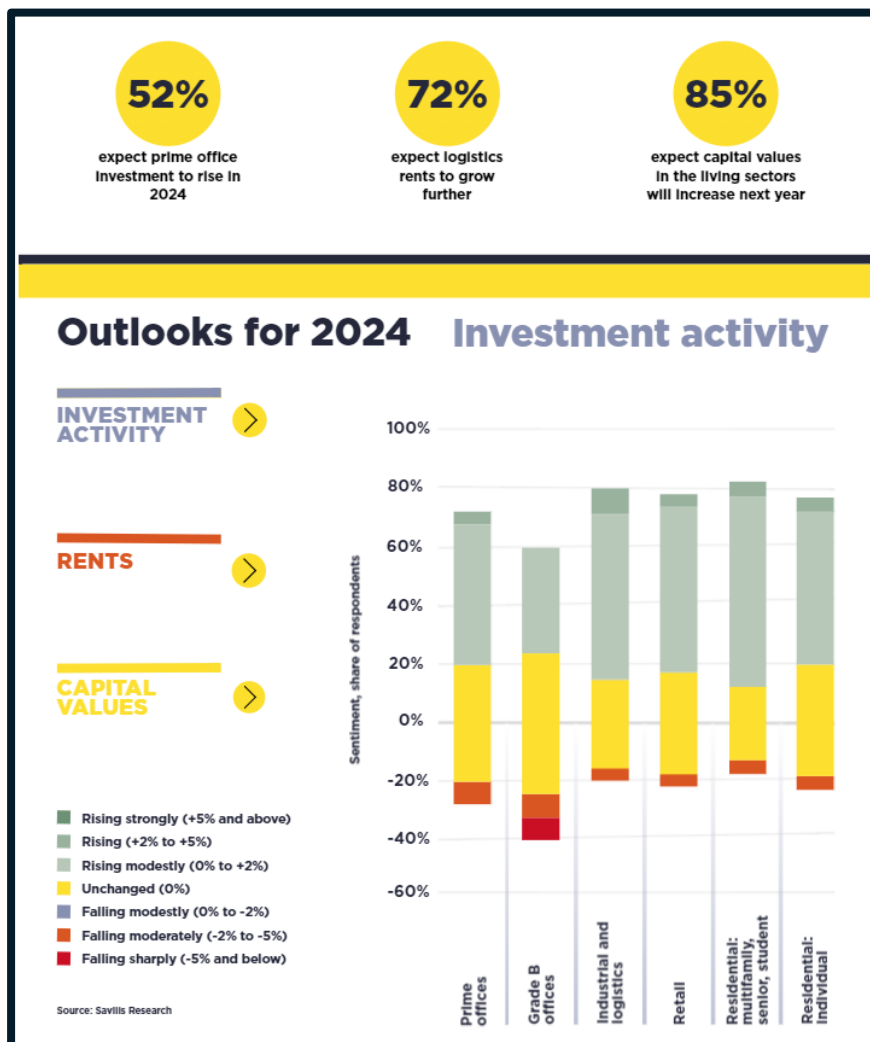
There is more optimism about the activity in residential markets, particular the multifamily sector, where demand outstrips supply in the many areas. Buoyed by strong fundamentals, the logistics property market also looks set to perform well in 2024.

It's a more mixed outlook for offices, however, especially outside the prime sector, where 16% of respondents expect investment activity to decline in 2024.

[Back to top](#)

Overall, 5% to 10% of respondents anticipate a strong rise in investment activity. Savills believe this will be driven primarily by prime purchases, alongside opportunistic investment in distressed assets that are expected to come to market.

**Outlooks for 2024**



© Savills Market Trends, 2023

Source: Tostevin, P., and Mitsostergiou, E, (2023) *Market Trends: On the up: global real estate investment picks for 2024*, Savills [online]. Available at: [www.savills.com/impacts/market-trends/on-the-up-global-real-estate-investment-picks-for-2024.html](https://www.savills.com/impacts/market-trends/on-the-up-global-real-estate-investment-picks-for-2024.html) [accessed 10 May 2024]

**Access** 'On the up: global real estate investment picks for 2024', in full.

**Also:** Market Trends – 'The total value of global real estate', in full.

**Read Savills Investment tips and trends by region -**

- [Read more EMEA tips](#), ○ [Read more Asia-Pacific tips](#)
- [Read more North America tips](#)

[Read Savills World cities prime residential forecasts](#)

[Back to top](#)

[Read the full Savills Impact Publication 'The Impact of Covid-19 on real estate', 2020'](#)

[Savills \(2020\) 'Welcome to Impacts 2020' Impacts, May, Savills \[online\]. Available at Savills.com](#)

## **2) Joseph Rowntree Foundation (JRF) -**

- Inspiring Social Change: The Joseph Rowntree Foundation is an independent social change organisation working to solve UK poverty.

### **A framing toolkit: How to talk about homes**

Part of [Talking about housing](#)

**Related topics** – Housing; Affordable housing; Housing Market

- You can download the framing toolkit to help tell a new story about homes. It contains essential guidance and tips for how to communicate to the public about the importance of decent and affordable homes as fundamental to a healthy, decent life.

The toolkit offers practical examples to bring to life the five framing principles for explaining about homes and the housing crisis. These frames are designed to support communicators and campaigners in the housing sector and beyond.

This FrameWorks UK toolkit is part of the Joseph Rowntree Foundation and the Nationwide Foundation's co-funded Talking about Housing project.

**Access the JRF(2023) '[How to talk about homes – toolkit](#)' (1.41 MB), in full.**

**Also gain access to the following free downloads that include: Research Findings and Related Links surrounding:**

- **Housing**
  - Affordable Housing
  - Home Ownership
  - Housing Market
  - Private Rented Sector,
  - Social Housing
- **Society**
  - Emerging Futures,
- **Living Standards**
  - Cost of Living,
- **People**
  - **Child poverty**, and

**UK Poverty:**

**JSR article entitled, 'UK Poverty 2022: The essential guide to understanding poverty in the UK' in full**

[Back to top](#)

[JRF \(2022\) UK Poverty 2022: The essential guide to understanding poverty in the UK \(3.71 MB\).](#)

[Read the JSR report entitled, 'UK Poverty 2020/21' in full](#)

[Read the article 'UK Poverty 2019/20 Housing' in full](#)

[UK Poverty Statistics from the Joseph Rowntree Foundation -](#)

The latest UK poverty data, statistics and analysis from JRF's Analysis Unit. This **online toolkit** can be used to find information about poverty rates and related issues in the United Kingdom.

[JRF Spring Budget 2021 analysis](#)

[JRF Analysis of the 2020 Spending Review](#)

### **3) The Smith Institute**

- The Smith Institute is a leading independent 'think tank' which promotes progressive policies for a fairer society. They provide a high-level forum for new thinking and debate on public policy and politics. Through research, reports, briefings, monographs, events, lecturers, education, and their website, the Institute offers a platform for thought leadership on a wide range of topics.

#### **Making retirement living affordable: the role of shared ownership for older people**

APPG on Housing and Care for Older People (2023)

*The Smith Institute supported the All-Party Parliamentary Group (APPG) on Housing and Care for Older People inquiry and report into the role of shared ownership housing for older people.*

The report from the Inquiry Panel highlights and evaluates the key issues concerning the development of the market for shared ownership for older people, with particular regard to the government's current Older People's Shared Ownership (OPSO) scheme. It then, in respective sections on the key issues, comments on the current situation and set out recommendations for improving the offer and supporting the growth of the sector.

[Read the full piece of research, 'Making retirement living affordable: the role of shared ownership housing for older people.'](#)

#### **Temporary accommodation at crisis point: Frontline perspectives from London and Greater Manchester**

Farrelly, M., and Hackett, P, The Smith Institute (2022)

- This report examines statutory homelessness and temporary accommodation (TA) in London and Greater Manchester.

[Back to top](#)

It is a public policy facing report to shed light on what is currently happening with the supply and demand of TA and to open up a wider discussion around what can be done to improve the situation going forward. It is not intended as an academic or technical comparative analysis of the different boroughs homelessness activities.

The findings and evaluations are based on extensive desk research and one to one interviews with housing officers and other housing professionals, housing providers, investors, politicians, experts, homelessness charities and campaigners. We also hosted two virtual roundtable discussions in the Spring of 2022 on Greater Manchester, chaired by Paul Dennett, Salford City Mayor and Deputy Mayor for Greater Manchester, and on London, chaired by Tom Copley, London Deputy Mayor for Housing and Residential Development.

Where relevant we have highlighted what specific boroughs are doing and have included examples of best practice and new ideas and approaches. We have laced the report with anonymised quotes from the interviews and made reference to the work of the GLA, London Councils, GMCA and other relevant organisations. We have evaluated the data and opinions and on the basis of what we've offered a series of talking points and policy recommendations. The concept of a TA system as used in this report combines the boroughs' statutory duties under the Homelessness Reduction Act (2017) and their responsibilities under relevant housing legislation and regulations.

The report covers the GLA and the 32 Greater London boroughs and the GMCA and its boroughs (Bolton, Bury, City of Manchester, Oldham, Rochdale, Salford, Stockport, Tameside, Trafford, Wigan). The data was drawn mainly from DLUHC, GLA, GMCA and other official statistics, as well as information collated by the boroughs, housing charities and professional bodies.

**[Read the full piece of research, 'Temporary accommodation at crisis point: Frontline perspectives from London and Greater Manchester.'](#)**

**Understanding the impact of almshouse charities in the pandemic.**

Hunter, P., The Smith Institute (2022)

- This independent study, commissioned by The Almshouse Association, seeks to understand the impact of the pandemic on almshouse charities and their residents, examine the difference almshouse charities have made, identify the lessons that can be drawn from the past two years; and highlight challenges the sector faces going forward.

**[Read the full piece of research, 'Understanding the impact of almshouse charities in the pandemic.'](#)**

[Back to top](#)

**Housing allocations and the vacancy chain: how coordinating chains can better meet housing needs and tenant choice.**

The Smith Institute (2022)

- This report is an exploration into the factors influencing vacancy chains in London's social housing, covering general needs stock held by councils, ALMOs and housing associations, with interplays from supported and specialist housing. The report is in five sections, including a set of recommendations.

**[Read the full piece of research, 'Housing allocations and the vacancy chain: how coordinating chains can better meet housing needs and tenant choice.'](#)**

**Pulling at the Roots: A report by the Southwark Council Housing Resident's Working Part on understanding and mitigating the economic and financial impacts of Covid for residents of council housing in Southwark**

Southwark Council Housing Residents' Working Party (2021)

*The Smith Institute provided support for the Southwark Council Housing Residents' Working Part on understanding and mitigating the economic and financial impacts of Covid for residents of council housing in Southwark.*

To get a better understanding the Council helped establish a Council Housing Residents' Working Party (RWP), comprising tenants and homeowners in June 2021. The Working Party was tasked to examine the economic and financial impacts of the COVID pandemic, including paying special attention to who has been worst affected, what support the Borough's council housing residents have had, and what is needed to improve this morning forwards.

The RWP took oral and written evidence from Council officers, housing and debt experts, and representatives from the community and voluntary sector, considered government and Council held data on rent arrears and the impact of Covid; and conducted its own survey of over 1,800 tenants and leaseholders.

**[Read the full piece of research, 'Pulling at the roots: A report by the Southwark Council Housing Residents' Working Party on understanding and mitigating the economic and financial impacts of Covid for residents of council housing in Southwark.'](#)**

**A Just Transition: Ensuring responsible investment for a just transition to net zero.**

The Smith Institute (2021)

The Smith Institute supported the All-Party Parliamentary Group for Local Authority Pension Funds inquiry into 'Responsible investment for a just transition.'



[Back to top](#)

This report is based on evidence sessions and written submissions to that inquiry from investors, industry, academics, community groups, trade unions, and other non-government organisations. The inquiry report seeks to inform politicians, policymakers, stakeholders and the public on the roles and responsibilities that investors can play, with the support of their members and government, in enabling a just transition to net zero carbon emissions.

[Read the full piece of research, 'A Just Transition: Ensuring responsible investment for a just transition to net zero.'](#)

### **Publications – The Smith Institute**

[- The Living Wage Dividend: maximising the local economic benefits of paying a living wage.'](#)

[- Planning for the recovery and the shift towards homeworking: implications for poverty in outer London.](#)

[- A National Housing Conversion Fund: buying properties to boost affordable housing supply.](#)

[- Falling behind: The impact of Universal Credit on rent arrears for council tenants in London.](#)

[- Making Housing Affordable after Covid-19: A follow up report from the Affordable Housing Commission.](#)

[- Making Housing Affordable Again: Rebalancing the Nation's Housing System: The final report of the Affordable Housing Commission.](#)

## **4) CBRE Insights and Research**

The CBRE Research blog showcases a variety of informed viewpoints, spanning all major property sectors that include –

- **Offices** – Discover up to the minute and future looking trends in the Office sector for occupiers, landlords, investors and developers
- **Retail** in detail,
- **Industrial** – CBRE 'shed' light on all things industrial,
- **Residential** – CBRE's 'house' vide on all things residential, and
- **Investment** – addressing the challenges and opportunities facing commercial real estate property investors

[Access the CBRE website: Insights and Research](#)

[Access 'Sustainability in real estate decision-making: views from the coal face.'](#)

**LATEST: [CBRE \(2024\) 'UK Real Estate Market Outlook 2024'](#)**

[Back to top](#)

## **5) CABE – Chartered Institute of Building Engineers**

### **Latest news: Fire Safety Act and Regulations**

- **Changes to Building Regulations for fire safety in specific types of buildings**
  - On 1 June 2022, the Department for Levelling Up Housing and Communities (DLUHC) announced the outcome of its consultation on extending controls on use of combustible materials, and additional fire safety measures in higher risk buildings. These will come into force on 1 December 2022.
    - [Further information on the Changes to the Building Regulations](#) and
    - [More details can be found in the Amendment Document issued by DLUHC](#)
- **Coming into force of Schedule 1 of the Fire Safety Act relating to Fire Risk Assessments**
  - The Fire Safety Act 2021 will come into force in 2023, but ahead of this Section 1 – Premises to which the Regulatory Reform (Fire Safety) Order (FSO) applies and Section 3 – Risk-based guidance about the discharge of duties under the FSO of the Act commenced on 16 May 2022.
    - [Fire Safety Act Commencement Prioritisation Advice](#)
    - [Information on commencement of Section 1 and 3 of the Fire Safety Act](#)
    - [Fire Risk Assessment Prioritisation Tool](#)

### **Key publications from CABE**

***Setting the Bar*** – a blueprint to improve competence for those working on higher risk buildings and drive culture change has been set out by a cross-industry group representing more than 150 organisations, including CABE, in the fire and built environment industries. [Access \*Setting the Bar\* – Final Report](#)

Also: [Access \*Safer people, safer homes: Building Safety Management\*](#)

[Access the Chartered Association of Building Engineers for further information.](#) and [Access \*Building Engineer\* website](#)

## **6) RICS – Royal Institution of Chartered Surveyors**

- RICS recognise the huge importance of property, land, construction and the built environment. Through their market surveys and research, they aim to advance the thinking of the profession and raise the profile of the industry.

Note: Latest research published by RICS is covered earlier within *Knowledge Foundations* and under **Other News > RICS Market Surveys**.

[Back to top](#)

As of **July 2024**, the [latest news & insights](#) include:

- **News, Insights & Opinion –**
  - [RICS response to manifesto announcements regarding construction, infrastructure and skills](#)
  - [Leasehold Reform: What next for the sector?](#)
  - [Building Safety Act FAQs and Information \(05/24\)](#)
- **Digital Transformation / Tech Partner Programme –**
  - [Flood Risk Impact on UK Commercial Properties](#)
  - [Using AI across the built environment,](#)
  - Advancements in drone technology, and
  - Unlocking Operational BIM Benefits
- **Market & Geopolitics –**
  - The outlook for office markets: Towards a two-tiered system?
- **Fire Safety –**
  - [Cladding External Wall System \(EWS\) FAQs \(5/24\)](#),
  - [RICS Fire Safety Hub](#) – read the latest guidance and development from RICS in the area of fire safety,
- **Also: [The future of BIM](#)** – An overview of what BIM is and how it is evolving.

## **7) CIOB – Chartered Institute of Building**

The quality of the built environment affects every member of society. As a professional body that represents the leaders and managers who work at every stage of the lifecycle of a construction project, The CIOB seek to influence government, industry and other stakeholders around the world with the aim of promoting the construction management discipline and addressing the challenges that the sector faces.

As of **July 2024**, the latest CIOB Policy and [Research](#) incl.

### **Future of Construction**

- **Latest Research: CIOB Artificial Intelligence (AI) Playbook 2024 (06/24)**
- *Building Opportunity: Employing People with Criminal Convictions in Construction (03/24)*
- *Modern Methods of Construction: barriers and benefits for Irish housing (01/24)*
- *The Real Face of Construction 2023* presents a picture for each economic region of the United Kingdom and Ireland, highlighting how the construction industry has performed.

### **Quality**

- Research: New-build housing – how regulation can improve the consumer journal (12/23)

### **Economic and Social Impact**

- Research: *Balancing the tax system with climate goals (10/23)*

### **Ethics research**

- *Understanding Mental Health in the Built Environment;* and *The State of Well-being in the Construction Industry.*

**[Access the Chartered Institute of Building's Policy and Research website](#)**

[Back to top](#)

## **8) House of Commons Library, 9) the House of Lords Library and 10) the Parliamentary Office of Science and Technology (POST)**

**About the House of Commons Library** - The House of Commons Library is a research and information service based in the UK Parliament. Their impartial analysis, statistical research and resources help MPs, and their staff scrutinise legislation, develop policy, and support constituents.

### **Watch this quick video to find out how the House of Commons Library works**

*Source:* UK Parliament (2020) 'How the House of Commons Library works', YouTube [video]. Available at: youtube.com.

As of November 2022, the House of Commons Library updated their website that is now broken down into the following sections or subject areas:

**Services** that include **Research**, Resources, Training & Events,

**Brexit and UK-EU relations** – Research covering key Brexit moments negotiations the EU and its institutions and UK-EU relations after Brexit.

**Coronavirus** – Research relating to Covid-19 from the Commons Library and other parliamentary research services.

**Economy, Business and Transport** – Research on the economy, business transport and work and incomes. Also includes Economic Indicators and monthly economics updates.

**Home Affairs** incl. Research on communities, crime, family & civil law, justice, immigration, security, and culture, media & sport,

**Parliament & Elections** that include devolution, elections, government, parliament, and local government,

**Science, Environment and Technology** that include **Energy, Environment, Climate Change, Sciences, Local Data**

**Social Policy** that include **Education, Families & Social Services, Health, Housing & Planning, and Welfare & Pensions,**

**World Affairs** that is broken down into Africa, Americas, Asia Pacific, Defence, Europe, Institutions, and Middle East, and more.

As of **July 2024**, the latest House of Commons Library, **Research publications** incl.

1. The general election and voting in the UK,
2. Parliament and elections data,
3. **Leasehold reform in England and Wales: What's happening and when?**

**Review House of Commons Library, Research for this week**

As of **July 2024** the latest **House of Commons Research:**

[Back to top](#)

Under '**Education**' and within 'Social policy,' the top research briefings incl.

1. **Degree apprenticeships** – This briefing explains what degree apprenticeships are, how they are regulated and funded, and how many people start one.

**Also:**

2. **International students in UK higher education**
3. Finding funding for a master's degree
4. Financial support for higher education students,
5. Autism: Overview of policy and services,
6. Student support for undergraduates across the UK, and
7. **Higher education around the world: comparing international approaches and performance in the UK** – This briefing compares how higher education works around the world with the UK. It considers systems, student numbers, funding, access and participation, and research.

Under '**Housing and Planning**' and within 'Social policy,' the top research briefings incl.

1. Local growth funds,
2. Planning enforcement (England),
3. Housing Market: Key Economic Indicators,
4. Planning for solar farms, and Onshore wind,
5. The growth in short-term lettings in England,
6. Holocaust Memorial Bill: Progress of Bill,
7. High Streets (Designation, Review and Improvement Plan) Bill,
8. Renters (Reform) Bill 2023-24: Progress of the Bill.

Under '**Energy**,' '**Environment**' and '**Climate change**,' and within 'Science, Environment and Technology' include:

1. New approaches to farm funding in England,
2. Taxation of North Sea oil and gas,
3. Food banks in the UK,
4. Rising cost of living in the UK,
5. The UK and the US\$100 billion climate finance goal,
6. The Energy Bill and households: FAQs.

[House of Commons Library search](#) on '**construction industry**' identifies 18 key documents, that incl. 'Taxation in the construction industry', 'CITB – Construction Industry Training Board Levy', and '**The construction industry: statistics and policy, Dec. 2019**' -

Abstract: Construction industry – employment, new orders, output. [Construction 2025](#), [The Farmer Review](#) and the [Construction Sector Deal](#) (part of the government's [Industrial Strategy](#)).

**Key statistics** – In 2018, the construction industry contributed £117 billion to the UK economy, 6% of the total.

Economic output in 2018 was slightly down on 2017, the first fall since 2013.

There are 2.4 million construction industry jobs in the UK in Q2 2019, 6.6% of all jobs. There are more construction jobs now than at any time since 2007, although throughout this period, roughly the same proportion of jobs have been in construction.

The construction industry is unusual because of the high proportion of self-employment in the sector – 36% in Q2 2019, compared to the average for the whole economy of 13%.

New orders to the construction industry were worth £61.7 billion in 2017. This is 13% down in 2017, the first fall since 2011. New housing orders accounted for 35% of all construction orders, commercial orders accounted for 25% and infrastructure orders accounted for 19%.

[Access and download the full report, 'Construction industry: statistics and policy'](#)

[Back to top](#)



## e-Journal Review

### Built Environment Industry Journal titles reviewed by UCEM e-Library

#### MODUS

**MODUS** - the RICS magazine that brings you the latest news and views, expert advice and in-depth features spanning the breadth of the surveying profession around the world.

In the latest digital **MODUS (July 2024)**, 'Spaceport construction is taking off'. – The world's rejuvenated obsession with space is fuelling a wave of spaceport development, but there are complex planning, environmental and regulatory requirements to navigate.

Subject Terms/Keywords: Commercial property; Environmental management; Environmental surveying; Infrastructure; Marine environments; and Technology

#### Latest articles within **Modus**:

- **'Concrete commitment: the Initiative 99 competition'** – When 3D-printed housing company ICON invited architects and students to create designs for new affordable housing in Texas, few people could imagine entries would be quite so beautiful.

Subject Terms/Keywords: Housing; and Machinery and business assets.

- **'Hollowing out: the scourge of Japan's empty homes'** - New owners are needed for the abandoned houses that are becoming a threat to the viability of some Japanese villages. What can be done to attract people back to the countryside?

Subject Terms/Keywords: Housing; Personal property; Rural; and

[Back to top](#)

Rural economy.

- **Michael Manikas FRICS: Australia's Indigenous ambassador** – *Modus* profiles Michael Manikas FRICS, Australia's first Aboriginal fellow surveyor and a long-time champion of construction as a career choice for Indigenous populations.

Subject Terms/Keywords: Diversity and inclusion; Land and resources; Land rights; Planning and development; Projects and people; and Rural.

- **'Give me shelter: the global housing crisis'** – The UN estimates 1.6 billion people are not adequately housed and 96,000 new homes a day need to be built. RICS President Tina Paillet FRICS discusses how members can help to ease the situation.

Subject Terms/Keywords: Housing; and Planning and development.

- **'Could 3D printed houses transform the built environment'** – A Texas-based company has demonstrated a home that can be printed in two days for \$10,000 and meets US building codes.

Subject Terms/Keywords: Building surveying; Materials and resources; Quantity surveying and construction; Residential; Residential valuation; and Technology.

- **'Child's play: 7 city spaces that encourage fun and games'** - *Modus* picks out the best examples of welcoming urban spaces for children where they can play, from Arup's Playful Cities Design Guide.

Subject Terms/Keywords: Cities and placemaking; Commercial property; Infrastructure; Infrastructure and services; Residential; and Wellbeing.

- **Jason Pomeroy MRICS on 'deep green' urban design** – The Singapore-based TV presenter and founder of Pomeroy Studio is on a mission to make out buildings and cities do more to address climate change.

Subject Terms/Keywords: Building surveying; Projects and people; Quantity surveying and construction; Residential; Sustainability; and Technology.

**Also:**

- **'How valuable is the high-end art market?'** – *Modus* explores two Sotheby's reports on \$1m+ art sales at auction, separates the Hockney from the Haring and finds out who's buying what.

- **What were the most popular stories of 2023 on Modus?** – Profiles of RICS members, as well as topics related to climate change and architecture have it into our top 10 most-read articles in 2023.

[Back to top](#)

**The Top ten most read articles include the following:**

1. Which real estate sector pays the most?,
2. Future-proof: retrofitting commercial property,
3. Brutal or beautiful? The Barbican Estate,
4. Alexandra Revell MRICS: renovating the Royal Albert Hall,
5. At your convenience: the importance of good toilets,
6. From soldier to surveyor,
7. Alan Bainbridge FRICS: transforming the BBC's estate,
8. Buildings that elevated cities: The Shard, London,
9. What are the most important features of office design?, and
10. How to ensure biodiversity net gain in developments.

Subject Terms/Keywords: Commercial property; Commercial valuation; Corporate real estate; Economics; Residential; and Sustainability,

and more.

Please note: In addition to *MODUS*, RICS publishes other journals that are free to view online incl.

1. **Construction Journal** - The journal helps **quantity surveyors** and project managers with the technical and professional aspects of their day jobs and keep up to date with developments and practical matters in the profession. It covers topics including contracts, cost management, procurement, construction law and regulations, communications, and project management skills.
2. **Built Environment Journal** (Incl. Building Surveying, Building Conservation, and Building Control) - Coverage keeps practitioners in the disciplines of building surveying, building control, and building conservation up to date on the latest developments, products, standards, and guidance.
3. **Land Journal** - The journal emphasises the crossovers in these practice areas and their global nature, with articles contributed by experts from all over the ..
4. **Property Journal** - The journal contains high-quality technical material in clearly defined sections, as well as some material that crosses professional groups to reach a wider audience.

Further information can be accessed via the RICS Website, Home > **News & Insights** > **RICS Publications** [online].

The Heritage Alliance's (HA) **Heritage Update**, the latest edition, **June 2024 - Issue 521** focusing on –Heritage, Creative Industries, Arts, and Voluntary Sectors Host Election Hustings; Heritage Sector Leaders Recognised in King's Birthday Honours; Heritage Open Days Celebrates 30 years; and Come along to the Discover Session to Learn More About The Heritage Alliance.

Also: **Engaging Digital Audiences**, available on the **HA project portal** - access webinars on diversifying digital audiences, how to plan great webinars, how to use exceptions to copyright in



[Back to top](#)

your digital activities & how to encourage your audience to create user-generated content.

**Institute of Workplace and Facilities Management (IWFM)**

*Facilitate*, - This latest **May/June 2024** edition of *Facilitate* focuses on Irresistible forces – Several people have mused recently on the subject of cultural change, or rather the lack of it.

Read more related articles on the [IWFM Insight webpage](#).

[Construction Management](#) (CM) and [Global Construction Review](#) (GCR) are magazines of the Chartered Institute of Building (CIOB). **Note:** Latest articles from both journals are covered earlier within this issue of *Knowledge Foundations*.

**Subscriptions available via the VLE e-Library include:**

[Construction Information Service \(CIS\) Insight 2024](#). The Latest Edition [**July 2024**] focuses on – **Designing for sustainability: Creating a healthy environment at work, school and play**, and covers -

- Sustainable construction as viewed through the lens of UN Goals 03, 08, and 11.
- How to design and specify in a way that support sustainable cities and communities, and
- Our part in promoting good health, well-being and decent work.

[Taylor and Francis Online](#) and include the following e-Journals:

- *Construction Management and Economics*,
- *Building Research and Information*, and
- *Journal of Property Research*

[Henry Stewart Publications](#) and include the following e-Journals:

- *Building Survey, Appraisal and Valuation*,
- *Journal of Urban Regeneration & Renewal*, and
- ***Corporate Real Estate***.

***Corporate Real Estate Journal*** is the essential peer-reviewed, professional journal for corporate real estate executives.

Each quarterly 100-page issue publishes high quality articles and real case studies on new thinking, strategies, and techniques in corporate real estate. It cuts through the deluge of information facing corporate real estate professionals to deliver content, which is authoritative, practical, and relevant by providing a blend of genuine thought-leadership – which expands what can be achieved with corporate real estate – with detailed, actionable advice and ‘lessons learned’ from industry peers.

In-depth articles and case studies scheduled for the new volume of *Corporate Real Estate Journal* are provided overleaf.

[Back to top](#)

In-depth articles and case studies scheduled for the new volume, **Vol 13, Number 3 (2023-2024)** of **Corporate Real Estate Journal** incl.

**Vol 13, Number 3 (2023-2024)****Practice papers**

1. Reshaping the corporate landscape: Navigating changes in real estate strategies.
2. Integrating cyber into new construction and commissioning across asset classes.
3. Smart operational technologies programming for whole-building decarbonisation.
4. Best practices for supplier debriefs.

**Case Studies**

1. Funding and implementing a lease compliance programme.
2. Tripple bottom line, environmental, social and governance and net zero in commercial real estate.
3. The Colorado State Government 'Reduce Our Footprint' initiative.

**Vol 13, Number 2 (2023-2024)****Practice papers**

1. The pitfalls of a post-COVID-19 portfolio implementation,
2. Beyond the spend: How corporate real estate is a key driver for elevating diversity in the industry, workforce and communities,
3. A records and information management lens on workplace transformation: How to minimise risk and reap the rewards during real estate changes,
4. After the pandemic: Contemplating the future of central office buildings,
5. Implementing an integrated workplace management system at a major university: Part 1,
6. Evolving metrics in a changing corporate real estate landscape, and
7. Beyond sustainability: Decarbonisation, health and wellness 20 storey about Times Square.

**Vol 13, Number 1 (2023-24)****• Case Studies –**

Cutting the cord: How and why HERE Technologies fired their service provider and took real estate in-house (and whether other end users should too)

**Also:**

- Delivering inclusive workplace experiences to support corporate strategy, and
- Reimagining real estate and facilities management outsourcing: A bp and JLL case study.

[Back to top](#)

### Vol 13, Number 1 (2023-24) continued

#### Practice papers

1. The critical role of data governance in corporate real estate
2. Leveraging healthy buildings as a tool to apply a people-centric approach to ESG.
3. Strategies for using quantitative and qualitative metrics to optimise hybrid work solutions.
4. Meeting the demands of change: A clear path to a better digital enterprise architecture.

#### Also:

Vol 13 (2023-24) of [Corporate Real Estate Journal](#)

Vol 12 (2022-23) of [Corporate Real Estate Journal](#)

Vol 11 (2021-22) of [Corporate Real Estate Journal](#)

Vol 10 (2020-21) of [Corporate Real Estate Journal](#)

Vol 10 (1) (2020-21) Special issue: COVID-19, CRE and workplace response

Vol 9 (2019-20) of [Corporate Real Estate Journal](#)

## HSTalks

© Henry Stewart Talks Ltd 2022

HSTalks is a member of the Henry Stewart Group which has been a leader in providing graduate and continuing professional education in science, business, and management for over 40 years through peer reviewed vocational journals (such as the *Corporate Real Estate Journal*), conferences and online education for medical schools, business schools, universities, government, and commercial enterprises in over sixty countries around the world.

Henry Stewart Talks Ltd (HSTalks) provides specially prepared, animated, online, audio-visual lectures, seminar-style talks and case studies that accompany the 'Business & Management Collection' of e-Journals that the UCEM e-Library subscribes to.

### Educational Journal titles and Open Educational Resources (OERs) reviewed by UCEM e-Library

[Open Praxis](#) – peer-reviewed open access scholarly journal focusing on research and innovation in open, distance and flexible education. It is published by the [International Council for Open and Distance Education – ICDE](#).



This work is licensed under a [Creative Commons Attribution 3.0 Unported License \(CC BY 3.0\)](#).

[Back to top](#)

This latest *Open Praxis* special issue **Vol 16(2)** includes nine research papers, two innovate practice articles and one book review.

**Keywords:** open education, distance education, e-learning, online education, quality, internationalisation, autonomy, personality traits, scale, textbook, engagement, accessibility, inclusion.

**Editorial:** Introduction to *Open Praxis Vol 16(2)*

'Tell Me Your Prompts and I Will Make Them True: The Alchemy of Prompt Engineering and Generative AI.'

**Research articles include:**

1. 'Fostering Intercultural Competence Through Virtual Exchange: Perspectives of Undergraduate Health Students'
2. 'Generative AI and Educators: Partnering in Using Open Digital Content for Transforming Education',
3. 'Advancing Students' Academic Excellence in Distance Education: Exploring the Potential of Generative AI Integration to Improve Academic Writing Skills',
4. 'How to Maintain Education During Wars? An Integrative Approach to Ensure the Right to Education,'
5. 'The Use of Open Educational Resources and Renewable Assignments in Social Work Ph.D. Programs in the United States',
6. 'Artificial Intelligence use to Empower the Implementation of OER and the UNESCO OER Recommendations, and more.

**Innovative practice articles**

1. 'Let's Get Practical! Two Frameworks to Improve Practices of Open Education,' and
2. 'Threading Humanity Back into Education and Educational Research'.

**Book review(s):**

1. 'Book Review of [\*The ADA Book\*](#) - by Curley A.

*Source:* Baldwin, P (2024). *Athena Unbound: Why and How Scholarly Knowledge Should be Free for All*. Cambridge, MA, MIT Press. ISBN 978-0-2623-7395-1.

**Keywords:** Independent learning, scholarly publishing, knowledge sharing, open access, accessibility in education, and independent researchers.

**[\*European Journal of Open, Distance and E-Learning\*](#)**

(EURODL), an electronic, multi-media, open access journal. It publishes the accounts of research and presents scholarly work and solid information about open, distance, online and e-learning in technology-enhanced education and training in its most inclusive definition.

Published in the **[Latest Issue of EURODL](#)**, **Vol. 26 (2024): Issue 1 (March 2024)**, article titles include:

- 'Critical factors affecting student satisfaction in a distance learning environment.' and
- 'The effect of digital literacy on student identity and inclusion: insights from the University of Western Macedonia.

[Back to top](#)

been specifically designed for the online environment.

**Also, in EURODL – Articles by UCEM staff, incl.**

- 'Transcript and Accessibility: Student Views from Using Webinars in Built Environment Education,' Vol 23(2), and
- 'Massive Open Online Courses and Economic Sustainability,' by Liyanagunawardena, T.R. [et al.] UCEM, Vol 18(2). Also,
- 'Open Badges: A Systematic Review of Peer-Reviewed Published Literature (2011 – 2015)', by Liyanagunawardena, T. R., Scalzavara, S [et al.], UCEM, Vol 20(2)

**Online Learning Journal (OLJ)**, the official journal of the Online Learning Consortium (OLC)

The **Online Learning Consortium's** premier journal dedicated to the development and dissemination of new knowledge at the intersection of pedagogy, emerging technology, policy, and practice in online environments. **Note:** OLJ is indexed in the **Web of Science** (ESCI) with a **Journal Citation Indicator** of 1.32, and **Scopus** citesscore of 5.7 for 2021, ranking it in the 93<sup>rd</sup> percentile of all journals in **Education**. OLJ is ranked among the top 3% of all open-access journals in the field of Education.

The OLC **Online Learning Journal**, latest edition,

**OLJ 2024, Vol 28(2)**

**Published: 2024-03-01**

**Editorial** - Introduction to OLJ Volume 28(2).

**Online and Blended Learning in the Age of Generative AI**

1. May the Force Be With You JedAI: Balancing the Light and Dark Sides of Generative AI in the Educational Landscape.
2. Against Artificial Education: Towards an Ethical Framework for Generative Artificial Intelligence (AI) Use in Education.
3. AI Literacy across Curriculum Design: Investigating College Instructor's Perspectives.
4. Examining Students' Self-Regulation Skills, Confidence to Learn Online, and Perception of Satisfaction and Usefulness of Online Classes in Three Suggested Online Learning Environments that integrates ChatGPT.
5. A Case Study Investigating the Utilization of Chat GPT in Online Discussions

**Section 11:**

6. A Framework for Evaluating Online Degree Programs Through Student Satisfaction.
7. Learner perceptions of the feedback process in the online component of a blended course.
8. Online Learning Anxiety and Academic Self-Efficacy During the Covid-19 Crisis.

9. Memorization and Performance During Pandemic Remote Instruction: Evidence of Shifts from an Interactive Textbook.
10. Towards Connectivism: Exploring User of Online Learning Management Systems during the Covid-19 Pandemic.
11. The Effects of Short Online Pedagogical Courses on University Teachers' Conceptions of Learning and Engaging Students During Lecturers.
12. A systematic literature review of online academic student support in higher education.

[ISSN: 2472 – 5730]

[Higher Education Pedagogies](#), an Open Access Journal.

[Henry Stewart Publications](#), Management e-Journal collection incl. *Journal of Education Advancement & Marketing*.

[The Open Education Research Hub](#) (OER Hub), and

[The Directory of Open Access Journals](#) (DOAJ)

[Back to top](#)



## e-Book Review

### Managing Diversity and Inclusion in the Real Estate Sector

Clack A and Gabler J (2019) *Managing diversity and inclusion in the real estate sector* [e-book], Oxon: Routledge. e-ISBN-13: 9780429428975

*Managing diversity and inclusion in the real estate sector* is the first to place D&I at the centre of successful real estate and construction organisations. It provides guidance to, and most importantly, actions for professionals in the sector who want to make D&I an inherent part of the culture of their organisation. This book has been written to bring the sector up to speed with what D&I is all about and how a D&I strategy can be implemented to secure future success.

### Real Estate: The Basics

Forsyth, J. and Wilcox, J. (2022) *Real Estate: The Basics*, Oxon: Routledge. ISBN-13: 9780367725433

*Real Estate: The Basics* provides an easy-to-read introduction to the core concepts of the industry to students new to the subject or professionals changing direction within the sector. The book encapsulates the key 'need to know' aspects of Real Estate including the 'language' of real estate; its value and contribution to countries' GDP; its primary purpose, whether as an asset or as a resource; valuation concepts; asset classes; basic concepts of land law, and of landlord and tenant law; the increased role and

[Back to top](#)

importance of sustainability and technology; and an overview of the wide range of professionals involved in the industry.

### **Studying at a Distance**

Talbot C (2010) *Studying at a Distance* [e-book]. Maidenhead: Open University Press, e-ISBN-13: 9780335238057

This essential guide provides practical help and support for those who have not previously studied at a distance and is ideal for students returning to study after a break. It covers fundamental issues such as motivation, goal setting, time management and coping strategies. Additional coverage in this edition includes specific information on the use of new technologies in distance learning; detailed coverage of referencing, citation, and plagiarism; description of using mind maps and other techniques for planning and writing essays or reports; support for disabled students, particularly those with dyslexia; and a further resources section.

### **Adding some Tec-Variety: 100+ Activities for Motivating and Retaining Learners Online**

Bonk C J, and Khoo E R (2014) *Adding some Tec-Variety: 100+ Activities for Motivating and Retaining Learners Online* [e-book]. CreateSpace Independent Publishing Platform, e-ISBN-13: 9781496162724. [Access the free online book Adding Some TEC-VARIETY](#)

Please note: The authors have made an online version of this work available under a [Creative Commons Attribution-Non-Commercial-Share-Alike 3.0 Licence](#).

### **The Solo Librarian: A Practical Handbook**

Roper, L. (2024) *The Solo Librarian: A Practical Handbook* [print book and eBook], Cambridge MA: Chandos [online]. Further information is available at: <https://shop.elsevier.com/books/the-solo-librarian/roper/978-0-443-15795-0> [accessed 5 July 2024]

Actively diversifying the content to increase its relevance to an international audience, this practical handbook provides a one-stop-shop with accompanying time-saving templates that can be easily adapted to help aid the daily activities and processes often faced by those working in information, knowledge, libraries and related disciplines.

### **Benchmarking Library, Information, and Education Services**

Roper, L. (2023) 'Benchmarking the impact, quality, and value of an academic online e-Library', in Baker, D., Ellis, L., Williams, C. and Wragg, C. (eds) *Benchmarking Library, Information, And Education Services* [print book], Cambridge MA: Chandos

### **Directory of Open Access Books (DOAB)**

The primary aim of DOAB is to increase discoverability of Open Access books.

[Access the Directory of Open Access Books \(DOAB\)](#)

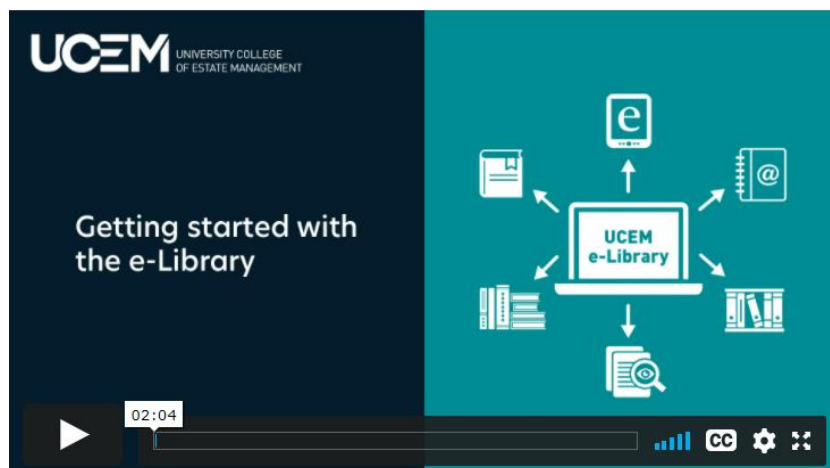
[Back to top](#)

## UCEM e-Library Portrait

### The aim of the e-Library

The aim of the e-Library is to:

- disseminate information, share good practices, and promote current awareness to assist in underpinning written work,
- add value and depth to our students' study experience, and
- support the continuing professional development of all those working and aspiring to work in the built environment.



© UCEM 2024

Source: UCEM (2023) *Getting started with the e-Library* [video], YouTube. Available at: [www.youtube.com/watch?v=iEg8DFUFifY&t=5s](https://www.youtube.com/watch?v=iEg8DFUFifY&t=5s) [accessed 31 May 2024].

At UCEM, we recognise that in an information-rich age and when everyone is pressed for time, it can be a challenge to find good-quality information when you need it.

Whether you are obtaining a qualification, undertaking CPD or researching a particular field, having access to a well-equipped library is essential.

The UCEM e-Library (accessed through the Virtual Learning Environment - VLE) is a comprehensive and valuable online resource, enabling students to access a wealth of subject-specific and credible information to support them throughout their studies and career development.

### What resources are available in the UCEM e-Library?

The e-Library is made up of eleven sections and provides students with around the clock access to online searchable databases from key industry and educational sources, thousands of journals, books, and resources, UCEM's entire collection of study materials and published work and UCEM's dissertation library.



[Back to top](#)

**The sections that make up the UCEM e-Library:**



© UCEM 2017

**Resources available within the UCEM e-Library include** Up-to-date information and online searchable databases from –

**Key educational sources** that include- Taylor and Francis Online, Ingenta Connect, Henry Stewart Publications and HS Talks, vLex | Justis, Westlaw EDGE UK, EBSCO Business Source Premier, Emerald Insight - access to around 2600 e-Book titles and their entire ‘Property Management and the Built Environment’ collection of journals, and

**Industry-specific sources** that include- IHS’s Construction Information Service, *Estates Gazette* (EG) digital journal and EG Radius, *Property Week*, RICS’s BCIS – Building Cost Information Service and ISURV online information service, NEC - New Engineering Contract Academia, BSRIA – Building Services Research and Information Association, and more.

**Where to find help - Overwhelmed by the sheer amount of information out there?**

Not only do libraries provide us with books to read, but they are valuable tools and resources. The UCEM e-Library is continually striving for improvement and changing to meet the demands of today’s technology and ever-expanding volumes of knowledge creation.

The e-Library is here to help make finding up-to-date, credible, and relevant information easier. Access the [2023 e-Library interactive brochure](#) for further information.

[Back to top](#)

**Supported by: Emerald Publishing Ltd**  
**The work of the UCEM e-Library is endorsed**  
**by Emerald Publishing Ltd**



© Emerald Publishing 2021

**Emerald Insight – the online platform for Emerald Publishing.** Emerald champions new ideas in advancing the research and practice of business and management, and manages a portfolio of nearly three hundred journals, including a 'Property Management and the Built Environment' collection that UCEM subscribes to.



© Emerald Publishing 2021

Emerald works in close collaboration with numerous academic (including UCEM) and corporate organisations worldwide. Emerald Publishing endorses the e-Library's tailor-made research reports – a service provided to UCEM tutors to help supplement teaching and learning materials on subject-specific areas.

**[July 2024]** - Here are some Open Access Journal articles available via Emerald, all around the theme of

**'Artificial Intelligence (AI) use within the Education Sector.'**

**Note:** The following article examples are freely available via **Emerald Publishing Open Access:**

1. Wood D and Moss, S H (2024) 'Evaluating the impact of students' generative AI use in educational contexts', *[Journal of Research in Innovative Teaching & Learning](#)*, Vol. (ahead-of-print), No (ahead-of-print), Leeds: Emerald Publishing Ltd [online]. Available at: <https://doi.org/10.1108/JRIT-06-2024-0151> [accessed 5 July 2024]
2. Hidayat-ur-Rehman I (2024), 'Examining AI competence, chatbot use and perceived autonomy as drivers of students' engagement in informal digital learning', *[Journal of Research in Innovative Teaching & Learning](#)*, Vol. (ahead-of-print), No. (ahead-of-print), Leeds: Emerald Publishing Limited [online]. Available at: <https://doi.org/10.1108/JRIT-05-2024-0136> [accessed 5 July 2024]



© UCEM 2021

**Remember:**

“A Librarian is a powerful search engine with a heart, that listens and understands the library and information requirements of others and provides a response in a format that suits their needs” says Lucy Roper, UCEM Information Governance Manager and who can be contacted on the [library@ucem.ac.uk](mailto:library@ucem.ac.uk) email address

[Back to top](#)

## Student Career Services

### UCEM Career Service

UCEM Career Services offer careers Information, Advice and Guidance (IAG) to potential, current and past students. The service is confidential, non-judgmental, and impartial. **Access and read the UCEM Careers interactive brochure and Access UCEM Career Services**

### UCEM Careers Week

- UCEM presented its first online Careers Week event in March. Through workshops, pod casts and interactive presentations, alumni, recruitment specialists and industry leaders shared their views, experience and advice with UCEM students.



**Sessions included the following:**

- “A day in the life of...” with UCEM Alumni
- Sector Insight discussion with UCEM Academics and industry professionals.
- Career Skills Workshop with employers and recruiters
- Creating Impact and Influence sessions; professionalism, leadership and future perspectives

To see the full programme and gain further information, visit the UCEM Careers Service, **Careers Pages – Careers Week, Inform, Connect, Inspire**, via the UCEM secure VLE.

### Building Better Property Professionals

Property Elite’s sole aim is to build better property professionals – supporting your career every step of the way, whether you are completing a RICS accredited degree course, your RICS Assessment of Professional Competence (APC) or simply seeking engaging Continuing Professional Development (CPD).

[Back to top](#)



© 2022 — Property Elite LLP

**Property Elite** provides training and CPD services for property professionals, including students, APC candidates and corporate clients. Their Hot Topic Highlight blog posts will arm you with the information on the hottest topics – ready to tackle an important client meeting or begin revising for your RICS APC final assessment.

This month [**July 2024**] the **Hot Topic Highlight/Blog – *Estates Gazette* (EG) – Know Your Rights of Light**

In this week's blog, Jan Lemen provides an overview of rights of light and what the new RICS Professional Standard means for the profession. Thanks to Natasha Bray, partner and head of daylight/sunlight and rights of light at Rapleys, for her support and commentary for this article.

**Note:** Nothing in this EG article (1 June 2024) constitutes legal, professional or financial advice.

Natural light is particularly important for buildings users' wellbeing – who wants to live or work in a windowless room? The law, therefore, has to balance the right to enjoy natural light and the finite amount of space in the built environment (and need for new development and refurbishment).

**Access further information and Hot Topic Highlight/Blog – *Estates Gazette* – Know Your Rights of Light, in full.** **Note:** UCEM staff and students have full access to *Estates Gazette* via section 5 of the VLE e-Library.

**[Access the Property Elite blog](#)**

**Also – [RICS Property Journal Article on An A-Z of the Landlord & Tenant Act 1954 for APC](#).**

**RICS *Property Journal* – [An A-Z of Inclusive Environments](#).**

- Ensuring an accessible built environment is as much an ethical obligation as a legal requirement.

**Estates Gazette – APC Series -**

- o [RICS APC Pathways, & APC Lifeline 2024 Update](#)
- o [Rent Reviews and Calderbank Offers](#).

**- [Property Elite Hot Topic Highlight blog: A-Z of Investment Terms](#), and [Access Property Elite's 'Building Better Property Professionals', Latest Blogs](#)**

[Back to top](#)

**Note:** The author of most of these blogs, Jen Lemen-Hogarth is an Associate Tutor – UCEM and Partner – Property Elite.

**Lucy's Top Tips** – If you are planning to sit your RICS APC/AssocRICS, make sure you are aware of Property Elite's APC Support services, including submission reviews, question packs, revision quizzes and e-mock interviews (available via the e-Library). You can also download this blog [in audio format](#) and listen whilst on the move. When you're done, you can request further information and a free CPD certificate.

### Other related web-links



© EGi 2023

*Estates Gazette* recently published a supplement entitled '[Starting out in Real Estate](#)'.

This publication highlights the many varied and interesting career opportunities in real estate and has a number of contributions from UCEM. It's an interesting and informative read, covering areas such as:

- **What is Real Estate?** The asset classes, sectors and careers in the industry explained
- **A Day In The Life** – EG ask 19 professionals about their roles and skill sets
- **In Conversation with...** Crown Estate CEO Dan Labbad on how young people can change the world for the better, &
- **All About Apprenticeships** – How a degree apprenticeship works and why one could be right for you.

[GoConstruct.org](#) website highlights the many career opportunities available in construction & the built environment.

[TARGETjobs](#) (incl. [Construction and Property](#)) include graduate career guides and directories available for you to view online and download for future reference covering: [Explore Property](#), [Explore Engineering](#), and [Careers Survival Pack](#).

[House Building Careers](#) – Part of Home Builders Federation (HBF), here you will be able to learn about the home building industry and how it benefits you, your community, and the country as a whole.

[Access to: RICS Careers](#) – What is surveying? See how surveyors shape our communities and tackle global issues like climate change – and discover how you can improve the world around you.

[Back to top](#)

## Building People

### Enabling connections for a competent, diverse, and valued built environment workforce



© UCEM 2021

The aim of 'Building People' was to create a technology platform and collaborative network, which enables connections and seeks to reduce the skills shortages across the Built Environment. 'Building People,' a social enterprise that aims to connect people traditionally not involved in the Built Environment sector with employers seeking to plug the skills gap via an online platform.

#### People Wiki:

#### What are you looking for?

<p><b>Search Organisations</b></p> <p>See what help is available to find work, learning and/or support.</p> <p><a href="#">LEARN MORE</a></p>	<p><b>Find Information</b></p> <p>Our partnership with Designing Building Wiki brings together industry-wide content in one place.</p> <p><a href="#">LEARN MORE</a></p>	<p><b>Ask A Person</b></p> <p>Contact people to gain industry knowledge, experience and guidance.</p> <p><a href="#">LEARN MORE</a></p>
<p><b>Learning &amp; Events</b></p> <p>Find courses, training and events relevant to you.</p> <p><a href="#">LEARN MORE</a></p>	<p><b>Work Opportunities</b></p> <p>Employers opportunities in one place making it easy to find what you're looking for.</p> <p><a href="#">LEARN MORE</a></p>	<p><b>Resources</b></p> <p>Easily access sector-specific material, brought together all in one place.</p> <p><a href="#">LEARN MORE</a></p>

© Building People 2021

The UK needs to build, but there is a shortage of competent and experienced workers, and the workforce we have lacks diversity. Building People joins the dots to help people find employers, opportunities, and resources, and to help employers engage with a more diverse range of talent.

People Wiki (a free, open access knowledge sharing platform for diversity and inclusion, skills and careers, and social value.) is a crucial part of Building People's ambition to create a single platform that brings together a multitude of previously fragmented information, knowledge, resources, opportunities, and needs focused on diversity and inclusion, skills and careers, and social value.

**Related Link: UCEM incubated social enterprise, Building People, becomes a fully-fledged success story** - It is an exciting time for Building People as it announces its three-year plan, which focuses on five key areas:

1. **Profile:** Positioning Building People as the go-to source for equality, diversity and inclusion best practice and activities, and through leadership in the built environment,
2. **Partnerships:** Delivering maximum joined-up impact through the growth and development of Building People's supply and demand networks,
3. **People:** Enabling equality of opportunity through the provision of a simpler and more supported user experience in a fragmented careers landscape,
4. **Policy:** Aligning with and supporting the achievement and enhancement of relevant national sector policy and activity, and
5. **Planning:** Establishing a secure future of Building People as a sector-backed movement for collaborative change across the built environment.

[Back to top](#)



## UCEM Sustainability Hub

Sustainability supports UCEM vision and core purpose to provide truly accessible, relevant, and cost-effective education, enabling students to enhance careers, increase professionalism and contribute to a better sustainable built environment. **Note:** UCEM has a Sustainability Hub within the VLE e-Library where you will find interesting resources, news, articles, projects and publications which support and information 'future skills' for sustainability within the construction, surveying, and property industries.

**LATEST NEWS: UCEM staff and students can now access the Supply Chain Sustainability School**



Reproduced with permission

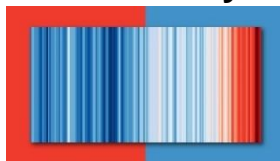
The Supply Chain Sustainability School represents a common approach to developing sustainability competence in the supply chain and is part of a continued commitment to lead the industry into a brighter, more sustainable future.



(**Note:** UCEM staff/students can freely register with their UCEM email address)

[Back to top](#)

## UK sets 'most ambitious' climate target to cut emissions by 78% by 2035



[Image: courtesy Ed Hawkins]

(Climate stripes as shown in this image are sometimes referred to as warming stripes, or climate timelines and are data visualization graphics that use a series of coloured stripes chronologically ordered to visually portray long-term temperature trends.)

[Access further information and the \*PBC Today\* article, 'UK sets 'most ambitious' climate target to cut emissions by 78% by 2035', in full.](#)

## Building Research Establishment (BRE) Sustainability

- Greater sustainability and its many benefits can be achieved for all buildings, homes, organisations, and communities.

The BRE provides leading edge information and advice on all aspects of sustainable that include – Sustainable construction of buildings, Communities, Infrastructure, Sustainable organisations, Materials, products and services, Waste management, Energy management services, and Training and publications.

[Access BRE Sustainability:](#) Practical guidance and support for delivering genuine sustainability benefits.

## Building Cost Information Service (BCIS)

The BCIS has launched a free-to-access benchmark tool – [Built Environment Carbon Database \(BECD\)](#), for infrastructure carbon assessment in the UK construction industry.

## The Routledge Sustainability Hub

The Routledge Sustainability Hub is an innovative Knowledge Centre for the global sustainability community, this Hub offers a wide range of resources for everyone – whether you are a teacher, a student, a professional or a citizen of the earth curious to discover more about the many facets of sustainability.

[Access the Routledge Sustainability Hub](#)

## QSAND and the Sustainability Goals

The UN Sustainable Development Agenda, adopted by world leaders in 2015, maps out a 15-year plan to fight inequality, end poverty and tackle climate change challenges. Quantifying Sustainability in the Aftermath of Natural Disasters (QSAND) is a self-assessment tool to promote sustainable approaches and contributing to aid the achievement of several of these 17 goals in disaster affected global communities:



[Back to top](#)

### Libraries' contribution to SDGs

**Agenda Vision:** Universal literacy  
**Goal 3:** Good health and wellbeing  
**Goal 4:** Contribution to quality education  
**Goal 5:** Culture  
**Goals 5, 9, 7:** ICT skills and access  
**Goals 8 & 10:** Decent work, economic growth, reducing inequality  
**Goal 16:** Access to information

**Note:** Information plays a vital role in just about everything we do.



(UN.org 2022)

Source: Designing Buildings .co.uk Wiki\* (2021) '[Forgetting the big picture when considering sustainability](#)' [online], last edited 19 January. Note: "The Sustainable Development Goals icons and colour wheel are free to use" (UN.org 2021)

#### \* **Note: Use of Wikis as a reference site**

Wikipedia and use of other Wikis are increasingly being used by people in the academic community, as an easy source of information about anything and everything. However, citation of Wikipedia may not be considered acceptable, because Wikipedia is not a creditable source. It is important to note that whilst Wikipedia may be one of the Web's most popular reference sites, it is not classed as a credible resource because anyone can be a contributor to the website.

This can be avoided by following two simple rules:

- 1)** Remember that an encyclopaedia (which includes Wikipedia and any other Wiki) can be a good starting point for research and not an ending point.
- 2)** An encyclopaedia can be good for getting a general understanding of a subject before you extend your study of the subject further. But you then must consider the subject in more depth using books, journals articles and other appropriate and credible resources. What you find in these other sources of information will be more detailed, more precise, and more carefully reasoned than the summary you found in an encyclopaedia. The sources you reference/cite in your work will therefore be these more detailed sources you have used.

(Connors State College 2022)

[Back to top](#)

## UCEM BE Sustainable articles

### UCEM signs up to CIC's new 'carbon zero' climate action plan

UCEM is one of the institutions which has signed up to the Construction Industry Council's (CIC) new climate action plan.

CIC's Climate Change Panel, chaired by its deputy chairman, Stephen Hodder MBE, led on the initiative, with signatories to the plan agreeing that:



**Carbon Zero: the professional institutions' climate action plan**

The signatories to this Action Plan agree that:

- the actions listed are necessary for dealing with the challenge of climate change;
- they will implement those actions appropriate to them as an institution/organisation; and
- they will support the other signatory institutions and organisations in delivering the remaining actions

© CIC 2021

The document, entitled 'Carbon Zero: the professional institutions' climate action plan,' was released last week and coordinates the efforts of built environment institutions in meeting the UK government's 2050 net zero emissions target.

To read the plan, head to the [CIC news story – 'CIC launches a Carbon Zero climate action plan for Professional Institutions'](#).

[Access the article 'UCEM signs up to CIC's new 'carbon zero' climate action plan' in full.](#)

### 5 practical tips for saving energy costs

- The cost-of-living crisis has spread across the globe. Significant increases to the cost of food and energy have outstripped worker's salaries, and spiralling inflation has plunged countless into poverty. While the tenth day of COP27 focussed on the decarbonising our energy systems, UCEM looked at practical ways to save energy that can be actioned without spending too much money.

**1. Avoid leaving appliances on standby** - The average UK household spends around £65 a year on appliances that are left on standby. This is the energy consumed by an appliance when it is not in use and not switched off at the socket. You may not think about the devices that have low-level usage when not in use, such as broadband, smart speakers and telephones, but these are the ones that are usually turned on for 24 hours a day and the amount of electricity they consume adds up.. By remembering to switch off devices more often or buying a standby saver, you could be saving yourself electricity you didn't even know you were consuming.

[Back to top](#)

**2. Draught-proofing windows and doors** - Draught-proofing is one of the most affordable and effective ways to save energy costs. It allows you to keep the warm air in your home by blocking out unwanted gaps that let cold air in – ultimately requiring less energy to heat up your home. By draught-proofing your windows and doors, you could save around £60 a year in a semi-detached house. Similarly, you could also save around £90 a year by draught-proofing an open chimney when not in use. A lot of draught-proofing can be done through simple DIY tasks at home, or professional draught-proofing can cost a bit more but last you longer.

**3. Use your thermostat effectively** – A large portion of your heating bills are absorbed by heating and hot water costs. By doing something as simple as turning down your central heating by just one degree, you could be saving up to £80 a year. You could also invest in a smart thermometer, which will heat your home more efficiently by only warming the room in use. They can be controlled by your phone and adapt to how long it takes to warm a certain temperature, so it can be set at exactly the right time.

**4. Monitor your water usage** - Water waste is something we may not realise is happening in our homes, but they add up and result in a large amount of total energy and water use. A dropping tap can waste more than 5,300 litres of water a year, so it's important to keep an eye on even the smallest amounts of water waster in the homes. By spending one minute less in the shower each day, a family of four could save up to £75 a year on energy and water bills. Similarly, turning off a running tap while you brush your teeth or wash your face can save more than 6 litres of water a minute!

**5. Invest in energy saving appliances, like an air fryer** – While it's good to buy home appliances based on their energy ratings, it's also good to research alternative types of appliances you can buy. One big change you can make is switching to an air fryer for day-to-day cooking rather than using a gas or electric cooker. Research by Utilita showed that on average they run at £55.91 a year, as opposed to a gas cooker on £121.06 per year and electric cooker on £335.57 per year.

**[Access the article '5 practical tips for saving energy costs', in full.](#)**

**Further 'Sustainability' information and articles:**

UCEM's ambition – To be the world's most sustainable university [online]. Available at: <https://www.ucem.ac.uk/sustainability/>

**Also: CIOB - [A Guide to Sustainability in the Built Environment](#)**, offering practical tools and strategies to help professionals embrace sustainable practices during the planning, construction and ongoing operation of a building. Note: This book is also available via the [UCEM e-Library](#).

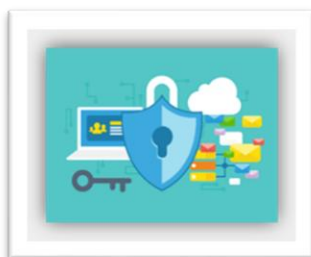
[Back to top](#)



## Information Governance

UCEM is committed to advancing information governance and compliance, ensuring that the services provided comply with the General Data Protection Regulation (GDPR), Data Protection, Freedom of Information, Records management, Copyright, and Information Security.

### Information Governance:



© 2020 iStockphoto LP, Royalty free image

To make sure that information is available in the right place and at the right time to support others, the e-Library ensures that the information services comply with data protection and copyright.

### Data Protection

With new technologies constantly emerging and us finding ourselves moving further into an ever more digital direction, our personal data, how it is used and who has access to it becomes a growing and global concern for all.

The General Data Protection Regulation (GDPR) was the first legislative change in recent years to address these concerns, with a broad aim to invoke a cultural shift in the way organisations manage personal data.

Further information, advice, and guidance on Data protection, GDPR and more can be found at the Information Commissioner's Office (ICO), the UK's independent authority set up to uphold information rights in the public interest, promoting openness by public bodies and data privacy for individuals.

[Access the Information Commissioner's Office \(ICO\) website](#)

### Latest Data Protection News [July 2024]

#### **BBC News: Warning after rise in email phishing scams**

- An increase in scam emails is behind a fresh warning for people in Guernsey. The Office of the Data Protection Authority (ODPA) said it had seen a surge in phishing activity (when fraudsters send scam emails or text message containing links to websites that either access systems or trick users into revealing sensitive information and transfer money) that had compromised emails from the island. **Keywords** include – [Data Breaches](#).

[Access the BBC News article, Thorpe, G. \(2024\) 'Warning after rise in email phishing scams', 27 June, in full.](#)

[Back to top](#)

### **ICO Latest News [July 2024] -**

23 May 2024 – **PSNI facing a £750k fine following spreadsheet error that exposed the personal information of its entire workforce.**

**ICO joins global data protection and privacy enforcement programme** (04/24)

**ICO reassures employers they can share staff data in a mental health emergency** (03/24), and **Related Link:** ICO Blog: **Sharing personal data in an emergency – a guide for universities and colleges.** (09/21)

**Also:** UK Information Commissioner warns against 2024 becoming the year people lose trust in AI

**ICO publishes guidance to ensure lawful monitoring in the workplace** (10/23)

**ICO urges organisations to harness the power of data safely by using privacy enhancing technologies** (06/23)

**Access the Information Commissioner’s Office, ‘News, blogs, and speeches’ section of their website**

### **Further information, advice, and guidance (IAG) provided by the ICO**

The ICO publish detailed IAG on:

- [Guidance on direct marketing and the public sector](#) (ICO, August 2021)
- [Sharing personal data with law enforcement authorities,](#)
- [The Accountability Framework.](#) (ICO, September 2020),
- [Codes of conduct](#) and [certification schemes.](#) (ICO, February 2020)
- When using data analytics on personal data, the ICO is urging all organisations to look at its toolkit. It can be found at **ICO > For Organisations > [Toolkit for organisations considering using data analytics](#)** (ICO, February 2021)
- [Freedom of Information Self-assessment toolkit](#) launched in 2020 helps identify gaps in compliance.
- Further updates have been made to [guidance for handling Subject Access Requests](#) including a [step-by-step guide for small businesses](#)
- [Building a controller-to-controller contract](#) + template contract with guidance

### **ICO What’s new? [June 2024]**

The Information Commissioner’s Office (ICO) website has a ‘What’s new’ section to highlight and link to any changes in their **ICO Guide to Data Protection** as they occur, for example: The ICO have updated their guidance on **Regulation 13** (when personal information is exempt from disclosure under these access regimes when certain conditions are met. (12/23).

[Back to top](#)

The ICO have published:

Guidance on the [national security exemption](#) in Part 2 of the DPA18. (03/21)

Updated BCR communication following the EU-UK Trade and Co-operation Agreement to the [International transfers after the UK exit from the EU Implementation Period](#). (01/21)

[Data Sharing Code of Practice](#), alongside a [data sharing information hub](#) with further resources and support. (12/20)

**Further guidance provided by the ICO.**

[Read the Blog: 'Access to information: driving change through education, engagement and enforcement,' in full](#)

## Copyright



© iStock (2021)

“It is important to remember that Copyright material in digital form is protected in exactly the same way as Copyright material in any other format. For example, text and images on a website are protected by copyright in the same way as printed material. Please note: if there is something you really want to use for learning materials and someone else owns the copyright ... [permission must be sought!](#)”

The copyright owner may wish to charge you, but often they just appreciate you asking them if they are happy for you to acknowledge their work and inform them of how the information will be used and who it will be circulated to.”

*Source:* Salmon, Prof. G., (2013), *E-tivities*, London: Routledge

***Introducing Copyright: A plain language guide to Copyright in the 21<sup>st</sup> Century*** - Computers and the Internet have transformed the way we produce and distribute information and entertainment. This book explains copyright protection and what it means for copyright holders and copyright users. It also introduces readers to contemporary topics: (i) digital rights management, (ii) open licences, (iii) software patents & (iv) copyright protection for works of traditional knowledge.

*Source:* Hofman J (2009) *Introducing Copyright: A plain language guide to Copyright in the 21<sup>st</sup> Century* [e-book], Vancouver: The Commonwealth of Learning.

 **creative commons** [CC-BY-NC-ND](#)

[Access free copies of this book \(in PDF and EPUB formats\)](#)

[Back to top](#)

## The Copyright Licensing Agency Ltd (CLA)

The CLA are a licensing body as defined by the Copyright, Designs and Patents Act 1988 c.48 (as amended) ["CDPA"]

The CLA licence organisations to copy and re-use extracts from print and digital publications on behalf of copyright owners – authors, publishers, and visual artists. By 'copying' the CLA means photocopying, scanning and re-use of content from magazines, books, journals, electronic and online publications, as well as press cuttings or documents supplied by a licensed third party.

Having a CLA licence helps to reduce the risk and potential cost of copyright infringement. This requirement applies to any organisation in the business, education, public or charitable sectors. **Note:** UCEM holds a **CLA 'Higher Education Photocopying and Scanning Licence'**

**LATEST:** [Access the newly upgraded Copyright Licensing Agency \(CLA\) website for further information](#)

## CLA Check Permissions tool

The [CLA Check Permissions tool](#) is an online search tool that lets you quickly find out what you can copy under your organisation's CLA licence. Whether you'd like to photocopy and distribute an article to colleagues or upload a report to an intranet or VLE, the CLA Title Search simplifies the steps required to ensure compliance.

[Check permission at CLA Higher Education Licence.](#)

[Introducing the CLA Step-by-Step Guide and Interactive Toolkit for those checking permissions within their licence.](#)

## Latest Copyright News [July 2024]

### World's biggest music labels sue over AI copyright

- The world's biggest record labels are suing two artificial intelligence (AI) start-ups over alleged copyright violation in a potentially landmark case.

Firms including Sony Music, Universal Music Group and Warner Records says Suno and Udio have committed copyright infringement on an "almost unimaginable scale."

[Read the full BBC news item, Sherman, N, 'World's biggest music labels sue over AI copyright.'](#)

**Also:** [New AI systems collide with copyright law](#), and [What is artificial intelligence, and will it take jobs?](#)

[Latest 'BBC Copyright News'](#) incl. [Banksy Copyright case](#)

### Government Guidance – Changes to copyright law from 1 January 2021

- This guidance covers the impacts on UK right holders, businesses, cultural heritage institutions and consumers. Note: It is not legal advice.

[Back to top](#)

[Access the GOV.UK 'Changes to copyright law from 1<sup>st</sup> January 2021', in full.](#)

**Keeping abreast of the latest developments in Information Governance:** [Copyright Resources](#) – Naomi Korn Associates has developed free and openly licensed copyright, licensing and data protection help resources.

### Copyright & Information Technologies in Education (CITE)



© CLA 2020

The CITE Forum is a place to discuss the CLA's technology and licence offerings (such as the Digital Content Store) but also an opportunity for Higher Education Institute's to network, share and disseminate relevant copyright information.

As UCEM Information Governance Manager I regularly attend the Copyright Licensing Agency (CLA) CITE Forum and presented on '[UCEM's e-Library: Our Story So Far](#)', at the [CITE Winter 2021 Forum](#). Source: CLA (2021) [UCEM e-Library: Our story so far](#), a presentation given at the Winter 2021 CITE Forum [video], YouTube. Available at:

[www.youtube.com/watch?v=GmuENzHeGO0&feature=youtu.be](http://www.youtube.com/watch?v=GmuENzHeGO0&feature=youtu.be) [accessed 26 January 2024]. Ref: From 58:05 until 1.28:41.

### Further information - Copyright Licensing Agency, CITE

- '[CITE – 2020 Vision](#)', [CITE Magazine, Winter 2019, No. 3](#)
- '[A CITE to behold](#)', [CITE Magazine, Summer 2019, No. 2](#) &
- [CITE Magazine - A biannual magazine for the CITE Community, Winter 2018, No. 1](#).

UCEM is committed to advancing information governance and compliance, ensuring that the services we provide comply with **GDPR, Data Protection, Records Management, Copyright, and Information Security**. **LATEST:** In 2024 the UCEM e-Library, in collaboration with UCL, produced a short [Copyright Essentials e-learning course](#) (accessed via the UCEM secure Virtual Learning Environment). This e-learning will help staff and students better understand copyright and how to apply this understanding to studies, research and other activities.

Another part of my role as involves keeping abreast of the latest developments and benchmarking the work I do against that of others. I also undertake regular Continuing Professional Development (CPD), and an element of this is attending the CITE Forum attending events and conferences provided through my professional body, CILIP – The Library and Information Association, and others.

### CILIP's National Copyright Conference 2024

This national and virtual conference was held on 23<sup>rd</sup> May and in



[Back to top](#)

association with Naomi Korn Associates, as well as great speakers and further experts in the field in attendance.

### #CILIPCopy24 / #copyright

The Annual CILIP Online Copyright Conference is an ideal and unique opportunity for all librarians, archivists and information professionals to update their knowledge and professional practice in this crucial area. Additionally, it appealed to those who want to update their general copyright, licensing and publishing knowledge.

This year's conference theme is "**Copyright: New Horizons – Attack of the Bots.**" The programme explored different relationships, such as those between copyright and ethics, copyright and licensing, copyright and creators, AI and IP – and all shades in-between. Discussions considered how these sometimes symbiotic and sometimes more tension-driven relationships play out in the day-to-day, particularly within the contexts of libraries, universities and cultural heritage organisations. The conference programme covered the following:

- **AI, IP and ethics in the context of black heritage creators'**
- **The Practical Impact of AI on Academic Research,**
- **AI in the UK heritage sector,**
- **The Future of Copyright,** and
- **CLA Licensing and Technology Updates.**

Sessions covered broad copyright impact for the profession incl.

- **Keynote: AI, IP and ethics in the context of black heritage creators'**

***Pawlet Brookes MBE**, Founder, DEO and Artistic Director, Serendipity Institute for Black Arts and Heritage*

- **Practical Impact of AI on Academic Research**

***Matthew Lambert**, Head of Copyright, Policy and Assurance, British Library.*

We are in a time of flux. Since the arrival of ChatGPT at the end of 2022, AI development has moved forward in leaps and bounds, so fast that the regulations to govern it have yet to be written. In the meantime, all the stakeholders are implementing their own policies and processes to adapt. In this session, Matt will talk us through the changes and the onward impact they are having on the educational, academic and cultural heritage sectors.

- **AI in the UK heritage sector**

***Dr Mathilde Pavis**, Legal Consultant, Pavis Consultancy*

Dr Mathilde Pavis discussed what Artificial Intelligence can do for the UK heritage sector and turns the question on its head to ask what the heritage sector can do for Artificial Intelligence.

The session looked at how Artificial Intelligence is used across the UK heritage sector today, and how organisations can take advantage of Artificial Intelligence to support their work. This

[Back to top](#)

presentation draws on case studies from organisations throughout the UK that have used AI technologies in three areas of work: heritage management, visitor experiences and day-to-day operations.

The discussion stresses that, as with any tool, the benefits of Artificial Intelligence can only be accessed if the risks associated with the technology are adequately managed. This means that heritage organisations should carefully plan what, how and when it is appropriate to use Artificial Intelligence, based on their priorities and resources.

Turning the question on its head, the session closes by highlighting an important, much less discussed fact: heritage institutions can play a critical role in AI innovation, as trusted knowledge organisations and the custodians of rich datasets. The heritage holds valuable assets in the form of skills, data, public trust, which are needed for AI innovation to serve the public interest.

- **The Future of Copyright**

*Louis Coiffait-Gunn, CEO of CILIP*

Louis Coiffait-Gunn, CILIP's new CEO and Naomi Korn will discuss the future of copyright and both the challenges and opportunities AI might bring to rights-holders and users.

- **CLA Licensing & Technology Updates**

*James Bennett, Head of Rightsholder Relations, Copyright Licensing Agency.*

This session provided an update on the Copyright Licensing Agency's latest licensing initiatives, including developments around AI and text and data mining.

- **'Optimism or anxiety'? Co-creating a copyright literacy strategy for complex contemporary challenges**

*Timothy Riley, Information Adviser (Copyright and Licensing), University of Aberdeen*

Copyright has long been seen as challenging. Today, ever-evolving technology throws up new questions and dilemmas, even for seasoned copyright specialists. Is there any hope then for non-experts grappling with this complexity and uncertainty? How can university students and staff rise to the challenges and opportunities and engage with copyright issues in the university and beyond?

At the University of Aberdeen, we are meeting this challenge by rolling out an institutional copyright literacy strategy to empower our university community to create and reuse legally and ethically. Our aim is to enable all our staff and students to make informed,

[Back to top](#)

risk-aware decisions based on a sound understanding of the fundamentals of copyright law. They should also be able to think critically, question assumptions, and apply their understanding in new and unfamiliar situations. As well as being a key part of individuals' information and digital competency, this will support key areas of university activity, including teaching, research, and graduate skills and employability.

Find out how we drew on best practice from across the sector and engaged with our community to create a strategy that aligns with our members' needs and our university's wider strategic aims. We will look at the steps we took, and our progress so far in embedding the strategy and rolling out a copyright literacy initiative across our university.

- **How do we achieve success as Solo Librarians?**

*Lucy Roper*, Information Governance Manager, UCEM

Being a solo librarian or librarian in a small team with limited help can be daunting. Librarianship is multi-faceted, and while plenty of books cover library work in detail, few provide a single point of reference from the perspective of a solo librarian who must juggle multiple tasks at one time and deal with all aspects of library provision on their own.

AI is creeping increasingly into our lives, and libraries have undoubtedly witnessed a rapid transformation due to AI. As we strive for continual improvement, we must keep abreast of the latest developments and follow the ever-changing library landscapes and popularity of information systems and services, online library tools and technological advancements.

I therefore, took it upon myself to write a practical handbook providing a one-stop-shop with accompanying time-saving templates (easily downloadable via the eBook version and companion website) that can be adapted to help aid the daily activities and processes (including the effective use of copyrighted material and undertaking yearly copyright reporting) often faced by those working in information, knowledge, libraries and related disciplines.

I follow the year in the life of a solo librarian, providing a yearly planner and timeline of activities, with supporting guidance to aid each step of the way. This guidance can then be applied, adapted and tailored to other working practices. In this lightning talk, I will share the foundations of the book, identify some of the lessons I have learned, and provide examples of the types of guidance available.

Further information is available at: CILIP (2024 '[CILIP Copyright Conference 2024 programme](#)'). CILIP.org.uk, Events.

[Back to top](#)

## The Challenges of Remote Working

- The challenges of remote working and points to consider from a data privacy perspective. Provided within this article are points to consider from a data privacy perspective that include:

1. **Have a clear statement to all staff** stressing that “The protection of personal data that we hold, and use is important to us and must be always handled in a way that is compliant with data protection law and our Data Protection and Privacy policies. While we must adapt to comply with the official guidance, we will adjust our working processes to allow us to deliver our services. These are time limited instructions that will be kept under review. At the end of the period then all data that is held temporarily on personal devices as a direct result of this exceptional times, will be deleted.” (Tullo 2020)
2. **Set out what use of data**, contact lists, customer documents are being allowed.
3. As part of this exceptional response to homeworking **keep a full record of where staff are working from and what equipment they are using.**
4. **State that you have assessed the best way of ensuring homeworking efficiency** and are proposing that personal devices and mobile phones can be used. That you will review this [weekly seems sensible at present] in line with experience and how staff report it is working.
5. **Reissue and emphasize your usual security arrangements –** Virus and password protection, not leaving data visible to others, having a PIN code, or not sharing their device with others in their family or household.
6. **Take care to be aware where data is being stored**, even if temporary so that the security risk is managed and assessed.
7. For the **weekly reviews –** have your Senior Leadership Team note the number of staff using personal devices, any queries, or issues they are finding and demonstrate that you are monitoring the situation and are flexible in closing it down if any specific concerns arise.
8. Choose your **collaboration tool of choice** and consider recording online meetings and note actions especially where team members are geographically spread out and where broadband speeds and kit may vary in quality.
9. You might also consider having a **standard introduction for homeworking staff** to explain that they are homeworking and not in the office, so callers understand the position.
10. This is where a nominated **Data Protection Office (DPO)** or Data Officer can support the senior team in the messaging to colleagues.

There are growing numbers of tips and survival guides online that include: Information Commissioner’s Office (ICO) [Data protection and coronavirus: what you need to know](#).

[Back to top](#)

Source: Tullo C, OBE (2020) '[The Challenges of Remote Working at Present](#)'. © [Naomi Korn Associates](#), 2020. Some Rights Reserved. The text is licensed for use under the Creative Commons Attribution Share Alike Licence (CC BY SA).

**Regarding UCEM we have followed these pointers:**

(i) A clear statement went to staff, and UCEM has a designated area within their central SharePoint site for Business Continuity Planning (BCP) that has the following folders containing

- Official Communications [Internal and External]
- Human Resources (HR) guidance and support
- Information Technology (IT) technical support, guidance, and documents

Data Protection guidance (incl. a new guidance note entitled, 'Processing Personal data when remote working.')

- The [UCEM Data Protection and Privacy Policies](#) have been updated and should be read in conjunction with IT Policies).
- & Hints and tips for working from home.

(ii) A retention and destruction schedule is in place that collates lists of data used within respective teams and departments; (iii) A register is kept of where staff are working from and equipment used; (iv) Regular online meetings and weekly All-staff keep everyone updated and ensuring regular communication; (v) IT provide regular updates and guidance; (vi) GDPR 2020 training has been launched to re-enforce the importance of knowing how data is used and where it is being stored, even if temporary so that risk is managed and assessed; (vii and viii) online equipment and collaboration tools are well established at UCEM as an online education provider, but are regularly monitored; (ix) As mentioned above, hints and tips for working from home are provided, & (x) UCEM has a designated Data Protection Officer (DPO).

Please note: There are regular updates -

- (i) On the [UCEM Website](#),
- (ii) [VLE Help Page](#) (for students), and
- (iii) within the [UCEM Website Home > Supported Online Learning > e-Library](#) current awareness services, incl. Information blog and *Knowledge Foundations* (for all).

**#BE Informed**

(iv) A short [UCEM e-Library video](#) (used within UCEM Marketing, [Social Media business channels i.e. LinkedIn](#) to promote the e-Library, *Knowledge Foundations*, regular information blogs, and more)

**“Perseverance will get you anywhere.”**

@NASAPersevere / #NASAPersevere

## A to Z of useful references and web-links:

A - B - C - D - E - F - G - H - I - J - K - L - M

N - O - P - Q - R - S - T - U - V - W - X - Y - Z

[Back to top](#)

### A

**Advance HE** (Previously HEA – Higher Education Academy) is dedicated to helping higher education shape its future. Providing insight, enhancing organisational performance, developing, and connecting people, and accrediting achievements. Advance HE [online]. Further information is available at: [www.advance-he.ac.uk](http://www.advance-he.ac.uk) [accessed 26 July 2024]

**American Society of Civil Engineers** (ASCE) Civil Engineering database provides free access to over eighty thousand abstracts taken from ASCE publications since 1973. ASCE [online]. Further information is available at: [www.asce.org](http://www.asce.org) [accessed 26 July 2024]

**Association of Researchers in Construction Management** (ARCOM) brings together all those interested in construction management research. It aims to further the advancement of knowledge in all aspects of management in construction by support education, dissemination, and research. ARCOM [online]. Further information available at: [www.arcom.ac.uk](http://www.arcom.ac.uk) [accessed 26 July 2024]

**ARCOM Abstracts database** – contains open access of every ARCOM conference paper since 1997 and is now a major resource for all active researchers.

**ARCOM Newsletters** - contains the latest news from the industry.

**AJ Buildings Library** (AJBL) – The AJ Buildings Library highlights thousands of exemplar projects, most from the last 20 years but including major projects back to 1900. Available at: [www.ajbuildingslibrary.co.uk/](http://www.ajbuildingslibrary.co.uk/) [accessed 26 July 2024] (This valuable resource is just one part of the *Architects' Journal* subscription, available via the VLE e-Library > OpenAthens Library login > Construction Information Service (CIS) and/or EBSCO Business Source Ultimate).

[\[Back to A to Z\]](#)

### B

**Barbour ABI** [online]. Explore the latest Construction Market Analysis Reports, for free. Further information available at: <https://barbour-abi.com/resources/reports/> [accessed 26 July 2024]

**BBC Search and BBC Education** [online]. Further information available at: [www.bbc.co.uk/search](http://www.bbc.co.uk/search) and [www.bbc.co.uk/news/education](http://www.bbc.co.uk/news/education) [accessed 26 July 2024]

**BIDSTATS** [online] – Free UK tenders' portal. Find UK public sector contracts and further information available at: <https://bidstats.uk/> [accessed 26 July 2024]

**BIM Task Group** – The Building Information Modelling (BIM) Task Group support and develop the objectives of the Government Construction Strategy and the requirement to strengthen the public sector's capability in BIM implementation [online]. **N.B.** This group and programme are now part of the University of Cambridge, **Centre for Digital Built Britain (CDBB)** [online]. Further information

is available at: [www.cdcb.ac.uk/AboutDBB/FAQs](http://www.cdcb.ac.uk/AboutDBB/FAQs) [accessed 26 July 2024]. Please refer to question 9 – What is the Digital Built Britain Programme? specifically.

**BIMForum** – The BIMForum’s mission is to facilitate and accelerate the adoption of building information modelling (BIM) in the AEC (Architecture, Engineering and Construction) industry. Further information is available via the BIMForum Website [online] and at: <http://bimforum.org> [accessed 26 July 2024]

**BOMA International** (Building Owners and Managers Association International) – a federation of 91 BOMA U.S. associations and seventeen international affiliates. Founded in 1907, BOMA’s mission is to advance a vibrant commercial real estate industry through advocacy, influence, and knowledge. **BOMA Research and Resources** [online] and available at: [www.boma.org/BOMA/Research-Resources](http://www.boma.org/BOMA/Research-Resources) [accessed 26 July 2024]

**British and Irish Legal Information Institute** (BAILLI) Case Law Search [online]. Further information available at: [www.bailii.org/form/search\\_cases.html](http://www.bailii.org/form/search_cases.html) [accessed 26 July 2024]

**British Council of Shopping Centres** (BCSC) was the professional body and authoritative voice for retail-led regeneration and for the management of and investment in shopping places [online]. Note: BCSC has changed and is now **REVO – Retail. Property. Community.**

**British Property Federation** (BPF) – The British Property Federation is a membership organisation devoted to representing the interests of all those involved in real estate ownership and investment. BPF [online]. Further information available at: <https://bpf.org.uk> [accessed 26 July 2024]

**Building Conservation.com** [online] – Information resources for conservation, restoration, and repairs. Further information is available at: [www.buildingconservation.com](http://www.buildingconservation.com) accessed [accessed 26 July 2024]

**Building Conservation.com Articles directory by subject** [online]. Available at: [www.buildingconservation.com/articles/articles.htm](http://www.buildingconservation.com/articles/articles.htm) [accessed 26 July 2024]

**Building Engineer** [online] – Building Engineer website covers news and insights from the following topics: Building & Fire Safety; Business & Management; Construction & Building Materials; Energy & Sustainability; Health, Safety & Wellbeing; Policy & Regulations; Refurbishment; Technology & Digital Construction. Further information is available at: [www.buildingengineer.org.uk/](http://www.buildingengineer.org.uk/) [accessed 26 July 2024]

**Building People** - a technology platform and collaborative network, which enables connections and seeks to reduce the skills shortages across the Built Environment. Building People [online]. Further information is available at: [www.buildingpeople.org.uk](http://www.buildingpeople.org.uk) [accessed 26 July 2024]

**Building Research Establishment** (BRE) [online] is an independent and impartial, research-based consultancy, testing and training organisation, offering expertise in every aspect of the built environment and associated industries. Further information available at: <https://bregroup.com/about-us> [accessed 26 July 2024]

**BRE A-Z of BRE Services** (from Accreditation to Zero Carbon) [online]. Further information is available at: <https://bregroup.com/a-z/> [accessed 26 July 2024]

**BRE Case Studies** [online]. Further information is available at: <https://bregroup.com/expertise/case-studies/> [accessed 26 July 2024]

**Building Services Research and Information Association** (BSRIA) [online]. BSRIA is a test, instrumentation, research, and consultancy organisation, providing specialist services in construction and building services. Available at: [www.bsria.co.uk](http://www.bsria.co.uk) [accessed 26 July 2024]

**Building talk** [online]. Available at: [www.buildingtalk.com](http://www.buildingtalk.com) [accessed 26 July 2024] *Building Talk* is an email newsletter for Architects, Civil Engineers and Building Services Contractors.

**Built Environment Carbon Database** (BECD) is a free-to-use repository of whole-life carbon assessments of built assets and product LCA data. BECD [online]. Available at: <https://carbon.becd.co.uk/> [accessed 26 July 2024]

**[Back to A to Z]**

## C

**Campaign to Protect Rural England** (CPRE) campaign for a beautiful and living countryside. They work to protect, promote, and enhance our towns and countryside to make them better places to live, work and enjoy, and to ensure the countryside is protected for now and future generations. CPRE [online]. Available at: [www.cpre.org.uk](http://www.cpre.org.uk) [accessed 26 July 2024]

**CPRE Resources** provides the latest news articles, policy guidance notes, published reports and research surrounding the following - Countryside, Farming and food, Housing and planning, Energy and Waste, and Transport. CPRE Resources [online]. Available at: [www.cpre.org.uk/resources](http://www.cpre.org.uk/resources) [accessed 26 July 2024]

**CBRE** – With more than 100,000 professionals in over 100 countries, CBRE is the global leader in commercial real estate services and investment. CBRE [online]. Available at: [www.cbre.co.uk](http://www.cbre.co.uk) [accessed 26 July 2024]

**CBRE Insights and Research** - CBRE sets the standard for global real estate research by providing clients with accurate and insightful market knowledge. CBRE [online]. Available at: [www.cbre.co.uk/insights](http://www.cbre.co.uk/insights) [accessed 26 July 2024]

**Centre for Architecture and Built Environment Research** (CABER) seeks to develop innovative approaches, procedures, technologies, and techniques that support the design, management, reconfiguration, maintenance and operation of buildings, their fabric, and the environments they create. Note: CABER incorporates the previous Centre for Construction and Property Research (CPRC). CABER [online] and available at: [www1.uwe.ac.uk/et/research/caber.aspx](http://www1.uwe.ac.uk/et/research/caber.aspx) [accessed 26 July 2024]

**The Center for Construction Research and Training** (CPWR) is dedicated to reducing occupational injuries, illnesses, and fatalities in the construction industry through research, training, and service programs. CPWR [online] and available at: [www.cpwr.com](http://www.cpwr.com) [accessed 26 July 2024]

**Centre for Digital Built Britain** (CDBB) is a partnership between the Department of Business, Energy & Industrial Strategy, and the University of Cambridge to deliver a smart digital economy for infrastructure and construction for the future and transform the UK construction industry's approach to the way we plan, build, maintain, and use our social and economic infrastructure. CDBB [online]. Available at: [www.cdbb.cam.ac.uk/AboutDBB](http://www.cdbb.cam.ac.uk/AboutDBB) [accessed 26 July 2024]

**Centre for Sustainable Energy** (CSE) is an independent national charity that shares our knowledge and experience to help people change the way they think and act on energy.

**CSE Resources** [online] include - Reports & publications, Toolkits, Advice leaflets, Websites, *Energise* newsletter, Videos on The fundamentals, Improving your community building, Community-wide energy saving projects, Neighbourhood and low carbon planning, Renewable energy projects, and further Resources for schools and educators. Available at: [www.cse.org.uk/local-energy/resources](http://www.cse.org.uk/local-energy/resources) [accessed 26 July 2024]



**Chartered Association of Building Engineers** (CABE) is a member-focused non-profit organisation. CABE shares knowledge, raises standards, and develops professionals, enabling a professional construction sector that works to create better, safer, and more sustainable buildings that enhance people's lives. CABE [online]. Available at: <https://cbuilde.com/> [accessed 26 July 2024]

**Chartered Institute of Building** (CIOB) [online]. The Chartered Institute of Building is the international voice of the building professional, representing an unequalled body of knowledge concerning the management of the total building process. Available at: [www.ciob.org](http://www.ciob.org) [accessed 26 July 2024]

**CIOB Library** Incl. Library and Information Services [online]. Available at: [www.ciob.org/learning/library](http://www.ciob.org/learning/library) [accessed 26 July 2024]

**CIOB People** - construction's new people development resource, reaching 55,000 industry professionals. [online]. Available at: <https://ciobpeople.com/> [accessed 26 July 2024]

**CIOB's Construction Management journal** (formerly *Construction Manager*) [online]. Available at: <https://constructionmanagement.co.uk/> [accessed 26 July 2024]

**CIOB's Global Construction Review journal** [online]. Available at: [www.globalconstructionreview.com/](http://www.globalconstructionreview.com/) [accessed 26 July 2024]

**CIOB BIM+** online newsletter [online]. Available at: [www.bimplus.co.uk](http://www.bimplus.co.uk) [accessed 26 July 2024]

**Chartered Institution of Building Services Engineers** (CIBSE) – the prime source of expertise in the Building Services Industry. CIBSE [online]. Available at: [www.cibse.org](http://www.cibse.org) [accessed 26 July 2024]. N.B. Within the CIBSE website you can '**CIBSE - Search the Knowledge Portal**' covering themes such as BIM, Building Regulations, FM, Facades, Fire Safety, Lighting and Heating, Management, and project management, Residential, Sustainability, and more.

**China Dialogue** [online] – China and the world discuss the environment. Available at: [www.chinadialogue.net](http://www.chinadialogue.net) [accessed 26 July 2024]

**CIBSE Journal** [online]. Available at: [www.cibsejournal.com](http://www.cibsejournal.com) [accessed 26 July 2024].

**The CIT-eA Project Creating Innovative Technology – Enhanced Assessments** – a research project that explored ways to increase the number of assessments in Further and Higher Education using technology. The CIT-eA Project [online]. Available at: <http://citea.digitalinsite.co.uk> [accessed 26 July 2024]

**Cities / buildings images database** [online]. Available at: [www.washington.edu/ark2](http://www.washington.edu/ark2) [accessed 26 July 2024] is a collection of images of buildings and cities from around the world aimed at students, researchers, and educators.

**C-Link** is a procurement software company who also provide resources (incl. guides, eBooks, and other materials) created to help you make more money on your construction project. C-Link [online]. Available at: [www.C-Link.com](http://www.C-Link.com) [accessed 26 July 2024]

**Commercial Real Estate Services** (CBRE) is the world's largest real estate services provider, with a preeminent leadership position in virtually all key business centers globally. CBRE [online]. Available at: [www.cbre.co.uk](http://www.cbre.co.uk) [accessed 26 July 2024]

**Community-Led Housing** (CLH) Toolkit: a resource for local authority and housing professionals' [online]. Available at: [www.communityledhomes.org.uk/community-led-housing-toolkit](http://www.communityledhomes.org.uk/community-led-housing-toolkit) [accessed 26 June 2024]. This Toolkit provides a wealth of technical and non-technical information on a

broad range of issues relevant to CLH. There are five Toolboxes, covering (i) Housing (ii) Communities (iii) Legal (iv) Planning and (v) Finance.

**Confederation of British Industry** (CBI) is the UK's premier business lobbying organisation, providing a voice for employers at a national and international level. CBI [online]. Available at: [www.cbi.org.uk](http://www.cbi.org.uk) [accessed 26 July 2024]

**Conference on Training in Architectural Conservation** (COTAC) was formed in 1959 to improve the standard of education of everyone involved in building conservation, including craftsmen, professionals, and homeowners. COTAC [online]. Available at: <http://ihbconline.co.uk/cotac2> [accessed 26 July 2024]

**COTAC Digital Bibliography** [online]. Available at: [http://cotac.global/digital\\_bib/](http://cotac.global/digital_bib/) [accessed 26 July 2024]

**Constructing Excellence** (delivered with **bre**) is a platform for industry improvement to deliver excellence through clients, industry, and users through collaborative working. Resources include publications, tools, and newsletter. Constructing Excellence [online]. Available at: <http://constructingexcellence.org.uk/> [accessed 26 July 2024]

**Construction Enquirer** is a news website in construction. Construction Enquirer [online]. Available at: [www.constructionenquirer.com](http://www.constructionenquirer.com) [accessed 26 July 2024]

The **Construction Index** [online] provides a wide range of information services for the UK construction industry, that include a search engine of construction companies, daily construction news, market data, email newspaper letter, and Case Law analysis and legal commentary. Further information is available at: [www.theconstructionindex.co.uk](http://www.theconstructionindex.co.uk) [accessed 26 July 2024].

**Construction Industry Council** (CIC) – The representative forum for the professional bodies, research organisations and specialist business association in the construction industry. CIC [online] and available at: <http://cic.org.uk> [accessed 26 July 2024]

The **Construction Industry Research and Information Association** (CIRIA) [online]. Further information and resources are available at: [www.ciria.org/default.aspx](http://www.ciria.org/default.aspx) [accessed 26 July 2024]

**Construction Industry Training Board** (CITB) is the training board for the construction industry and partner in Construction Skills, the Sector Skills Council. CITB [online]. Available at: [www.citb.co.uk](http://www.citb.co.uk) [accessed 26 July 2024]

**Construction Manager** is the magazine of the Chartered Institute of Building (CIOB) [online] and available at: [www.constructionmanagermagazine.com/](http://www.constructionmanagermagazine.com/) [accessed 26 July 2024]

**Construction News** [online]. Available at: [www.constructionnews.co.uk](http://www.constructionnews.co.uk) [accessed 26 July 2024]

**Construction Products Association** (CPA) represents the UK's manufacturers and distributors of construction products and materials. Construction Products Association [online]. Further information is available at: [www.constructionproducts.org.uk](http://www.constructionproducts.org.uk) [accessed 26 July 2024]

**Construction Project Information Committee** (CPIC), responsible for providing best practice guidance on the content, form, and preparation of construction production information, and making sure this best practice is disseminated throughout the UK construction industry. CPIC [online]. Available at: [www.cpic.org.uk](http://www.cpic.org.uk) [accessed 26 July 2024]

**Construction and Property Research Centre** (CPRC), University of the West of England (UWE) – the CPRC's research activity is focused around the three inter-related stages of the built environment lifecycle, namely design, construction, and maintenance. Note: The UWE **Centre for Architecture and Built Environment Research** (CABER) now incorporates the CPRC.

**COPAC\*** exposes rare and unique research material by bringing together the catalogues of c.90 major UK and Irish Libraries. In a single search you can discover the holdings of the UK's national libraries (including the British Library), many University libraries, and specialist libraries. Note: From August 2019 Copac was replaced by [Jisc's Library Hub Discover](#).

**Copyright Licensing Agency (CLA)** [online]. The CLA are a licensing body as defined by the Copyright, Designs and Patents Act 1988 c.48 (as amended) ["CDPA"]. The CLA licence organisations to copy and re-use extracts from print and digital publications on behalf of copyright owners. Available at: [www.cla.co.uk](http://www.cla.co.uk) [accessed 26 July 2024]

**Council for British Archaeology (CBA)** is an independent charity bringing together members, supporters, and partners to give archaeology a voice and safeguard it for future generations. Archaeology for all [online]. Available at: <http://new.archaeologyuk.org> [accessed 26 July 2024]

[\[Back to A to Z\]](#)

## D

**Delta T** [online] is the Building Services Research and Information Association's quarterly journal. Bracknell: BSRIA [online]. Available at: [www.bsria.com/uk/knowledge/bookshop/delta\\_t/](http://www.bsria.com/uk/knowledge/bookshop/delta_t/) [accessed 26 July 2024]

**Designing Buildings Wiki** [online] and available at: [www.designingbuildings.co.uk/wiki/Home](http://www.designingbuildings.co.uk/wiki/Home) [accessed 26 July 2024] is an industry-wide, cross-discipline forum for finding and sharing information.

**Designing Buildings Wiki – Student resources** [online] and available at: [www.designingbuildings.co.uk/wiki/Student\\_resources](http://www.designingbuildings.co.uk/wiki/Student_resources) [accessed 26 July 2024] has a wide range of resources aimed at students of the built environment, as shown here.

**Designing Buildings Wiki – Construction industry acronyms** [online] and available at: [www.designingbuildings.co.uk/wiki/Construction\\_industry\\_acronyms](http://www.designingbuildings.co.uk/wiki/Construction_industry_acronyms) [accessed 26 July 2024] providing a list of commonly used construction industry acronyms.

The **Design Council** [online] champions great design that improves lives and makes things better and available: [www.designcouncil.org.uk](http://www.designcouncil.org.uk) [accessed 26 July 2024]. See also [Inclusive Design Hub for the Built Environment](#) (a project of The Design Council).

**Directory of Open Access Books (DOAB)** is a service which harvests details of academic and mainly peer-reviewed books published on open access. DOAB [online]. Available at: [www.doabooks.org/doab](http://www.doabooks.org/doab) [accessed 26 July 2024]

**Directory of Open Access Journals (DOAJ)** covers all open access scientific and scholarly journals, using a quality control system to guarantee the content. DOAJ [online]. Available at: <https://doaj.org> [accessed 26 July 2024]

[\[Back to A to Z\]](#)

## E

**Education and Employers Research** - Online research library marks its tenth anniversary. This online library provides a comprehensive repository of different and effective approaches to employer engagement and careers education. It brings together the latest thinking with selected research published over the past 40 years. Education and Employers [online]. Available at: [www.educationandemployers.org/research-type/research-library](http://www.educationandemployers.org/research-type/research-library) [accessed 26 July 2024]

**The Economics Network** [online] provides publications, events, and other resources to support university teachers of economics throughout the UK and worldwide. Available at: [www.economicsnetwork.ac.uk](http://www.economicsnetwork.ac.uk) [accessed 26 July 2024]

**EngineeringUK** is a not-for-profit organisation, which works in partnership with the engineering community to inspire tomorrow's engineers and increase the number and diversity of young people choosing academic and vocational pathways into engineering. EngineeringUK [online]. Available at: [www.engineeringuk.com](http://www.engineeringuk.com) [accessed 26 July 2024]

**Engineering and Physical Sciences Research Council** (EPSRC) is the main UK government agency for funding research and training in engineering and the physical sciences, investing more than £800 million a year in a broad range of subjects – from mathematics to materials science, and from information technology to structural engineering. EPSRC [online]. Available at: [www.epsrc.ac.uk](http://www.epsrc.ac.uk) [accessed 26 July 2024]

**English Heritage** cares for over four hundred historic buildings, monuments, and sites – from world-famous prehistoric sites to grand medieval castles, from Roman forts on the edges of the empire to a Cold War bunker. English Heritage [online]. Further information is available at: [www.english-heritage.org.uk](http://www.english-heritage.org.uk) [accessed 26 July 2024]. Note: English Heritage has now separated into two organisations. If you are looking for information on listing, planning, grants or heritage research and advice, please visit **Historic England**.

**Estates Gazette** The UK's largest commercial property news team. *Estates Gazette Interactive* [online]. Available at: [www.egi.co.uk](http://www.egi.co.uk) [accessed 26 July 2024] incl. ***Estate Gazette, News from the nationals*** – Round-up of the top property stories with quick links.

**European Real Estate Society** (ERES) was established in 1994 to create an international real estate network between academics and professionals across Europe. ERES [online]. Further information is available at: [www.eres.org](http://www.eres.org) [accessed 26 July 2024].

**ERES Digital Library** [online] and available at: [www.eres.org/index.php/activities/libraryeres](http://www.eres.org/index.php/activities/libraryeres) [accessed 26 July 2024]

**[Back to A to Z]**

## G

**Great Buildings Online** [online]. Available at: [www.architectureweek.com/search.html](http://www.architectureweek.com/search.html) [accessed 26 July 2024] provides a database of buildings around the world and across all historic periods. You can search the database by building names, place, or architect name. It provides access to 3D models, photographic images, and architectural drawings.

**Glenigan** [online]. Available at: [www.glenigan.com](http://www.glenigan.com) [accessed 26 July 2024] provides UK construction project sales leads, market analysis, forecasting, and company intelligence.

**Global Research Gateway**: CBRE's online Insights and Research – a resource for real estate research and reports. CBRE Global Research Gateway [online]. Available at: [www.cbre.com/insights](http://www.cbre.com/insights) [accessed 26 July 2024]

**Global Construction Review** – An online journal from the Chartered Institute of Building (CIOB) [online]. Available at [www.globalconstructionreview.com](http://www.globalconstructionreview.com) [accessed 26 July 2024]

**The Green Construction Board** (GCB) is a consultative forum consisting of key members of UK construction and property industry. GCB [online]. Further information is available at: <https://cic.org.uk/projects/project.php?s=green-construction-board> [accessed 26 July 2024]

**The Guardian, Housing network** – providing insight, advice, and best practice from your community. The Guardian, Housing network [online]. Further information is available at: [www.guardian.co.uk/housing-network](http://www.guardian.co.uk/housing-network) [accessed 26 July 2024]

**The Guardian, Higher Education / Universities** [online]. Further information is available at: [www.guardian.co.uk/higher-education-network](http://www.guardian.co.uk/higher-education-network) [accessed 26 July 2024]

**[Back to A to Z]**

## H

**Health and Safety Executive (HSE)** is the national independent watchdog for work-related health, safety, and illness. HSE are an independent regulator and act in the public interest to reduce work-related death and serious injury across Great Britain's workplaces. HSE [online]. Available at: [www.hse.gov.uk/index.htm](http://www.hse.gov.uk/index.htm) [accessed 26 July 2024]

**HSE, Health & Safety in the construction industry** [online]. Further information is available at: [www.hse.gov.uk/construction](http://www.hse.gov.uk/construction) [accessed 26 July 2024]

**HSE Publications** [online]. Available at: [www.hse.gov.uk/pubns/index.htm](http://www.hse.gov.uk/pubns/index.htm) [accessed 26 July 2024]

**Heritage Alliance** - The largest coalition of heritage interests in England, the Heritage Alliance is the umbrella body for national and major regional Heritage NGOs. Heritage Alliance [online]. Available at: [www.theheritagealliance.org.uk](http://www.theheritagealliance.org.uk) [accessed 26 July 2024]

**Heritage Update: the online edition** of the fortnightly Heritage Alliance's **Heritage Update** e-bulletin [online] and available at: [www.theheritagealliance.org.uk/update](http://www.theheritagealliance.org.uk/update) [accessed 26 July 2024]

**Heritage Help** - Created by the Joint Committee of the National Amenity Societies, Heritage Help offers information and advice on matters related to the management and protection of local historic environments. Heritage Help [online]. Available at: <http://heritagehelp.org.uk> [accessed 26 July 2024]

**Historic England** is the public body that looks after England's historic environment. Historic England champion historic places, helping people understand, value and care for them. Further information is available at: [www.historicengland.org.uk](http://www.historicengland.org.uk) [accessed 26 July 2024]

**Historic Environment Local Management (HELM)** - provides accessible information, training, and guidance to decision makers in local authorities, regional agencies, and national organisations whose actions affect the historic environment. Note: All HELM web content on the Historic England website [online] and available at: <https://historicengland.org.uk/services-skills/training-skills/helmtraining> [accessed 26 July 2024].

**Home Builders Federation (HBF)** represents and serves its members in a range of ways that include Ensuring senior politicians and government officials are aware of housing issues and the challenges faced by our members; and working with Government officials to ensure housing policies are introduced that facilitate housing supply, in a way that is workable for the industry [online]. Available at: [www.hbf.co.uk](http://www.hbf.co.uk) [accessed 26 July 2024]

**House Building Careers** (part of HBF). Here you will be able to learn about the home building industry and how it benefits you, your community, and the country as a whole [online]. Further information available at: <http://housebuildingcareers.org.uk> [accessed 26 July 2024]

**[Back to A to Z]**

**Inclusive Design Hub for the Built Environment** is a collection of the latest guidance and best practice on inclusive design in the built environment and a project of **The Design Council** [online]. Available at: [www.designcouncil.org.uk/projects/inclusive-design-hub-built-environment](http://www.designcouncil.org.uk/projects/inclusive-design-hub-built-environment) [accessed 26 July 2024]

**INFABODE** connects its community of users with industry information from the Real Estate sector on one customisable online platform. Infabode reduces the amount of time people spend trying to access key information from the Real Estate industry. **INFABODE** [online]. Available at: [www.infabode.com](http://www.infabode.com) [accessed 26 July 2024]

**Institution of Civil Engineers** (ICE) is a registered charity that strives to promote and progress civil engineering. ICE [online]. Available at: [www.ice.org.uk](http://www.ice.org.uk) [accessed 26 July 2024]

**ICE Virtual Library** [online]. Available at: [www.icevirtuallibrary.com](http://www.icevirtuallibrary.com) [accessed 26 July 2024] is a free database that indexes all ICE journals.

**International Council for Open and Distance Education** (ICDE) is the leading global membership organisation for enhancing the quality of open, distance, flexible and online education, including e-Learning. ICDE [online]. Available at: [www.icde.org](http://www.icde.org) [accessed 26 July 2024]

**Institute of Historic Building Conservation** (IHBC) is the principal professional body for building conservation practitioners and historic environment specialists working in England, Northern Ireland, Scotland, and Wales, with connections to Ireland. IHBC [online]. Available at: [www.ihbc.org.uk](http://www.ihbc.org.uk) [accessed 26 July 2024]

**Institute of Workplace and Facilities Management** (IWFM) – Formerly the British Institute of Facilities Management, BIFM is now the IWFM. The workplace has been incorporated into their new brand so that the status of the professional can help take careers further, regardless of specialism. IWFM [online]. Further information is available at: [www.iwfm.org.uk](http://www.iwfm.org.uk) [accessed 26 July 2024]

**IWFM Insight** – discover leading research and resources for the workplace and facilities management profession. IWFM Insight [online]. Available at: [www.iwfm.org.uk/insight](http://www.iwfm.org.uk/insight) [accessed 26 July 2024]

**IWFM News** – discover the latest news affecting the profession and gain expert insight and advice. IWFM News [online] Available at: [www.iwfm.org.uk/news](http://www.iwfm.org.uk/news) [accessed 26 July 2024]

**IWFM Digital Magazine, *facilitate*** - Informing workplace and facilities management professionals. IWFM *facilitate* [online]. Available at: [www.facilitatemagazine.com/](http://www.facilitatemagazine.com/) [accessed 26 July 2024]

**ITcon** – The **Journal of Information Technology in Construction** is a peer-reviewed scholarly journal on the use of IT in architecture, civil engineering, and facility management. *ITcon* [online]. Available at: [www.itcon.org](http://www.itcon.org) [accessed 26 July 2024]

**[Back to A to Z]**

## J

**JISC Library Hub Discover** – Library Hub Discover replaces COPAC\* and SUNCAT, offering increased coverage of university libraries along with new facilities and improved response times. Library Hub Discover currently contains 50,642,372 records created from 142,932,638 records

contributed by 192 institutions. Jisc Library Hub Discover [online]. Available at: <https://discover.libraryhub.jisc.ac.uk> [accessed 26 July 2024].

**JORUM Archive** – After 13 years delivering and sharing content across the higher education, further education and skills sectors the Jorum service and website was retired on 30 September 2016. However, many of the open education resources (OER) that were available in Jorum, access to their Jorum Archive can be accessed via the JISC website [online]. Available at: [www.jisc.ac.uk/website/legacy/jorum](http://www.jisc.ac.uk/website/legacy/jorum) [accessed 26 July 2024] where you can also gain access to JISC's full digital resources offer.

**Journal of Online Learning and Teaching (JOLT)** - The **MERLOT Journal of Online Learning and Teaching** is a peer-reviewed, open-access, online publication that aims to promote scholarship in the use of the Internet and web-based multimedia resource in higher education.

**JournalTOCs** is the largest, free collection of scholarly Journal Title of Contents (TOCs) [online]. Available at: [www.journaltoCs.ac.uk/index.php](http://www.journaltoCs.ac.uk/index.php) [accessed 26 July 2024]

**JSTOR Open Content** - a digital library for scholars, researchers and students, JSTOR provides access to academic journal articles, books, and primary sources in seventy-five disciplines. Note: UCL Press publishes peer-reviewed scholarly monographs, edited collections, textbooks and journals. All of its books are available on: (a) **UCL Press**, and (b) **JSTOR** websites

**[Back to A to Z]**

## K

**[Back to A to Z]**

## L

**Leeds Beckett University's – School of the Built Environment, Engineering and Computing** [online]. Further information that includes Subject Area Research – 1) Civil Engineering and Building Services Engineering, 2) Planning, Housing and Human Geography, and 3) Surveying, Construction and Project Management is available at: [www.leedsbeckett.ac.uk/school-of-built-environment-engineering-and-computing](http://www.leedsbeckett.ac.uk/school-of-built-environment-engineering-and-computing) [accessed 26 July 2024]

**Leeds Beckett University's - Sustainability** [online]. Further Information is available at: [www.leedsbeckett.ac.uk/leeds-sustainability-institute](http://www.leedsbeckett.ac.uk/leeds-sustainability-institute) [accessed 26 July 2024]

**Leeds Beckett University – The Library** [online]. Available at: <http://libguides.leedsbeckett.ac.uk/home> [accessed 26 July 2024]

**Lexology** is a comprehensive source of international legal updates, analysis, and insights. Lexology publish more than 450 articles every day from over 1,100 law firms and service providers worldwide across fifty work areas in twenty-five languages. Lexology [online]. Available at: [www.lexology.com](http://www.lexology.com) [accessed 26 July 2024]

**Local Government Association** (LGA) is the national voice of local government. They work with councils to support, promote, and improve local government. LGA [online]. Available at: [www.local.gov.uk](http://www.local.gov.uk) [accessed 26 July 2024]

**LGA Building Safety Knowledge Hub** - The Local Government Association and the National Housing Federation are co-hosting an online social housing building owner network across England, to provide information, and develop and share good practice, on building safety. LGA [online]. Available at: [www.local.gov.uk/topics/community-safety/building-safety-knowledge-hub](http://www.local.gov.uk/topics/community-safety/building-safety-knowledge-hub) [accessed 26 July 2024]

**[Back to A to Z]**

## M

**Multimedia Educational Resource for Learning and Online Teaching** (MERLOT). The MERLOT project began in 1997, when the California State University Center for Distributed Learning (CSU-CDL) developed and provided free access to MERLOT [online]. Available at: [www.merlot.org/merlot](http://www.merlot.org/merlot) [accessed 26 July 2024]. MERLOT is a curated collection of free and open online teaching, learning, and faculty development services contributed and used by an international education community.

[\[Back to A to Z\]](#)

## N

**Naomi Korn Associates – Copyright Resources** has developed free and openly licensed copyright, licensing and data protection help resources. Naomi Korn Associates [online]. Available at: <https://naomikorn.com> [accessed 26 July 2024]

**National Building Information Modelling (BIM) Library**, the construction industry's free-to-use resource of the NBS (trading name of RIBA Enterprises Ltd) standard BIM content [online]. Available at: [www.thenbs.com/our-tools/nbs-national-bim-library](http://www.thenbs.com/our-tools/nbs-national-bim-library) [accessed 26 July 2024]

**National Building Specification** (NBS) is an integrated global platform for everyone involved in the design, supply, and construction of the built environment. NBS [online]. Available at: [www.thenbs.com](http://www.thenbs.com) [accessed 26 July 2024]

**NBS Knowledge** [online] is available at: [www.thenbs.com/knowledge](http://www.thenbs.com/knowledge) [accessed 26 July 2024]

**NBS Publication Index** [online] - this index provides information about key industry documents which are or have been available in The Construction Information Service (CIS), or cited in NBS Guidance. Further information is available at: [www.thenbs.com/Publicationindex](http://www.thenbs.com/Publicationindex) [accessed 26 July 2024]

**NBS Digital Construction Conversations podcasts** – New to 2021, NBS are talking to inspirational industry leaders about the trends and technologies impacting the construction industry – from sustainability to regulations to change management. NBS Digital Construction Conversations [online]. Available at: [www.thenbs.com/podcast](http://www.thenbs.com/podcast) [accessed 26 July 2024]

**National Skills Academy for Construction** (NSAFC) is an industry-led framework supporting clients and contractors to identify, develop and realise employment and skills solutions across construction projects. CITB, NSAFC [online]. Available at: [www.citb.co.uk/national-skills-academy-for-construction](http://www.citb.co.uk/national-skills-academy-for-construction) [accessed 26 July 2024]. Note: It is facilitated by the Construction Industry Training Board (CITB).

**The National Trust** protect historic houses, gardens, mills, coastline, forests, woods, fens, beaches, farmland, moorland, islands, archaeological remains, nature reserves, villages, and pubs. The National Trust [online]. Available at: [www.nationaltrust.org.uk](http://www.nationaltrust.org.uk) [accessed 26 July 2024]

**National Trust's Nature & Climate** [online]. Available at: [www.nationaltrust.org.uk/our-cause/nature-climate](http://www.nationaltrust.org.uk/our-cause/nature-climate) [accessed 26 July 2024]

**New Civil Engineer** (NCE) a weekly magazine published for the Institution of Civil Engineers (ICE). NCE [online]. Available at: [www.nce.co.uk](http://www.nce.co.uk) [accessed 26 July 2024]



**We Are Nima – nima** – nima’s ultimate vision is a thriving and sustainable built and natural environment transformed by exploiting purpose- driven data. nima [online]. Available at: <https://wearenima.im/> [accessed 26 July 2024]

**[Back to A to Z]**

## O

**Online Learning Consortium** (OLC) is devoted to advanced quality online learning by providing professional development, instruction, best practice publications and guidance to educators, online learning professionals and organisations around the world. Online Learning Consortium [online] and further information is available at: <http://onlinelearningconsortium.org/> [accessed 26 July 2024]

**OLC’s Online Learning** – the official journal of the Online Learning Consortium. *Online Learning* [online]. Available at: <http://onlinelearningconsortium.org/read/> [accessed 26 July 2024]

**Open Education Resources, Research Hub** – OER Hub gathers research on the impact of open education resources (OER) on learning and teaching practices. OER Hub [online]. Further information is available at: <http://oerhub.net/> <http://oerresearchhub.org/> [accessed 26 July 2024]

**Open Praxis** – published by the International Council for Open and Distance Education – ICDE, *Open Praxis* is a peer-reviewed open access scholarly journal focusing on research and innovation in open, distance and flexible education. *Open Praxis* [online]. Available at: <https://openpraxis.org/> [accessed 26 July 2024]

**Open University (OU) UK** [online] and available at: [www.open.ac.uk](http://www.open.ac.uk) [accessed 26 June 2024]

**Open University (OU) UK, Institute of Education Technology** [online] and available at: [www.open.ac.uk/iet/main](http://www.open.ac.uk/iet/main) [accessed 26 July 2024]

**Organisation for Economic Cooperation and Development (OECD) iLibrary** is the online library of the OECD, featuring its books, papers and statistics and is the gateway to OECD’s analysis and data. Note: It replaced SourceOECD. OECD iLibrary [online]. Available at: [www.oecd-ilibrary.org](http://www.oecd-ilibrary.org) [accessed 26 July 2024]

**[Back to A to Z]**

## P

**Parliament.uk, Research briefings** produced by the House of Commons Library, the House of Lords Library and the Parliamentary Office of Science and Technology (POST). Parliament, Parliamentary business, Publications and records, Research briefings. Parliament.UK [online]. Further information is available at: <http://researchbriefings.parliament.uk> [accessed 26 July 2024]

**Planning, BIM & Construction Today** – The PBC Today website has compelling and informative features, news and products for a diverse audience serving a wide construction sector. PBC Today [online]. Available at: [www.pbctoday.co.uk/news](http://www.pbctoday.co.uk/news) [accessed 26 July 2024]

**Planning Advisory Service** (PAS) provide consultancy and peer support, training sessions and online resources to help local authorities understand and respond to planning reform. PAS [online]. Available at: [www.local.gov.uk/pas](http://www.local.gov.uk/pas) [accessed 26 July 2024].

**Planning Officers Society** (POS) is the voice for public sector planning practitioners, pursuing good and effective planning practice within local government [online]. Available at: [www.planningofficers.org.uk](http://www.planningofficers.org.uk) [accessed 26 July 2024]

**The Planning Portal** is the UK Government’s online planning and building regulations resource for England and Wales [online]. Available at: [www.planningportal.co.uk](http://www.planningportal.co.uk) [accessed 26 July 2024]

**The Prince's Foundation** was created by the merging of The Prince's Foundation for Building Community, The Prince's Regeneration Trust, The Great Steward of Scotland's Dumfries House Trust and The Prince's School of Traditional Arts in 2018. This combined force enables the charity to achieve HRH's goal of creating harmonious communities, through three core tiers. The Prince's Foundation [online]. Available at: <https://princes-foundation.org> [accessed 26 July 2024]

**Property People's Network** (PPN) is open to all interested in land and property and provides a forum to network through a range of social activities and visits [online]. Available at: [www.ucem.ac.uk/product/corporate-ppn-membership/](http://www.ucem.ac.uk/product/corporate-ppn-membership/) [accessed 26 July 2024]

**Property Week** – Commercial property news. *Property Week* [online]. Available at: [www.propertyweek.com](http://www.propertyweek.com) [accessed 26 July 2024]

**[Back to A to Z]**

## R

**Regeneration and Renewal – Placemaking Resource incorporating Regeneration & Renewal magazine** [online]. Available at: [www.placemakingresource.com](http://www.placemakingresource.com) [accessed 26 July 2024]

**Registry of Open Access Repositories** - ROAR is hosted at the University of Southampton, UK and is made possible by funding from the JISC. ROAR is part of the EPrints.org network and promotes the development of open access by providing timely information about the growth and status of repositories throughout the world. ROAR [online]. Available at: <http://roar.eprints.org/> [accessed 26 July 2024]

**Residential Landlord** – an online resource providing Landlord Resources, a Document Download Centre (containing templates and free tenancy agreements to amend and use as required), news and views, advice, and guidance [online]. Further information is available at: <https://residentiallandlord.co.uk/> [accessed 26 July 2024]

**The Royal Institute of British Architects** (RIBA) is a global professional membership body driving excellence in architecture [online]. Further information is available at: [www.architecture.com](http://www.architecture.com) [accessed 26 July 2024]

**RIBA Library** – Visit the RIBA Library [online]. Available at: [www.architecture.com/contact-and-visit/riba-library](http://www.architecture.com/contact-and-visit/riba-library) [accessed 26 July 2024]

**RIBA Home > Knowledge and resources > Resources > RIBA Plan of Work** [online]. Further information is available at: [www.architecture.com/knowledge-and-resources/resources-landing-page/riba-plan-of-work](http://www.architecture.com/knowledge-and-resources/resources-landing-page/riba-plan-of-work) [accessed 26 July 2024]

**Royal Institution of Chartered Surveyors** (RICS) is an independent body committed to setting and upholding the highest standards of excellence and integrity in land, property, and construction. RICS [online]. Available at: [www.rics.org](http://www.rics.org) [accessed 26 July 2024]

**RICS > News & Insights** [online]. Available at: [www.rics.org/news-insights](http://www.rics.org/news-insights) [accessed 26 July 2024]

**RICS > Upholding Professional Standards** [online]. Available at: <https://www.rics.org/profession-standards> [accessed 26 July 2024]

**RICS Publications (Modus and journals)** - RICS publishes a range of journals that are free to view online. Available at: [www.rics.org/news-insights/modus-and-journals](http://www.rics.org/news-insights/modus-and-journals) [accessed 26 July 2024]

**RICS Knowledge and Information Services** – The aim is to combine the best of RICS's traditional library service (**RICS library catalogue**) and space with an enquiry and resource

service, RICS Knowledge and Information Service [online]. Available at: [www.rics.org/profession-standards/knowledge-and-information-services](http://www.rics.org/profession-standards/knowledge-and-information-services) [accessed 26 July 2024]

**Royal Town and Planning Institute** (RTPI) is the UK's leading planning body for spatial, sustainable, and inclusive planning and is the largest planning institute in Europe with over 23,000 members. In 2014 they celebrate their Centenary. RTPI [online]. Available at: [www.rtpi.org.uk](http://www.rtpi.org.uk) [accessed 26 July 2024]

[\[Back to A to Z\]](#)

## S

**Savills Research** – Savills Research, Insight & Opinion provides advice and analysis to clients across the UK, with specialists in commercial, residential, and rural property research [online] and available at: [www.savills.co.uk/insight-and-opinion/research.aspx](http://www.savills.co.uk/insight-and-opinion/research.aspx) [accessed 26 July 2024]

**Shoosmiths Insights & articles** – Shoosmiths is a major UK law firm with a network of offices working together as one team. Read the latest insights, articles, and commentary from Shoosmiths or explore their content library that include – Placemaking; Real estate; Diversity & Inclusion; Litigation & disputes; Governance; Employment, and more. Shoosmiths [online]. Available at: [www.shoosmiths.co.uk/insights](http://www.shoosmiths.co.uk/insights) [accessed 26 July 2024]

**Specification Online** – the free to use news and online products resource for specifiers working across the architectural and building sector [online] and available at: <http://specificationonline.co.uk> [accessed 26 July 2024]

**Supply Chain Sustainability School** represents a common approach to developing sustainability competence in the supply chain. It is a free resource available to any supplier and is part of their continued commitment to lead the industry into a brighter, more sustainable future. Supply Chain Sustainability School [online]. Further information is available at: [www.supplychainschool.co.uk/uk/default-home-main.aspx](http://www.supplychainschool.co.uk/uk/default-home-main.aspx) [accessed 26 July 2024]

[\[Back to A to Z\]](#)

## T

**The Telegraph – Property and construction industry** - The latest news, analysis and share prices on Britain's biggest construction and property companies. The Telegraph, Property and Construction Industry [online]. Available at: [www.telegraph.co.uk/property-and-construction-industry](http://www.telegraph.co.uk/property-and-construction-industry) [accessed 26 July 2024]

**Tomorrow's Engineers** brings together resources and evidence to support the engineering community in getting the most out of their engagement activity. Tomorrow's Engineer [online]. Available at: [www.tomorrowsengineers.org.uk](http://www.tomorrowsengineers.org.uk) [accessed 26 July 2024]

**Trust in Digital Repositories** (TrustDR) – a research project that examined how to effectively manage the legal aspects of digital collections of learning resources and produced a policy development toolkit. TrustDR [online]. Available at: <https://trustdr.digitalinsite.co.uk> [accessed 26 July 2024]

[\[Back to A to Z\]](#)

## U

**University College London (UCL) Press** – UCL Press publishes peer-reviewed scholarly monographs, edited collections, textbooks and journals. All its books are available on: (a) UCL Press, and (b) JSTOR (see above).

**UK BIM Alliance** - here to help the built environment sector to take the first fundamental step in your journey to digital transformation. UK BIM Alliance [online]. Available at: <https://ukbimalliance.co.uk/> [accessed 26 July 2024]

**UK BIM Framework** – The overarching approach to implementing BIM in the UK. Further information on BIM Standards, Guides and Resources. UK BIM Framework [online]. Available at: [www.ukbimframework.org](http://www.ukbimframework.org) [accessed 26 July 2024]

**University College of Estate Management (UCEM)** is the leading provider of supported distance learning for real estate and construction professionals. UCEM [online]. Available at: [www.ucem.ac.uk](http://www.ucem.ac.uk) [accessed 26 July 2024]

**UCEM e-Library** is a comprehensive and valuable online resource, supplementing teaching and learning materials and enabling students to access a wealth of subject-specific and credible information to support them throughout their studies. UCEM e-Library [online]. Available at: [www.ucem.ac.uk/e-library](http://www.ucem.ac.uk/e-library) [accessed 26 July 2024]

**UCEM Research repository** – a digital online archive which will allow free access to UCEM-produced outputs, including but not limited to research publications, podcasts etc. UCEM Research repository [online]. Available at: <https://ucem.repository.guildhe.ac.uk/> [accessed 26 July 2024]

**University of the West of England (UWE), Centre for Architecture and Built Environment Research** (CABER) seeks to develop innovative approaches, procedures, technologies, and techniques that support the design, management, reconfiguration, maintenance and operation of buildings, their fabric, and the environments they create. Note: CABER incorporates the previous Centre for Construction and Property Research (CPRC). CABER [online]. Available at: [www1.uwe.ac.uk/et/research/caber.aspx](http://www1.uwe.ac.uk/et/research/caber.aspx) [accessed 26 July 2024]

**UWE Educational Resources for the Built Environment (ERBE)** produces unique and highly respected educational resources for academic and professional use and incorporates the **Video Project** and the **Construction Website**. Further information can be found on the ERBE website [online] and available at: [www.uwe.ac.uk/about/colleges-and-schools/arts-technology-and-environment/architecture-and-built-environment/erbe](http://www.uwe.ac.uk/about/colleges-and-schools/arts-technology-and-environment/architecture-and-built-environment/erbe) [accessed 26 July 2024]

- **UWE Construction and conservation films**
- **UWE Construction website**

**UWE, Library, Search for things: A-Z** [online]. Available at: [www1.uwe.ac.uk/library/searchforthingsa-z.aspx](http://www1.uwe.ac.uk/library/searchforthingsa-z.aspx) [accessed 26 July 2024]

**UWE, Research publications and reports** – Providing immediate world-wide open access to all UWE's research output. Research at UWE Bristol [online]. Available at: [www1.uwe.ac.uk/research.aspx](http://www1.uwe.ac.uk/research.aspx) [accessed 26 July 2024]

## V

**Virtual Training Suite** - The Virtual Training Suite is a national eLearning service for Higher and Further Education in the UK, offering FREE "teach yourself" tutorials delivered over the Web, for

students, lecturers and researchers who want to learn what the Internet can offer in their subject. This is a public service from [JISC](#).

[\[Back to A to Z\]](#)

## Y

[Yale Environment 360](#) - an online magazine offering opinion, analysis, reporting, and debate on global environmental issues. We feature original articles by scientists, journalists, environmentalists, academics, policy makers, and business people, as well as multimedia content and a daily digest of major environmental news. *Yale Environment 360* [online]. Available at: <https://e360.yale.edu/> [accessed 26 July 2024]

## Z

[Zotero](#) – Your personal research assistant. Zotero is a free, easy-to-use tool to help you organise, annotate, cite, and share research. Zotero [online]. Available at: [www.zotero.org/](http://www.zotero.org/) [accessed 26 July 2024]

(Note: The web links provided were correct at the time of compilation.)

**UCEM e-Library** - The UCEM e-Library has a searchable database ([e-Library > section 9](#)) containing circa 1,000 [Useful web-links to e-Resources](#) for all subject areas covered within our programme of studies, pertaining to the built environment profession and the education sector.

### Disclaimer:

*Knowledge Foundations* (formerly the library e-bulletin) is intended to highlight news items and provide basic background information only. UCEM cannot accept responsibility for the content of external websites. Please view and refer to UCEM's [Terms of Use](#).

**Please note:** support for Internet Explorer is being removed by Microsoft and a number of platforms will no longer work on it, therefore you may need to use a PC with Google [Chrome](#), Mozilla [Firefox](#), Microsoft [Edge](#), or other browsers.

**University College of Estate Management** (UCEM), Horizons, 60 Queen's Road, RG1 4BS, UK – UK (Free): 0800 019 9697, International: +44 (0)118 921 4696, Email: [library@ucem.ac.uk](mailto:library@ucem.ac.uk)

**UCEM Social media:** [Facebook](#), [Twitter](#), [LinkedIn](#), [YouTube](#)

© Roper L (2024) *Knowledge Foundations* [online] Reading: UCEM. Available at: UCEM Website > Supported Online Learning > [e-Library](#)



This work is licensed under a [Creative Commons Attribution-ShareAlike 4.0 International License](#).